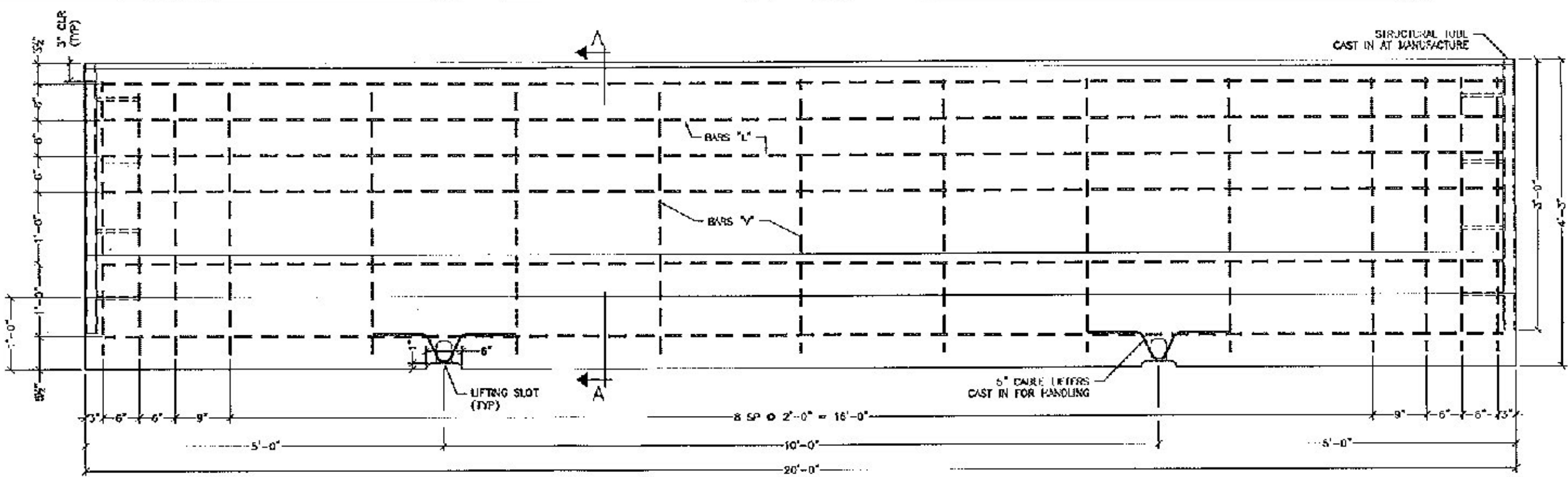
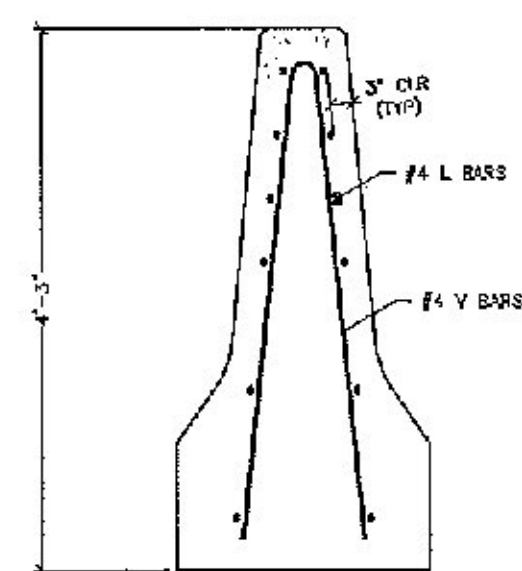


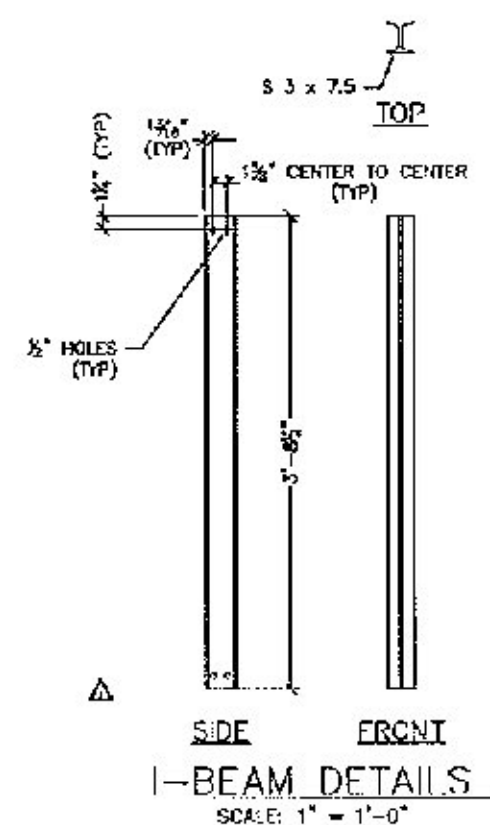
BARRIER END VIEW



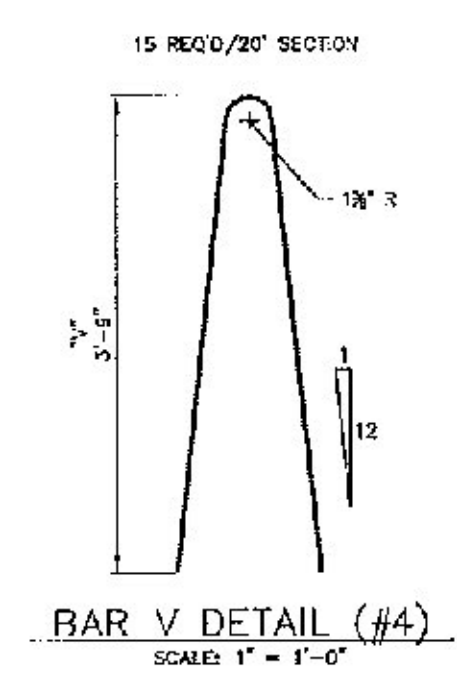
ELEVATION  
SCALE: 1" = 1'-0"



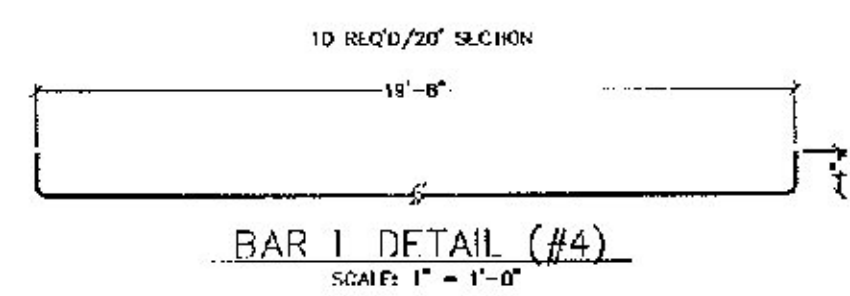
REINFORCING END VIEW



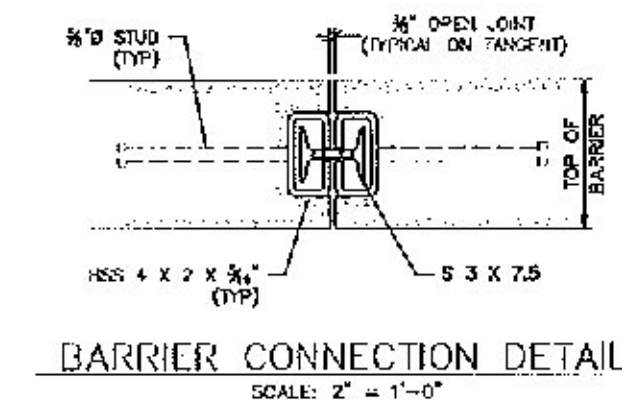
I-BEAM DETAILS  
SCALE: 1" = 1'-0"



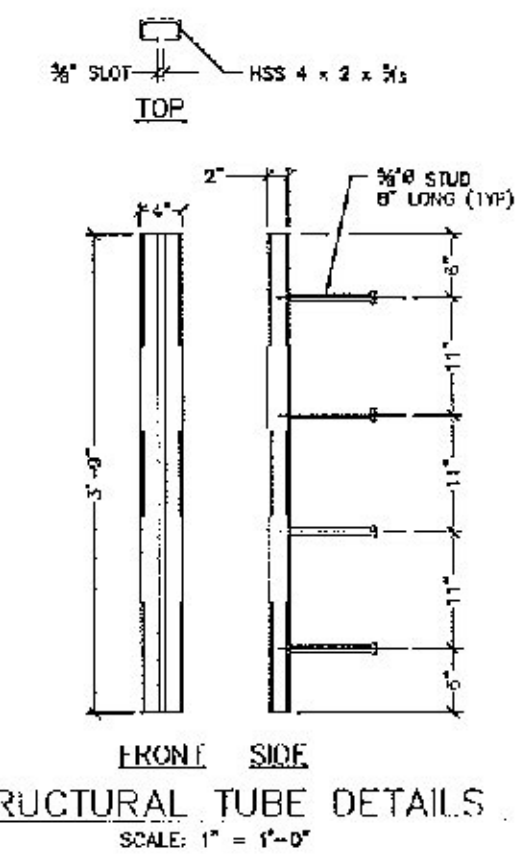
BAR V DETAIL (#4)  
SCALE: 1" = 1'-0"



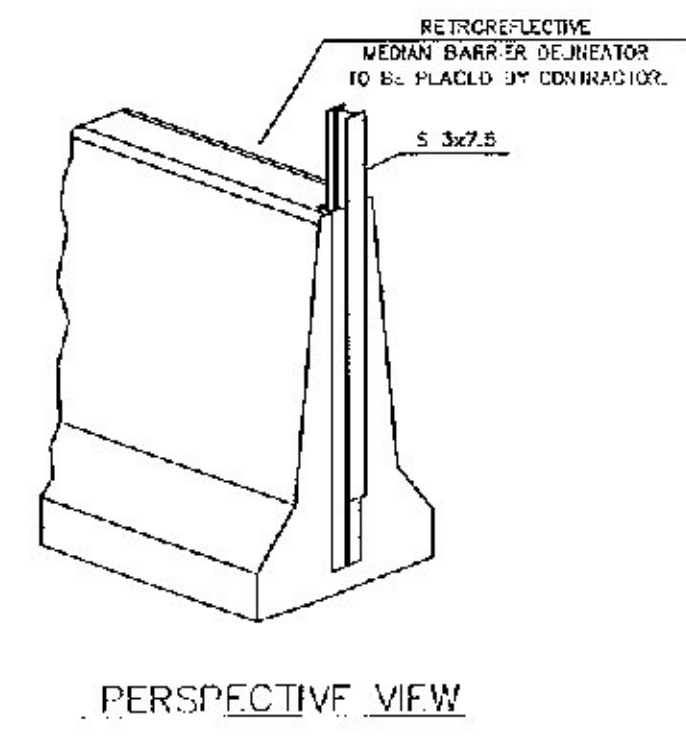
BAR I DETAIL (#4)  
SCALE: 1" = 1'-0"



BARRIER CONNECTION DETAIL  
SCALE: 2" = 1'-0"



STRUCTURAL TUBE DETAILS  
SCALE: 1" = 1'-0"



PERSPECTIVE VIEW

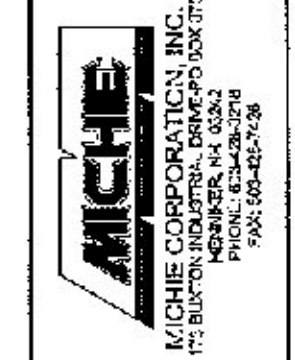
GENERAL NOTES

1. THE CONCRETE BARRIER DETAILS, AS SHOWN ON THIS SHEET, ARE IN COMPLIANCE WITH THE REQUIREMENTS OF NCHRP REPORT 350, TL 4.
2. I-BEAMS AND STRUCTURAL TUBES SHALL BE GALVANIZED AFTER FABRICATION.
3. STUD WELDING SHALL BE IN ACCORDANCE WITH ITEM 547.
4. SLOT IN STRUCTURAL TUBE SHALL BE CUT WITH MECHANICALLY GUIDED MEANS TO A SMOOTH, UNIFORM SURFACE, SELECTING A SURFACE FINISHNESS OF 1000 MICRONS OR BETTER (ANSI B46.1).

MATERIAL NOTES

1. THE BARRIERS SHALL BE LIGHT COLORED CLASS "A" CONCRETE HAVING A MINIMUM 28 DAY COMPRESSION STRENGTH OF 4,000 PSI. BARRIERS SHALL HAVE A SMOOTH UNIFORM SURFACE FREE OF DEFECTS AND IRREGULARITIES. CASTING DATE SHALL BE SHOWN ON BARRIER. ALL EXPOSED EDGES OF CONCRETE SHALL BE CHAMFERED UNLESS NOTED OTHERWISE.
2. ALL REINFORCING STEEL SHALL BE AASHTO M31 (ASTM-A615) GRADE 60, EPOXY COATED, REINFORCEMENT SHALL BE HELIX MINIMUM R100-11.4.
3. EACH BARRIER UNIT SHALL INCLUDE ONE S 3x7.5 CONFORMING TO AASHTO M 270H/M 270 GRADE 25 AS SHOWN ON THIS PLAN SHEET.
4. STRUCTURAL TUBES SHALL MEET THE REQUIREMENTS OF ASTM A500 GRADE B.
5. EXPOSED BARRIERS SHALL BE COATED BY OTHERS WITH ITEM 514.10 WATER REPLENT SHANT.

NO.	DATE	REVISION



Roadway Improvements  
Bridge Rehabilitation - Bennington, VT  
F Shaped Barrier  
Shop Drawings

Prepared for:  
J. A. McDonald, Inc.  
PO Box 132  
Lyndon Center, VT 05850

DWG NO. 05850-01