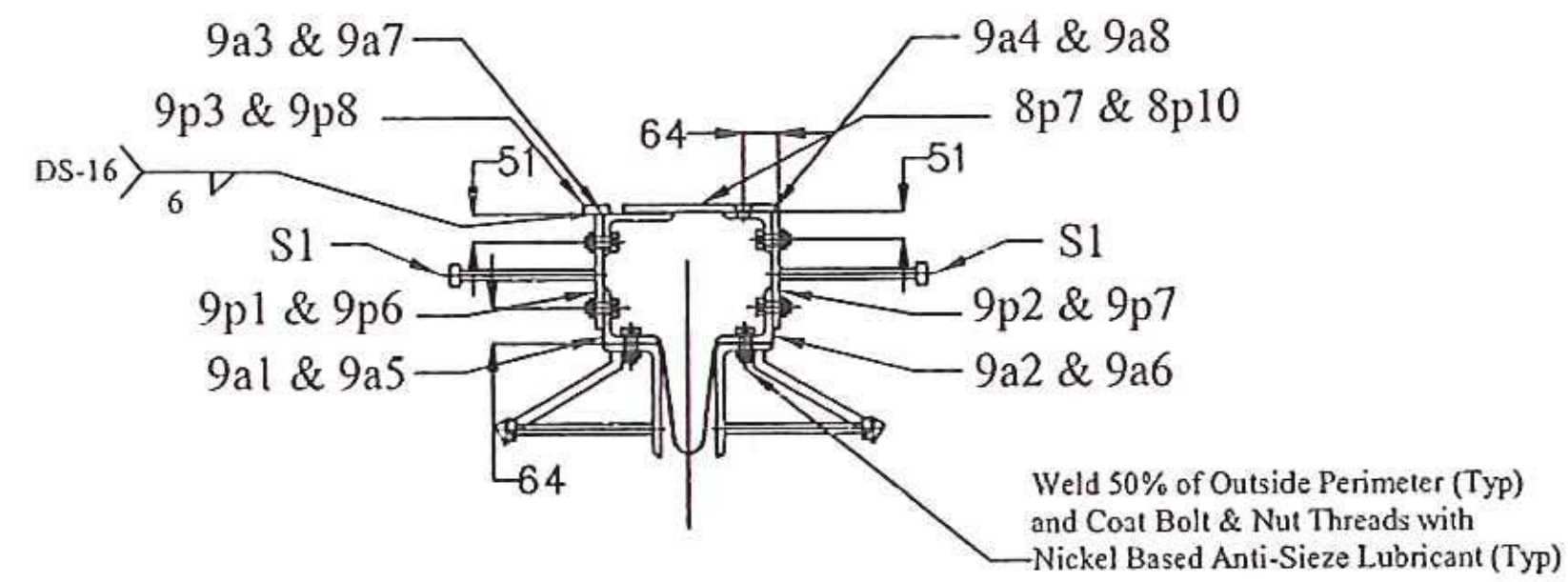
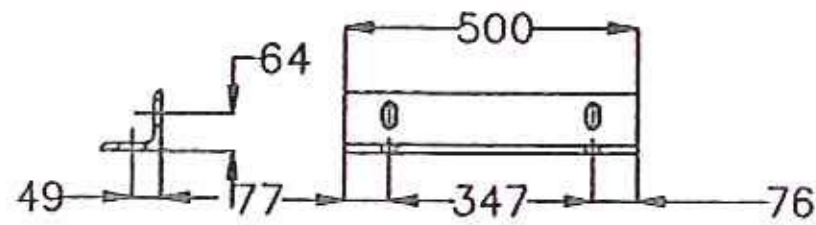


(1) - 9C1 CURB PLATES  
(1) - 9C2 CURB PLATES  
ABUTMENT 2

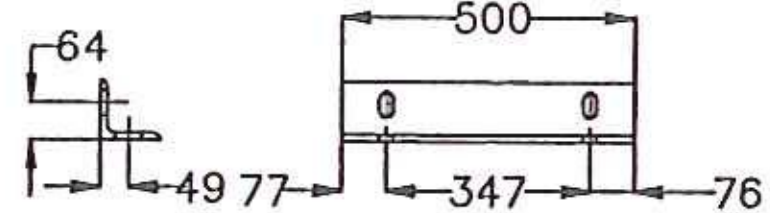


SECTION A-A

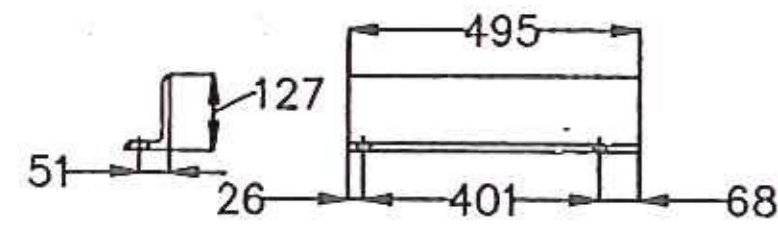
BILL OF MATERIALS				
QTY	MARK	SHAPE	LENGTH	REMARKS
1	9C1	CURB PLATES (Low Side)		
1	9a1	L 102 x 102 x 13	500	
1	9a2	L 102 x 102 x 13	500	
1	9a3	L 127 x 76 x 13	495	
1	9a4	L 102 x 76 x 13	485	
1	9p1	Plate 13 x 277	550	
1	9p2	Plate 13 x 281	550	
1	9p3	Plate 16 x 50	563	
1	9p4	Plate 13 x 225	117	
1	9p5	Plate 13 x 308	117	
4	S1	Studs 19 x 180		
12		Hex Head Bolt 19 x 51 Lg with Washer and Nut		
1	9C2	CURB PLATES (High Side)		
1	9a5	L 102 x 102 x 13	500	
1	9a6	L 102 x 102 x 13	500	
1	9a7	L 127 x 76 x 13	499	
1	9a8	L 102 x 76 x 13	495	
1	9p6	Plate 13 x 234	550	
1	9p7	Plate 13 x 235	551	
1	9p8	Plate 16 x 50	563	
1	9p9	Plate 13 x 211	308	
1	9p10	Plate 13 x 211	117	
4	S1	Studs 19 x 180		
12		Hex Head Bolt 19 x 51 Lg with Washer and Nut		



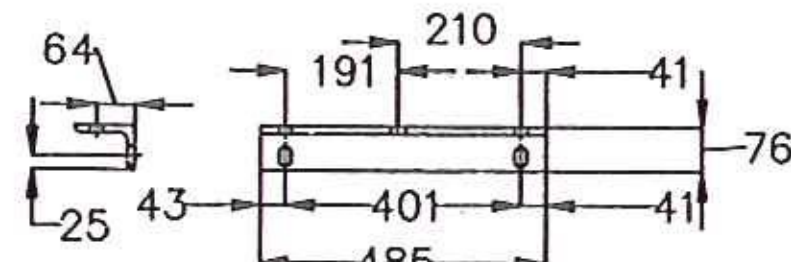
1 - 9a1 DETAIL



1 - 9a2 DETAIL

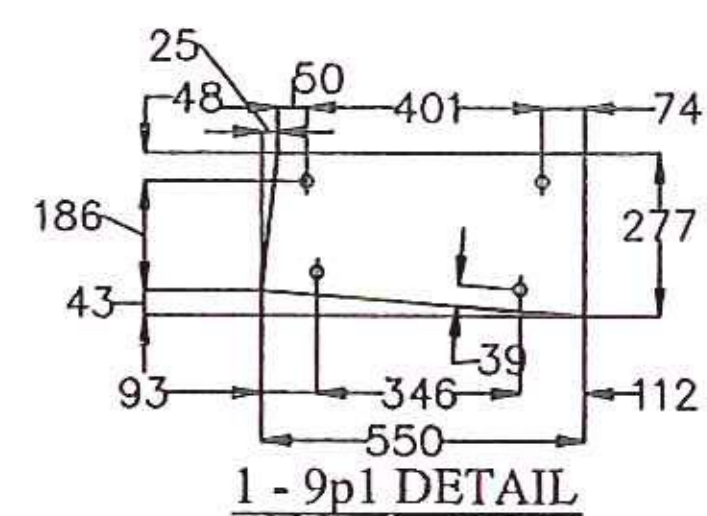


1 - 9a3 DETAIL

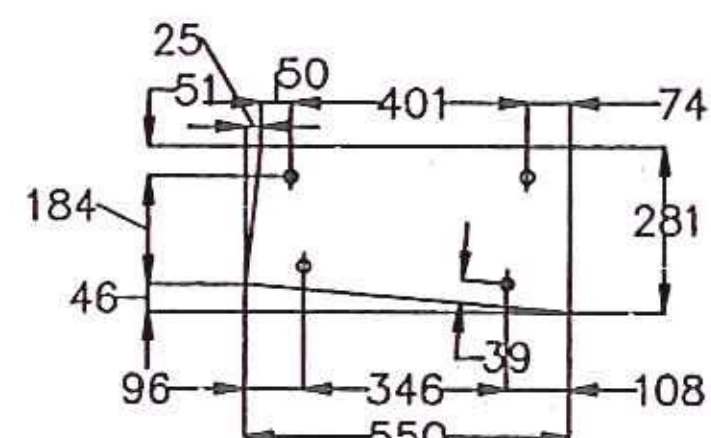


1 - 9a4 DETAIL

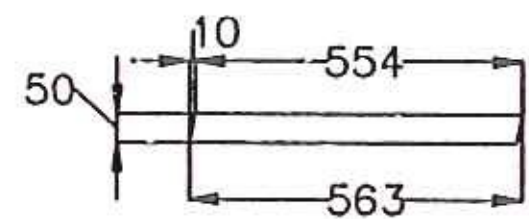
Long slots are 22 x 44 in 7a1 & 7a2  
Short slots are 22 x 33 in 7a3 & 7a4  
Holes 22 mm in 7a4



1 - 9p1 DETAIL

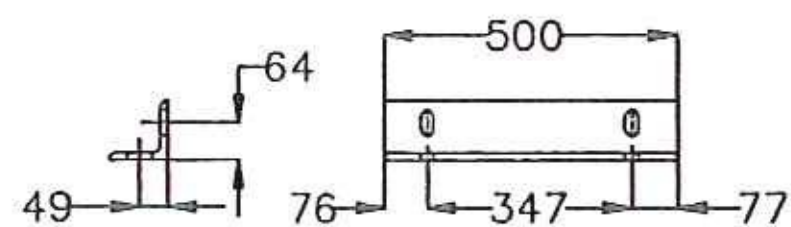


1 - 9p2 DETAIL

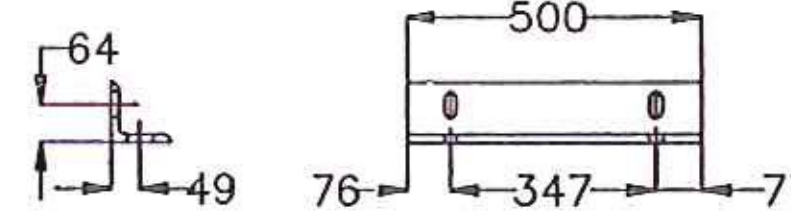


1 - 9p3 DETAIL

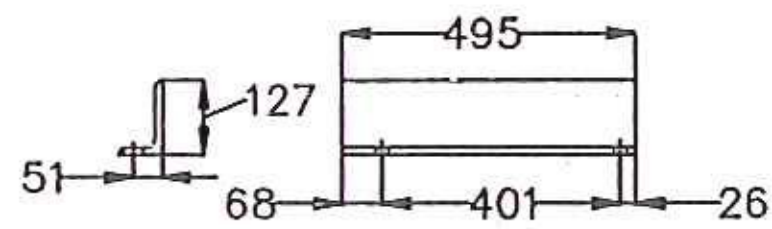
All holes 22 mm dia in plates



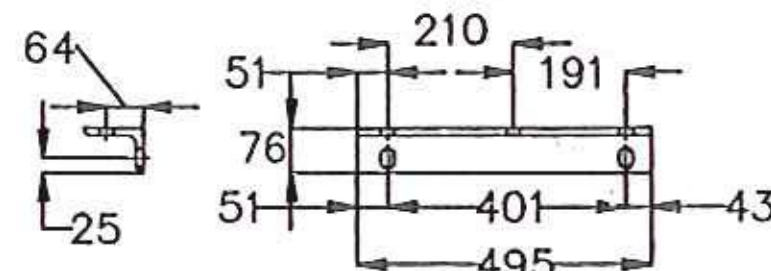
1 - 9a5 DETAIL



1 - 9a6 DETAIL

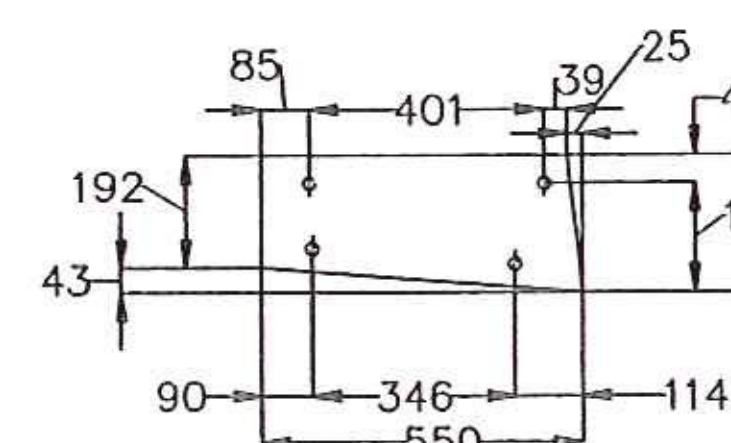


1 - 9a7 DETAIL

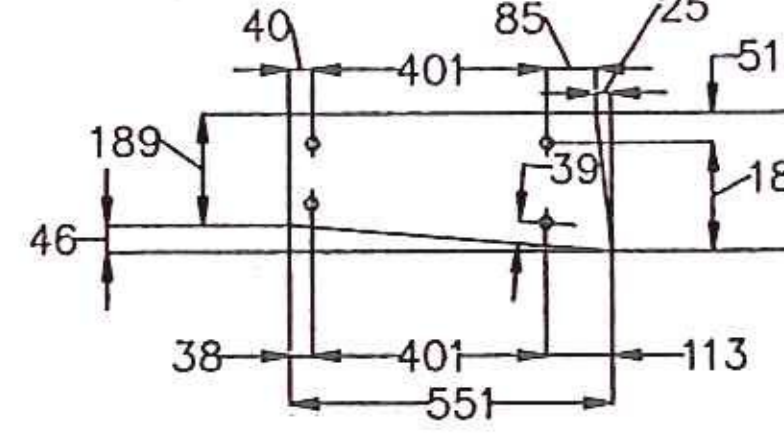


1 - 9a8 DETAIL

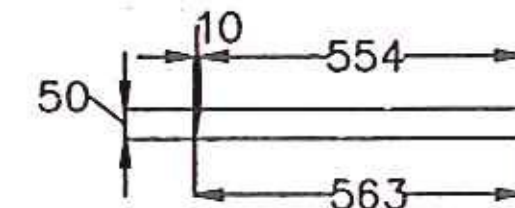
Long slots are 22 x 44 in 7a1 & 7a2  
Short slots are 22 x 33 in 7a3 & 7a4  
Holes 22 mm in 7a4



1 - 9p6 DETAIL



1 - 9p7 DETAIL



1 - 9p8 DETAIL

All holes 22 mm dia in plates

ALL DRAWINGS ARE REVIEWED UNLESS NOTED OTHERWISE

EXEMPTION TAKEN	<input checked="" type="checkbox"/>
REVISE AS NOTED	<input type="checkbox"/>
RESUBMISSION NOT REQUIRED	<input type="checkbox"/>
REVISE AS NOTED	<input type="checkbox"/>
RESUBMISSION REQUIRED	<input type="checkbox"/>
REJECTED	<input type="checkbox"/>

DATE: 7/21/10

SIGNATURE: Michael Clavette

REVIEW BY STANTEC IS FOR THE SOLE PURPOSE OF ASCERTAINING GENERAL CONFORMITY WITH DESIGN. CONTRACTOR IS RESPONSIBLE FOR DIMENSIONS, FABRICATION AND CONSTRUCTION METHODS, COORDINATION OF SUB-TRADES, DETAIL DESIGN OF COMPONENTS, AND ERRORS OR OMISSIONS ON SHOP DRAWINGS.

METRIC

DRAWING COVERS	
CURB PLATES ABUTMENT 2 - BRIDGE 14A	
PROJECT	BENNINGTON
LOCATION	RAMP G/S OVER VT ROUTE 279 WB
ENGINEER	STATE OF VERMONT AOT / STANTEC
CUSTOMER	MILLER CONSTRUCTION

REV NO.	DATE	DESCRIPTION
1	7-14-2010	REVISED PER APPROVAL COMMENTS
0	6-21-2010	SUBMITTED FOR APPROVAL

HOLES AS NOTED

MATERIAL: AASHTO M 270M/N270 GRADE 250 GALV

**MERRIMACK SHEET METAL**

119 HALL STREET  
CONCORD NH 03301

Tel. 603.224.7766  
Fax 603.224.7925

DRAWN BY: RL  
CHECKED BY: JD  
JOB NO: #3374  
DWG: F9