

SECTION A-A

BILL OF MATERIALS				
QTY	MARK	SHAPE	LENGTH	REMARKS
1	7C1	CURB PLATES (Low Side)		
1	7a1	L 102 x 102 x 13	511	
1	7a2	L 102 x 102 x 13	511	
1	7a3	L 127 x 76 x 13	491	
1	7a4	L 102 x 76 x 13	490	
1	7p1	Plate 13 x 280	565	
1	7p2	Plate 13 x 283	565	
1	7p3	Plate 16 x 50	605	
1	7p4	Plate 13 x 225	122	
1	7p5	Plate 13 x 308	122	
4	S1	Studs 19 x 180		
12		Hex Head Bolt 19 x 51 Lg with Washer and Nut		
1	7C2	CURB PLATES (High Side)		
1	7a5	L 102 x 102 x 13	480	
1	7a6	L 102 x 102 x 13	484	
1	7a7	L 127 x 76 x 13	478	
1	7a8	L 102 x 76 x 13	490	
1	7p6	Plate 13 x 232	565	
1	7p7	Plate 13 x 237	578	
1	7p8	Plate 16 x 50	605	
1	7p9	Plate 13 x 222	122	
1	7p10	Plate 13 x 211	122	
4	S1	Studs 19 x 180		
12		Hex Head Bolt 19 x 51 Lg with Washer and Nut		

(1) - 7C1 CURB PLATES
 (1) - 7C2 CURB PLATES
 ABUTMENT 1

SHOP DRAWINGS ARE REVIEWED UNLESS NOTED OTHERWISE

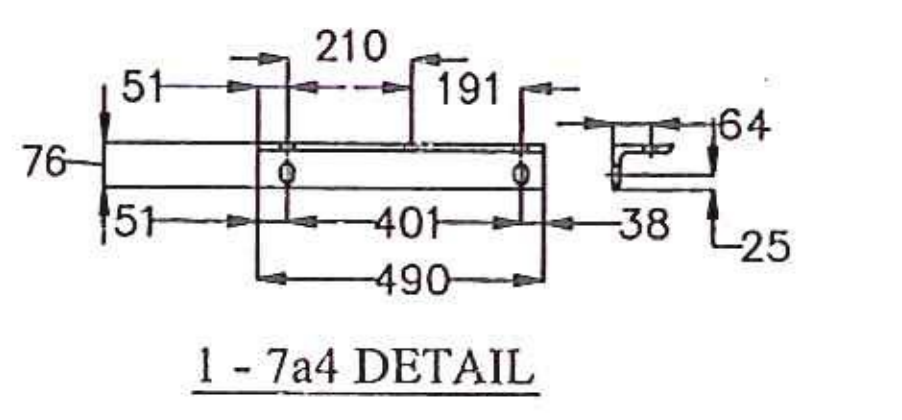
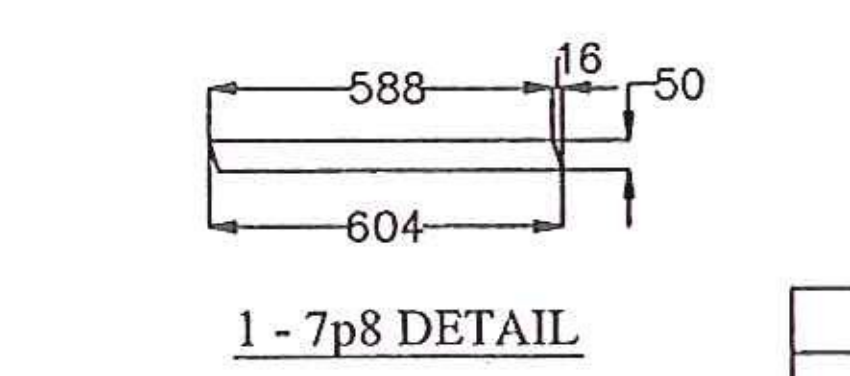
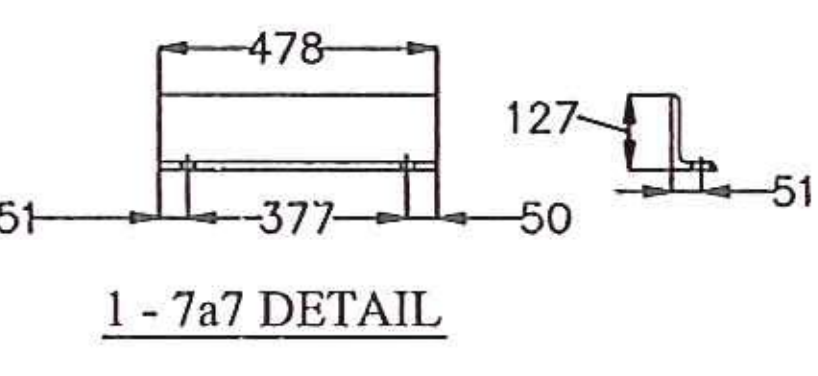
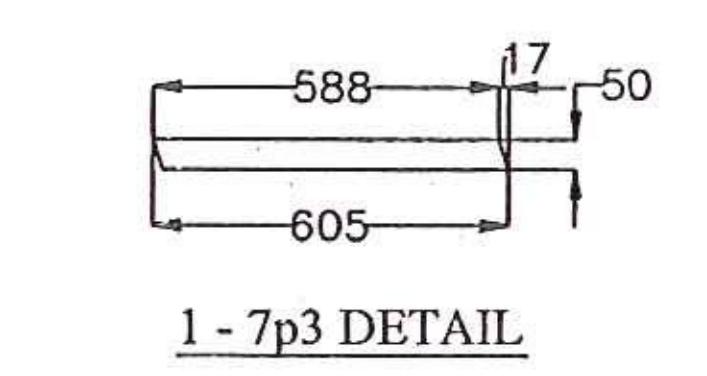
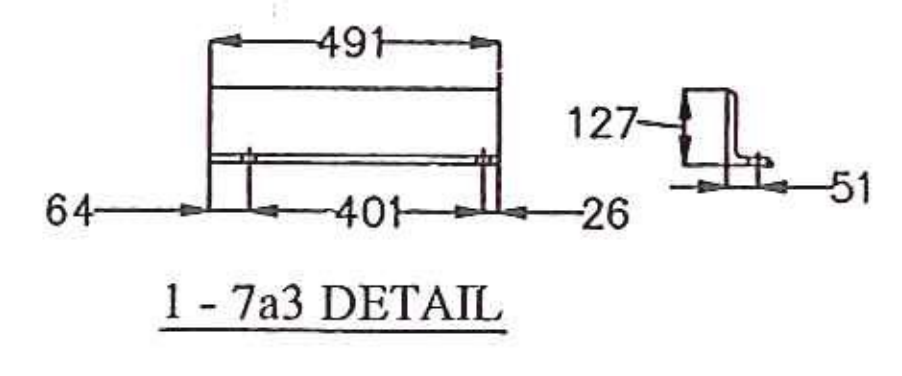
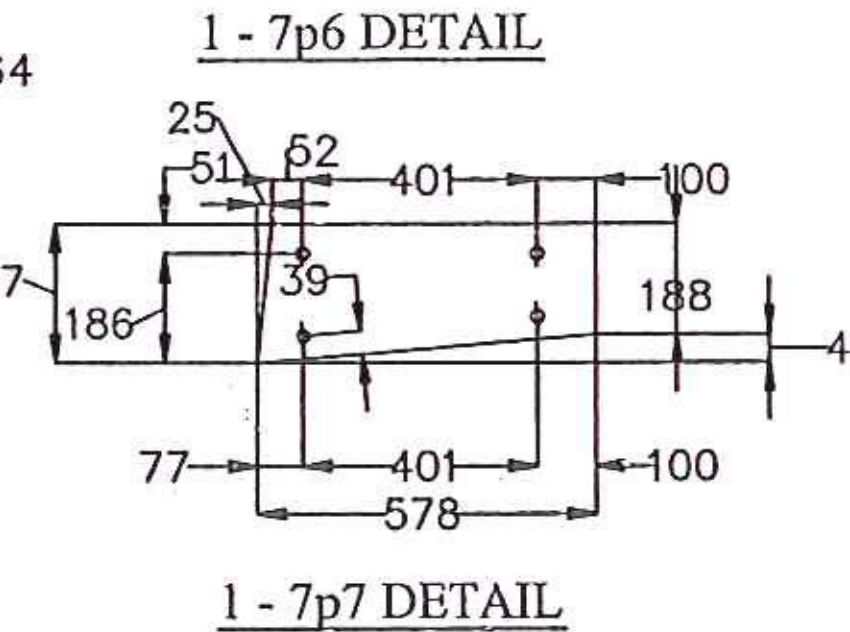
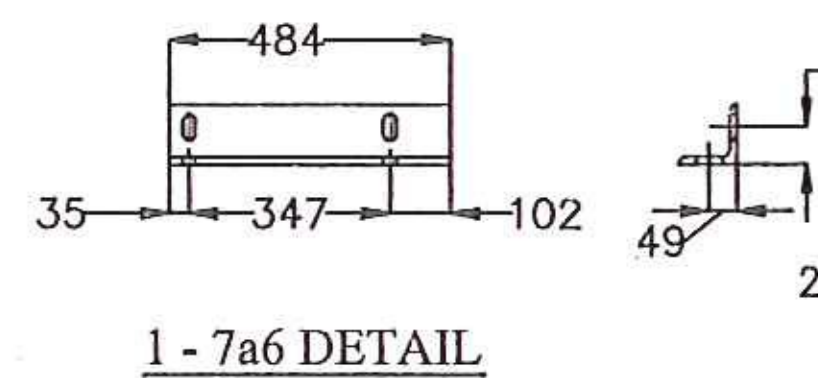
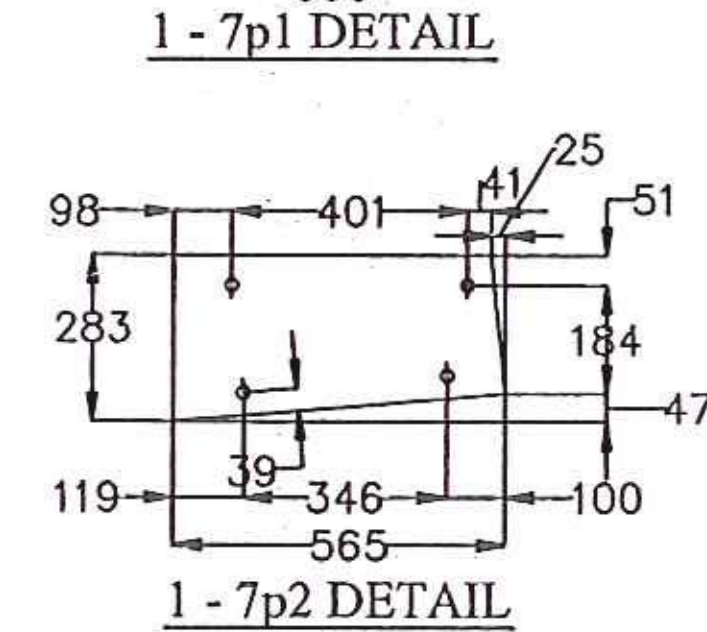
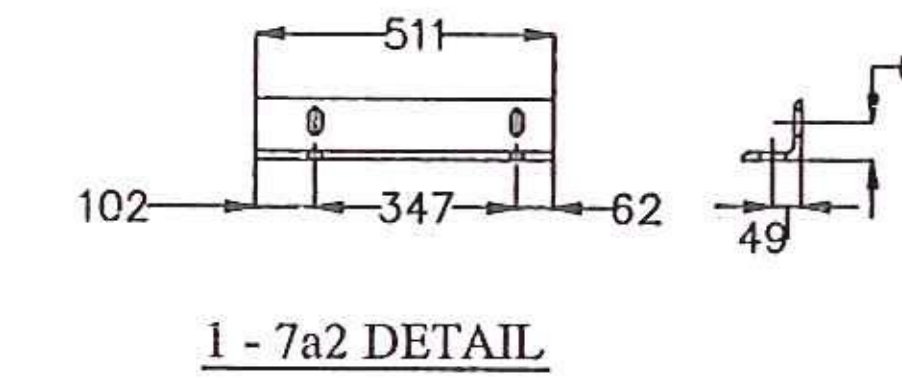
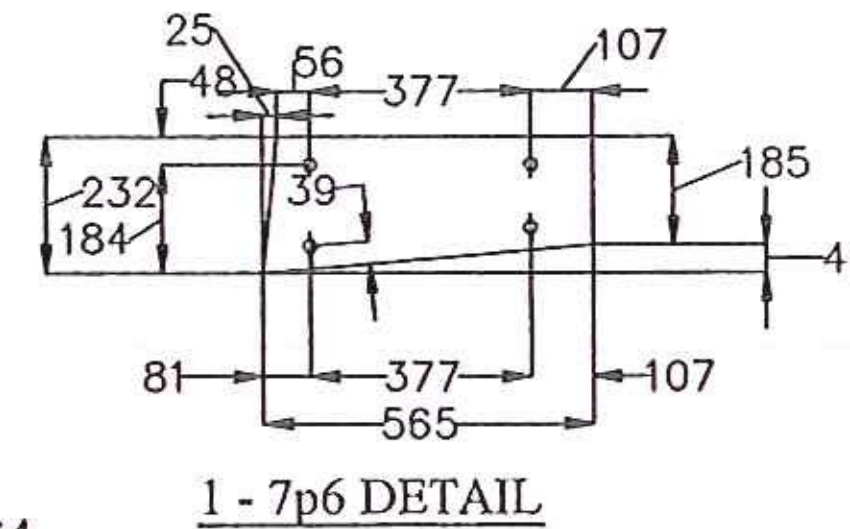
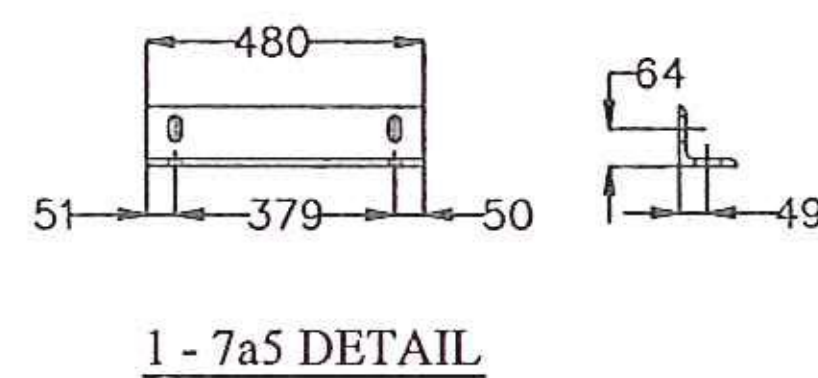
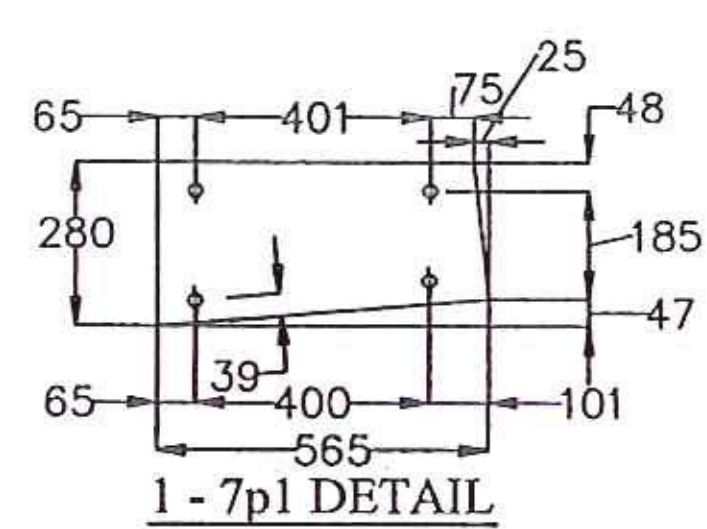
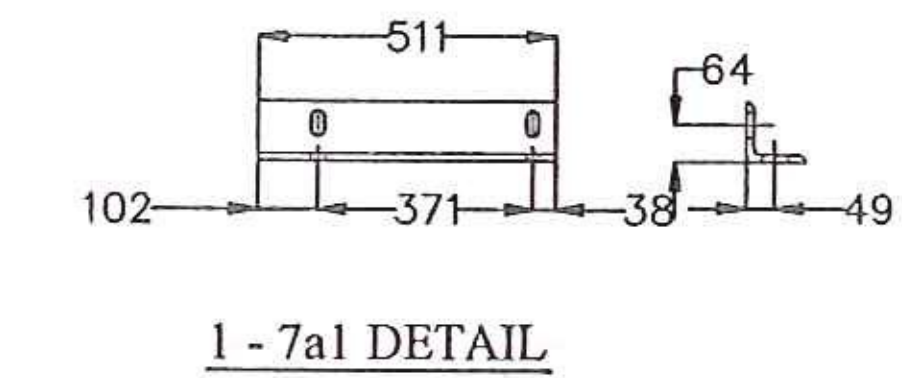
NO EXCEPTION TAKEN	<input checked="" type="checkbox"/>
REVISE AS NOTED	<input type="checkbox"/>
RESUBMISSION NOT REQUIRED	<input type="checkbox"/>
REVISE AS NOTED	<input type="checkbox"/>
RESUBMISSION REQUIRED	<input type="checkbox"/>
REJECTED	<input type="checkbox"/>

DATE: 7/21/10

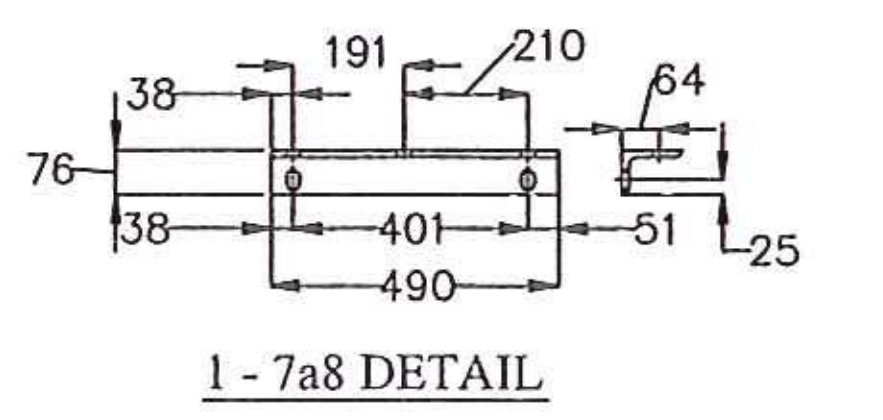
SIGNATURE: *Michael Chenette*

REVIEW BY STANTEC IS FOR THE SOLE PURPOSE OF ASCERTAINING GENERAL CONFORMITY WITH DESIGN. CONTRACTOR IS RESPONSIBLE FOR DIMENSIONS, FABRICATION AND CONSTRUCTION METHODS, COORDINATION OF SUB-TRADES, DETAIL DESIGN OF COMPONENTS, AND ERRORS OR OMISSIONS ON SHOP DRAWINGS.

METRIC



All holes 22 mm dia in plates



Long slots are 22 x 44 in 7a1 & 7a2
 Short slots are 22 x 33 in 7a3 & 7a4
 Holes 22 mm in 7a4

All holes 22 mm dia in plates

REV NO.	DATE	DESCRIPTION
1	7-14-2010	REVISED PER APPROVAL COMMENTS
0	6-21-2010	SUBMITTED FOR APPROVAL

HOLES AS NOTED

MATERIAL: AASHTO M 270M/M270 GRADE 250 GALV

DRAWING COVERS	
PROJECT	BENNINGTON
LOCATION	RAMP G/S OVER VT ROUTE 279 WB
ENGINEER	STATE OF VERMONT AOT / STANTEC
CUSTOMER	MILLER CONSTRUCTION

MERRIMACK SHEET METAL

119 HALL STREET
 CONCORD NH 03301

Tel. 603.224.7766
 Fax 603.224.7925

DRAWN BY: RL
 CHECKED BY: JD
 JOB NO. #3374
 DWG. F7