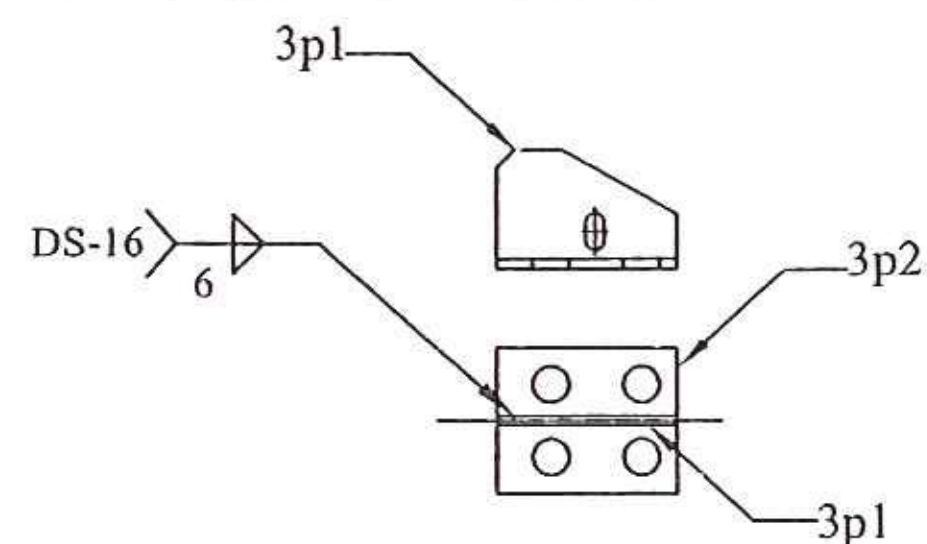
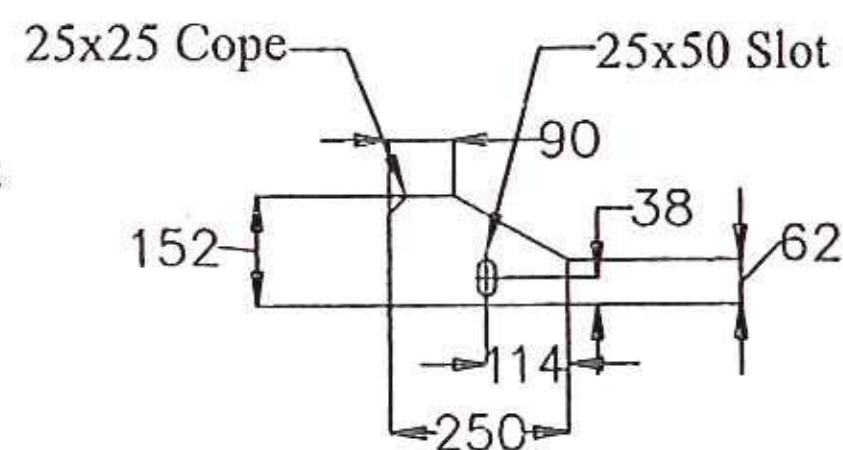


28 REQ'D - DETAIL 3p2 224 REQ'D - DETAIL 3b1

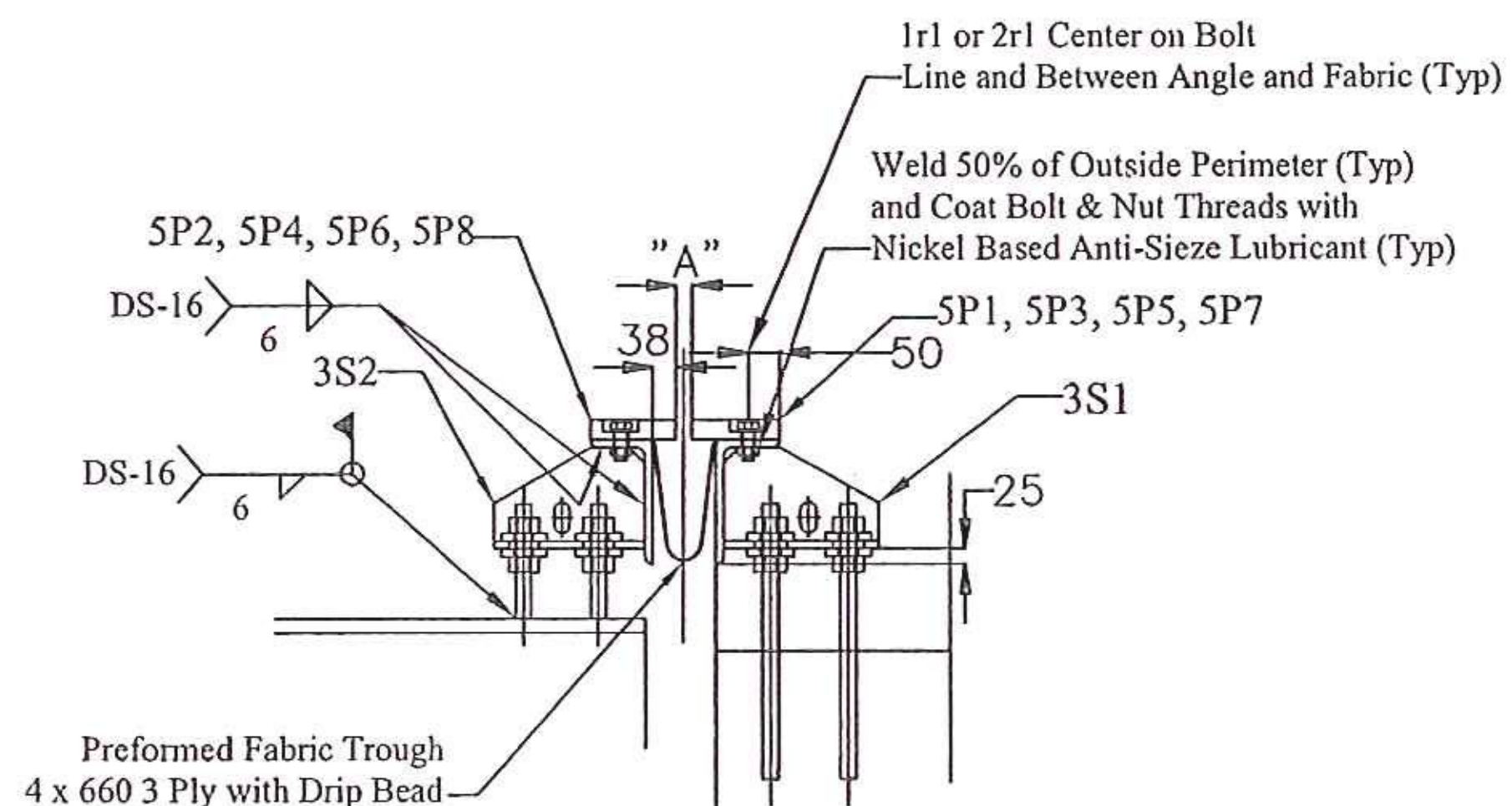


14 REQ'D - DETAIL 3S1
14 REQ'D - DETAIL 3S2



28 REQ'D - DETAIL 3p1

DETAIL OF SUPPORT PLATES



SECTION C-C
(ABUTMENT)

TEMPERATURE ADJUSTMENT TABLE - ABUT #1	
TEMPERATURE	'A'
-10 °C	36
0 °C	32
10 °C	28
20 °C	23
30 °C	21
40 °C	17

TEMPERATURE ADJUSTMENT TABLE - ABUT #2	
TEMPERATURE	'A'
-10 °C	39
0 °C	34
10 °C	30
20 °C	26
30 °C	22
40 °C	17

SHOP DRAWINGS ARE REVIEWED UNLESS NOTED OTHERWISE

NO EXCEPTION TAKEN	<input checked="" type="checkbox"/>
REVISE AS NOTED	<input type="checkbox"/>
RESUBMISSION NOT REQUIRED	<input type="checkbox"/>
REVISE AS NOTED	<input type="checkbox"/>
RESUBMISSION REQUIRED	<input type="checkbox"/>
REJECTED	<input type="checkbox"/>

DATE: 7/21/10

SIGNATURE: *Michael Chivetta*

REVIEW BY STANTEC IS FOR THE SOLE PURPOSE OF ASCERTAINING GENERAL CONFORMITY WITH DESIGN. CONTRACTOR IS RESPONSIBLE FOR DIMENSIONS, FABRICATION AND CONSTRUCTION METHODS, COORDINATION OF SUB-TRADES, DETAIL DESIGN OF COMPONENTS, AND ERRORS OR OMISSIONS ON SHOP DRAWINGS.



BILL OF MATERIALS

QTY	MARK	SHAPE	LENGTH	REMARKS
14	3S1	SUPPORT PLATE (ABUT)		
112	3b1	Bar 13 x 75 x	75	
14	3p1	Plate 13 x 152	250	
14	3p2	Plate 13 x 200	250	
56		25 Dia Threaded Rod x 450 Lg with 2 Nuts		
14	3S2	SUPPORT PLATE (DECK)		
112	3b1	Bar 13 x 75 x	75	
14	3p1	Plate 13 x 152	250	
14	3p2	Plate 13 x 200	250	
56		25 Dia Threaded Rod x 200 Lg with 2 Nuts		

EXPANSION JOINT NOTES:

1. PREFORMED FABRIC TROUGH SHALL BE CONTINUOUS AND SHALL CONFORM TO SUBSECTION 707.07.
2. BUTYL RUBBER TAPE SHALL CONFORM TO AASHTO M-198, TYPE B.
3. ALL STEEL COMPONENTS SHALL BE AASHTO M 270 GRADE 250.
4. ALL STEEL COMPONENTS SHALL BE GALVANIZED PER SUBSECTION 506.15, UNO.
5. BOLTS, NUTS & WASHERS SHALL CONFORM TO AASHTO M164 TYPE 1 UNO.
- 6.A DRIP BEAD 6x178 STRIP OF PREFORMED MATERIAL SHALL BE CEMENTED TO THE BOTTOM OF THE FABRIC TROUGH USING AN ADHESIVE APPROVED BY THE MANUFACTURER. THE DRIP BEAD SHALL BE APPLIED 25 FROM THE DOWNSPROUT END OF THE TROUGH.
7. THREADED ROD SHALL CONFORM TO ASTM F 568M CLASS 4.6. ASSOCIATED NUTS, AND WASHERS SHALL BE AASHTO M 291M AND SHALL CONFORM TO SUBSECTION 714.04.
8. BEVEL ALL EDGES 1.6.
9. FILL COUNTERBORED HOLES WITH HOT JOINT SEALER (STD SPEC 707.04) AFTER BOLT INSTALLATION.

METRIC

DRAWING COVERS

JOINT DETAILS - BRIDGE 14A

PROJECT	BENNINGTON
LOCATION	RAMP G/S OVER VT ROUTE 270 WB
ENGINEER	STATE OF VERMONT AOT / STANTEC
CUSTOMER	MILLER CONSTRUCTION

MERRIMACK SHEET METAL

119 HALL STREET
CONCORD NH 03301

Tel. 603.224.7766
Fax 603.224.7925

DRAWN BY:
RL

CHECKED BY:
JD

JOB NO:
#3374

DWG
F3

REV NO.	DATE	DESCRIPTION
1	7-14-2010	REVISED PER APPROVAL COMMENTS
0	6-21-2010	SUBMITTED FOR APPROVAL

HOLES AS NOTED

MATERIAL: AASHTO M 270M/M270 GRADE 250 CALV