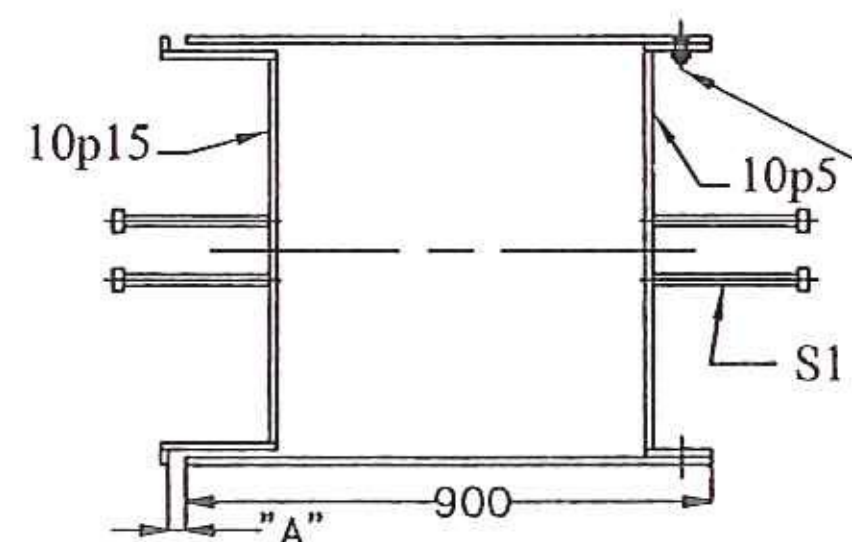
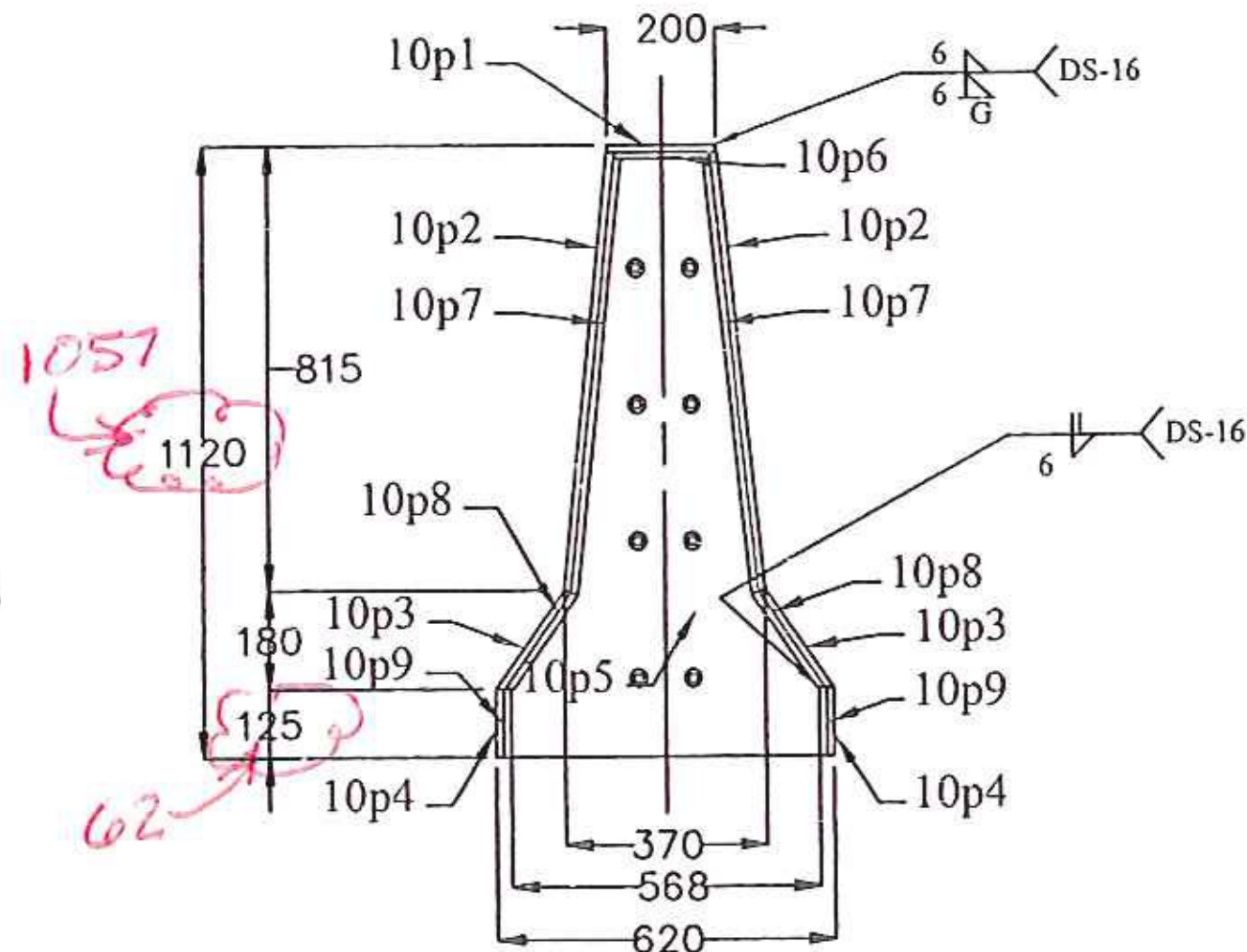
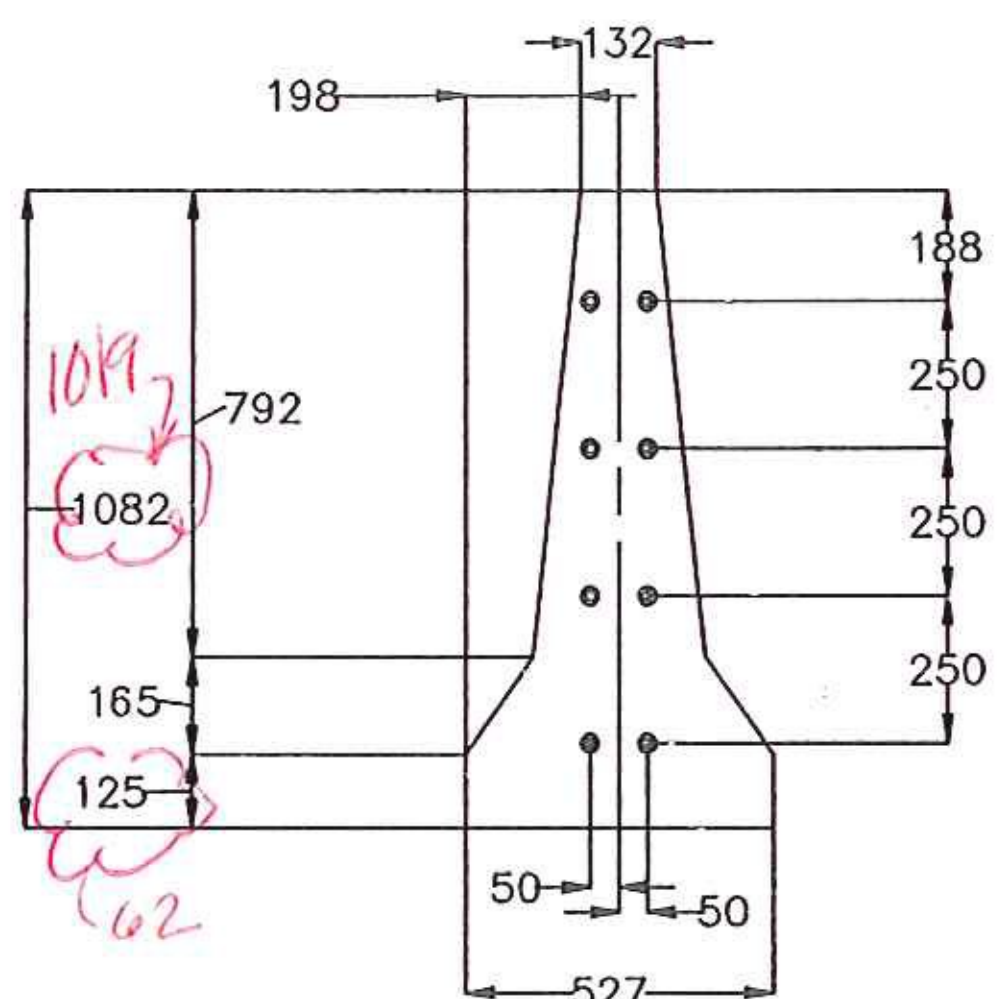


(4) - 10M1 MEDIAN PLATES

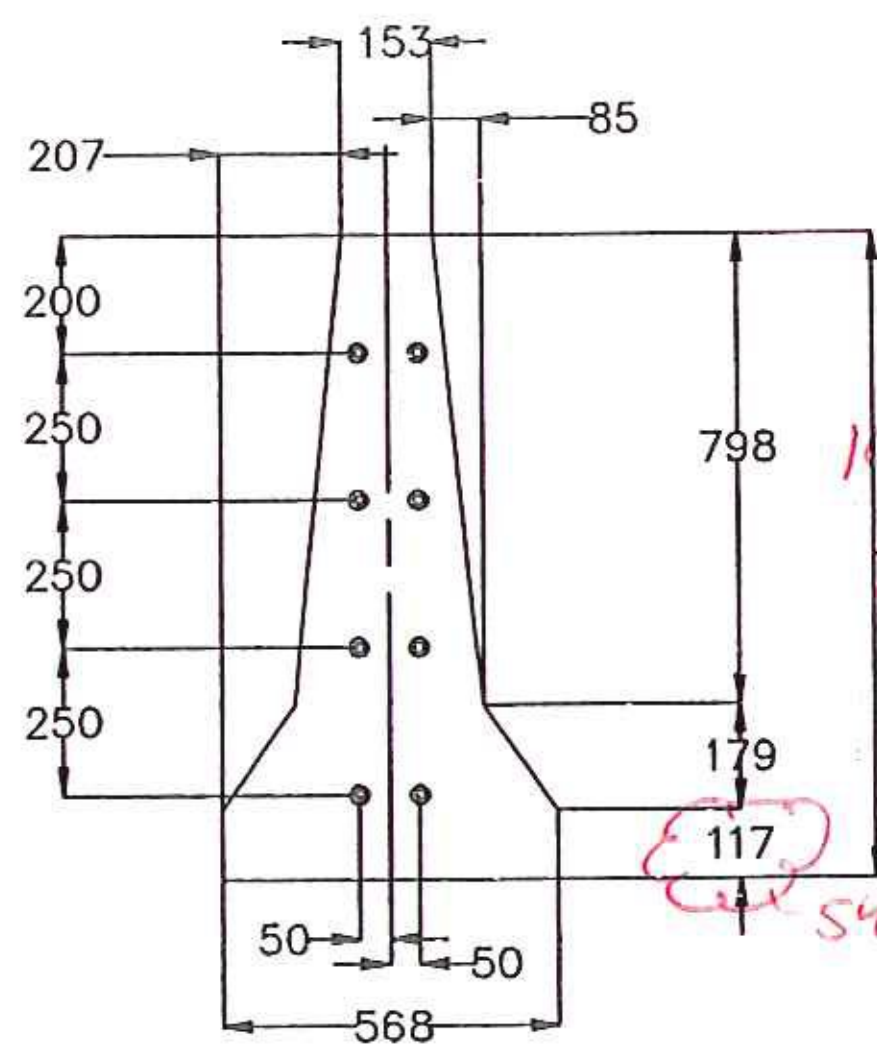


SECTION A-A

Weld 50% of Outside Perimeter (Typ)
and Coat Bolt & Nut Threads with
Nickel Based Anti-Sieze Lubricant (Typ)



4 - 10p15 & 32 - S1 DETAIL



4 - 10p5 & 32 - S1 DETAIL

BILL OF MATERIALS				
QTY	MARK	SHAPE	LENGTH	REMARKS
4	10M1	MEDIAN PLATES		
4	10b1	Bar 13 x 25	200	
8	10b2	Bar 13 x 25	794	
8	10b3	Bar 13 x 25	208	
8	10b4	Bar 13 x 25	125	
4	10p1	Plate 13 x 200	900	
8	10p2	Plate 13 x 806	900	
8	10p3	Plate 13 x 211	900	
8	10p4	Plate 13 x 125	900	
4	10p5	Plate 13 x 568	1094	
4	10p6	Plate 13 x 177	113	
8	10p7	Plate 13 x 799	113	
8	10p8	Plate 13 x 205	113	
8	10p9	Plate 13 x 125	113	
4	10p11	Plate 13 x 155	200	
8	10p12	Plate 13 x 790	200	
8	10p13	Plate 13 x 203	200	
8	10p14	Plate 13 x 125	200	
4	10p15	Plate 13 x 527	1082	
32	S1	Studs 16 x 200		
32		Flat Head S. S. Machine Screw 19 x 51 Lg with Nut		

REVIEW BY STANTEC IS FOR THE SOLE PURPOSE OF ASCERTAINING GENERAL CONFORMITY WITH DESIGN. CONTRACTOR IS RESPONSIBLE FOR DIMENSIONS, FABRICATION AND CONSTRUCTION METHODS, COORDINATION OF SUB-TRADES, DETAIL DESIGN OF COMPONENTS, AND ERRORS OR OMISSIONS ON SHOP DRAWINGS.

REVISIONS	DATE	BY	REASON
1	7/21/10	Michael Chavette	REVISION AS NOTED

DATE: 7/21/10
SIGNATURE: Michael Chavette

REVIEW BY STANTEC IS FOR THE SOLE PURPOSE OF ASCERTAINING GENERAL CONFORMITY WITH DESIGN. CONTRACTOR IS RESPONSIBLE FOR DIMENSIONS, FABRICATION AND CONSTRUCTION METHODS, COORDINATION OF SUB-TRADES, DETAIL DESIGN OF COMPONENTS, AND ERRORS OR OMISSIONS ON SHOP DRAWINGS.

METRIC

DRAWING COVERS	
MEDIAN PLATES - BRIDGES 14A, 13N, & 14S	
PROJECT	BENNINGTON
LOCATION	RAMP G/S OVER VT ROUTE 279 WB
ENGINEER	STATE OF VERMONT AOT / STANTEC
CUSTOMER	MILLER CONSTRUCTION

REV NO.	DATE	DESCRIPTION
0	7-14-2010	SUBMITTED FOR APPROVAL
HOLES AS NOTED		
MATERIAL: AASHTO M 270M/M270 GRADE 250 GALV		

MERRIMACK SHEET METAL

119 HALL STREET
CONCORD NH 03301

Tel. 603.224.7766
Fax 603.224.7925

DRAWN BY: RL
CHECKED BY: JD
JOB NO. #3374
DWG: F10