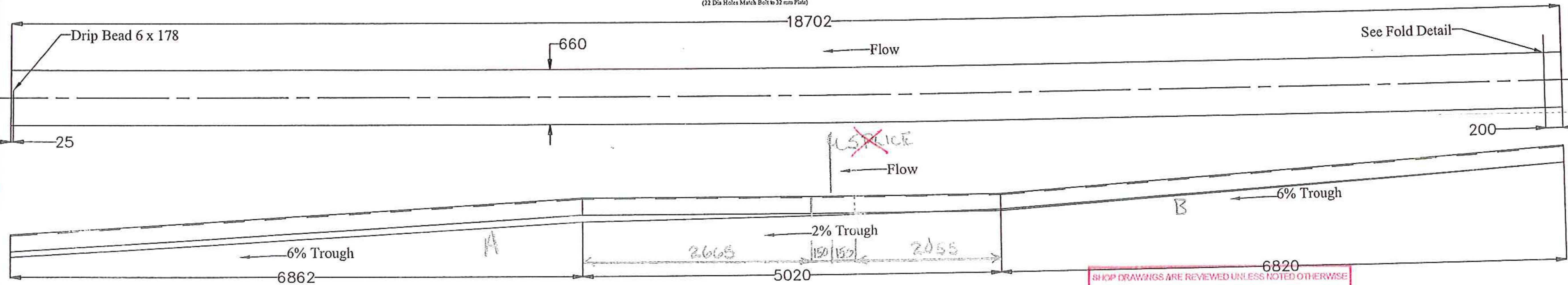


(1) 4T1 - FABRIC TROUGH A/B
 4 x 660 x 3 PLY
 (22 Dia Holes Match Bolt to 32 mm Plate)



(1) 4T2 - FABRIC TROUGH A/B
 4 x 660 x 3 PLY
 (22 Dia Holes Match Bolt to 32 mm Plate)

SHOP DRAWINGS ARE REVIEWED UNLESS NOTED OTHERWISE

NO EXCEPTION TAKEN	
REVISE AS NOTED	✓
RESUBMISSION NOT REQUIRED	
REVISE AS NOTED	
RESUBMISSION REQUIRED	
REJECTED	

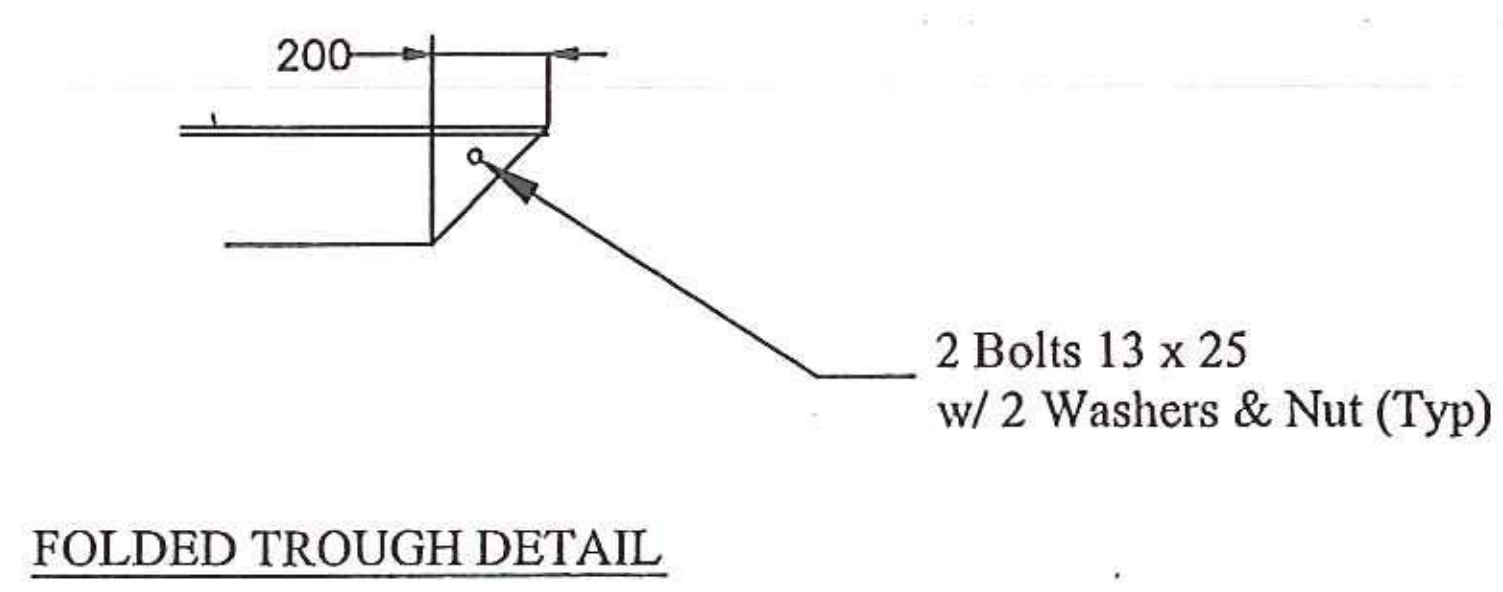
DATE: 3/17/11

SIGNATURE: *Medical Credits*

REVIEW BY STANTEC IS FOR THE SOLE PURPOSE OF ASCERTAINING GENERAL CONFORMITY WITH DESIGN. CONTRACTOR IS RESPONSIBLE FOR DIMENSIONS, FABRICATION AND CONSTRUCTION METHODS, COORDINATION OF SUB-TRADES, DETAIL DESIGN OF COMPONENTS, AND ERRORS OR OMISSIONS ON SHOP DRAWINGS.

6820

METRIC



BILL OF MATERIALS				
QTY	MARK	SHAPE	LENGTH	REMARKS
1	4T1	FABRIC TROUGH (ABUT 1)		2pc
1		Preformed Fabric Material 3 Ply x 660 x 18176		
2		Bolt 13 x 25 Lg with 2 Washers and Nut		
1	4T2	FABRIC TROUGH (ABUT 1)		2pc
1		Preformed Fabric Material 3 Ply x 660 x 18702		
2		Bolt 13 x 25 Lg with 2 Washers and Nut		

DRAWING COVERS	
PROJECT	BENNINGTON
LOCATION	US ROUTE 7 NB OVER VT ROUTE 279 EB
ENGINEER	STATE OF VERMONT AOT / STANTEC
CUSTOMER	MILLER CONSTRUCTION

MERRIMACK SHEET METAL

119 HALL STREET
 CONCORD NH 03301

Tel. 603.224.7766
 Fax 603.224.7925

DRAWN BY: RL
 CHECKED BY: JD
 JOB NO. #3374
 DWG. F4