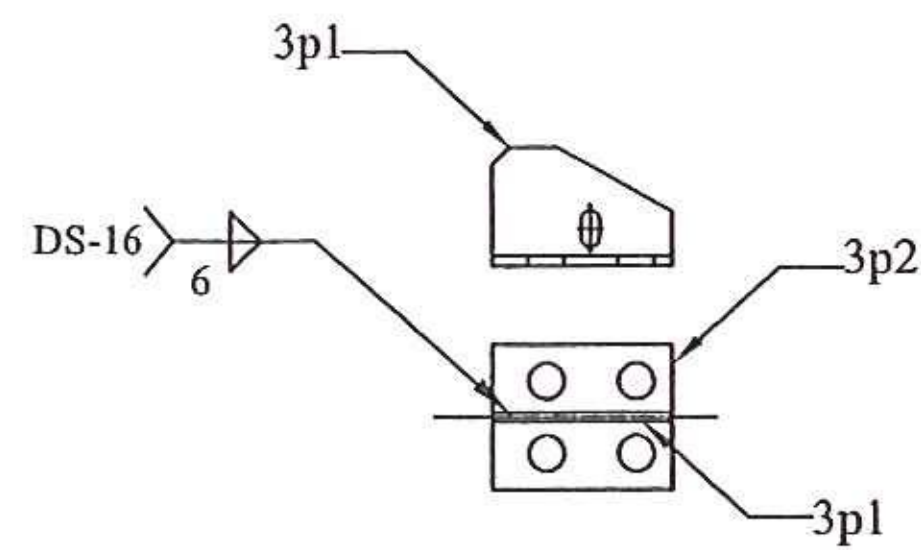
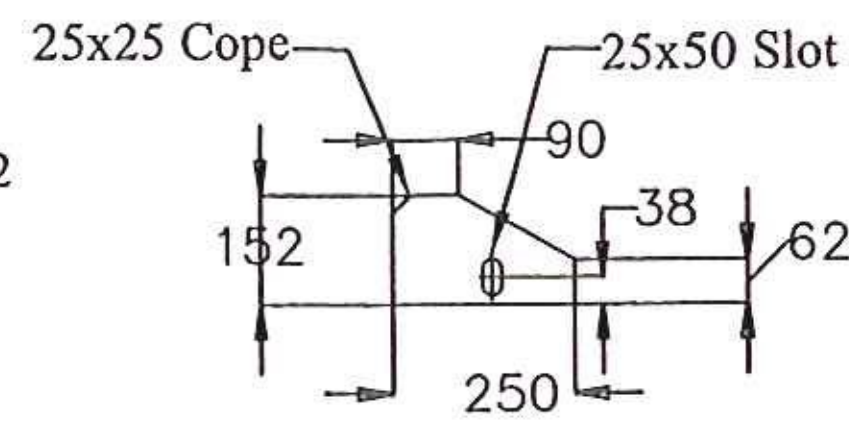


36 REQ'D - DETAIL 3p2 288 REQ'D - DETAIL 3b1

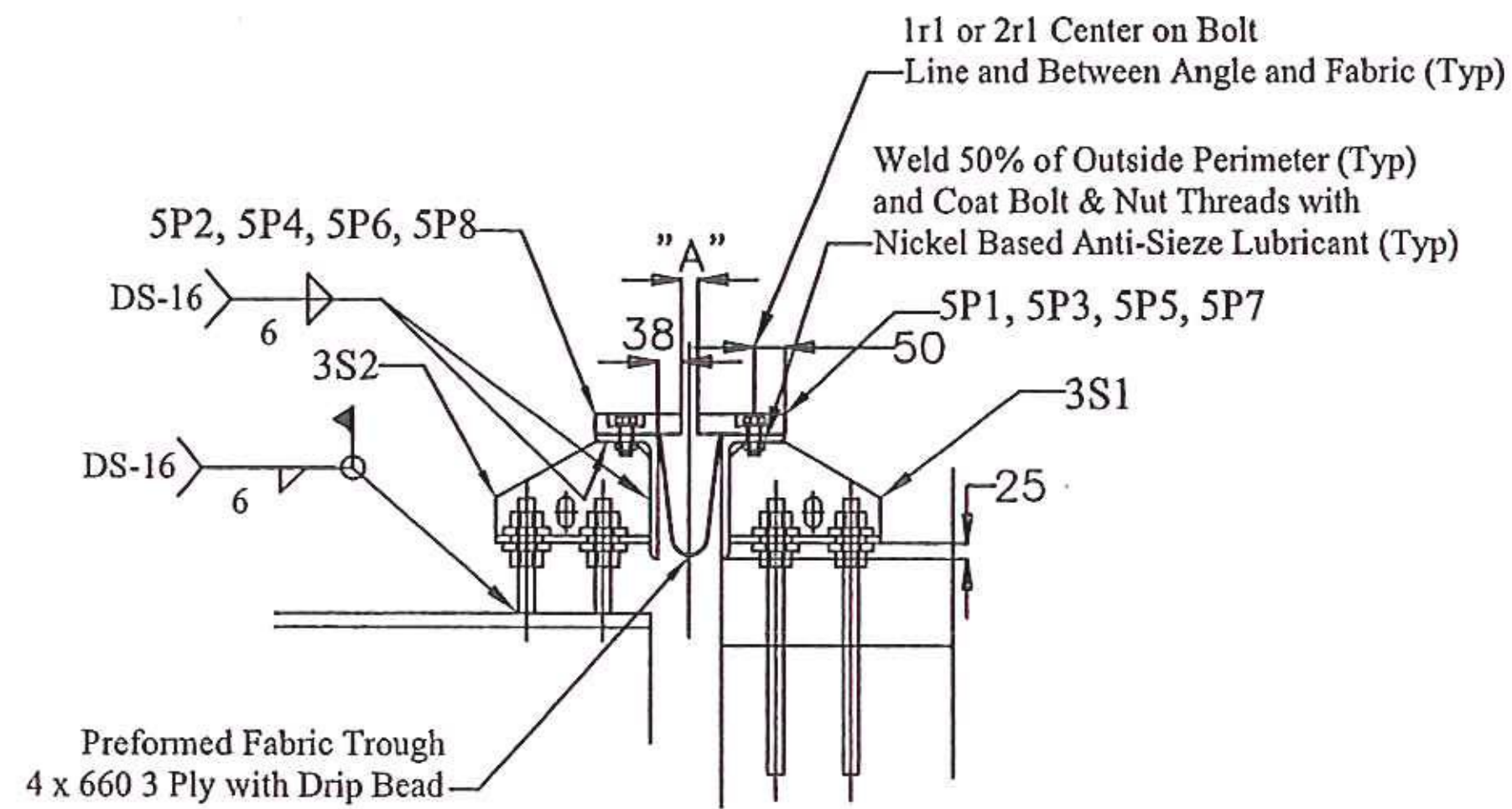


18 REQ'D - DETAIL 3S1
18 REQ'D - DETAIL 3S2



36 REQ'D - DETAIL 3p1

DETAIL OF SUPPORT PLATES



SECTION C-C
(ABUTMENT)

| TEMPERATURE ADJUSTMENT TABLE - ABUT #1 | |
|--|-----|
| TEMPERATURE | 'A' |
| -10 °C | 34 |
| 0 °C | 31 |
| 10 °C | 27 |
| 20 °C | 24 |
| 30 °C | 21 |
| 40 °C | 17 |

| TEMPERATURE ADJUSTMENT TABLE - ABUT #2 | |
|--|-----|
| TEMPERATURE | 'A' |
| -10 °C | 32 |
| 0 °C | 29 |
| 10 °C | 26 |
| 20 °C | 22 |
| 30 °C | 19 |
| 40 °C | 16 |

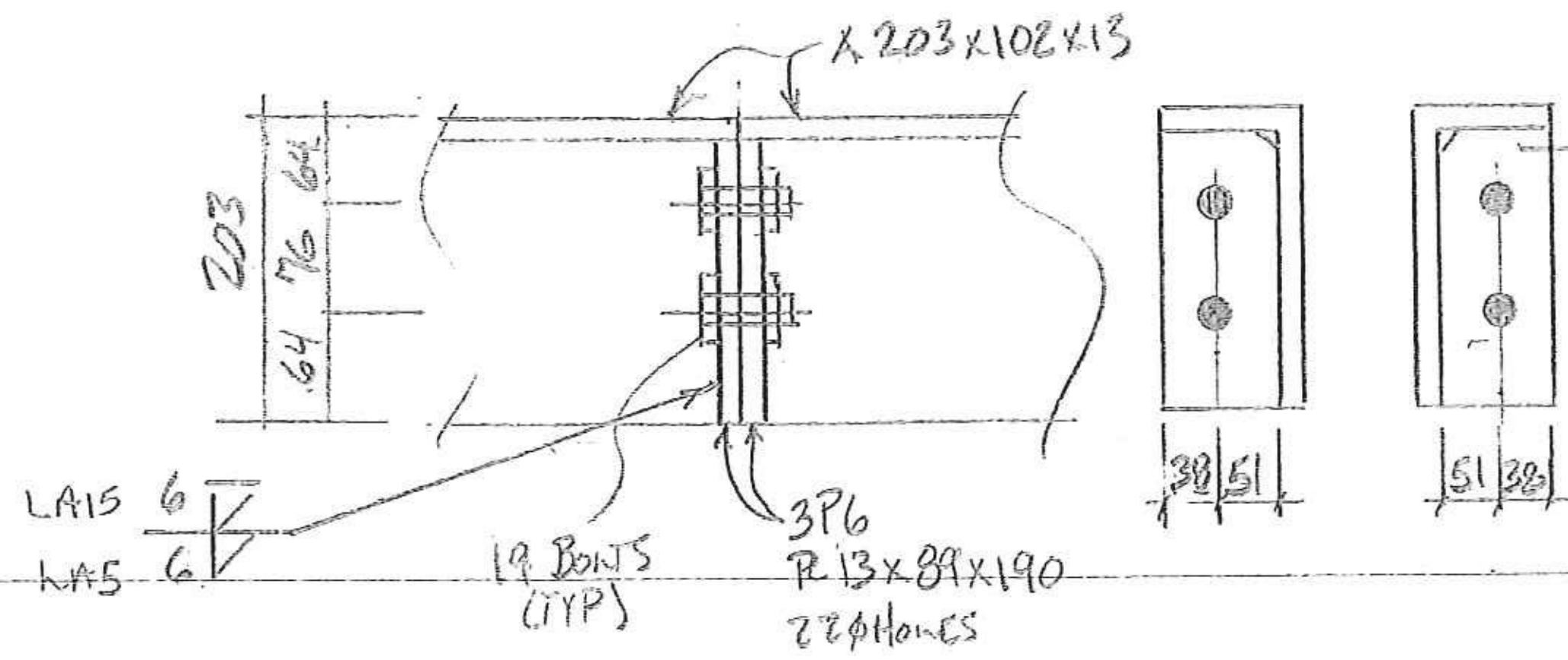
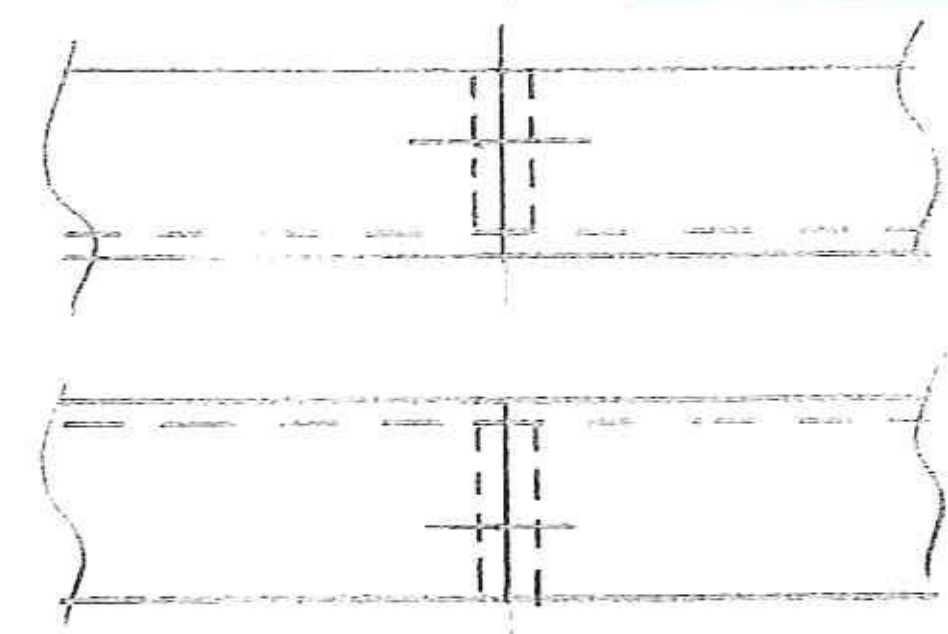
SHOP DRAWINGS ARE REVIEWED UNLESS NOTED OTHERWISE

| | |
|--|---|
| NO EXCEPTION TAKEN | |
| REVISE AS NOTED RESUBMISSION NOT REQUIRED | ✓ |
| REVISE AS NOTED RESUBMISSION REQUIRED | |
| REJECTED | |

DATE: 3/17/11

SIGNATURE: *Michael Smith*

REVIEW BY STANTEC IS FOR THE SOLE PURPOSE OF ASCERTAINING GENERAL CONFORMITY WITH DESIGN. CONTRACTOR IS RESPONSIBLE FOR DIMENSIONS, FABRICATION AND CONSTRUCTION METHODS, COORDINATION OF SUB-TRADES, DETAIL DESIGN OF COMPONENTS, AND ERRORS OR OMISSIONS ON SHOP DRAWINGS.



BILL OF MATERIALS

| QTY | MARK | SHAPE | LENGTH | REMARKS |
|-----|------|--|--------|---------|
| 18 | 3S1 | SUPPORT PLATE (ABUT) | | |
| 144 | 3b1 | Bar 13 x 75 x | 75 | |
| 18 | 3p1 | Plate 13 x 152 | 250 | |
| 18 | 3p2 | Plate 13 x 200 | 250 | |
| 72 | | 25 Dia Threaded Rod x 450 Lg with 2 Nuts | | |
| 4 | 3P6 | R13 x 89 | 190 | |
| 18 | 3S2 | SUPPORT PLATE (DECK) | | |
| 144 | 3b1 | Bar 13 x 75 x | 75 | |
| 18 | 3p1 | Plate 13 x 152 | 250 | |
| 18 | 3p2 | Plate 13 x 200 | 250 | |
| 72 | | 25 Dia Threaded Rod x 200 Lg with 2 Nuts | | |

EXPANSION JOINT NOTES:

1. PREFORMED FABRIC TROUGH SHALL BE CONTINUOUS AND SHALL CONFORM TO SUBSECTION 707.07.
2. BUTYL RUBBER TAPE SHALL CONFORM TO AASHTO M-198, TYPE II.
3. ALL STEEL COMPONENTS SHALL BE AASHTO M 270 GRADE 250.
4. ALL STEEL COMPONENTS SHALL BE GALVANIZED PER SUBSECTION 506.15, UNO.
5. BOLTS, NUTS & WASHERS SHALL CONFORM TO AASHTO M164 TYPE 1 UNO.
6. A DRIP BEAD 6x178 STRIP OF PREFORMED MATERIAL SHALL BE CEMENTED TO THE BOTTOM OF THE FABRIC TROUGH USING AN ADHESIVE APPROVED BY THE MANUFACTURER. THE DRIP BEAD SHALL BE APPLIED 25 FROM THE DOWNSPROUT END OF THE TROUGH.
7. THREADED ROD SHALL CONFORM TO ASTM F 568M CLASS 4.6. ASSOCIATED NUTS, AND WASHERS SHALL BE AASHTO M 291M AND SHALL CONFORM TO SUBSECTION 714.04.
8. BEVEL ALL EDGES 1:6.
9. FILL COUNTERBORED HOLES WITH HOT JOINT SEALER (STD SPEC 707.04) AFTER BOLT INSTALLATION.

METRIC

DRAWING COVERS

JOINT DETAILS - BRIDGE 13N

| | |
|----------|------------------------------------|
| PROJECT | BENNINGTON |
| LOCATION | US ROUTE 7 NB OVER VT ROUTE 279 EB |
| ENGINEER | STATE OF VERMONT AOT / STANTEC |
| CUSTOMER | MILLER CONSTRUCTION |

MERRIMACK SHEET METAL

119 HALL STREET
CONCORD NH 03301

Tel. 603.224.7766
Fax 603.224.7925

DRAWN BY: RL
CHECKED BY: JD
JOB NO: #3374
DWG: F3

| REV NO. | DATE | DESCRIPTION |
|---------|-----------|------------------------|
| 0 | 9-17-2010 | SUBMITTED FOR APPROVAL |
| | | |
| | | |

HOLES AS NOTED

MATERIAL: AASHTO M 270M/M270 GRADE 250 GALV