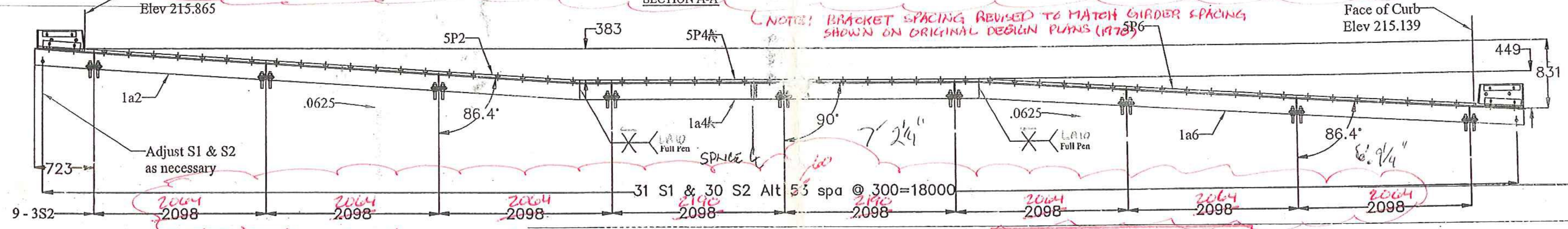
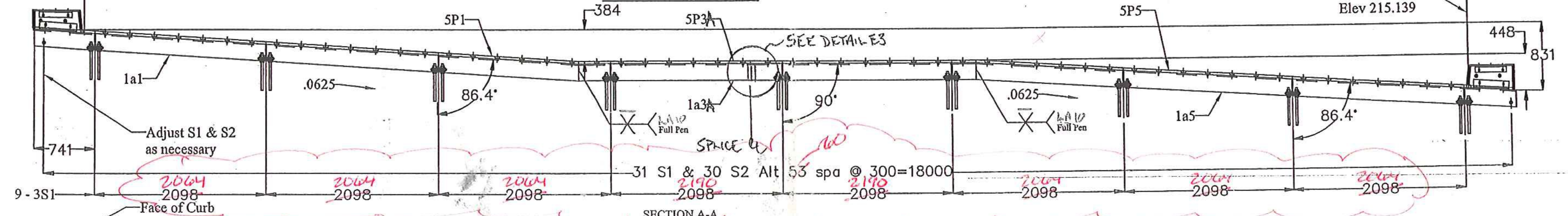
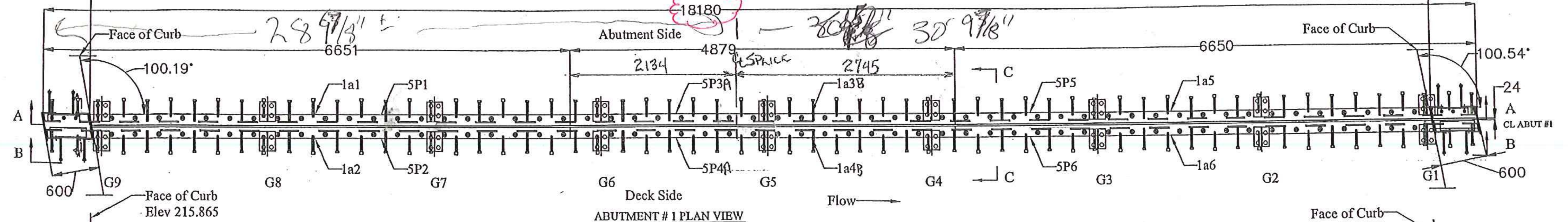
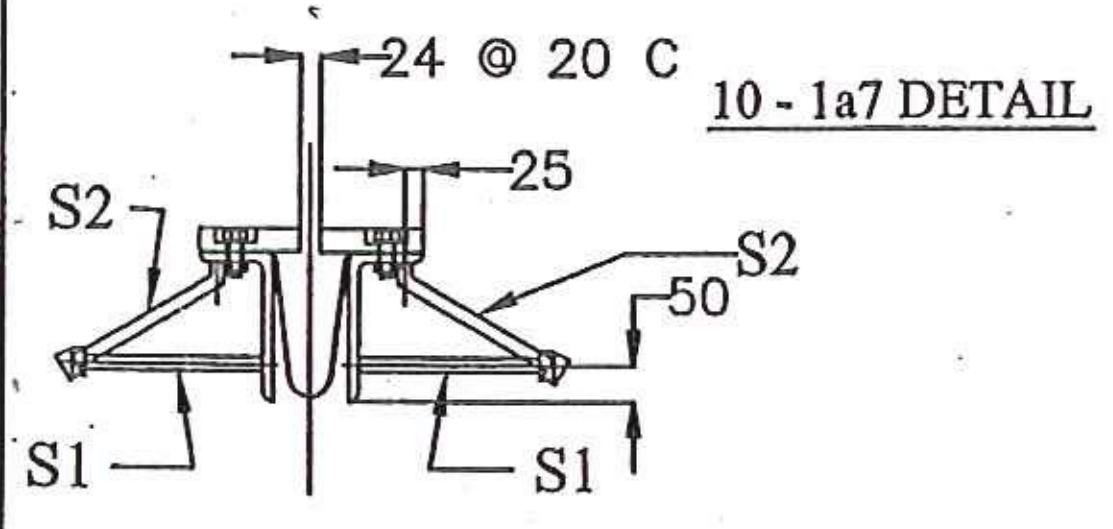
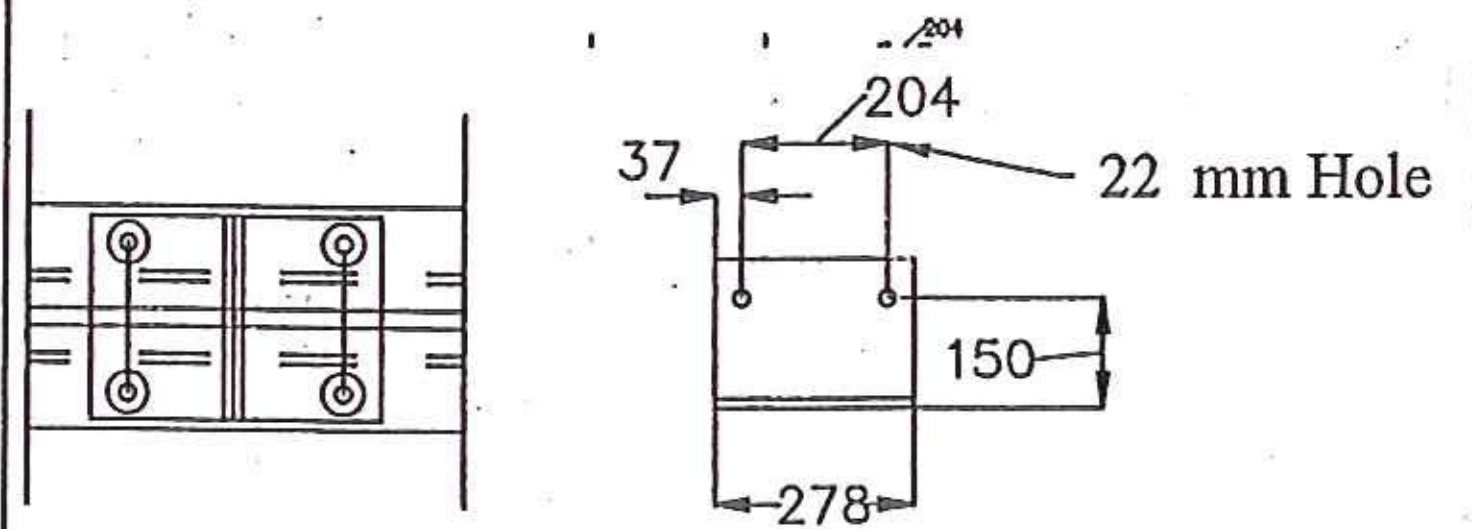


CONTRACTOR TO FIELD VERIFY PRIOR TO FABRICATION (SEE NOTE ON SHEET BR 706)



NOTE: BRACKET SPACING REVISED TO MATCH GIRDER SPACING SHOWN ON ORIGINAL DESIGN PLANS (1978)



BILL OF MATERIALS				
QTY	MARK	SHAPE	LENGTH	REMARKS
1	1J1	VERMONT JOINT ASSEMBLY		
1	1a1	L 203 x 102 x 13	6695	
1	1a2	L 203 x 102 x 13	6659	
1	1a3	L 203 x 102 x 13	4879	
1	1a4	L 203 x 102 x 13	4879	
1	1a5	L 203 x 102 x 13	6679	
1	1a6	L 203 x 102 x 13	6718	
62	S1	19 x 250 Welded Stud		Str
60	S2	19 x 250 Welded Stud		Bent
2	1r1	2 x 75 Butyl Rubber x		
9	3S1	SUPPORT PLATES		
9	3S2	SUPPORT PLATES		
1	4T1	TROUGH		

BILL OF MATERIALS				
QTY	MARK	SHAPE	LENGTH	REMARKS
1	5P1	JOINT PLATE		
1	5P2	JOINT PLATE		
1	5P3	JOINT PLATE A-2134 B-2745		
1	5P4	JOINT PLATE A-2134 B-2745		
1	5P5	JOINT PLATE		
1	5P6	JOINT PLATE		
1	7C1	CURB PLATES		
1	7C2	CURB PLATES		
1	8C1	REMOVABLE CURB PLATES		
1	8C1	REMOVABLE CURB PLATES		
1	10D1	DOWNSPOUT		
10	1a7	L 203 x 102 x 13	278	
20		Bol: 19 x 89 Lg		

SHOP DRAWINGS ARE REVIEWED UNLESS NOTED OTHERWISE

NO EXCEPTION TAKEN

REVISE AS NOTED

RESUBMISSION NOT REQUIRED

REVISE AS NOTED

RESUBMISSION REQUIRED

REJECTED

DATE: 3/17/11

SIGNATURE: Michael Cloutier

DATE SUBMITTED: 3/17/11

REVIEW BY STANTEC IS FOR THE SOLE PURPOSE OF ASCERTAINING GENERAL CONFORMITY WITH DESIGN. CONTRACTOR IS RESPONSIBLE FOR DIMENSIONS, FABRICATION AND CONSTRUCTION.

METHOD: 9-17-2010

REVISIONS: 10-17-2010

HOLES AS NOTED

MATERIAL: AASHTO M 270M/M270 GRADE 250 GALV

METRIC

DRAWING COVERS

EXPANSION JOINT LAYOUT 13N - ABUTMENT 1

PROJECT	BENNINGTON
LOCATION	US ROUTE 7 NB OVER VT ROUTE 279 EB
ENGINEER	STATE OF VERMONT AOT / STANTEC
CUSTOMER	MILLER CONSTRUCTION

MERRIMACK SHEET METAL

119 HALL STREET
CONCORD NH 03301
Tel. 603.224.7766
Fax 603.224.7925

DRAWN BY: RL

CHECKED BY: JD

NO: #3374

DWG: F1