

US ROUTE 7 NORTHBOUND



MILLED RUMBLE STRIPS
 STA. NB 9+640.4, RT. - STA. NB 9+790.0, RT.
 STA. SB 9+520.0, LT. - STA. SB 9+970.0, LT.
 STA. SB 9+829.5, RT. - STA. SB 9+970.0, RT.

DURABLE 150 WHITE LINE, RECESSED POLYUREA
 STA. L 1+000.0 TO STA. L 1+280.0, SOLID C
 STA. NB 9+520.0 TO STA. NB 9+580.5, SOLID LT.
 STA. NB 9+653.9 TO STA. NB 9+790.0, SOLID LT.
 STA. NB 9+640.4 TO STA. NB 9+790.0, SOLID RT.
 STA. NB 9+520.0 TO STA. NB 9+566.8, SOLID RT.
 STA. NB 9+520.0 TO STA. NB 9+550.5, DASHED LT.
 STA. SB 9+747.1 TO STA. SB 9+970.0, SOLID C

DURABLE 150 YELLOW LINE, RECESSED POLYUREA
 STA. L 1+072.5 TO STA. L 1+280.0, SOLID LT.
 STA. NB 9+520.0 TO STA. NB 9+790.0, SOLID LT. & C
 STA. SB 9+829.5 TO STA. SB 9+970.0, SOLID RT.

DURABLE 300 WHITE LINE, RECESSED POLYUREA
 STA. NB 9+520.0 TO STA. NB 9+593.9, SOLID RT.
 STA. NB 9+593.9 TO STA. NB 9+640.4, RT. (GORE)
 STA. NB 9+550.5 TO STA. NB 9+580.5, SOLID LT.
 STA. SB 9+747.1 TO STA. SB 9+829.5, RT. (GORE)

DURABLE 300 WHITE LINE, THERMOPLASTIC
 STA. NB 9+594.1 TO STA. NB 9+640.4, RT. (CHEVRONS)

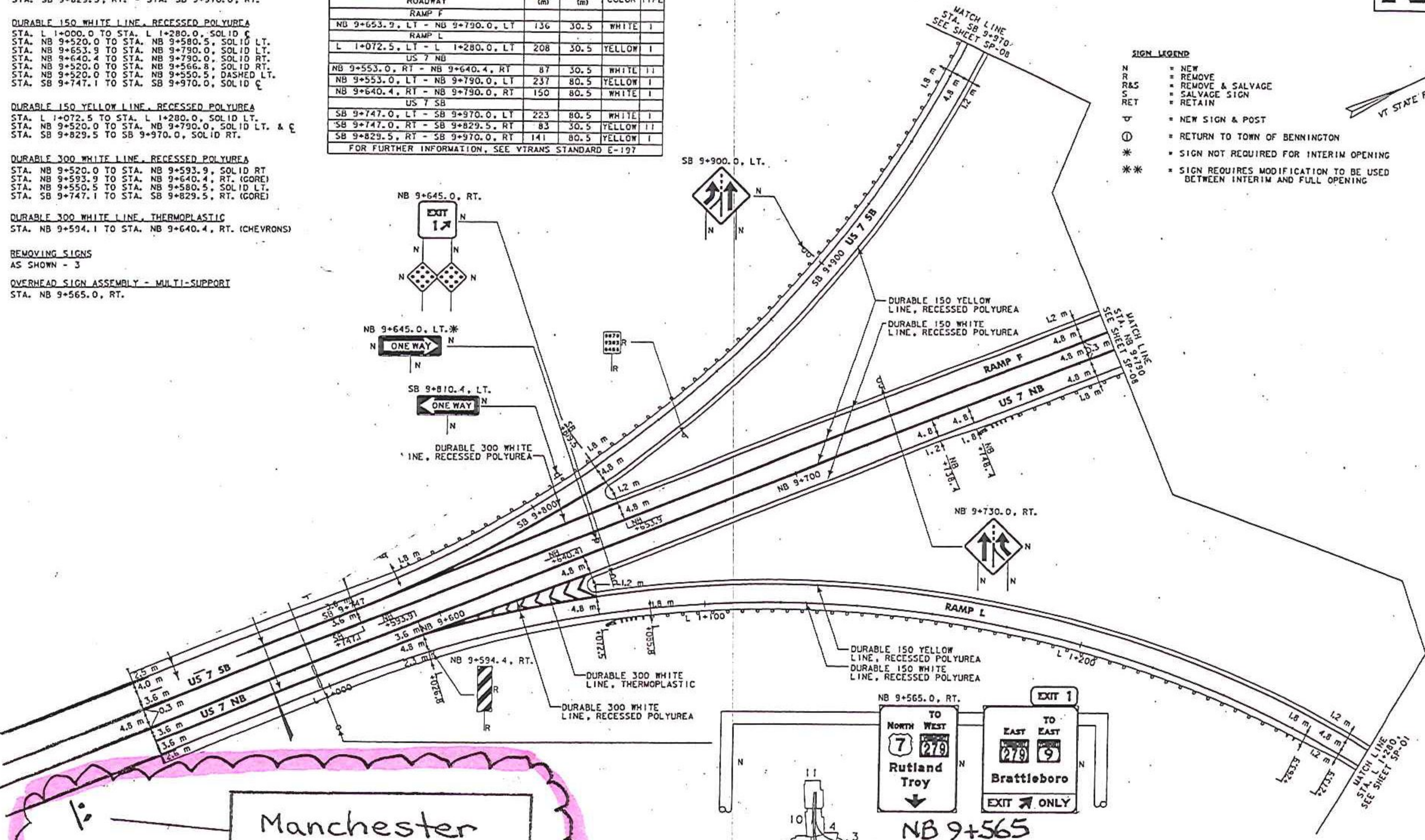
REMOVING SIGNS
 AS SHOWN - 3

OVERHEAD SIGN ASSEMBLY - MULTI-SUPPORT
 STA. NB 9+565.0, RT.

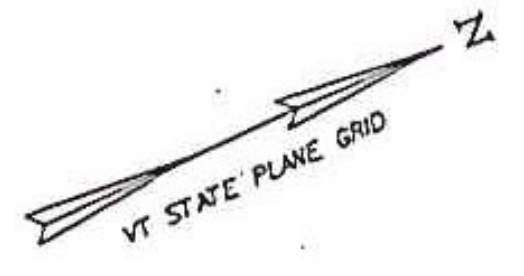
DELINEATOR WITH STEEL POST

ROADWAY	LENGTH (m)	SPACING (m)	COLOR	TYPE
RAMP F				
NB 9+653.9, LT - NB 9+790.0, LT	136	30.5	WHITE	I
RAMP L				
L 1+072.5, LT - L 1+280.0, LT	208	30.5	YELLOW	I
US 7 NB				
NB 9+553.0, RT - NB 9+640.4, RT	87	30.5	WHITE	II
NB 9+553.0, LT - NB 9+790.0, LT	237	80.5	YELLOW	I
NB 9+640.4, RT - NB 9+790.0, RT	150	80.5	WHITE	I
US 7 SB				
SB 9+747.0, LT - SB 9+970.0, LT	223	80.5	WHITE	I
SB 9+747.0, RT - SB 9+829.5, RT	83	30.5	YELLOW	II
SB 9+829.5, RT - SB 9+970.0, RT	141	80.5	YELLOW	I

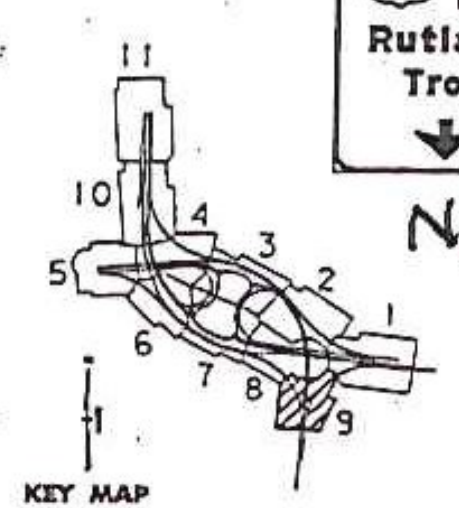
FOR FURTHER INFORMATION, SEE VTRANS STANDARD E-197



- SIGN LEGEND**
- N = NEW
 - R = REMOVE
 - RAS = REMOVE & SALVAGE
 - S = SALVAGE SIGN
 - RET = RETAIN
 - ⊕ = NEW SIGN & POST
 - ⊖ = RETURN TO TOWN OF BENNINGTON
 - * = SIGN NOT REQUIRED FOR INTERIM OPENING
 - ** = SIGN REQUIRES MODIFICATION TO BE USED BETWEEN INTERIM AND FULL OPENING



NB 9+410
 Manchester
 FOLLOW NORTH



10 0 10 M
 1:500 SCALE
 @ FULL SIZE



PROJECT NAME: BENNINGTON
 PROJECT NUMBER: NH 019-K54
 FILE NAME: ...20100409pvm_plans.ppt
 DESIGN SUPERVISOR: GREG EDWARDS
 DESIGNED BY: MARC FOISY
 SIGNED AND MARKINGS 3/2/09

PLOT DATE: 1/26/2010
 DRAWN BY: STANTEC
 CHECKED BY: GARY SANTY
 SHEET 181 OF 468

RECORD PLANS