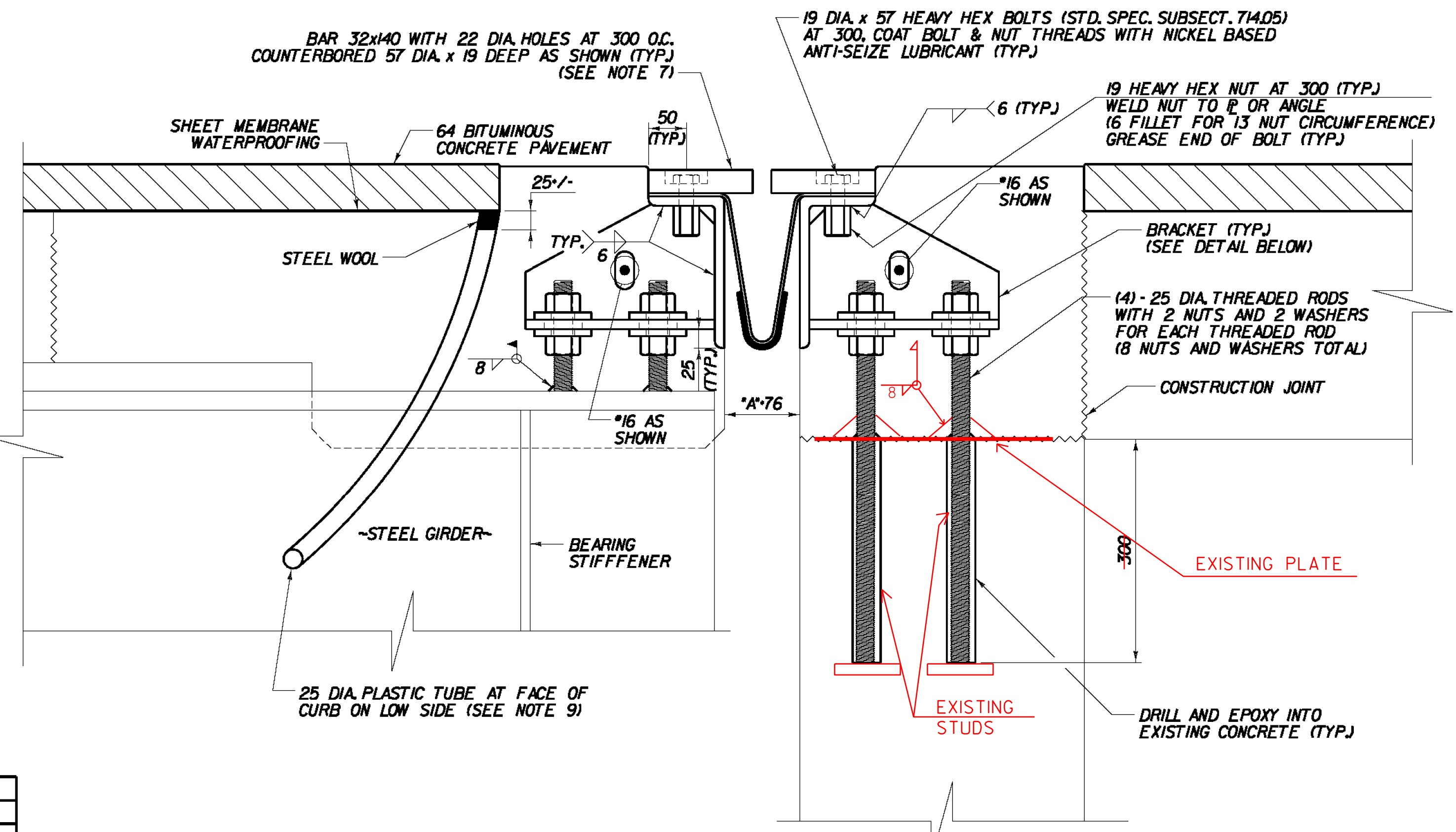


SECTION A-A
PROPOSED SECTION BETWEEN GIRDERS IN ROADWAY
 (NORMAL TO CL BEARING)
 SCALE 1:5

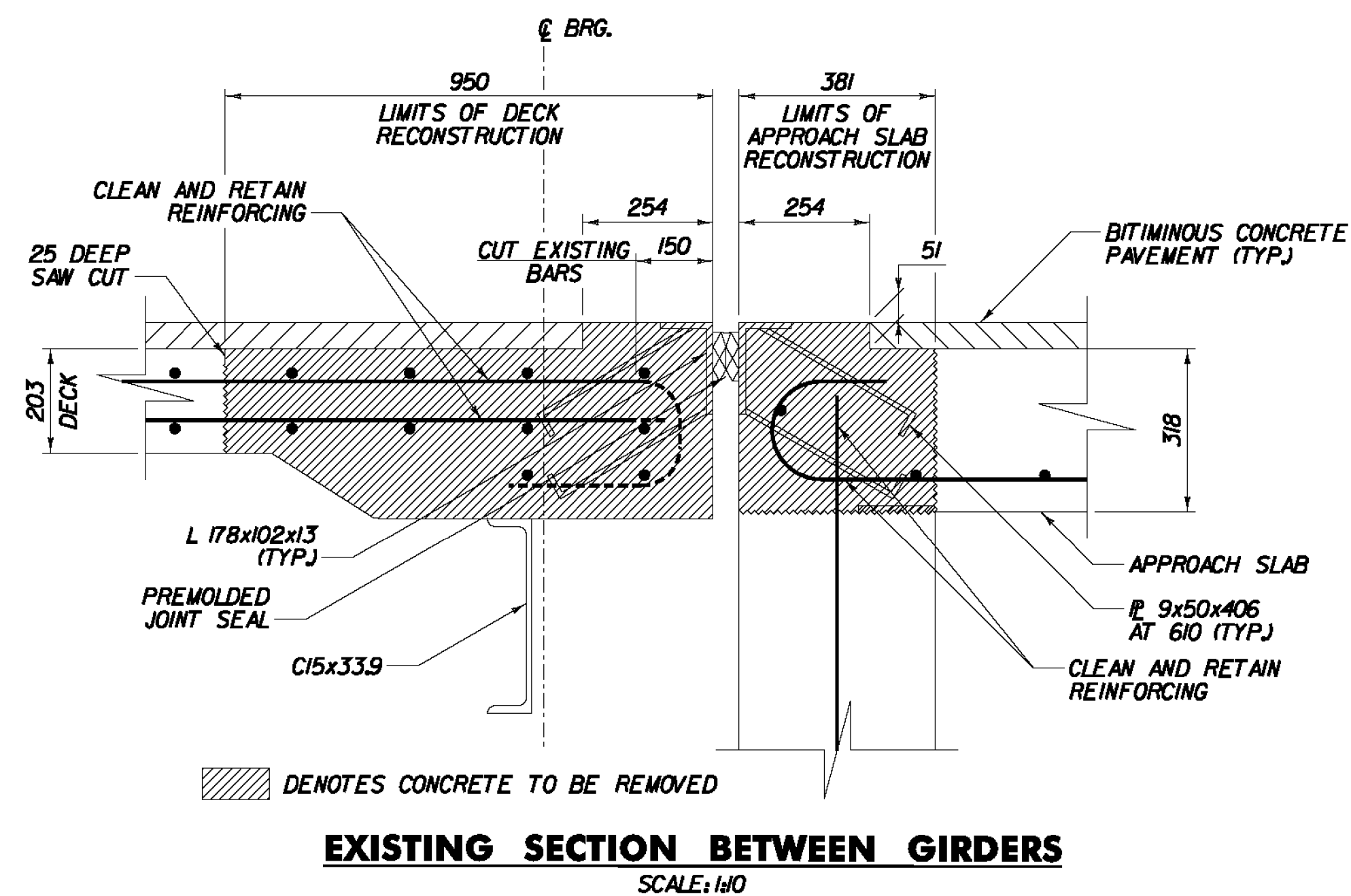


SECTION B-B
TYPICAL SECTION AT GIRDERS IN ROADWAY
 (NORMAL TO CL BEARING)
 SCALE 1:5

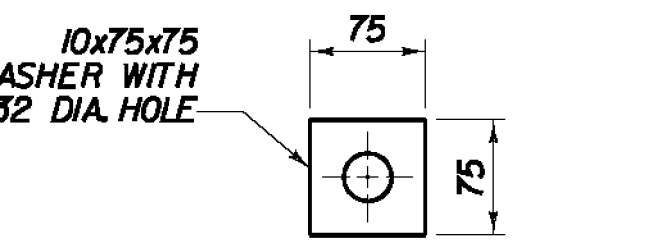
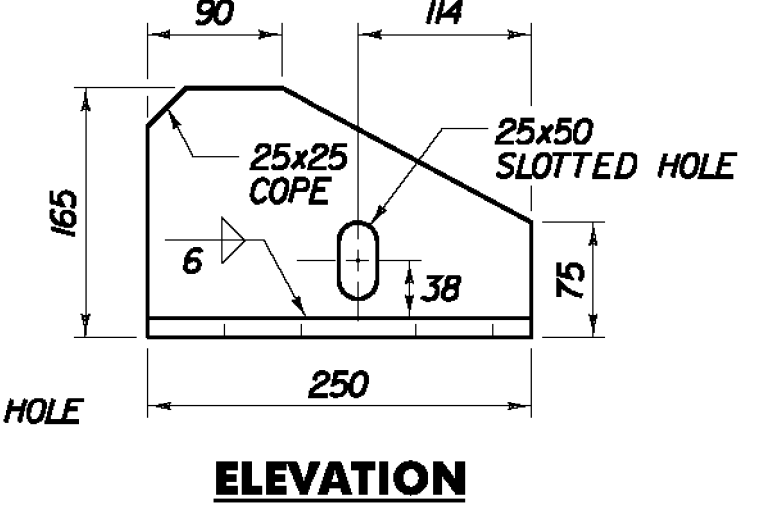
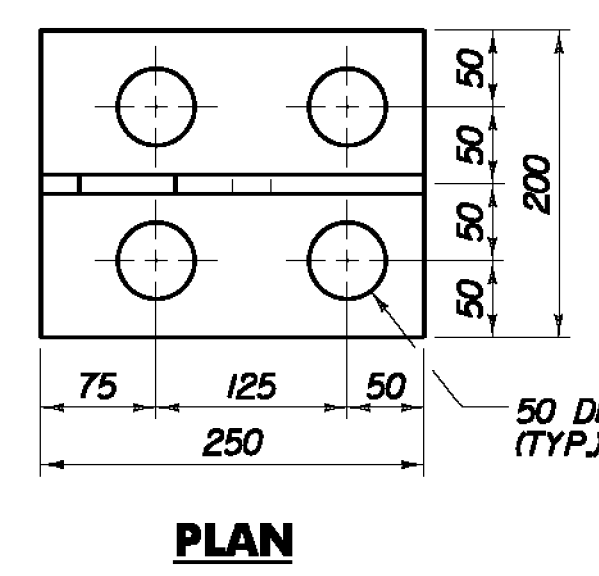
EXPANSION JOINT NOTES

1. DETAILS ON THIS SHEET AND THE EXPANSION JOINT PLAN SHEET ARE FOR ITEM 516J1 BRIDGE EXPANSION JOINT, VERMONT.
2. PREFORMED FABRIC MATERIAL SHALL BE CONTINUOUS AND SHALL CONFORM TO SUBSECTION 707.01 OF THE STANDARD SPECIFICATIONS.
3. BUTYL RUBBER TAPE SHALL CONFORM TO SUBSECTION 707.12 OF THE STANDARD SPECIFICATIONS.
4. THE FINAL FINISH OF THE EXPANSION DEVICE SHALL BE COVERED DURING THE PLACING OF BRIDGE DECK CONCRETE.
5. ALL STEEL COMPONENTS SHALL BE AASHTO M 270M/M 270 GRADE 250 GALVANIZED OR METALIZED AS PER SUBSECTION 506J5(a) OR (b) OF THE STANDARD SPECIFICATIONS UNLESS OTHERWISE SPECIFIED. THREADED RODS SHALL CONFORM TO ASTM F 568M CLASS 4.6. THE NUTS FOR THE THREADED RODS SHALL BE AASHTO M 291M.
6. THE ITEM "BRIDGE EXPANSION JOINT, VERMONT" SHALL INCLUDE THE FABRICATION AND ERECTION OF THE COMPLETE JOINT ASSEMBLY INCLUDING ALL STEEL PLATES, BRACKETS, ANGLES, WELDED STUDS OR RODS, PREFORMED FABRIC DRAIN TROUGH MATERIAL AND PLASTIC DRAIN TUBES, BUTYL RUBBER TAPE AND ANY OTHER MISCELLANEOUS MATERIAL NECESSARY TO INSTALL JOINT.
7. THE 102x203x13 ANGLES SHALL BE FURNISHED AS ONE CONTINUOUS PIECE. THE 32x140 BARS EACH SIDE OF THE JOINT SHALL BE PROVIDED IN TWO EQUAL LENGTHS.
8. COAT CONCRETE CONTACT SURFACES WITH EPOXY BONDING COMPOUND MEETING THE REQUIREMENTS OF SUBSECTION 719.02. PAYMENT SHALL BE INCLUDED IN THE UNIT PRICE BID FOR ITEM 516J1 BRIDGE EXPANSION JOINT, VERMONT.
9. A 25 DIAMETER PLASTIC TUBE (CONFORMING TO STANDARD SPECIFICATION 740.01) SHALL BE INSTALLED AS SHOWN AT THE FACE OF THE CURB. THE UPPER END IS TO BE PLUGGED WITH STEEL WOOL AND THE LOWER END IS TO EXTEND BELOW THE BOTTOM OF THE ADJACENT BEAM. THE DRAIN TUBES SHALL BE FASTENED TO THE BEAMS USING A METHOD APPROVED BY THE ENGINEER.
10. FILL COUNTERBORED HOLES WITH HOT POURED JOINT SEALER AFTER BOLT INSTALLATION. PAYMENT FOR THE WORK SHALL BE INCIDENTAL TO ITEM 516J1.
11. A DRIP BEAD OF 6x178 STRIP OF PREFORMED MATERIAL SHALL BE CEMENTED TO THE BOTTOM OF THE FABRIC TROUGH USING AN ADHESIVE APPROVED BY THE MANUFACTURER. THE DRIP BEAD SHALL BE APPLIED 25 FROM THE DOWNSPOUT END OF THE TROUGH.
12. ALL FABRIC TROUGHS AND DOWNSPOUTS SHALL BE THOROUGHLY CLEANED AND FLUSHED BY THE CONTRACTOR AFTER ALL PAVING IS COMPLETED. ALL COSTS ASSOCIATED WITH THIS WORK SHALL BE INCIDENTAL TO ITEM 490.30, "SUPERPAVE BITUMINOUS CONCRETE PAVEMENT". FOLLOWING PAVING, ANY BITUMINOUS CONCRETE PAVEMENT THAT IS LODGED IN THE EXPANSION JOINTS, OR THAT ENTERS DRAIN TROUGHS, SCUPPERS, HOPPERS OR DOWNSPOUTS, SHALL BE REMOVED BY THE CONTRACTOR AT NO COST TO THE STATE.
13. THE EXPANSION JOINT SHALL BE SHOP ASSEMBLED AND SHIPPED AS ONE UNIT.
14. PRIOR TO GALVANIZING OR METALIZING, ALL CORNERS AND EDGES OF STEEL PLATES, SHAPES, ETC., SHALL BE GROUNDED TO A 16 RADIUS.
15. TEMPORARY SHIPPING ATTACHMENTS SHALL BE ATTACHED BY BOLTING; WELDING WILL NOT BE PERMITTED.
16. PROJECTING THREADS OF THE 19 BOLTS IN THE JOINT SHALL BE GREASED BY THE CONTRACTOR PRIOR TO PLACING ADJACENT CONCRETE. THIS WILL FACILITATE BOLT REMOVAL IF REQUIRED IN THE FUTURE.

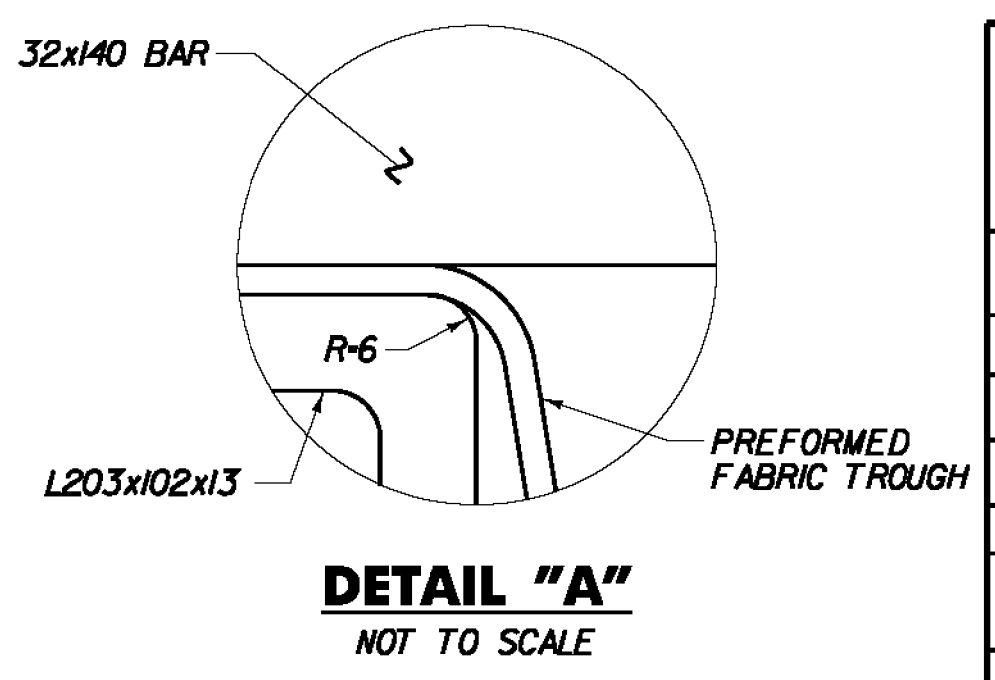
TEMP	"A" DIST.	
	ABUT. 1	ABUT. 2
-20° C	40	43
-10° C	36	39
0° C	32	34
10° C	28	30
20° C	25	26
30° C	21	22
40° C	17	17



EXISTING SECTION BETWEEN GIRDERS
 SCALE: 1:10



BRACKET DETAILS
 SCALE 1:5
 NOTE: ALL PLATES SHALL BE 13 THICK UNO.



DETAIL "A"
 NOT TO SCALE

STATE OF VERMONT
AGENCY OF TRANSPORTATION

Town Of	BENNINGTON	Bridge No.	145
Highway No.		Log Sta.	
		Surv. Sta.	
US ROUTE 7 SB OVER VT ROUTE 279 WB			
EXPANSION JOINT DETAIL SHEET 1			
Designed By	M. CHENETTE	Drawn By	J. SOTER
Checked By	M. CHENETTE	Date	11/09
		Bridge Design Supervisor	G. BOGUE
PROJECT	BENNINGTON	Date	11/09
		PROJECT NO.	NH FO19-1(54)

Stantec
 I.G.C. info
 Bridge Sheet No. BR908
 Sheet 302 of 468

1/26/2010 4:55:33 PM v:\1953\get\1953\002\st\tr\fig\cur\design\fig\1\toplot - files\308-S175B-EXP.dwg - D:\st\st\...