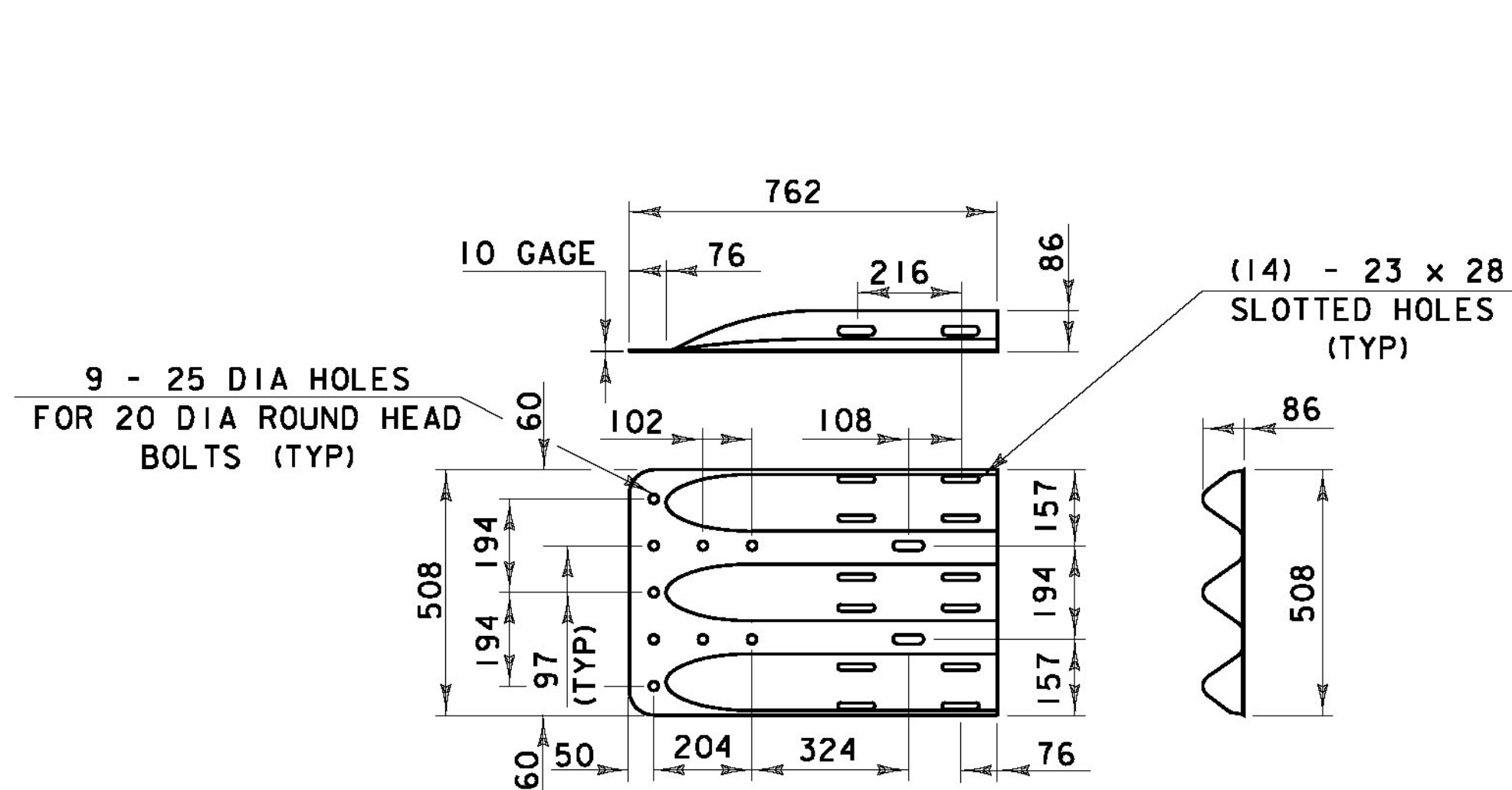


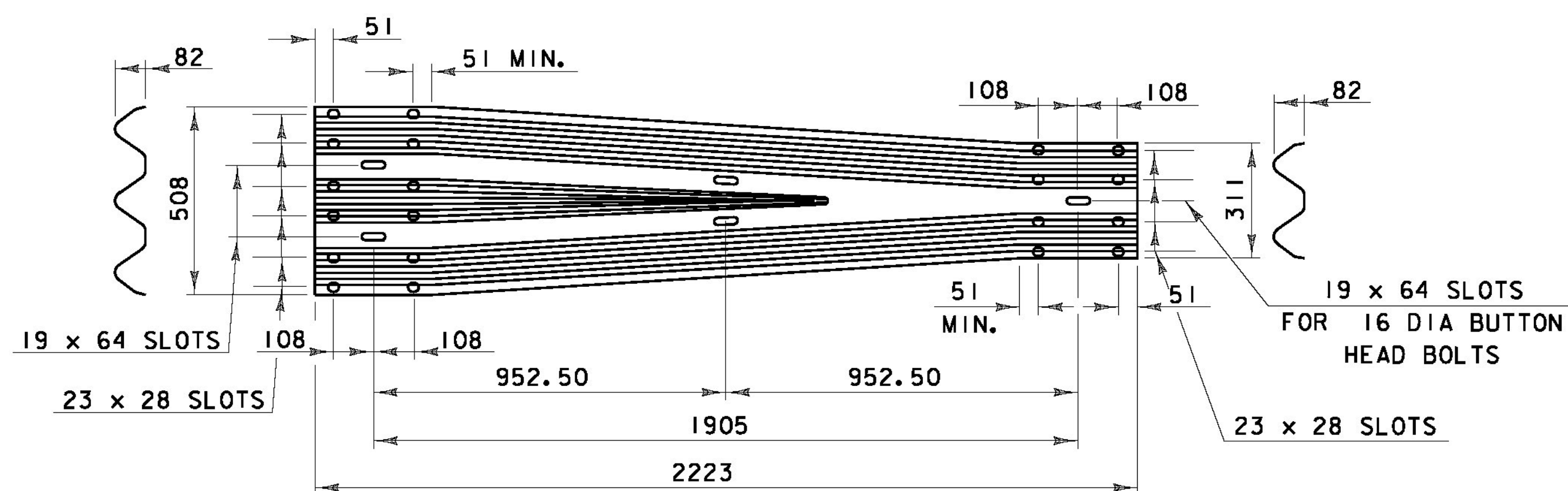
WOOD POST AND THRIE-BEAM RAIL ASSEMBLY

*** CHANGE SLOPE FROM 1 IN 12 AT BRIDGE TO 1 IN 6 PER STANDARD C-10 OVER A DISTANCE OF 3050

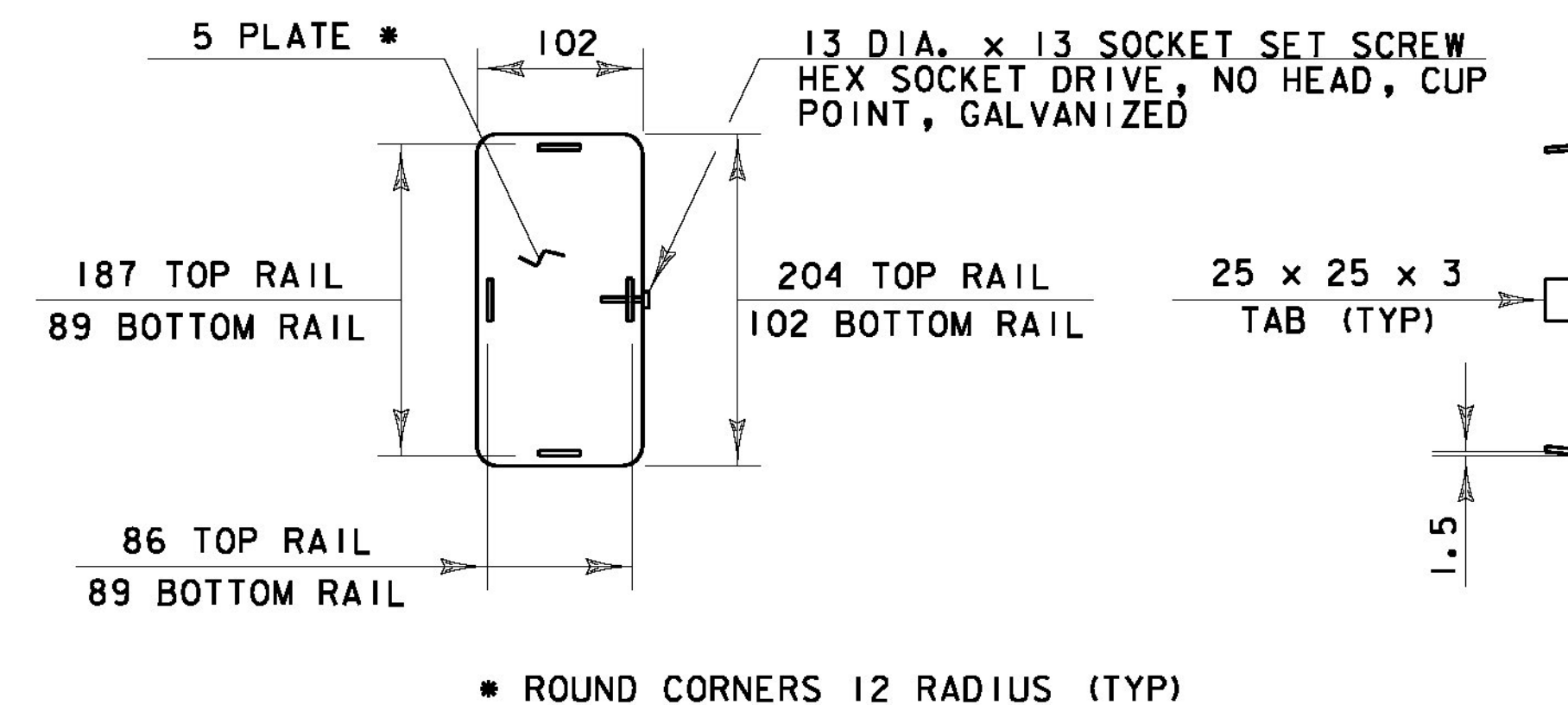


THRIE-BEAM TERMINAL CONNECTOR (HM-TF-13/RE-67)

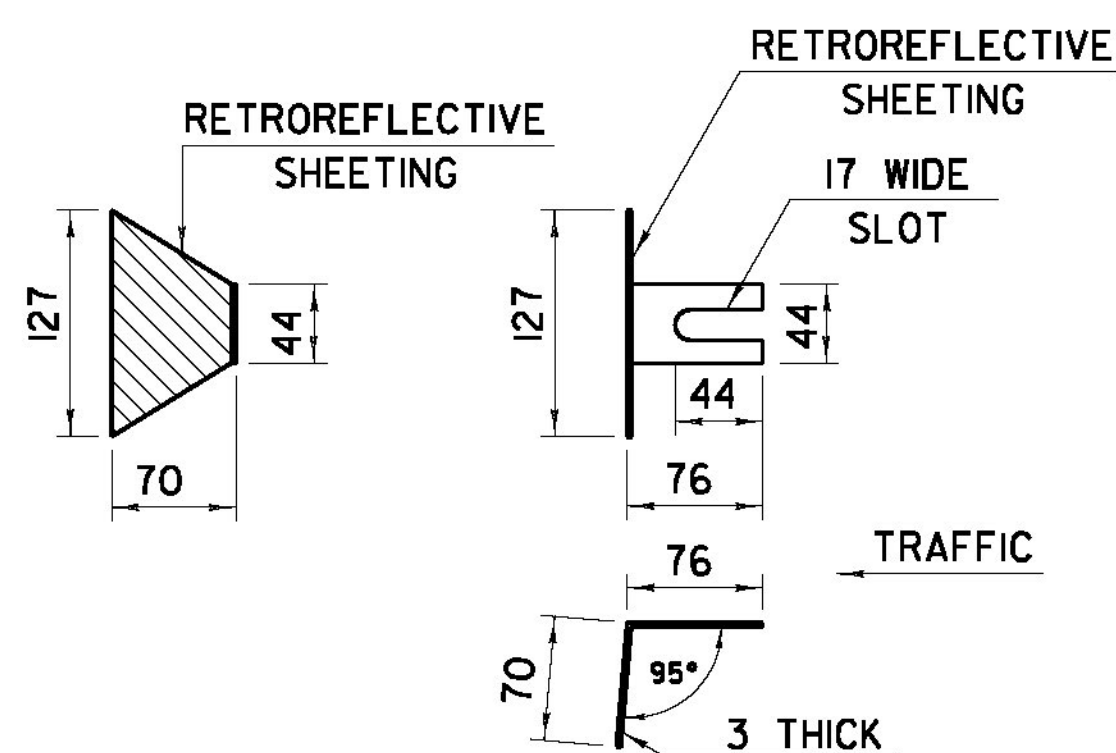
- NOTES**
1. THE RETROREFLECTORIZED ALUMINUM DELINEATION IS TO BE INSTALLED EVERY 9144 (OR CLOSEST POST) WITH A 16 DIAMETER BOLT. DELINEATORS SHALL MEET SEPCIFICATION REQUIREMENTS FOR ASTM B209M ALLOY 5052-H32.
 2. ON BRIDGES WITH A SIDEWALK, DELINEATORS ARE NOT TO BE INSTALLED ON THE SIDEWALK SIDE OF THE BRIDGE.



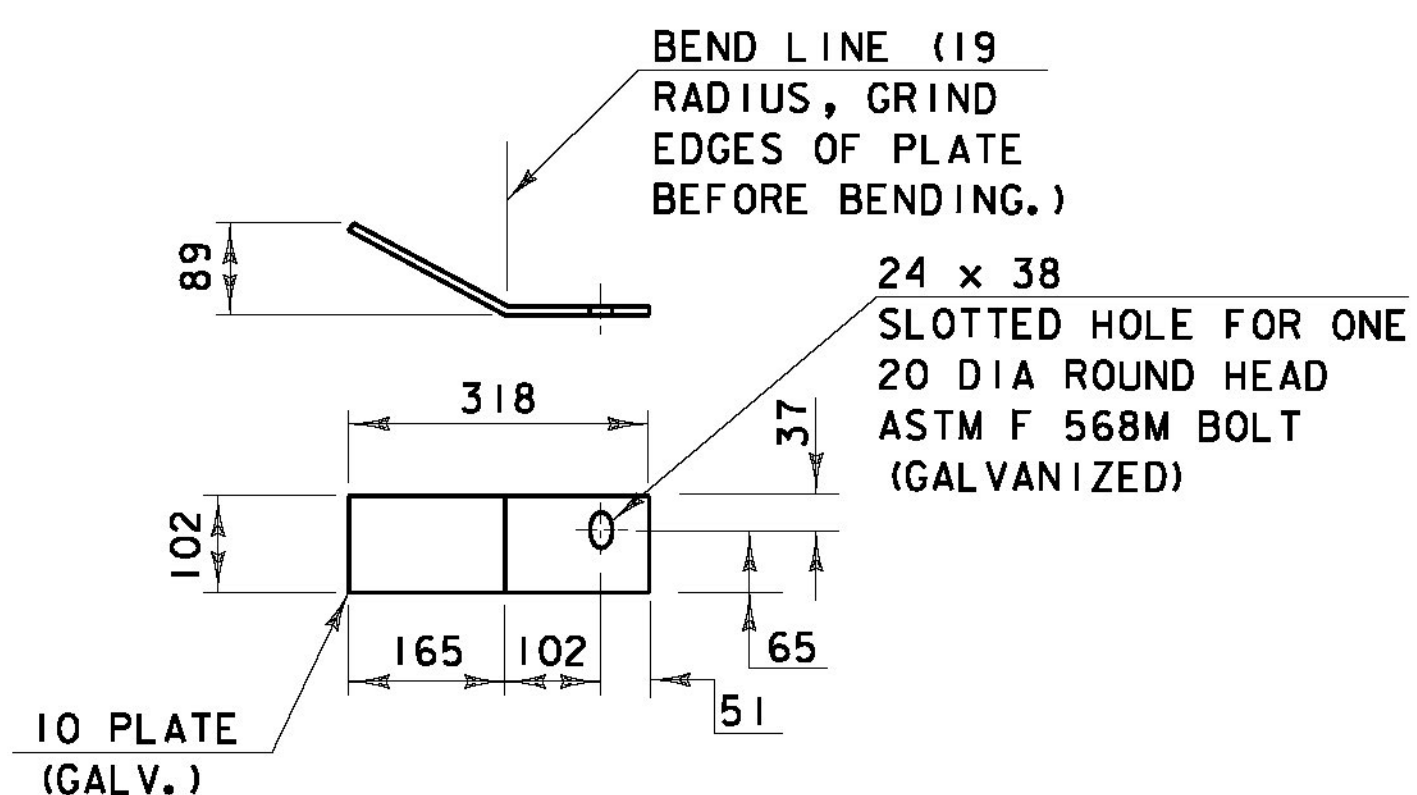
THRIE-BEAM TO STANDARD STEEL BEAM TRANSITION SECTION (HM-TF-13/RE-69)



END CAP DETAIL



DELINEATION DEVICE DETAILS



DEFLECTOR PLATE DETAIL

OTHER STANDARDS REQUIRED: C-10

STATE OF VERMONT AGENCY OF TRANSPORTATION

Town Of	BENNINGTON	Bridge No.	13N
Highway No.		Log Sta.	
		Surv. Sta.	
US ROUTE 7 NB OVER VT ROUTE 279 EB			
DETAILS - NETC 2 RAIL			
Designed By	VTrans	Drawn By	
Checked By	M. CHENETTE	Date	11/09
		Bridge Design Supervisor	G. BOGUE
PROJECT	BENNINGTON	Date	11/09
		PROJECT NO.	NH F019-(154)



3/16/2010 2:05:50 PM v:\953\active\953002\structure\design\17\plot_files\15-51\MB-NETC_details.dwg