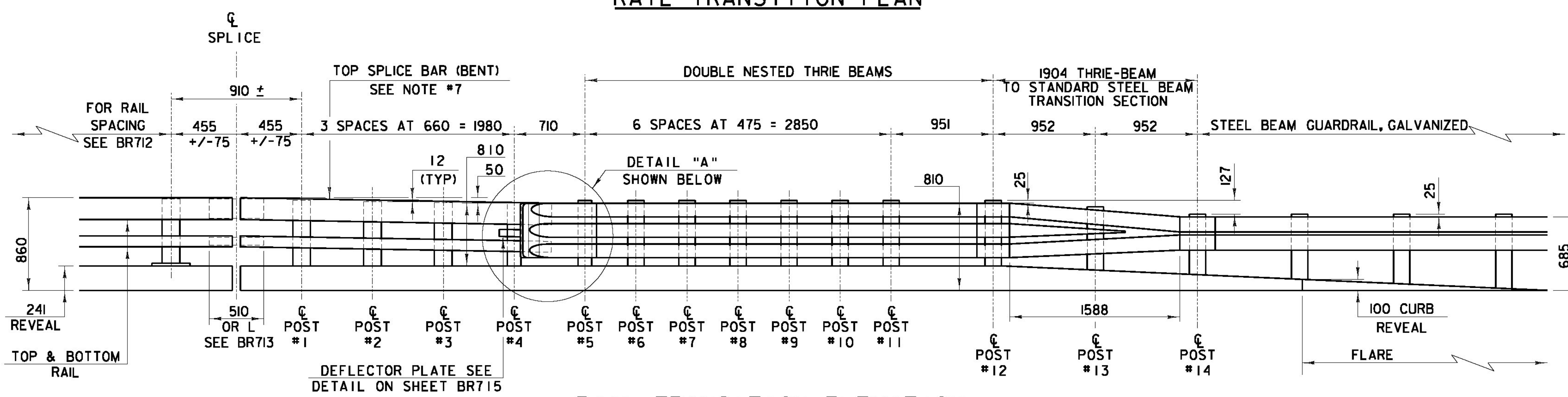


RAIL TRANSITION PLAN

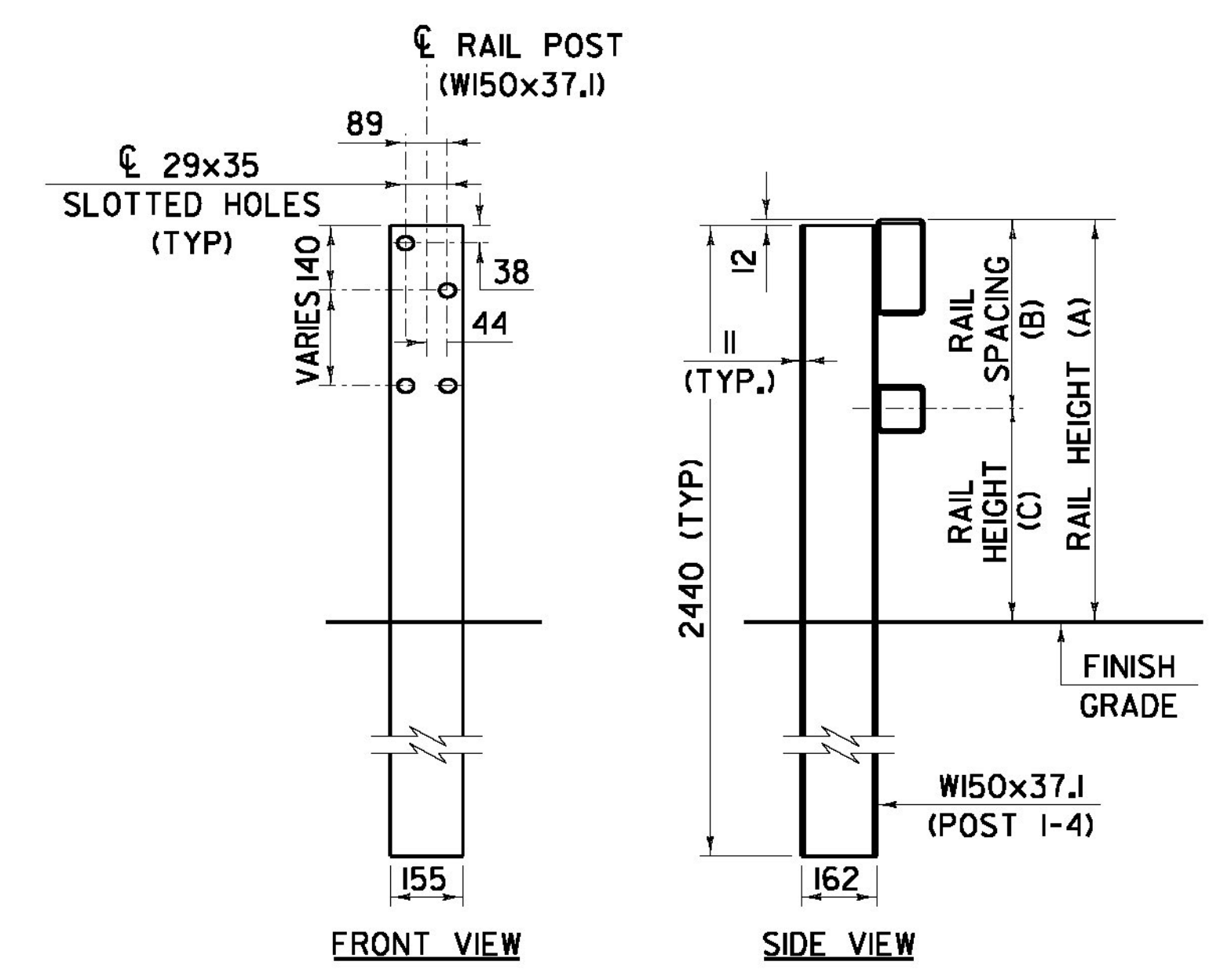


RAIL TRANSITION ELEVATION

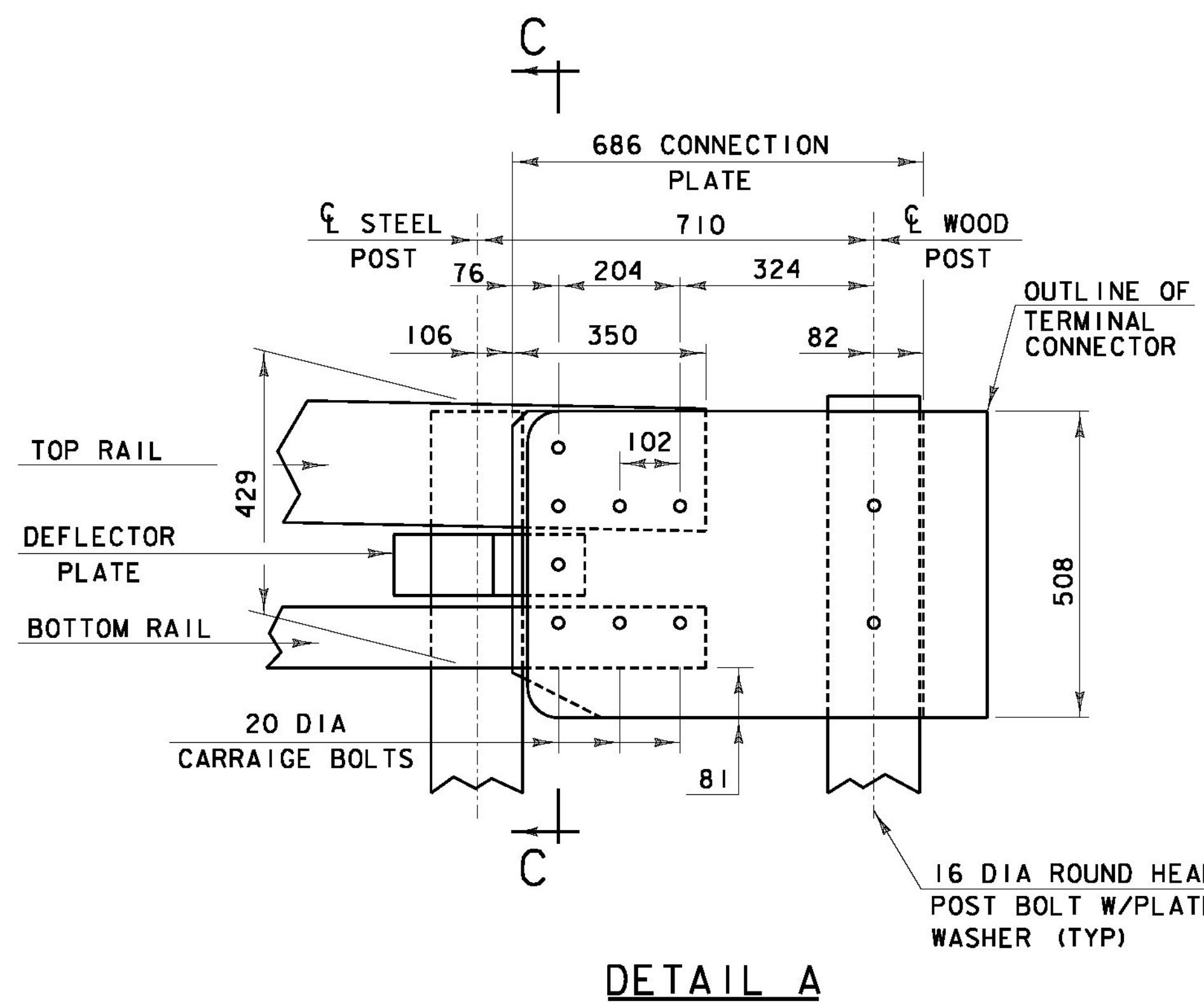
POST NUMBER	RAIL HEIGHT (A)	RAIL SPACING (B)	RAIL HEIGHT (C)
1	850	400	450
2	840	395	445
3	825	385	440
4	810	375	435

NOTES

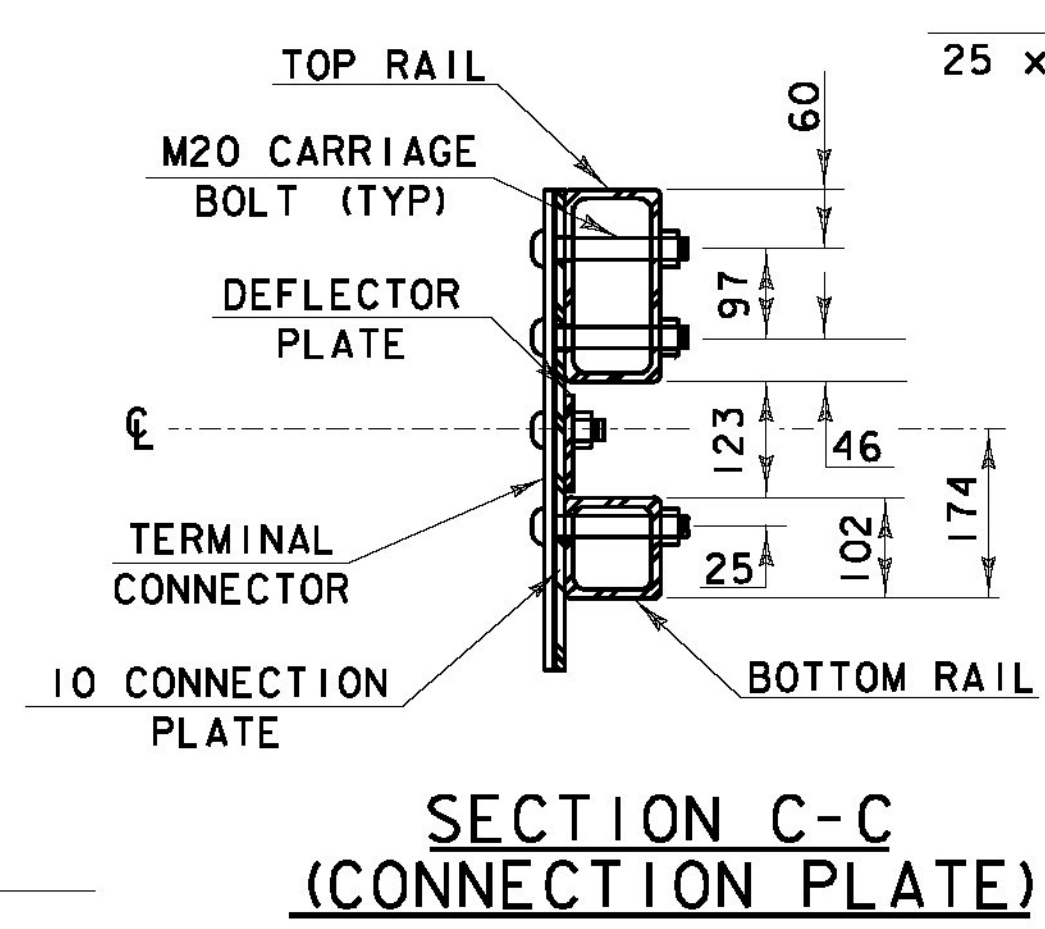
- REFER TO SHEET BR713 FOR ADDITIONAL DETAILS, NOTES AND MATERIAL SPECIFICATIONS.
- PAYMENT FOR GUARDRAIL APPROACH SECTION - GALVANIZED NETC 2 RAIL SHALL INCLUDE THE TERMINAL CONNECTOR, THE CONNECTION PLATE, THE DEFLECTOR PLATE, RAIL, POSTS, BLOCKS AND ATTACHMENT HARDWARE.
- RETROREFLECTIVE MATERIAL SHALL MEET REQUIREMENTS OF SUBSECTION 750.08 AND SHALL BE A 1.6mm ALUMINUM BACKING WHITE OR YELLOW REFLECTOR. YELLOW IS TO BE INSTALLED ON THE DRIVER'S LEFT AND WHITE ON THE DRIVER'S RIGHT.
- ALL APPROACH RAIL SPLICES SHALL BE LAPPED IN THE DIRECTION OF TRAFFIC FLOW.
- TUBE AND STEEL POST MATERIALS, DIMENSION SIZES AND NOTES SHALL BE THE SAME AS THOSE OF THE BRIDGE RAIL, UNLESS OTHERWISE NOTED.
- APPROACH RAIL BOLTS SHALL BE ASTM F 568M CLASS 4.6 AND NUTS SHALL BE AASHTO M291M (GALVANIZED). WASHERS SHALL BE ASTM F844.
- WELD TOP SPLICE BAR TO FIT BEND. USE COMPLETE PENETRATION WELD (B-U2).



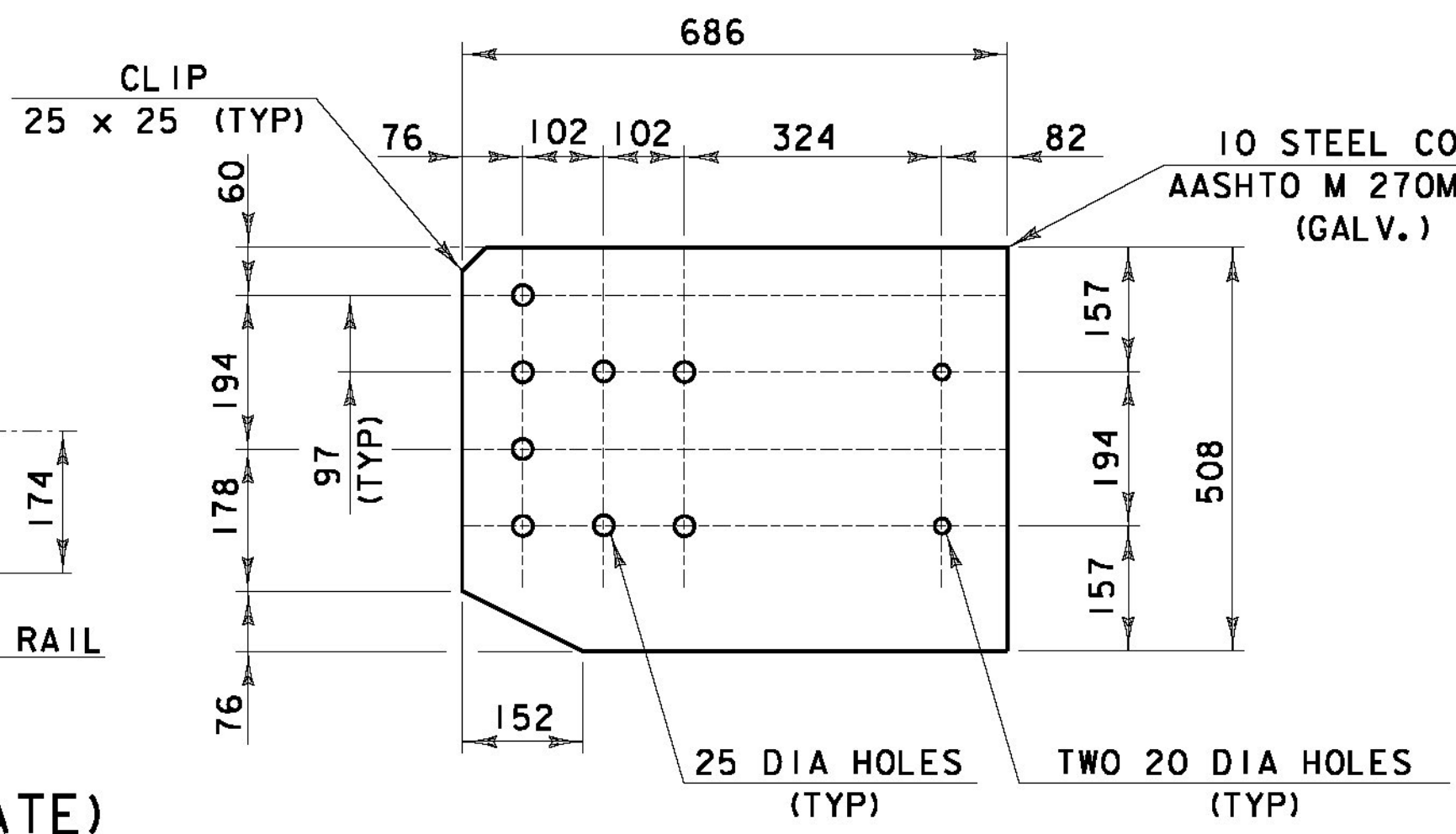
RAIL POST SECTION (POSTS 1-4)



DETAIL A



SECTION C-C (CONNECTION PLATE)



CONNECTION PLATE

STATE OF VERMONT AGENCY OF TRANSPORTATION

Town Of	BENNINGTON	Bridge No.	13N
Highway No.		Log Sta.	
		Surv. Sta.	
US ROUTE 7 NB OVER VT ROUTE 279 EB			
APPROACH RAILING			
Designed By	VTrans	Drawn By	VTrans
Checked By	M. CHENETTE	Date	11/09
		Bridge Design Supervisor	G. BOGUE
		Date	11/09
PROJECT	BENNINGTON	PROJECT NO.	NH F019-(154)
L.G.C. info			
Bridge Sheet No. BR714		Sheet 271 of 468	



3/16/2010 2:05:28 PM v:\953\active\953002\structure\design\br714\figs\NETC_approach.dwg