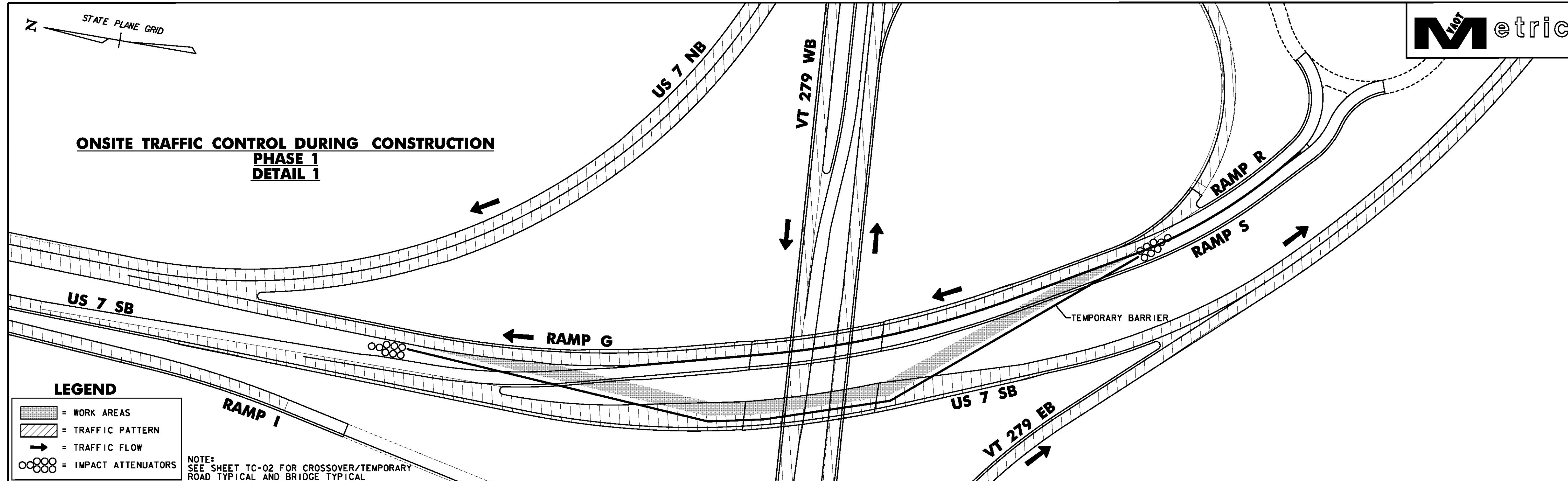


ONSITE TRAFFIC CONTROL DURING CONSTRUCTION
PHASE 1
DETAIL 1



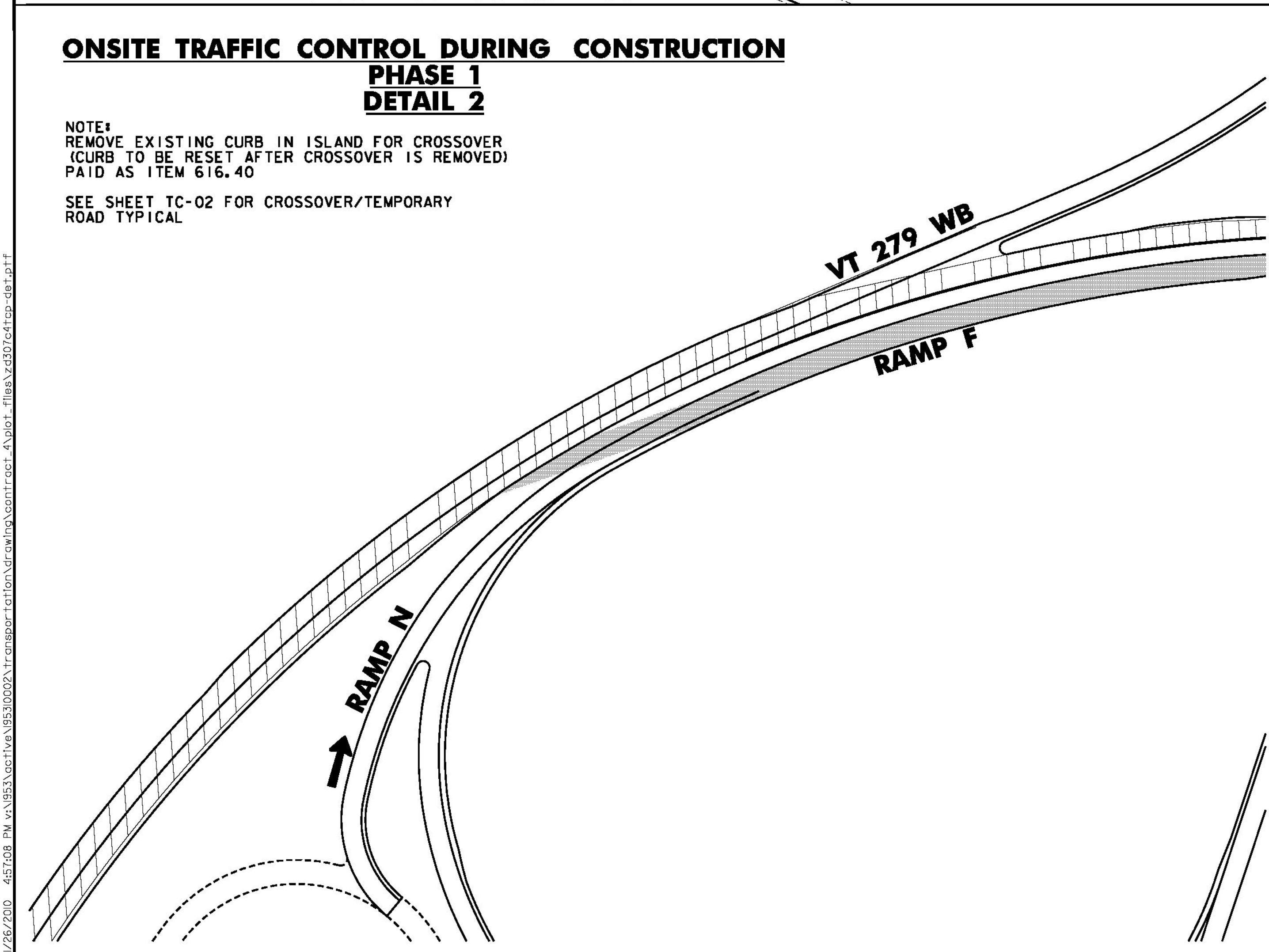
LEGEND

- = WORK AREAS
- = TRAFFIC PATTERN
- = TRAFFIC FLOW
- = IMPACT ATTENUATORS

NOTE:
SEE SHEET TC-02 FOR CROSSOVER/TEMPORARY
ROAD TYPICAL AND BRIDGE TYPICAL

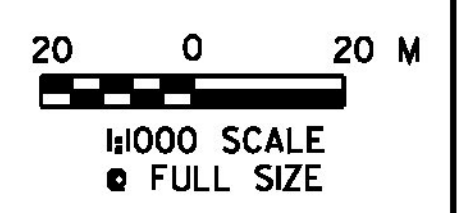
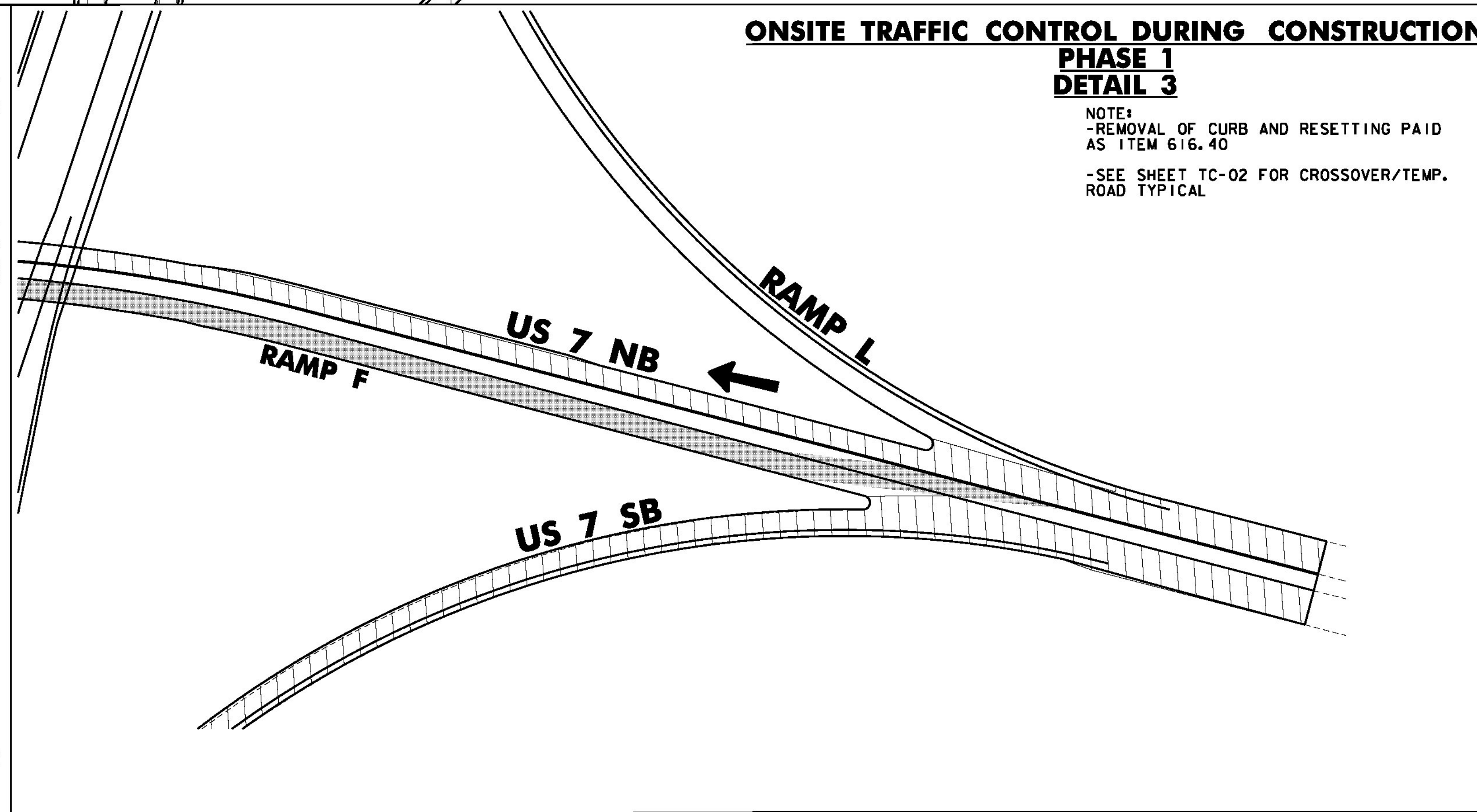
ONSITE TRAFFIC CONTROL DURING CONSTRUCTION
PHASE 1
DETAIL 2

NOTE:
REMOVE EXISTING CURB IN ISLAND FOR CROSSOVER
(CURB TO BE RESET AFTER CROSSOVER IS REMOVED)
PAID AS ITEM 616.40
SEE SHEET TC-02 FOR CROSSOVER/TEMPORARY
ROAD TYPICAL



ONSITE TRAFFIC CONTROL DURING CONSTRUCTION
PHASE 1
DETAIL 3

NOTE:
-REMOVAL OF CURB AND RESETTING PAID
AS ITEM 616.40
-SEE SHEET TC-02 FOR CROSSOVER/TEMP.
ROAD TYPICAL



| | |
|-----------------------------|----------------------------------|
| PROJECT NAME: | BENNINGTON |
| PROJECT NUMBER: | NH 019-1(54) |
| FILE NAME: | ...plot_files\zd307c4tcp-det.ptf |
| DESIGN SUPERVISOR: | GREG EDWARDS |
| DESIGNED BY: | MARC FOISY |
| TRAFFIC CONTROL PLANS TC-04 | |
| PLOT DATE: | 1/26/2010 |
| DRAWN BY: | STANTEC |
| CHECKED BY: | GARY SANTY |
| SHEET | 242 OF 468 |

1/26/2010 4:57:08 PM v:\953\cst11ve\9531002\transportation\drawing\contract\4\plot_files\zd307c4tcp-det.ptf