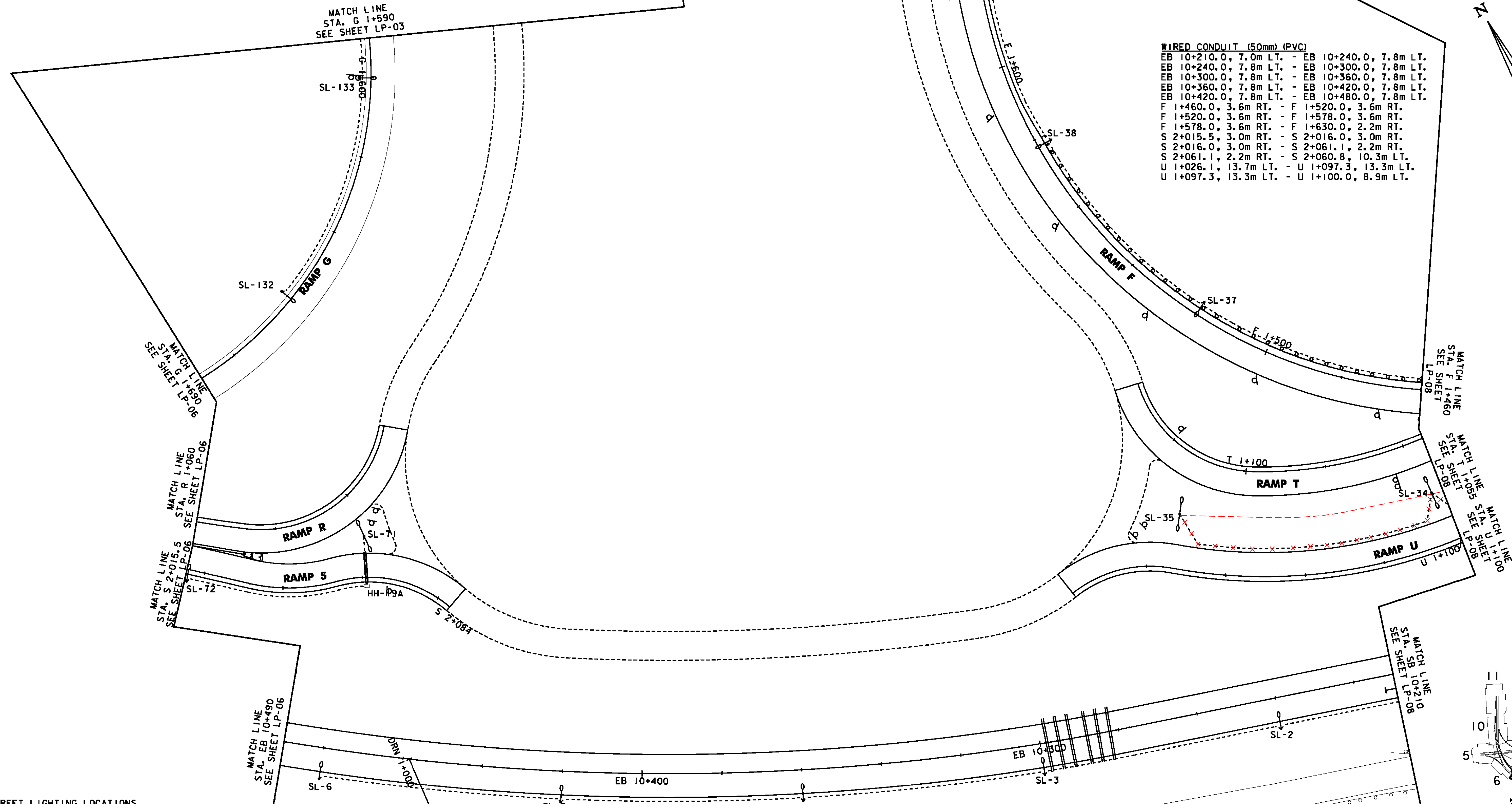
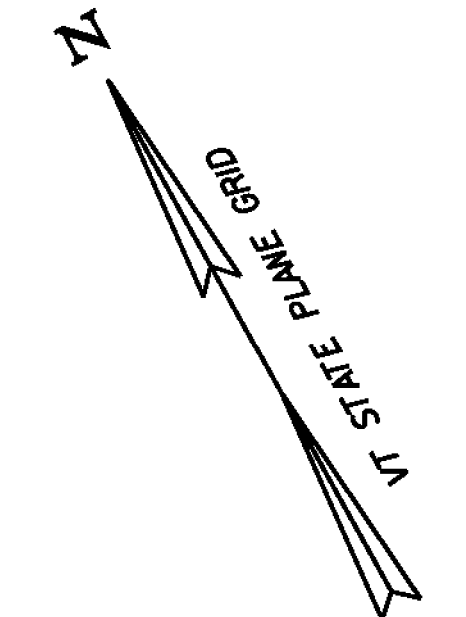


HAND HOLE LOCATIONS

HAND HOLE NO.	LOCATION	TYPE
HH-19A	S 2+061.1, 2.2m RT.	JUNCTION BOX



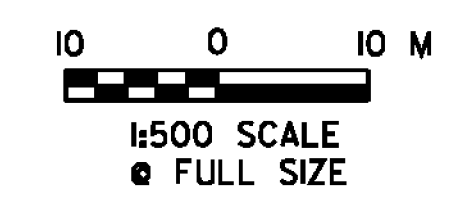
- WIRED CONDUIT (50mm) (PVC)**
- EB 10+210.0, 7.0m LT. - EB 10+240.0, 7.8m LT.
 - EB 10+240.0, 7.8m LT. - EB 10+300.0, 7.8m LT.
 - EB 10+300.0, 7.8m LT. - EB 10+360.0, 7.8m LT.
 - EB 10+360.0, 7.8m LT. - EB 10+420.0, 7.8m LT.
 - EB 10+420.0, 7.8m LT. - EB 10+480.0, 7.8m LT.
 - F 1+460.0, 3.6m RT. - F 1+520.0, 3.6m RT.
 - F 1+520.0, 3.6m RT. - F 1+578.0, 3.6m RT.
 - F 1+578.0, 3.6m RT. - F 1+630.0, 2.2m RT.
 - S 2+015.5, 3.0m RT. - S 2+016.0, 3.0m RT.
 - S 2+016.0, 3.0m RT. - S 2+061.1, 2.2m RT.
 - S 2+061.1, 2.2m RT. - S 2+060.8, 10.3m LT.
 - U 1+026.1, 13.7m LT. - U 1+097.3, 13.3m LT.
 - U 1+097.3, 13.3m LT. - U 1+100.0, 8.9m LT.



STREET LIGHTING LOCATIONS

POLE NO.	LOCATION	BREAK-AWAY BASE	LUMINAIRE			LUMINAIRE MOUNTING HT. TO ROADWAY (M)	TRANSFORMER BASE HT. (M)	ARM RISE (M)	ARM LENGTH (M)	CONCRETE BASE DIAM / DEPTH (mm) / (mm)
			WATTS	DIST. TYPE	VOLTAGE					
SL-2	EB 10+240.0, 7.8m LT.	YES	200	III	240	10.600	0.500	0.762	0.610	610/1828
SL-3	EB 10+300.0, 7.8m LT.	YES	200	III	240	10.600	0.500	0.762	0.610	610/1828
SL-4	EB 10+360.0, 7.8m LT.	YES	200	III	240	10.600	0.500	0.762	0.610	610/1828
SL-5	EB 10+420.0, 7.8m LT.	YES	200	III	240	10.600	0.500	0.762	0.610	610/1828
SL-6	EB 10+480.0, 7.8m LT.	YES	200	III	240	10.600	0.500	0.762	0.610	610/1828
SL-34	U 1+097.3, 13.3m LT.	YES	200	III	240	10.600	0.500	0.762	2.440	610/1828
SL-35	U 1+026.1, 13.7m LT.	YES	200	III	240	10.600	0.500	0.762	2.440	610/1828
SL-37	F 1+520.0, 3.6m RT.	NO	200	III	240	10.600	0.500	0.762	0.610	610/1828
SL-38	F 1+578.0, 3.6m RT.	NO	200	III	240	10.600	0.500	0.762	0.610	610/1828
SL-71	S 2+060.8, 10.3m LT.	YES	200	III	240	10.600	0.500	0.762	3.000	610/1828
SL-72	S 2+016.0, 3.0m RT.	YES	200	III	240	10.600	0.500	0.762	0.610	610/1828
SL-132	G 1+660.0, 3.0m RT.	YES	200	III	240	10.600	0.500	0.762	0.610	610/1828
SL-133	G 1+600.0, 3.0m RT.	YES	200	III	240	10.600	0.500	0.762	0.610	610/1828

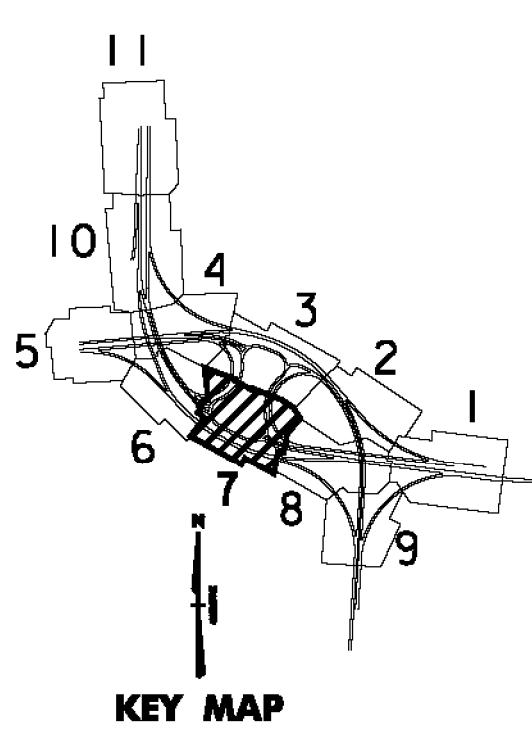
ELECTRICAL CONDUIT SLEEVE (200mm) (PVC) (SCH 80)
S 2+061.1, 1.5m RT. - S 2+060.8, 6.3m LT.



PROJECT NAME: BENNINGTON
PROJECT NUMBER: NH 019-(K54)

FILE NAME: ...z307c4lgt.plans.ptf
DESIGN SUPERVISOR: GREG EDWARDS
DESIGNED BY: MAEGAN CROWLEY
LIGHTING PLANS LP-07

PLOT DATE: 1/26/2010
DRAWN BY: STANTEC
CHECKED BY: GARY SANTY
SHEET 230 OF 468



1/26/2010 4:52:31 PM V:\953\live\19530002\transportation\dwg\com\tr\cop\4\p101 - Files\26507\rd\lgt - plns.p11