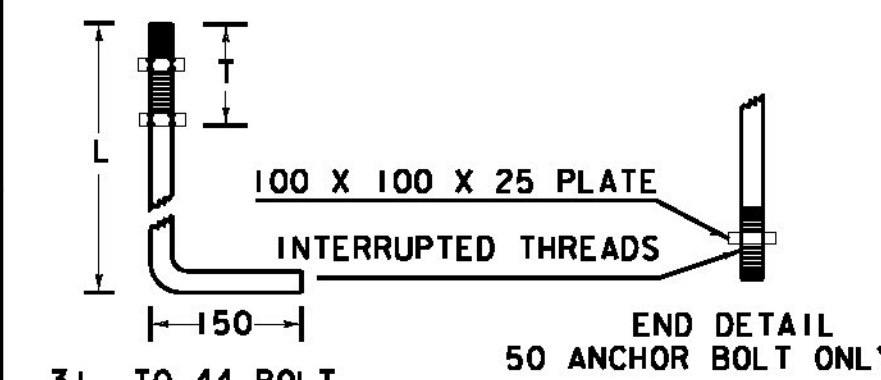
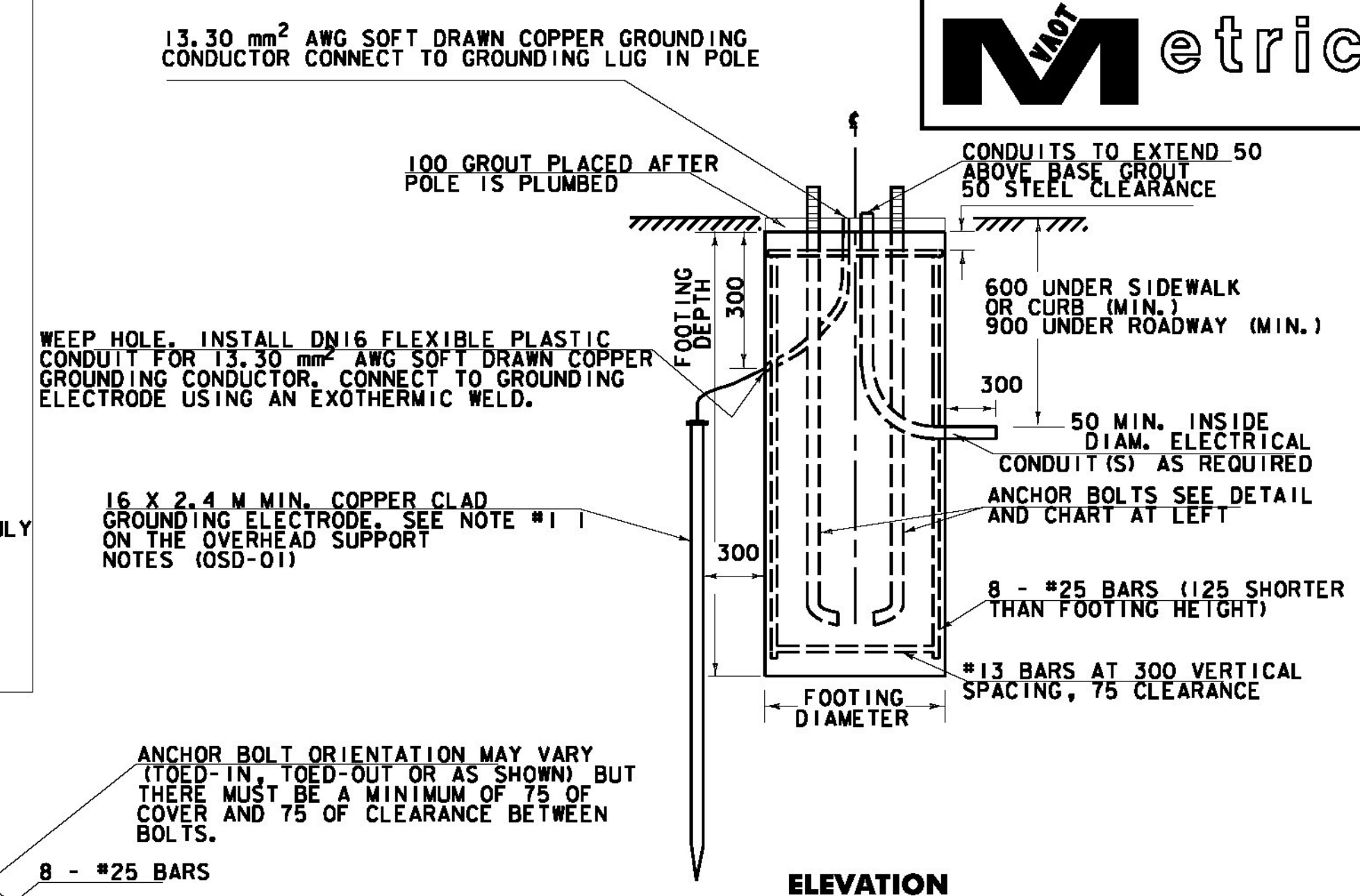


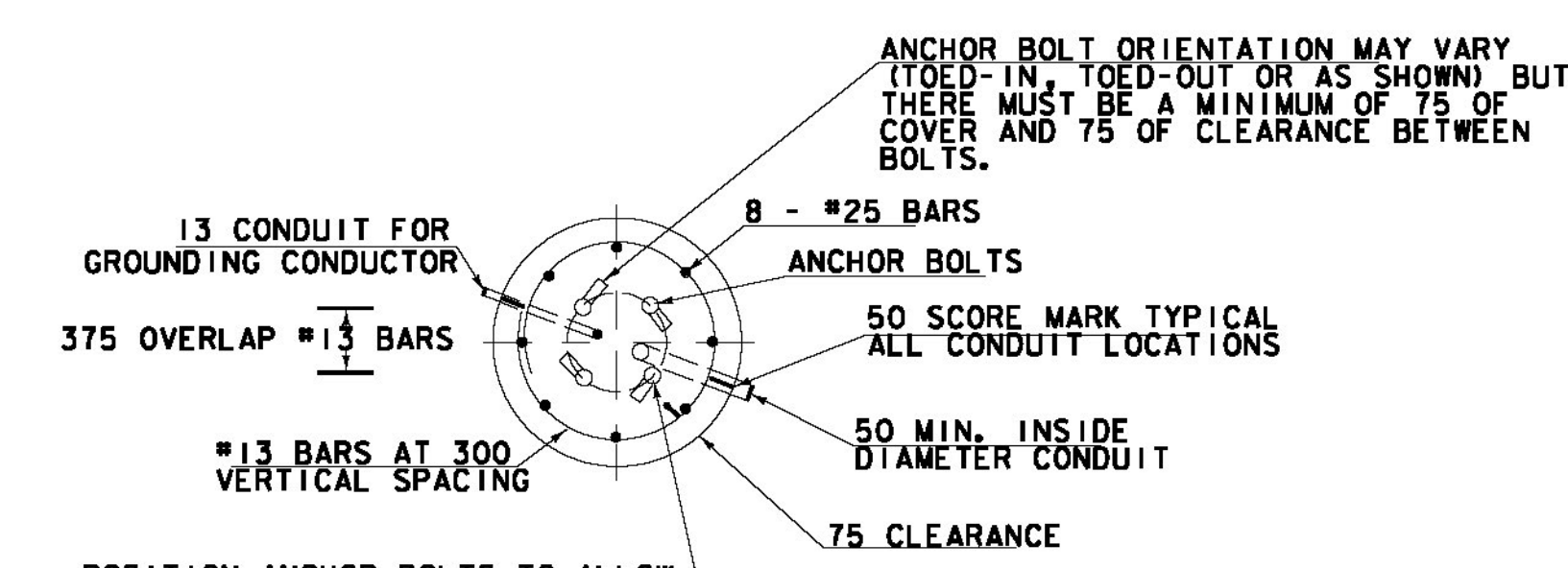
| ANCHOR BOLT DETAIL | | |
|--------------------|------|-----|
| SIZE | L | T |
| 31 X 1220 | 1068 | 203 |
| 38 X 1525 | 1373 | 229 |
| 44 X 2268 | 2135 | 229 |
| 51 X 2440 | 2440 | 229 |



ANCHOR BOLT DETAIL



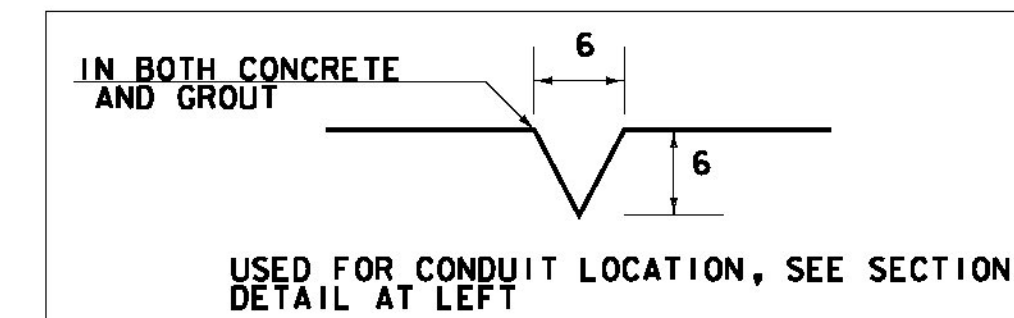
ELEVATION



SECTION

OVERHEAD TRAFFIC SIGN BRIDGE FOOTING DETAIL

(SPREAD FOOTINGS OR PILES ARE OPTIONAL)

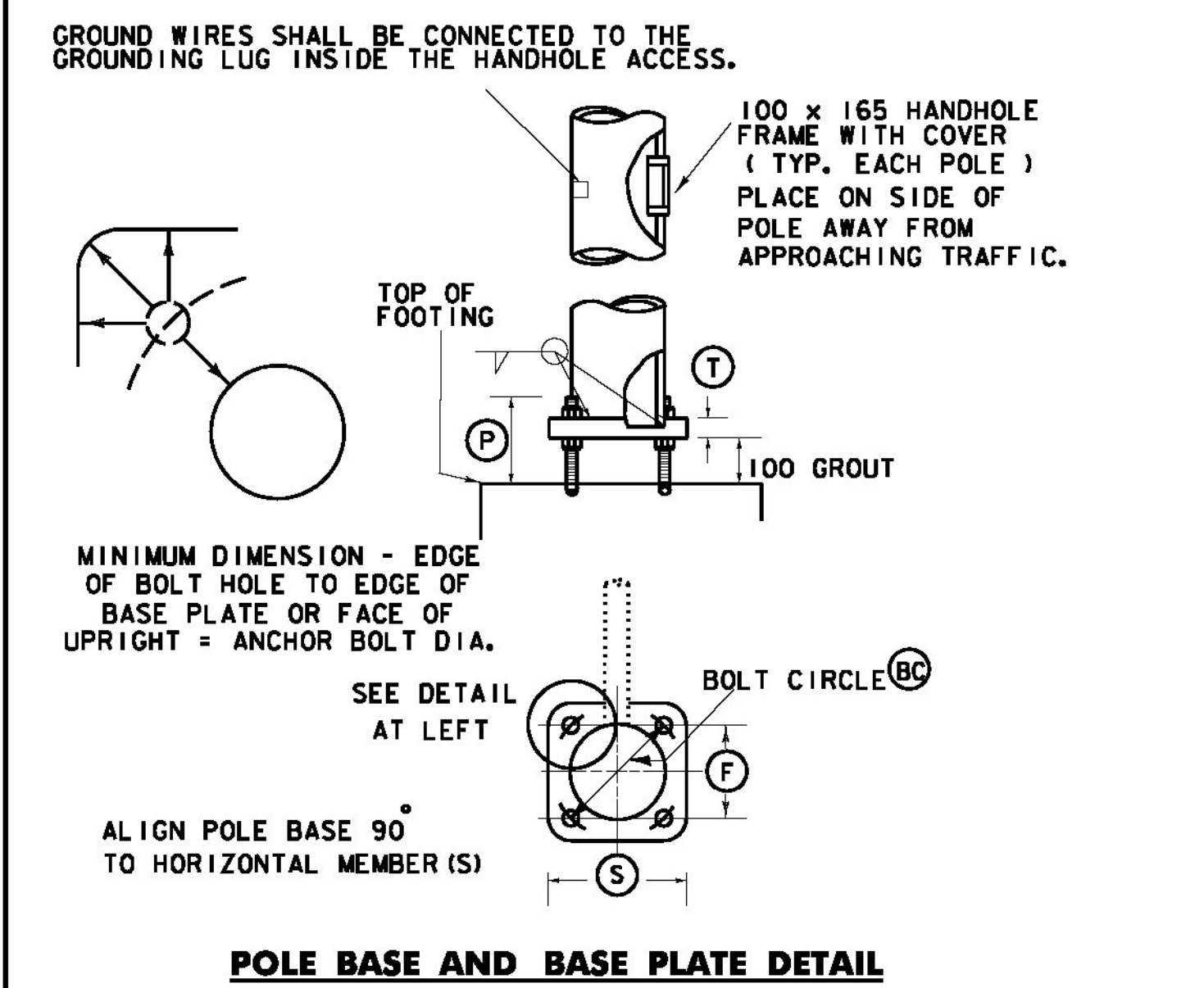


50 SCORE MARK DETAIL

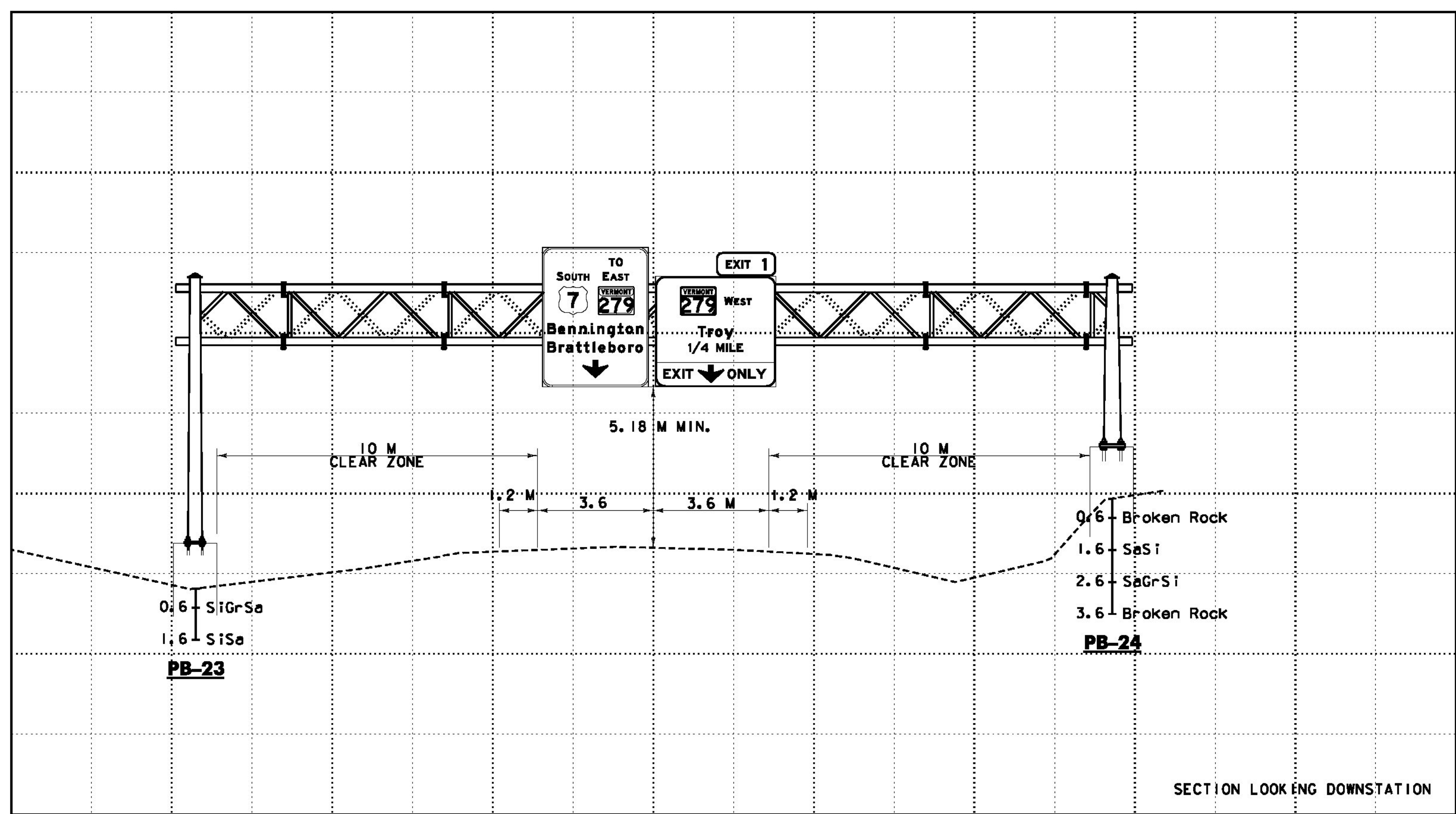
NOTES:

- SEE SHEET OVERHEAD SUPPORT NOTES OSD-01 FOR ADDITIONAL INFORMATION
- MANUFACTURER TO DETERMINE TYPE OF STRUCTURE REQUIRED.
- MONOTUBES SHALL NOT BE USED FOR SIGNS OVER 3.05 M IN HEIGHT.
- MINIMUM CLEARANCE FROM SIGNS TO ROADWAY IS 5.18 M.
- ALL DIMENSIONS IN MILLIMETERS (MM) EXCEPT WHERE NOTED.
- SIGNS SHALL BE MOUNTED SUCH THAT THE ARROW IS PLACED ABOVE THE CENTER OF THE LANE. SEE TSD-03 FOR SIGN DIMENSIONS.
- MAXIMUM EXPOSURE OF FOOTING ABOVE FINISH EXISTING GROUND SHALL BE 100mm

| BASE PLATE / BOLT DATA | | | | | ANCHOR BOLT SIZE |
|------------------------|---|---|---|---|------------------|
| EC | F | S | T | P | |
| | | | | | |



POLE BASE AND BASE PLATE DETAIL



OVERHEAD SIGN BRIDGE CROSS SECTION @ U.S. 7 MM 5.80
(SEE SHEET SP-14 FOR LOCATION PLAN)
NOT TO SCALE

SECTION LOOKING DOWNSTATION



| | |
|---------------------------------|------------------------------------|
| PROJECT NAME: | BENNINGTON |
| PROJECT NUMBER: | NH 019-1(54) |
| FILE NAME: | ...\\plot_files\zd307c4det.osd.ptf |
| DESIGN SUPERVISOR: | GREG EDWARDS |
| DESIGNED BY: | MARC FOISY |
| OVERHEAD SUPPORT DETAILS OSD-12 | |
| PLOT DATE: | 1/26/2010 |
| DRAWN BY: | STANTEC |
| CHECKED BY: | GARY SANTY |
| SHEET | 223 OF 468 |

1/26/2010 4:52:19 PM V:\953\active\1951002\transportation\groming\scott\tracet_4\blot_files\zd307c4det.osd.ptf