

MILLED RUMBLE STRIPS
 STA. NB 11+140.0, RT. - STA. NB 11+254.6, RT.
 STA. NB 11+140.0, LT. - STA. NB 11+254.6, LT.
 STA. SB 11+290.0, RT. - STA. SB 11+488.9, RT.

DURABLE 150 WHITE LINE, RECESSED POLYUREA
 STA. 11+000.0 TO STA. 11+200.0, SOLID C
 STA. NB 11+140.0 TO STA. NB 11+254.6, SOLID RT.
 STA. NB 11+140.0 TO STA. NB 11+254.6, DOTTED LT.
 STA. NB 11+140.0 TO STA. NB 11+254.6, DASHED C
 STA. SB 11+487.3 TO STA. SB 11+488.9, SOLID LT.

DURABLE 150 YELLOW LINE, RECESSED POLYUREA
 STA. NB 11+140.0 TO STA. NB 11+254.6, SOLID LT.
 STA. SB 11+290.0 TO STA. SB 11+488.9, SOLID RT.

DURABLE 300 WHITE LINE, RECESSED POLYUREA
 STA. SB 11+290.0 TO STA. SB 11+487.3, C & LT. (GORE)
 STA. SB 11+487.3 TO STA. SB 12+260.0, DOTTED C

DURABLE 300 WHITE LINE, THERMOPLASTIC
 STA. SB 11+290.0 TO STA. SB 11+460.8, LT. (CHEVRONS)

OVERHEAD SIGN ASSEMBLY - MULTI-SUPPORT
 STA. SB 11+455.2

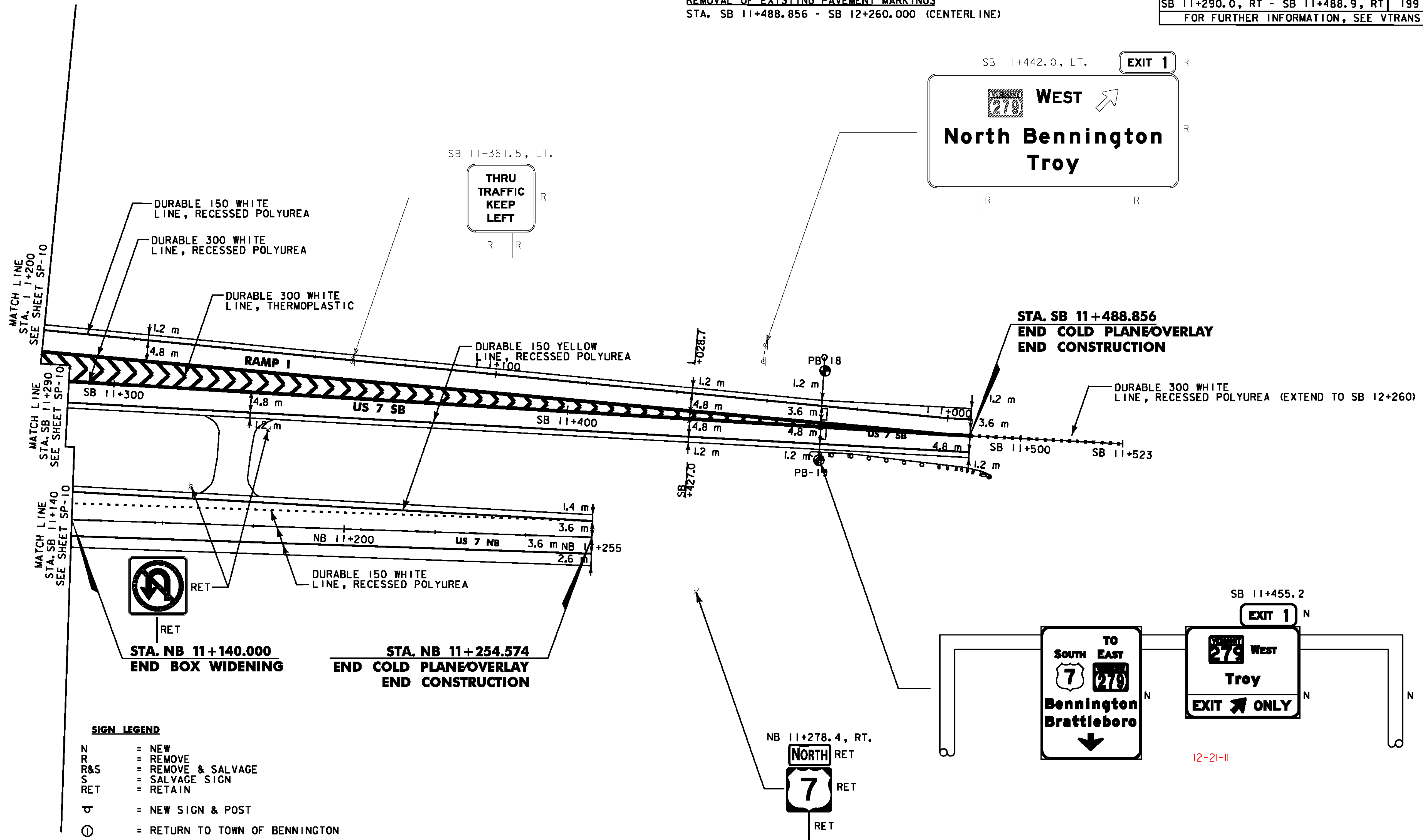
REMOVAL OF EXISTING PAVEMENT MARKINGS
 STA. SB 11+488.856 - SB 12+260.000 (CENTERLINE)

REMOVING SIGNS
 AS SHOWN - 3

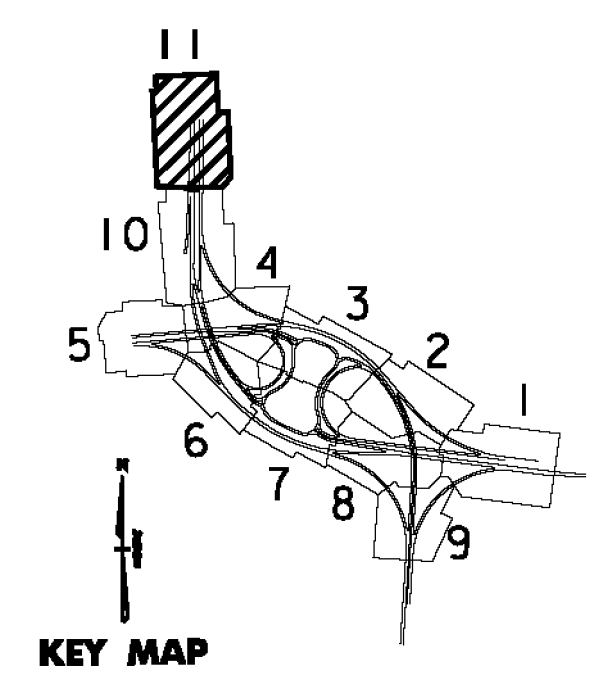
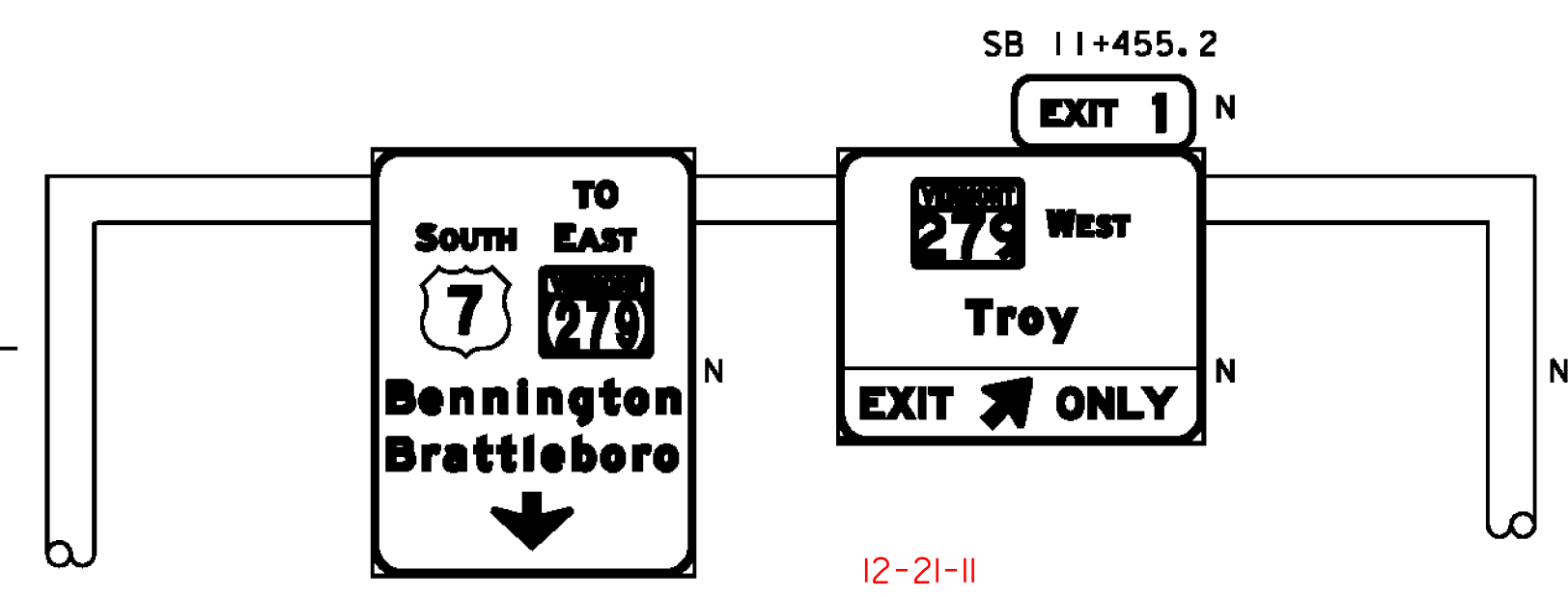
DELINEATOR WITH STEEL POST

ROADWAY	LENGTH (m)	SPACING (m)	COLOR	TYPE
RAMP 1				
1 1+000.0, RT - 1 1+200.0, RT	203	30.5	WHITE	11
US 7 NB				
NB 11+140.0, LT - NB 11+254.5, LT	115	30.5	YELLOW	11
NB 11+140.0, RT - NB 11+254.5, RT	115	30.5	WHITE	1
US 7 SB				
SB 11+290.0, RT - SB 11+488.9, RT	199	80.5	YELLOW	1

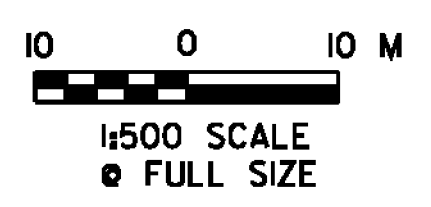
FOR FURTHER INFORMATION, SEE VTRANS STANDARD E-197



- SIGN LEGEND**
- N = NEW
 - R = REMOVE
 - R&S = REMOVE & SALVAGE
 - S = SALVAGE SIGN
 - RET = RETAIN
 - ⊕ = NEW SIGN & POST
 - ⊙ = RETURN TO TOWN OF BENNINGTON
 - * = SIGN NOT REQUIRED FOR INTERIM OPENING
 - ** = SIGN REQUIRES MODIFICATION TO BE USED BETWEEN INTERIM AND FULL OPENING



SEE REVISED SHEET NOTE: ALL DIMENSIONS IN MILLIMETERS (mm) EXCEPT WHERE NOTED



PROJECT NAME: BENNINGTON
 PROJECT NUMBER: NH 019-(K54)
 FILE NAME: ...zd307c4sgnpvm-plans.prf PLOT DATE: 1/26/2010
 DESIGN SUPERVISOR: GREG EDWARDS DRAWN BY: STANTEC
 DESIGNED BY: MARC FOISY CHECKED BY: GARY SANTY
 SIGNS AND MARKINGS SP-11 SHEET 183 OF 468

1/26/2010 4:50:47 PM v:\1953\get\live\1953\0002\tr\anspor\ref\ion\dr\aw\ng\com\tr\cst_4\p\ot_...files\z6507\c4sgnpvm-plans.prf