

DELINEATOR WITH STEEL POST

ROADWAY	LENGTH (m)	SPACING (m)	COLOR	TYPE
RAMP G				
G 2+045.0, LT - /G 2+153.0, LT	109	30.5	YELLOW	I
G 2+153.7, RT - G 2+236.8, RT	83	30.5	WHITE	I
G 2+236.8, LT - SB 11+140.0, RT	185	30.5	YELLOW	II
RAMP I				
I 1+200.0, RT - I 1+207.7, RT	8	30.5	WHITE	II
I 1+207.7, RT - I 1+299.5, RT	92	30.5	WHITE	I
I 1+299.5, LT - I 1+400.3, LT	101	30.5	YELLOW	I
RAMP S				
SB 11+217.7, LT - S 1+104.9, LT	240	30.5	YELLOW	II
S 1+104.9, RT - S 1+140.0, RT	35	25.9	WHITE	I
S 1+140.0, RT - S 1+165.0, RT	15	30.5	WHITE	I
US 7 NB				
NB 10+770.0, RT - SB 11+140.0, RT	370	80.5	WHITE	I
NB 10+770.0, LT - NB 10+956.8, LT	187	80.5	YELLOW	I
US 7 SB				
SB 10+910.0, RT - SB 10+975.2, RT	65	80.5	YELLOW	I
SB 10+910.0, LT - SB 11+275.5, LT	366	80.5	WHITE	I
SB 11+217.7, RT - SB 11+290.0, RT	72	80.5	YELLOW	I

DURABLE 150 WHITE LINE, RECESSED POLYUREA
 STA. G 2+045.0 TO STA. G 2+236.8, SOLID C
 STA. I 1+200.0 TO STA. I 1+433.3, SOLID C
 STA. S 1+104.9 TO STA. S 1+167.3, SOLID C
 STA. NB 10+770.0 TO STA. NB 11+140.0, SOLID RT.
 STA. NB 10+770.0 TO STA. NB 11+140.0, DASHED C
 STA. NB 11+025.3 TO STA. NB 11+140.0, DOTTED LT.
 STA. SB 10+910.0 TO STA. SB 11+275.8, SOLID C
 STA. SB 11+080.5 TO STA. SB 11+217.7, DOTTED RT.

DURABLE 150 YELLOW LINE, RECESSED POLYUREA
 STA. G 2+045.0 LT. TO STA. G 2+303.1, SOLID LT.
 STA. I 1+207.7 TO STA. I 1+433.3, SOLID LT.
 STA. S 1+000.0 TO STA. S 1+167.3, SOLID LT.
 STA. NB 10+770.0 TO STA. NB 10+956.8, SOLID LT.
 STA. NB 11+025.3 TO STA. NB 11+140.0, SOLID LT.
 STA. SB 10+910.0 TO STA. SB 10+975.3, SOLID RT.
 STA. SB 11+080.5 TO STA. SB 11+290.0, SOLID RT.

DURABLE 300 WHITE LINE, RECESSED POLYUREA
 STA. NB 10+956.8 TO STA. NB 11+025.3, LT. (GORE)
 STA. SB 10+975.3 TO STA. SB 11+080.5, RT. (GORE)
 STA. SB 11+275.1 TO STA. SB 11+290.0, C & LT. (GORE)

DURABLE 300 WHITE LINE, THERMOPLASTIC
 STA. SB 10+975.3 TO STA. SB 11+080.5, RT. (CHEVRONS)
 STA. SB 11+275.3 TO STA. SB 11+290.0, LT. (CHEVRONS)

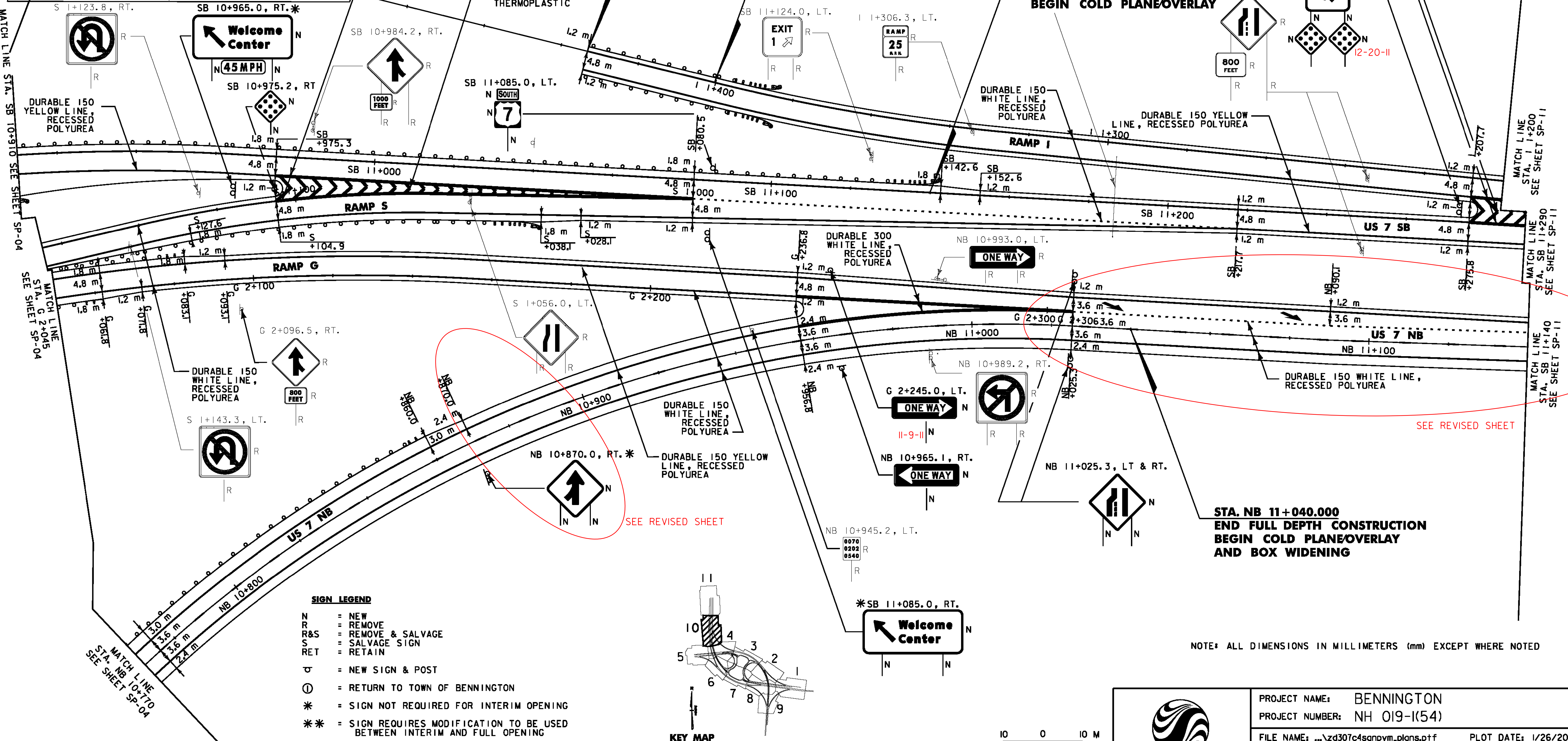
REMOVING SIGNS
 AS SHOWN - 17

DELINEATOR WITH STEEL POST
 FOR MORE INFORMATION, SEE SHEET MD-02

SPECIAL PROVISION (REMOVE EXISTING OVERHEAD SIGN ASSEMBLY - MULTI-SUPPORT)
 STA. SB 11+185.5

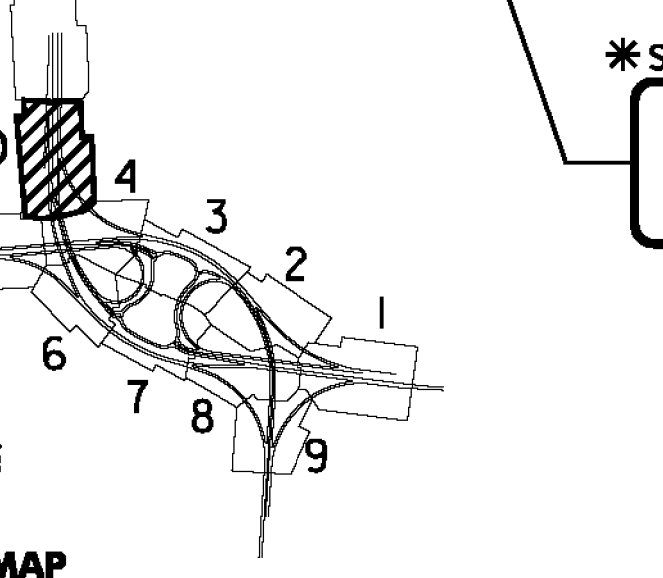
MILLED RUMBLE STRIPS
 STA. NB 10+770.0, RT. - STA. NB 11+140.0, RT.
 STA. NB 10+770.0, LT. - STA. NB 10+956.8, LT.
 STA. NB 11+025.0, LT. - STA. NB 11+140.0, LT.
 STA. SB 10+910.0, RT. - STA. SB 10+975.0, RT.
 STA. SB 10+910.0, LT. - STA. SB 11+275.0, LT.
 STA. SB 11+080.0, RT. - STA. SB 11+290.0, RT.

DURABLE LETTER OR SYMBOL, THERMOPLASTIC
 STA. NB 11+035.0, LT - " " " "
 STA. NB 11+080.0, LT - " " " "



SIGN LEGEND

- N = NEW
- R = REMOVE
- R&S = REMOVE & SALVAGE
- S = SALVAGE SIGN
- RET = RETAIN
- ⊕ = NEW SIGN & POST
- ⊙ = RETURN TO TOWN OF BENNINGTON
- * = SIGN NOT REQUIRED FOR INTERIM OPENING
- ** = SIGN REQUIRES MODIFICATION TO BE USED BETWEEN INTERIM AND FULL OPENING



PROJECT NAME: BENNINGTON
PROJECT NUMBER: NH 019-1(54)

FILE NAME: ...zd307c4sgnvm-plans.pfl
DESIGN SUPERVISOR: GREG EDWARDS
DESIGNED BY: MARC FOISY
SIGNS AND MARKINGS SP-10

PLOT DATE: 1/26/2010
DRAWN BY: STANTEC
CHECKED BY: GARY SANTY
SHEET 182 OF 468

1/26/2010 4:50:44 PM v:\1953\active\19530002\tr\anspor\ref\ion\dr\aw\ng\com\tr\cst_4\p\ot_...files\z6507\c4sgnvm-plans.pfl