

MILLED RUMBLE STRIPS

STA. NB 9+640.4, RT. - STA. NB 9+790.0, RT.
 STA. SB 9+520.0, LT. - STA. SB 9+970.0, LT.
 STA. SB 9+829.5, RT. - STA. SB 9+970.0, RT.

DURABLE 150 WHITE LINE, RECESSED POLYUREA

STA. L 1+000.0 TO STA. L 1+280.0, SOLID C
 STA. NB 9+520.0 TO STA. NB 9+580.5, SOLID LT.
 STA. NB 9+653.9 TO STA. NB 9+790.0, SOLID LT.
 STA. NB 9+640.4 TO STA. NB 9+790.0, SOLID RT.
 STA. NB 9+520.0 TO STA. NB 9+566.8, SOLID RT.
 STA. NB 9+520.0 TO STA. NB 9+550.5, DASHED LT.
 STA. SB 9+747.1 TO STA. SB 9+970.0, SOLID C

DURABLE 150 YELLOW LINE, RECESSED POLYUREA

STA. L 1+072.5 TO STA. L 1+280.0, SOLID LT.
 STA. NB 9+520.0 TO STA. NB 9+790.0, SOLID LT. & C
 STA. SB 9+829.5 TO STA. SB 9+970.0, SOLID RT.

DURABLE 300 WHITE LINE, RECESSED POLYUREA

STA. NB 9+520.0 TO STA. NB 9+593.9, SOLID RT
 STA. NB 9+593.9 TO STA. NB 9+640.4, RT. (GORE)
 STA. NB 9+550.5 TO STA. NB 9+580.5, SOLID LT.
 STA. SB 9+747.1 TO STA. SB 9+829.5, RT. (GORE)

DURABLE 300 WHITE LINE, THERMOPLASTIC

STA. NB 9+594.1 TO STA. NB 9+640.4, RT. (CHEVRONS)

REMOVING SIGNS

AS SHOWN - 3

OVERHEAD SIGN ASSEMBLY - MULTI-SUPPORT

STA. NB 9+565.0, RT.

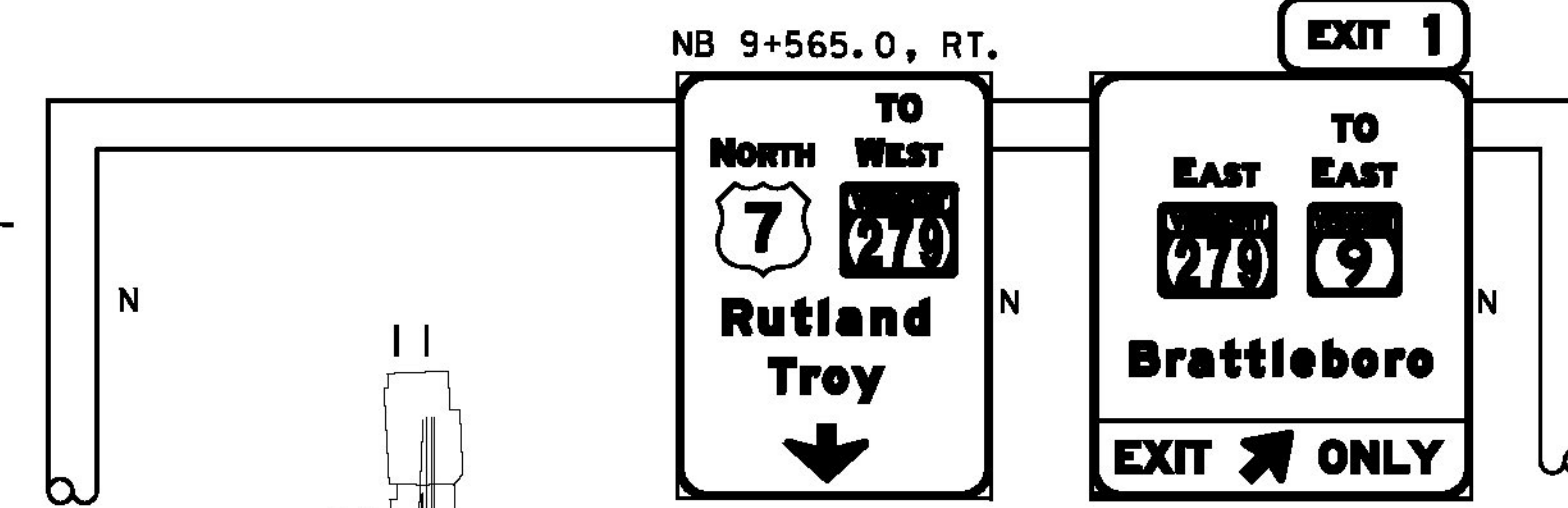
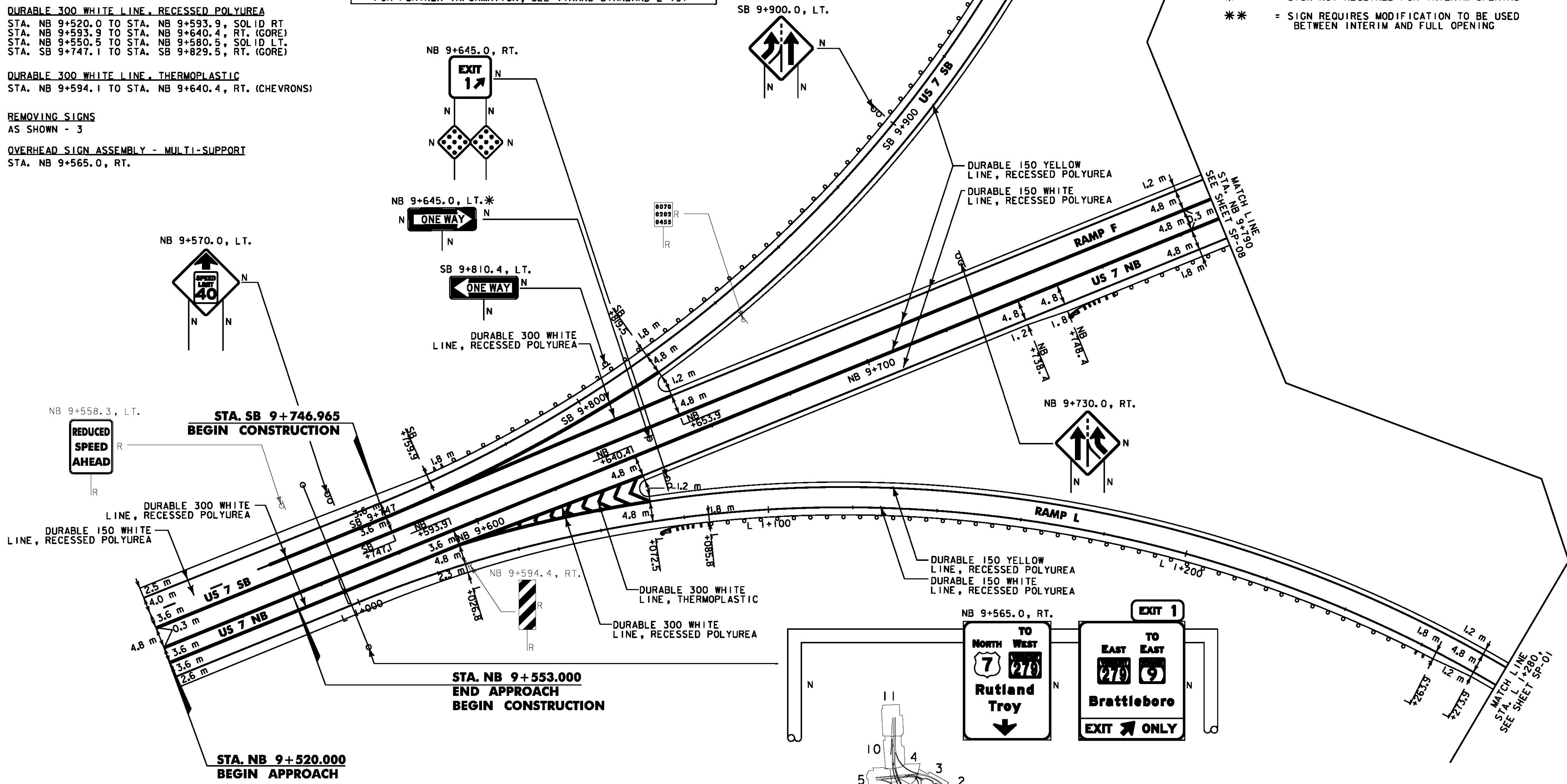
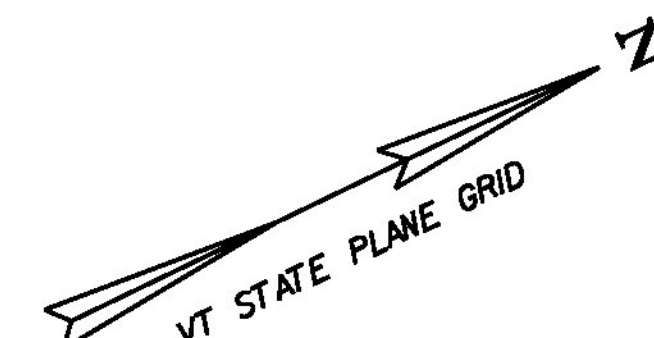
DELINEATOR WITH STEEL POST

ROADWAY	LENGTH (m)	SPACING (m)	COLOR	TYPE
RAMP F				
NB 9+653.9, LT - NB 9+790.0, LT	136	30.5	WHITE	I
RAMP L				
L 1+072.5, LT - L 1+280.0, LT	208	30.5	YELLOW	I
US 7 NB				
NB 9+553.0, RT - NB 9+640.4, RT	87	30.5	WHITE	II
NB 9+553.0, LT - NB 9+790.0, LT	237	80.5	YELLOW	I
NB 9+640.4, RT - NB 9+790.0, RT	150	80.5	WHITE	I
US 7 SB				
SB 9+747.0, LT - SB 9+970.0, LT	223	80.5	WHITE	I
SB 9+747.0, RT - SB 9+829.5, RT	83	30.5	YELLOW	II
SB 9+829.5, RT - SB 9+970.0, RT	141	80.5	YELLOW	I

FOR FURTHER INFORMATION, SEE VTRANS STANDARD E-197

SIGN LEGEND

- N R = NEW
- R&S = REMOVE & SALVAGE
- S = SALVAGE SIGN
- RET = RETAIN
- ⊕ = NEW SIGN & POST
- ⊙ = RETURN TO TOWN OF BENNINGTON
- * = SIGN NOT REQUIRED FOR INTERIM OPENING
- ** = SIGN REQUIRES MODIFICATION TO BE USED BETWEEN INTERIM AND FULL OPENING



NOTE: ALL DIMENSIONS IN MILLIMETERS (mm) EXCEPT WHERE NOTED



PROJECT NAME:	BENNINGTON
PROJECT NUMBER:	NH 019-1(54)
FILE NAME:	...\\zd307c4sgnvm_plans.prf
DESIGN SUPERVISOR:	GREG EDWARDS
DESIGNED BY:	MARC FOISY
SIGNS AND MARKINGS SP-09	
PLOT DATE:	1/26/2010
DRAWN BY:	STANTEC
CHECKED BY:	GARY SANTY
SHEET	181 OF 468

1/26/2010 4:50:42 PM v:\953\cvt\live\9531002\transportation\drawings\plan\9531002\c4sgnvm_plans.prf