

**MILLED RUMBLE STRIPS**

STA. WB 9+664.8, LT. - STA. WB 9+770.0, LT.  
 STA. WB 9+664.8, RT. - STA. WB 9+880.0, RT.  
 STA. WB 9+832.2, LT. - STA. WB 9+880.0, LT.  
 STA. EB 9+612.0, RT. - STA. EB 9+820.0, RT.  
 STA. EB 9+650.2, LT. - STA. EB 9+820.0, LT.

**DURABLE 150 WHITE LINE, RECESSED POLYUREA**

STA. WB 9+664.8 TO STA. WB 9+880.0, SOLID RT.  
 STA. EB 9+612.0 TO STA. EB 9+820.0, DASHED RT.  
 STA. EB 9+650.2 TO STA. EB 9+820.0, SOLID C  
 STA. F 1+062.4 TO STA. F 1+110.0, SOLID C  
 STA. L 1+280.0 TO STA. L 1+503.3, SOLID C

**DURABLE 150 YELLOW LINE, RECESSED POLYUREA**

STA. WB 9+664.8 TO STA. WB 9+770.0, SOLID LT.  
 STA. WB 9+832.2 TO STA. WB 9+880.0, SOLID C  
 STA. EB 9+612.0 TO STA. EB 9+820.0, SOLID RT.  
 STA. F 1+000.0 TO STA. F 1+110.0, SOLID LT.  
 STA. L 1+280.0 TO STA. L 1+426.4, SOLID LT.

**DURABLE 300 WHITE LINE, RECESSED POLYUREA**

STA. WB 9+664.8 TO STA. WB 9+832.2, C & LT. (GORE)  
 STA. EB 9+572.0 TO STA. EB 9+650.2, C & LT. (GORE)

**DURABLE 300 WHITE LINE, THERMOPLASTIC**

STA. WB 9+770.0 TO STA. WB 9+832.2, LT. (CHEVRONS)

**DELINATOR WITH STEEL POST**

ROADWAY	LENGTH (m)	SPACING (m)	COLOR	TYPE
VT 279 EB				
EB 9+623.0, RT - EB 9+820.0, RT	197	80.5	YELLOW	I
EB 9+650.2, LT - EB 9+820.0, LT	170	80.5	WHITE	I
VT 279 WB				
WB 9+675.8, LT - WB 9+770.0, LT	97	80.5	YELLOW	I
WB 9+675.8, RT - WB 9+880.0, RT	207	80.5	WHITE	I
WB 9+832.2, LT - WB 9+880.0, LT	48	80.5	YELLOW	I
RAMP F				
F 1+000.0, LT - F 1+062.4, LT	62	30.5	YELLOW	II
F 1+062.9, RT - F 1+110.0, RT	17	30.5	WHITE	I
RAMP L				
L 1+280.0, LT - L 1+426.4, LT	116	30.5	YELLOW	I
L 1+426.4, RT - L 1+455.2, RT	29	30.5	WHITE	II

FOR FURTHER INFORMATION, SEE VTRANS STANDARD E-197

**OVERHEAD SIGN ASSEMBLY - MULTI-SUPPORT**

STA. WB 9+770.0

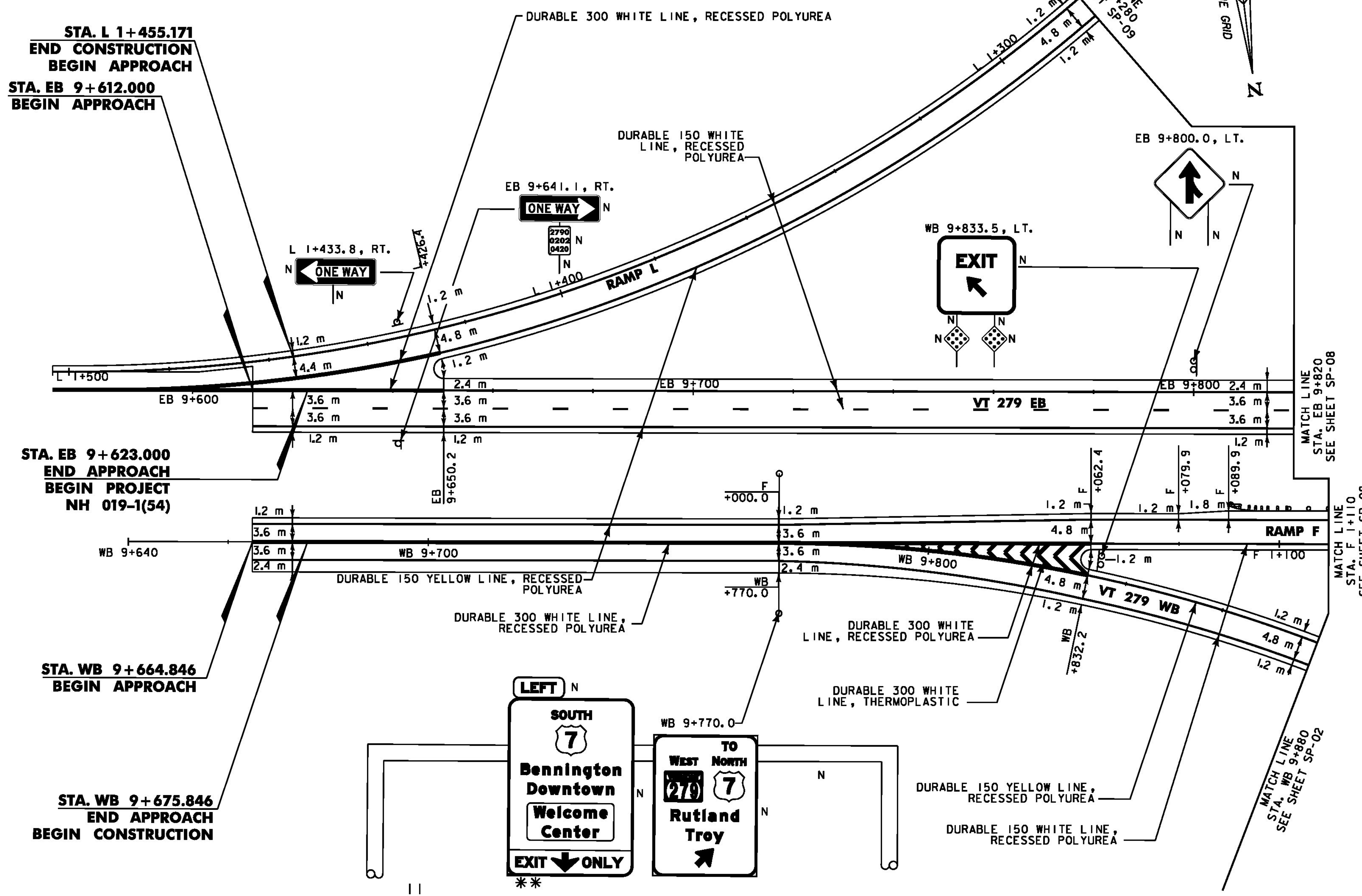
**STA. L 1+455.171  
END CONSTRUCTION  
BEGIN APPROACH**

**STA. EB 9+612.000  
BEGIN APPROACH**

**STA. EB 9+623.000  
END APPROACH  
BEGIN PROJECT  
NH 019-1(54)**

**STA. WB 9+664.846  
BEGIN APPROACH**

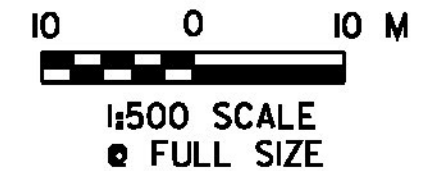
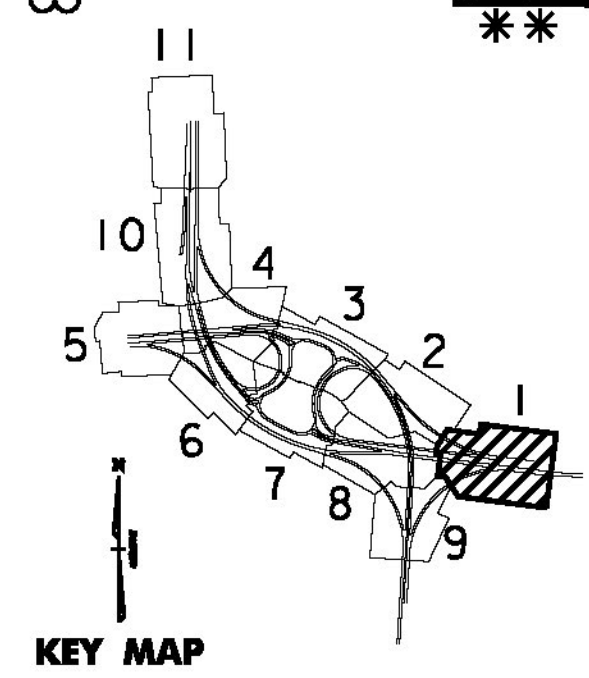
**STA. WB 9+675.846  
END APPROACH  
BEGIN CONSTRUCTION**



NOTE: ALL DIMENSIONS IN MILLIMETERS (mm) EXCEPT WHERE NOTED

**SIGN LEGEND**

- N = NEW
- R = REMOVE
- R&S = REMOVE & SALVAGE
- S = SALVAGE SIGN
- RET = RETAIN
- ⊕ = NEW SIGN & POST
- ⊙ = RETURN TO TOWN OF BENNINGTON
- \* = SIGN NOT REQUIRED FOR INTERIM OPENING
- \*\* = SIGN REQUIRES MODIFICATION TO BE USED BETWEEN INTERIM AND FULL OPENING



PROJECT NAME:	BENNINGTON
PROJECT NUMBER:	NH 019-1(54)
FILE NAME:	...z307c4sgnvm.plans.ptf
DESIGN SUPERVISOR:	GREG EDWARDS
DESIGNED BY:	MARC FOISY
SIGNS AND MARKINGS SP-01	
PLOT DATE:	1/26/2010
DRAWN BY:	STANTEC
CHECKED BY:	GARY SANTY
SHEET	173 OF 468

1/26/2010 4:50:26 PM v:\953\active\195\002\transportation\bennington\contract\4\blot\_files\z307c4sgnvm.plans.ptf