

TOP STIFFENER (IF REQUIRED) IS ANGLE WELDED TO TOP AND ORIENTED PERPENDICULAR TO CORRUGATIONS. SEE TABLE BELOW FOR STIFFENER SIZE.

TOP IS CORRUGATED METAL OR 1/8" STEEL PLATE. PRESSURE RELIEF HOLES MAY BE OMITTED, IF ENDS OF CORRUGATIONS ARE LEFT FULLY OPEN WHEN CORRUGATED TOP IS WELDED TO CYLINDER. SEE TABLE BELOW FOR GAGE OF TOP.

CYLINDER IS CORRUGATED METAL PIPE OR FABRICATED FROM 1/8" STEEL PLATE. SEE TABLE BELOW FOR GAGE OF TOP.

ISOMETRIC

12" SPACER BAR (TYP.) SAME MATERIAL AS SUPPORT BAR

SUPPORT BAR SIZE (#6 REBAR MINIMUM)

SECTION A-A

CONCENTRIC TRASH RACK AND ANTI-VORTEX DEVICE

NOT TO SCALE

SEDIMENT BASIN #	1A	2	3A
RISER (IN)	30	54	30
TOP STIFFENER	N/A	1 1/4 X 1 1/4 X 1 1/4	N/A
TOP (GA)	12	10	12
CYLINDER (GA)	14	12	14
H (IN)	16	25	16
D (IN)	36	78	48

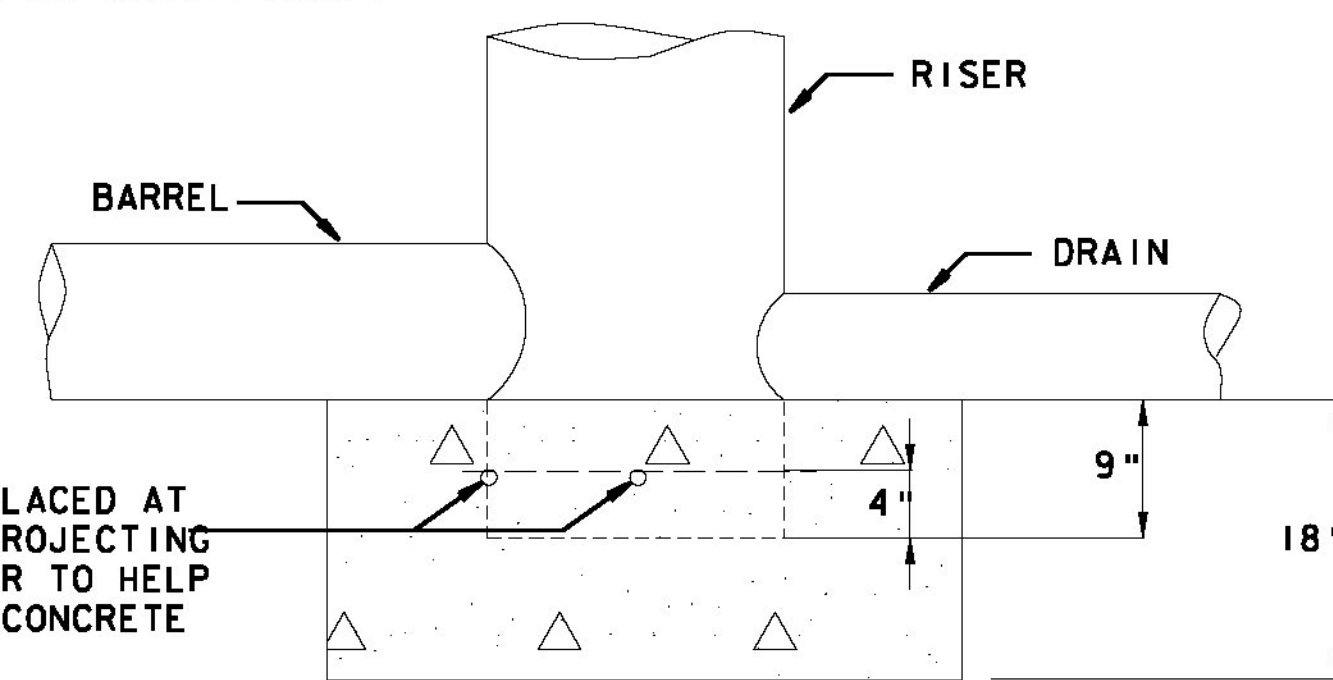
NOTES:

1. THE CYLINDER MUST BE FIRMLY FASTENED TO THE TOP OF THE RISER.
2. SUPPORT BARS ARE WELDED TO THE TOP OF THE RISER OR ATTACHED BY STRAPS BOLTED TO THE TOP OF THE RISER.

SYMBOL



ANGLE OF STUB TO BE SHOWN, ANGLE BASED ON BARREL GRADE



2-#8 (MIN.) BARS PLACED AT RIGHT ANGLES AND PROJECTING INTO SIDES OF RISER TO HELP ANCHOR RISER INTO CONCRETE BASE

BASE WIDTH EQUALS 2x DIAMETER OF RISER

**RISER BASE DETAIL
SEDIMENT BASIN**

CONSTRUCTION SPECIFICATIONS

NOTES:

1. THE CONCRETE BASE SHALL BE POURED IN SUCH A MANNER TO INSURE THAT THE CONCRETE FILLS THE BOTTOM OF THE RISER TO THE INVERT OF THE OUTLET PIPE TO PREVENT THE RISER FROM BREAKING AWAY FROM THE BASE.
2. WITH ALUMINUM OR ALUMINIZED PIPE, THE EMBEDDED SECTION MUST BE PAINTED WITH CHROMATE OR EQUIVALENT.
3. RISER BASE MAY BE SIZED AS COMPUTED USING FLOATATION WITH A FACTOR OF SAFETY OF 1.2.

ADAPTED FROM DETAILS PROVIDED BY: NEW YORK STATE DEC
ORIGINALLY DEVELOPED BY USDA-NRCS
VERMONT DEPARTMENT OF ENVIRONMENTAL CONSERVATION

SEDIMENT BASIN

NOTES:

1. REFER TO "THE VERMONT STANDARDS & SPECIFICATIONS FOR EROSION PREVENTION & SEDIMENT CONTROL -2006-" FROM THE VT AGENCY OF NATURAL RESOURCES FOR ADDITIONAL GUIDANCE.
2. ADAPTED FROM DETAILS PROVIDED BY: NEW YORK STATE DEC ORIGINALLY DEVELOPED BY USDA-NRCS VERMONT DEPARTMENT OF ENVIRONMENTAL CONSERVATION
3. ENGLISH UNITS RETAINED FROM ORIGINAL DESIGN DATA FOR RISER DETAILS.

NOTES:

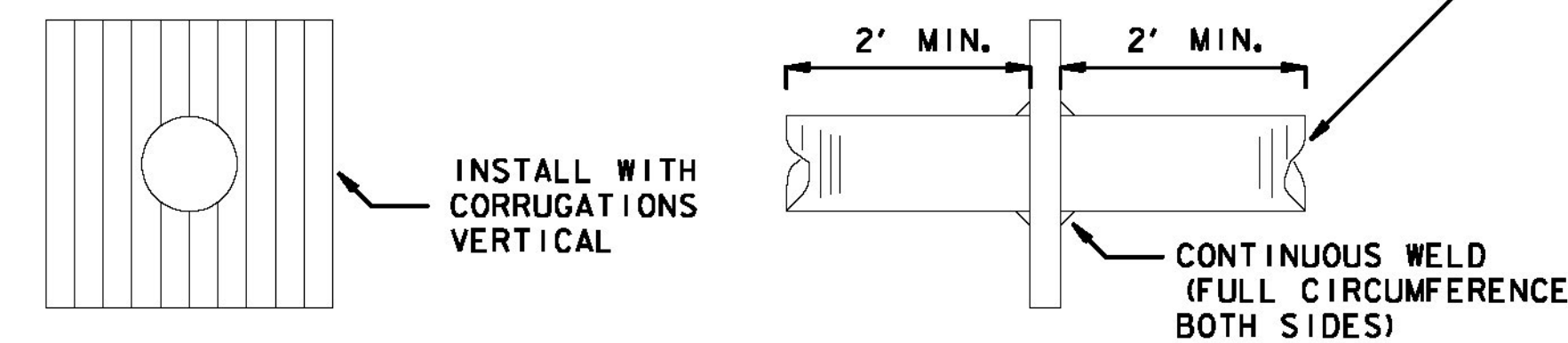
1. REFER TO "THE VERMONT STANDARDS & SPECIFICATIONS FOR EROSION PREVENTION & SEDIMENT CONTROL -2006-" FROM THE VT AGENCY OF NATURAL RESOURCES FOR ADDITIONAL GUIDANCE.
2. ADAPTED FROM DETAILS PROVIDED BY: NEW YORK STATE DEC ORIGINALLY DEVELOPED BY USDA-NRCS VERMONT DEPARTMENT OF ENVIRONMENTAL CONSERVATION
3. ENGLISH UNITS RETAINED FROM ORIGINAL DETAIL

**TYPICAL ANTISEEP COLLARS
NOT TO SCALE**

SYMBOL



AT LEAST THE LAST TWO CORRUGATIONS ON EACH END MUST BE ANGULAR OR FLANGE.

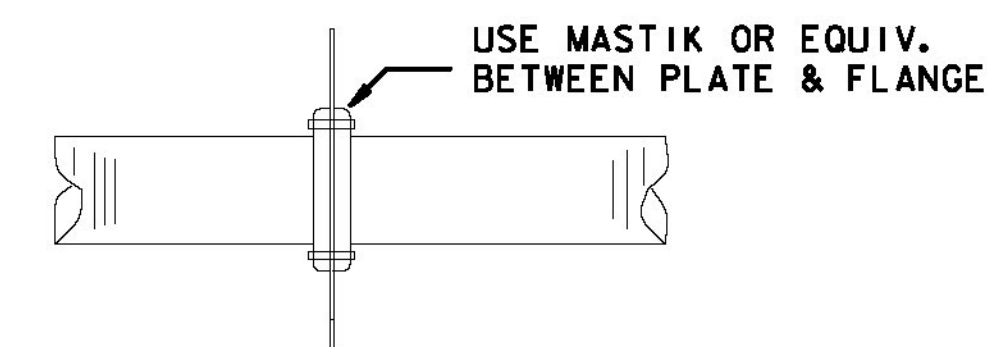


**COLLAR WELDED IN PLACE ON
BARREL SECTION**

1. PLATES TO BE PRE-CUT CLAMPED TOGETHER & PRE-DRILLED & LABELED TO FACILITATE WATER TIGHT FIELD ASSEMBLY.

CONTINUOUS WELD (FULL CIRCUMFERENCE BOTH SIDES)
WELDED FLANGE
STAINLESS STEEL NUT & BOLT CONNECTION WITH MASTIK BETWEEN PLATES.

**MULTI-PIECE COLLAR FOR LARGE
PIPES**



COLLAR FOR FLANGE JOINT PIPE

ANTISEEP COLLAR

NOTES:

1. PAYMENT FOR ANTI-SEEP COLLARS SHALL BE INCIDENTAL TO 900.620 SPECIAL PROVISION (TEMPORARY SEDIMENT BASIN).
2. ANTI-SEEP COLLARS SHALL BE SPACED EVENLY ALONG THE LENGTH OF THE OUTLET PIPE BASIN.

SEDIMENT BASIN #	# COLLARS	DIMENSIONS
1A	2	1650 X 1650
2	4	1800 X 1800
3A	2	1350 X 1350

ADAPTED FROM DETAILS PROVIDED BY: NEW YORK STATE DEC
ORIGINALLY DEVELOPED BY USDA-NRCS
VERMONT DEPARTMENT OF ENVIRONMENTAL CONSERVATION

SEDIMENT BASIN

NOTES:

1. REFER TO "THE VERMONT STANDARDS & SPECIFICATIONS FOR EROSION PREVENTION & SEDIMENT CONTROL -2006-" FROM THE VT AGENCY OF NATURAL RESOURCES FOR ADDITIONAL GUIDANCE.
2. ADAPTED FROM DETAILS PROVIDED BY: NEW YORK STATE DEC ORIGINALLY DEVELOPED BY USDA-NRCS VERMONT DEPARTMENT OF ENVIRONMENTAL CONSERVATION
3. ENGLISH UNITS RETAINED FROM ORIGINAL DESIGN DATA FOR ANTI SEEP COLLAR DETAILS.



PROJECT NAME: BENNINGTON
PROJECT NUMBER: NH 019-1(54)
FILE NAME: ...\\plot_files\zd307c4det.epsc.plt PLOT DATE: 1/26/2010
DESIGN SUPERVISOR: GREG EDWARDS DRAWN BY: STANTEC
DESIGNED BY: MARC FOISY CHECKED BY: GARY SANTY
EP & SC DETAILS ECD-09 SHEET 170 OF 468