

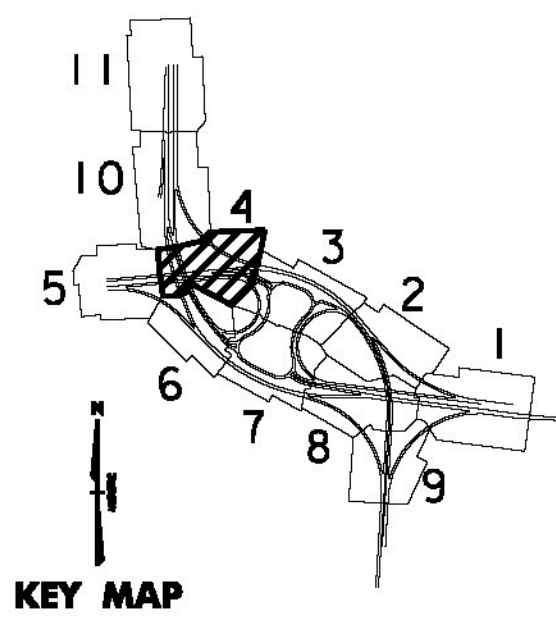
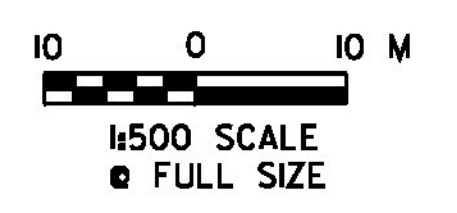
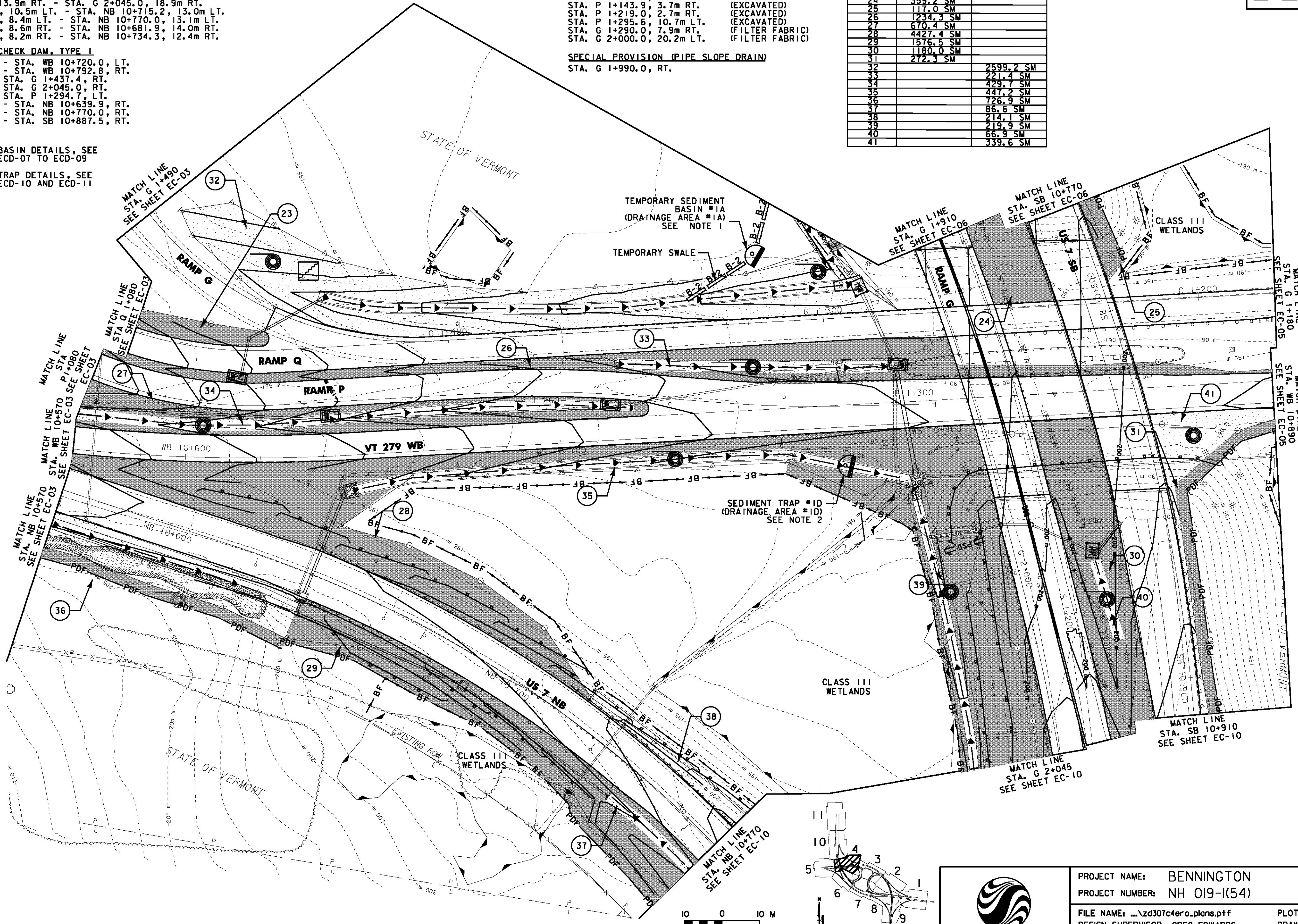
GEOTEXTILE FOR SILT FENCE
 STA. WB 10+801.7, 32.3m RT. - STA. WB 10+875.1, 14.4m RT.
 STA. G 1+980.6, 2.1m RT. - STA. G 2+045.0, 12.5m RT.
 STA. G 2+001.7, 13.9m RT. - STA. G 2+045.0, 18.9m RT.
 STA. NB 10+608.7, 10.5m LT. - STA. NB 10+715.2, 13.0m LT.
 STA. NB 10+711.8, 8.4m LT. - STA. NB 10+770.0, 13.1m LT.
 STA. NB 10+647.2, 8.6m RT. - STA. NB 10+681.9, 14.0m RT.
 STA. NB 10+677.8, 8.2m RT. - STA. NB 10+734.3, 12.4m RT.

TEMPORARY STONE CHECK DAM, TYPE I
 STA. WB 10+570.0 - STA. WB 10+720.0, LT.
 STA. WB 10+642.3 - STA. WB 10+792.8, RT.
 STA. G 1+290.7 - STA. G 1+437.4, RT.
 STA. G 1+975.4 - STA. G 2+045.0, RT.
 STA. P 1+220.0 - STA. P 1+294.7, LT.
 STA. NB 10+570.0 - STA. NB 10+639.9, RT.
 STA. NB 10+740.1 - STA. NB 10+770.0, RT.
 STA. SB 10+864.7 - STA. SB 10+887.5, RT.

NOTES:
 1. FOR SEDIMENT BASIN DETAILS, SEE EPSC DETAILS ECD-07 TO ECD-09
 2. FOR SEDIMENT TRAP DETAILS, SEE EPSC DETAILS ECD-10 AND ECD-11

INLET PROTECTION DEVICE, TYPE I
 STA. P 1+118.9, 7.5m LT. (EXCAVATED)
 STA. P 1+143.9, 3.7m RT. (EXCAVATED)
 STA. P 1+219.0, 2.7m RT. (EXCAVATED)
 STA. P 1+295.6, 10.7m LT. (EXCAVATED)
 STA. G 1+290.0, 7.9m RT. (FILTER FABRIC)
 STA. G 2+000.0, 20.2m LT. (FILTER FABRIC)
SPECIAL PROVISION (PIPE SLOPE DRAIN)
 STA. G 1+990.0, RT.

AREA NUMBER	SEEDING WINTER RYE & HAY MULCHING	EROSTON MATTING AREAS
23	179.8 SM	
24	359.2 SM	
25	117.0 SM	
26	1234.3 SM	
27	670.4 SM	
28	4427.4 SM	
29	1576.5 SM	
30	1180.0 SM	
31	272.3 SM	
32		2599.2 SM
33		221.4 SM
34		429.7 SM
35		447.2 SM
36		726.9 SM
37		86.6 SM
38		214.1 SM
39		219.9 SM
40		66.9 SM
41		339.6 SM



PROJECT NAME: BENNINGTON
PROJECT NUMBER: NH 019-1(54)
FILE NAME: ...zd307c4ero.plans.ptf
DESIGN SUPERVISOR: GREG EDWARDS
DESIGNED BY: MARC FOISY
EROSION CONTROL EC-04
PLOT DATE: 1/26/2010
DRAWN BY: STANTEC
CHECKED BY: GARY SANTY
SHEET 153 OF 468

1/26/2010 4:56:08 PM V:\953\active\9531002\transportation\bennington\ec\ero.plans.ptf