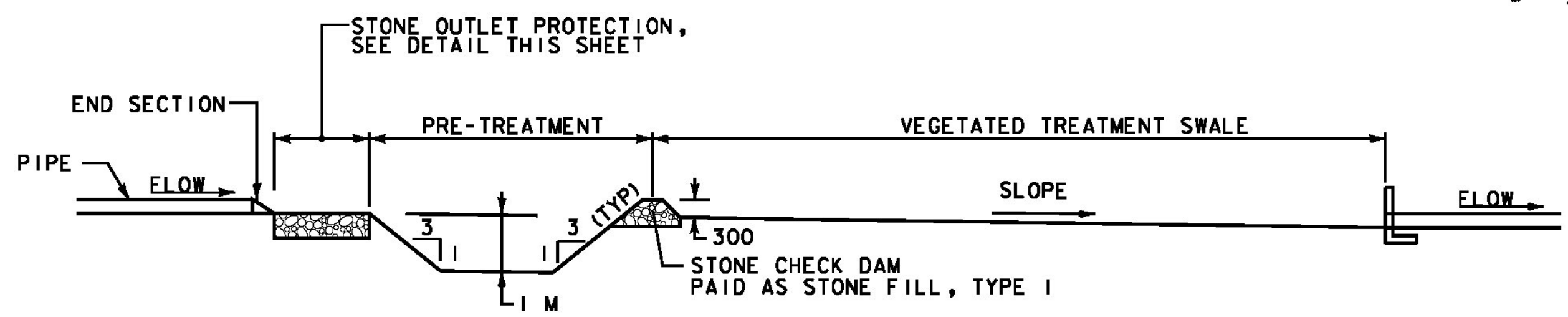


VEGETATED TREATMENT SWALE																	
SWALE NAME	SYSTEM	LOCATION	SWALE SHAPE	PRE-TREATMENT LENGTH (m)	SWALE LENGTH (m)	SWALE WIDTH (m)	SWALE DEPTH (m)	SIDE SLOPES	UPSTREAM INVERT	DOWNSTREAM INVERT	SLOPE (%)	ADDITIONAL CHECK DAMS		WQ _v (cms)	V _{WQv} (mps)	WQ _v FLOW DEPTH (M)	10 YEAR FLOW DEPTH (M)
												YES	NO				
SW1A	1	STA. G 1+290.0 - G 1+435.0, RT.	PARABOLIC*	-	145	2.4	0.60	4:1	192.8	188.8	2.8%		X	0.034	0.21	0.11	0.26
SW1B	1	STA. WB 10+640.0 - WB 10+790.0, RT.	FLAT	-	150	2.4	0.60	4:1	192.9	187.7	3.5%		X	0.059	0.21	0.09	0.20
SW1C	1	STA. WB 10+240.0 - WB 10+565, LT.	PARABOLIC*	-	325	2.4	0.60	4:1	208.3	197.0	3.5%		X	0.045	0.27	0.12	0.23
SW1D	1	STA. WB 10+565.0 - STA WB 10+640.0, LT.	PARABOLIC*	-	75	2.4	0.60	4:1	197.0	194.3	3.6%		X	0.006	0.12	0.05	0.12
SW1E	1	STA. WB 10+640.0 - WB 10+720.0, LT.	PARABOLIC*	-	80	2.4	0.60	4:1	194.3	192.0	2.9%		X	0.008	0.12	0.06	0.14
SW1F	1	STA. P 1+120.0 - P 1+290.0, LT.	PARABOLIC*	-	170	2.4	0.60	4:1	195.5	189.7	3.4%		X	0.014	0.18	0.07	0.15
SW1G	1	STA. G 1+972.0 - G 2+120.0, RT.	FLAT	-	148	2.4	0.60	2:1	195.2	191.0	3.5%		X	0.057	0.24	0.09	0.22
SW1H	1	STA. G 1+720.0 - G 1+900.0, RT.	FLAT	-	180	2.4	0.60	4:1	190.8	189.5	0.6%		X	0.048	0.12	0.12	0.26
SW2A	2	STA. EB 10+280.0 - EB 10+490.0, RT.	FLAT	14.6	190	2.4	0.60	4:1	193.2	191.0	1.0%		X	0.079	0.24	0.11	0.21
SW2B	2	STA. S 1+801.0, RT. - S 2+031.0, RT.	PARABOLIC*	-	200	2.4	0.60	4:1	193.6	191.6	1.0%		X	0.014	0.12	0.10	0.21
SW2C	2	STA. EB 10+490.0 RT. - SB 10+700.0, RT.	PARABOLIC*	-	220	2.4	0.60	4:1	197.0	193.1	1.7%		X	0.037	0.21	0.12	0.22
SW3C	3	STA. SB 9+820.0 - SB 10+140.0, LT.	FLAT	-	320	2.4	0.60	2:1	198.4	195.9	1.5%		X	0.071	0.21	0.12	0.27

* - SEE TYPICAL SECTIONS FOR PARABOLIC SHAPE DETAIL

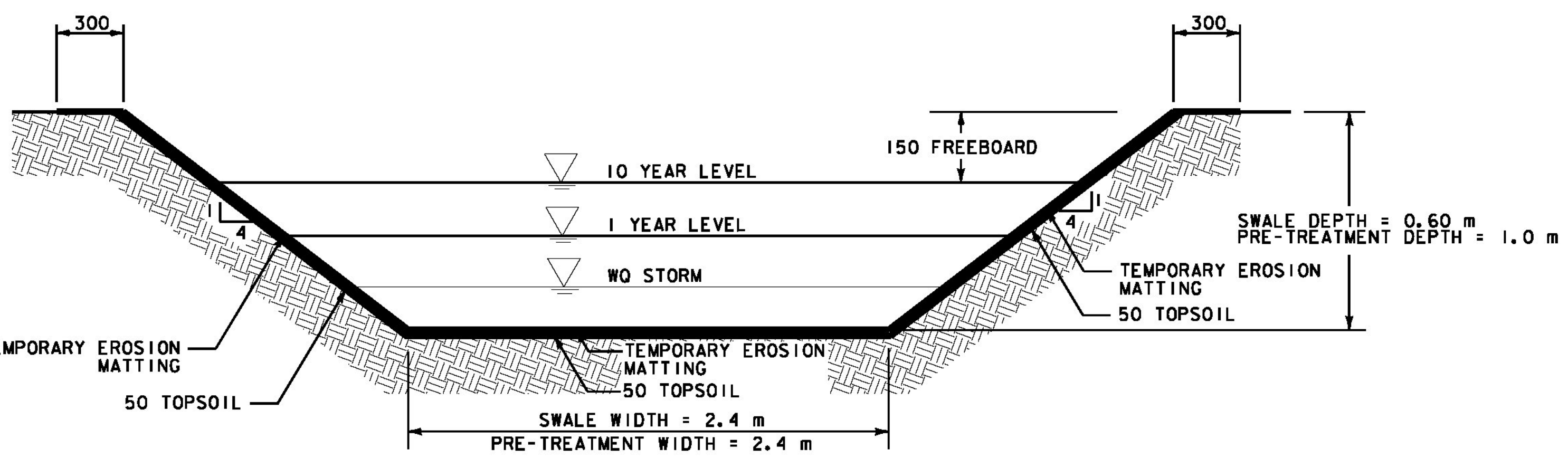
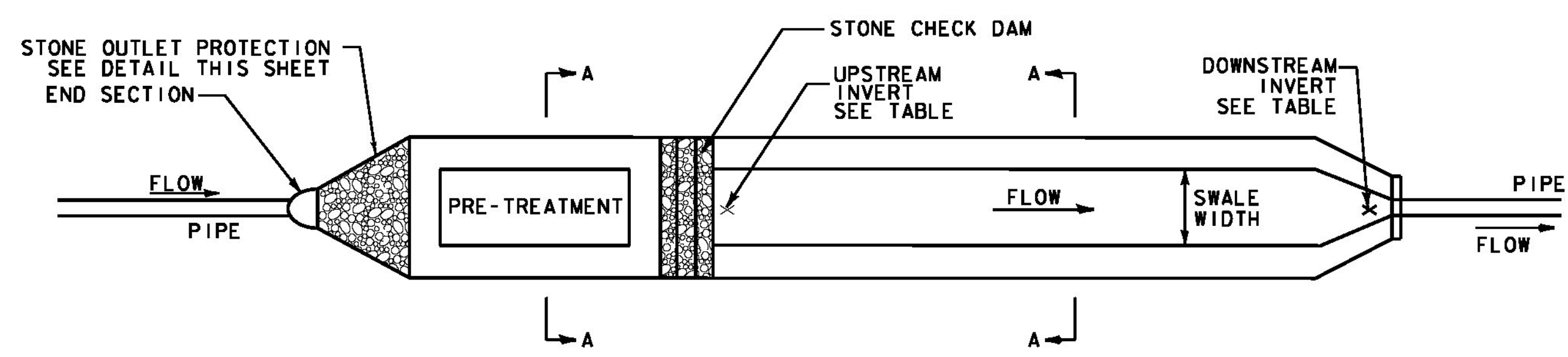
STONE OUTLET PROTECTION								
OUTLET PIPE NO.	PIPE SIZE (mm)	FLOW (cms)	VELOCITY (m/s)	STONE TYPE	PAD LENGTH (m)	PAD WIDTH #1 (m)	PAD WIDTH #2 (m)	PAD THICKNESS (mm)
SYSTEM 1								
101	900	0.83	2.27	II	3.7	1.8	2.4	600
106	450	0.08	2.23	II	1.8	0.9	0.9	300
108	600	0.27	1.62	I	2.9	3.8	3.8	300
113	450	0.11	3.12	II	1.8	0.9	0.9	600
116	450	0.03	0.61	I	1.8	0.9	0.9	300
118	450	0.02	1.65	I	13.8	0.9	0.9	300
119	600			II	2.4	1.2	1.2	600
120	450	0.10	1.27	I	16.7	0.9	0.9	300
124	600			II	2.4	0.9	1.4	600
130	450	0.07	3.13	II	1.8	0.9	0.9	600
132	450	0.07	1.14	II	2.4	0.9	1.4	300
SYSTEM 2								
200	900	1.09	2.70	II	5.8	1.8	3.2	600
CV205	450	0.08	2.41	I	1.8	0.9	0.9	600
209	750	0.64	2.09	II	3.4	8.4	8.4	300
211	600	0.43	1.89	I	3.4	0.9	1.4	300
213	600	0.25	3.09	I	4.6	3.7	3.7	600
227	450	0.02	0.84	I	2.4	0.9	1.4	300
229	450	0.02	1.15	I	1.8	0.9	0.9	300
238	450	0.01	1.19	I	1.8	0.9	0.9	300
239	450	0.03	0.89	I	1.8	0.9	0.9	300
SYSTEM 3								
302	600	0.25	1.68	I	4.9	2.1	2.1	600
CV306	450	0.34	2.24	II	2.4	1.2	1.2	300
307	300	0.03	2.53	II	18.0	0.6	0.6	600
308	300	0.03	3.06	II	18.0	0.6	0.6	600
309	300	0.01	2.42	II	21.5	0.6	0.6	600
310	300	0.01	2.53	II	24.0	0.6	0.6	600
311	450	0.06	2.71	II	24.0	0.9	0.9	600
313	450	0.06	1.67	I	7.0	1.0	1.0	600
315	450	0.02	0.86	I	7.0	1.0	1.0	600
316	450	0.02	1.16	I	7.0	1.0	1.0	600

- NOTES:
1. THE EXCAVATION OF THESE SWALES WILL BE PAID AS ITEM 203.15 - COMMON EXCAVATION. ALL EXCAVATION IS ACCOUNTED FOR IN THE EARTHWORKS SUMMARY SHEET.
 2. VEGETATED TREATMENT SWALE TABLE REPRESENTS SECTIONS OF SWALES USED FOR STORMWATER TREATMENT AND IS FOR INFORMATIONAL PURPOSES ONLY. REFER TO PLANS AND CROSS-SECTIONS FOR ALL TREATMENT AND CONVEYANCE SWALE DIMENSIONS.



NOTE: PRE-TREATMENT AREA AND STONE CHECK DAM ONLY USED FOR SWALE 2A

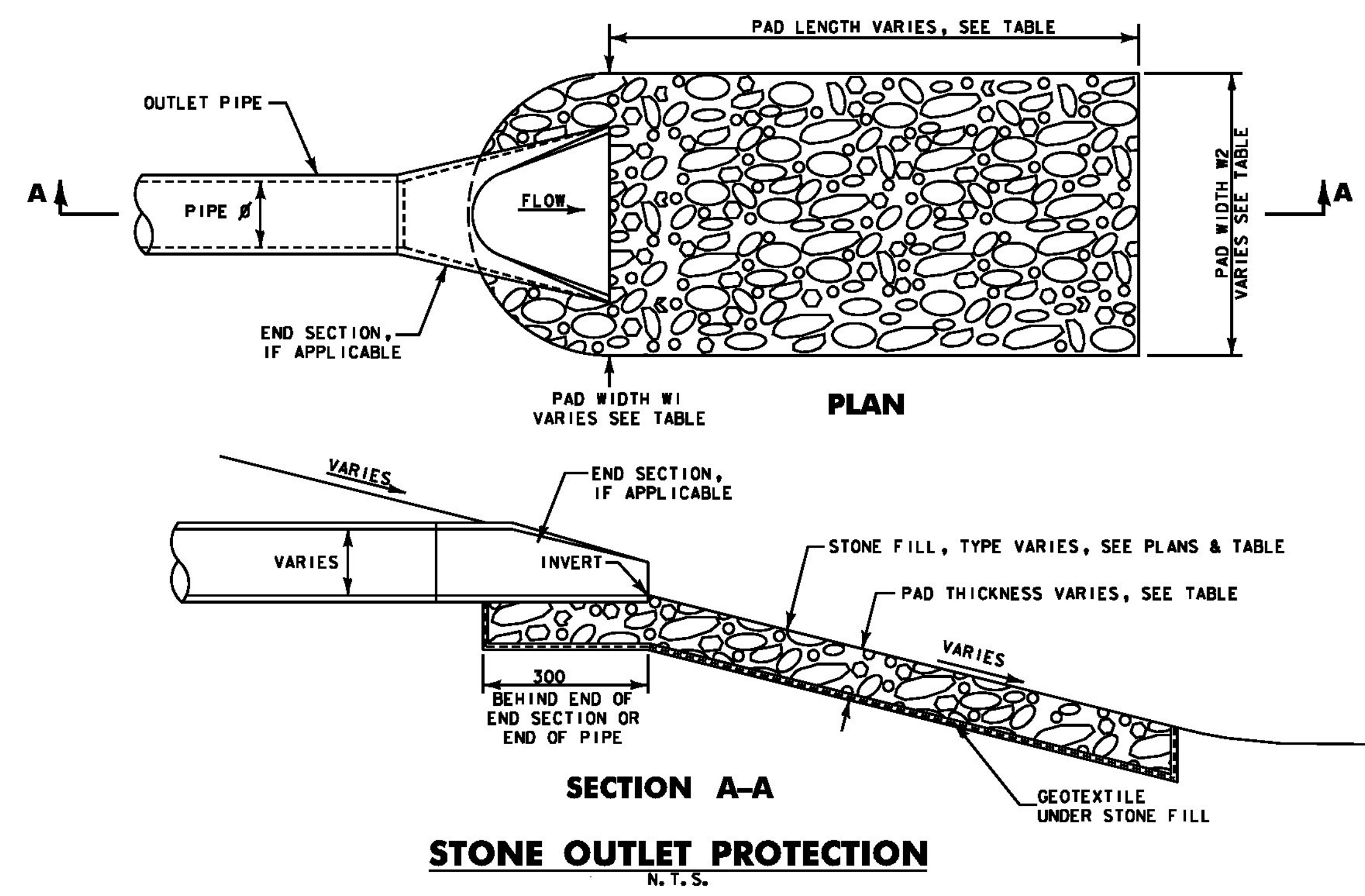
ELEVATION



SECTION A-A

**VEGETATED TREATMENT SWALE
FLAT BOTTOM DETAIL**

N. T. S.



STONE OUTLET PROTECTION

N. T. S.



PROJECT NAME: BENNINGTON
 PROJECT NUMBER: NH 019-1(54)
 FILE NAME: ...\\plot_files\zd307c4det.swm.ptf PLOT DATE: 1/26/2010
 DESIGN SUPERVISOR: GREG EDWARDS DRAWN BY: STANTEC
 DESIGNED BY: MARC FOISY CHECKED BY: GARY SANTY
 STORMWATER MANAGEMENT DET. SWM-01 SHEET 148 OF 468

1/26/2010 4:48:10 PM v:\953\active\1953002\transportation\grawma\contract\4\plot_files\zd307c4det.swm.ptf