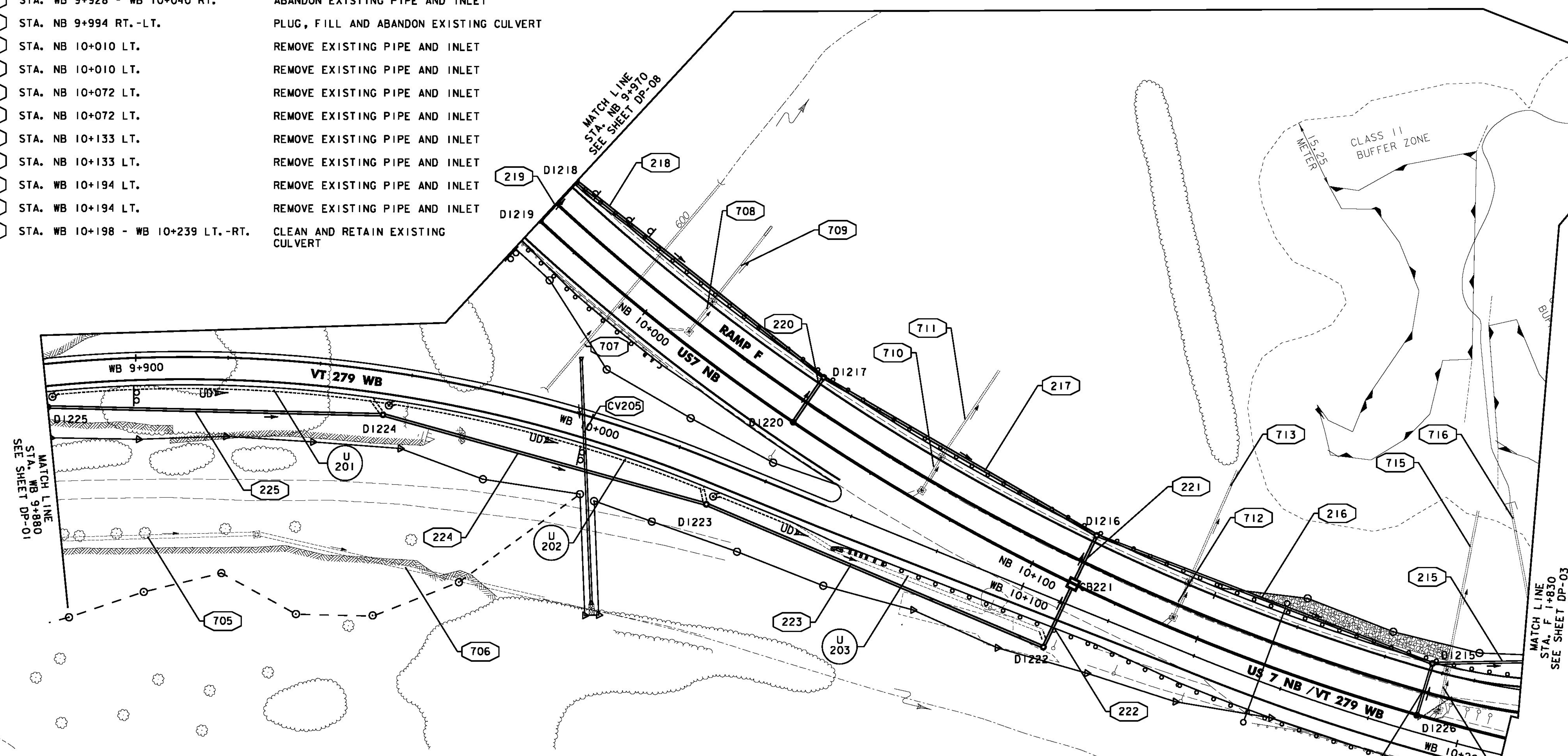


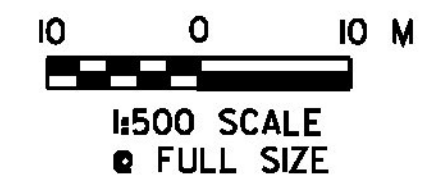
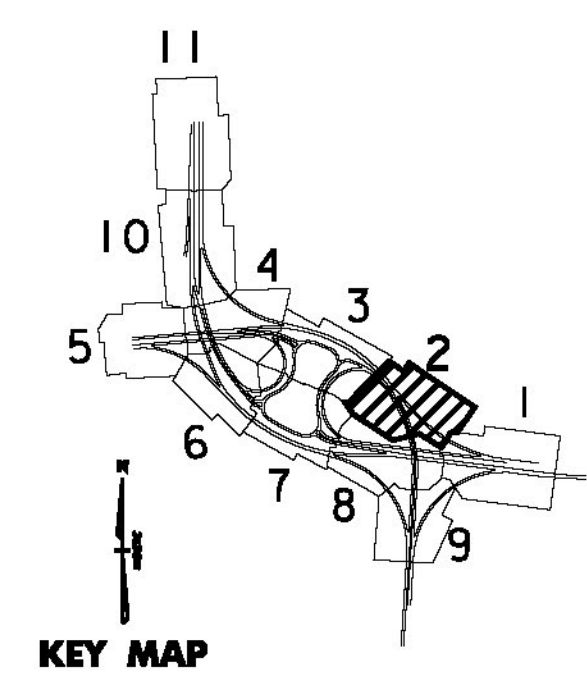
PIPE #	LOCATION	COMMENTS
706	STA. WB 9+928 - WB 10+040 RT.	ABANDON EXISTING PIPE AND INLET
707	STA. NB 9+994 RT. -LT.	PLUG, FILL AND ABANDON EXISTING CULVERT
708	STA. NB 10+010 LT.	REMOVE EXISTING PIPE AND INLET
709	STA. NB 10+010 LT.	REMOVE EXISTING PIPE AND INLET
710	STA. NB 10+072 LT.	REMOVE EXISTING PIPE AND INLET
711	STA. NB 10+072 LT.	REMOVE EXISTING PIPE AND INLET
712	STA. NB 10+133 LT.	REMOVE EXISTING PIPE AND INLET
713	STA. NB 10+133 LT.	REMOVE EXISTING PIPE AND INLET
714	STA. WB 10+194 LT.	REMOVE EXISTING PIPE AND INLET
715	STA. WB 10+194 LT.	REMOVE EXISTING PIPE AND INLET
716	STA. WB 10+198 - WB 10+239 LT. -RT.	CLEAN AND RETAIN EXISTING CULVERT



PIPE #	LOCATION	COMMENTS
CV205	STA. WB 9+994.2 LT. - WB 10+013.1 RT.	450 x 51.5 m PCCSP END SECTION AT INLET AND OUTLET STONE FILL TYPE I OUTLET PROTECTION
215	STA. F 1+850.0 RT. - F 1+790.0 RT.	450 x 57.4 m PCCSP
216	STA. NB 10+110.0 LT. - F 1+850.0 RT.	450 x 76.9 m PCCSP
217	STA. NB 10+040.0 LT. - NB 10+110.0 LT.	450 x 67.4 m OPTION 3
218	STA. NB 9+970.0 LT. - NB 10+040.0 LT.	450 x 67.4 m OPTION 1
219	STA. NB 9+970.0 LT. - NB 9+970.0 C	450 x 10.7 m OPTION 1
220	STA. NB 10+040.0 LT. - NB 10+040.0 C	450 x 10.9 m OPTION 3
221	STA. NB 10+110.0 LT. - NB 10+110.0 C	450 x 10.4 m PCCSP
222	STA. WB 10+109.1 RT. - NB 10+110.0 C	450 x 13.8 m OPTION 1
223	STA. WB 10+030.0 RT. - WB 10+109.1 RT.	450 x 78.4 m OPTION 3
224	STA. WB 9+955.0 RT. - WB 10+030.0 RT.	450 x 71.8 m OPTION 3
225	STA. WB 9+880.0 RT. - WB 9+955.0 RT.	450 x 71.7 m OPTION 1
226	STA. WB 10+190.0 LT. - F 1+850.0 RT.	450 x 10.9 m OPTION 3

UNDERDRAIN	
U 201	WB 9+882.0 - WB 9+955.0 RT. NEW 150 x 70.0 m UND. W/FLUSHING BASIN WB 9+882.0, RT. NEW 150 x 3.0 m UNDERDRAIN CARRIER PIPE @ OUTLET
U 202	WB 9+957.0 - WB 10+030. RT. NEW 150 x 70.0 m UND. W/FLUSHING BASIN WB 9+957.0, RT. NEW 150 x 3.0 m UNDERDRAIN CARRIER PIPE @ OUTLET
U 203	WB 10+032.0 - WB 10+109.1 RT. NEW 150 x 77.1 m UND. W/FLUSHING BASIN WB 10+032.0, RT. NEW 150 x 3.0 m UNDERDRAIN CARRIER PIPE @ OUTLET

NEW DRAINAGE STRUCTURES		
STRUCTURE #	LOCATION	COMMENTS
D1215	F 1+850.0 RT.	TYPE B GRATE
D1216	NB 10+110.0 LT.	TYPE B GRATE
D1217	NB 10+040.0 LT.	TYPE A GRATE
D1218	NB 9+970.0 LT.	TYPE A GRATE
D1219	NB 9+970.0 C	TYPE A GRATE
D1220	NB 10+040.0 C	TYPE A GRATE
CB221	NB 10+110.0 C	TYPE A GRATE
D1222	WB 10+109.1 RT.	TYPE B GRATE
D1223	WB 10+030.0 RT.	TYPE A GRATE
D1224	WB 9+955.0 RT.	TYPE A GRATE
D1225	WB 9+880.0 RT.	TYPE A GRATE
D1226	WB 10+190.0 LT.	TYPE B GRATE



PROJECT NAME:	BENNINGTON
PROJECT NUMBER:	NH 019-1(54)
FILE NAME:	...zd307c4drn.plans.prf
DESIGN SUPERVISOR:	GREG EDWARDS
DESIGNED BY:	MARC FOISY
DRAINAGE PLANS DP-02	
PLOT DATE:	1/26/2010
DRAWN BY:	STANTEC
CHECKED BY:	GARY SANTY
SHEET	128 OF 468

1/26/2010 4:48:34 PM v:\953\active\1953\002\transportation\drainage\bennington\019-1\files\z307c4drn.plans.prf