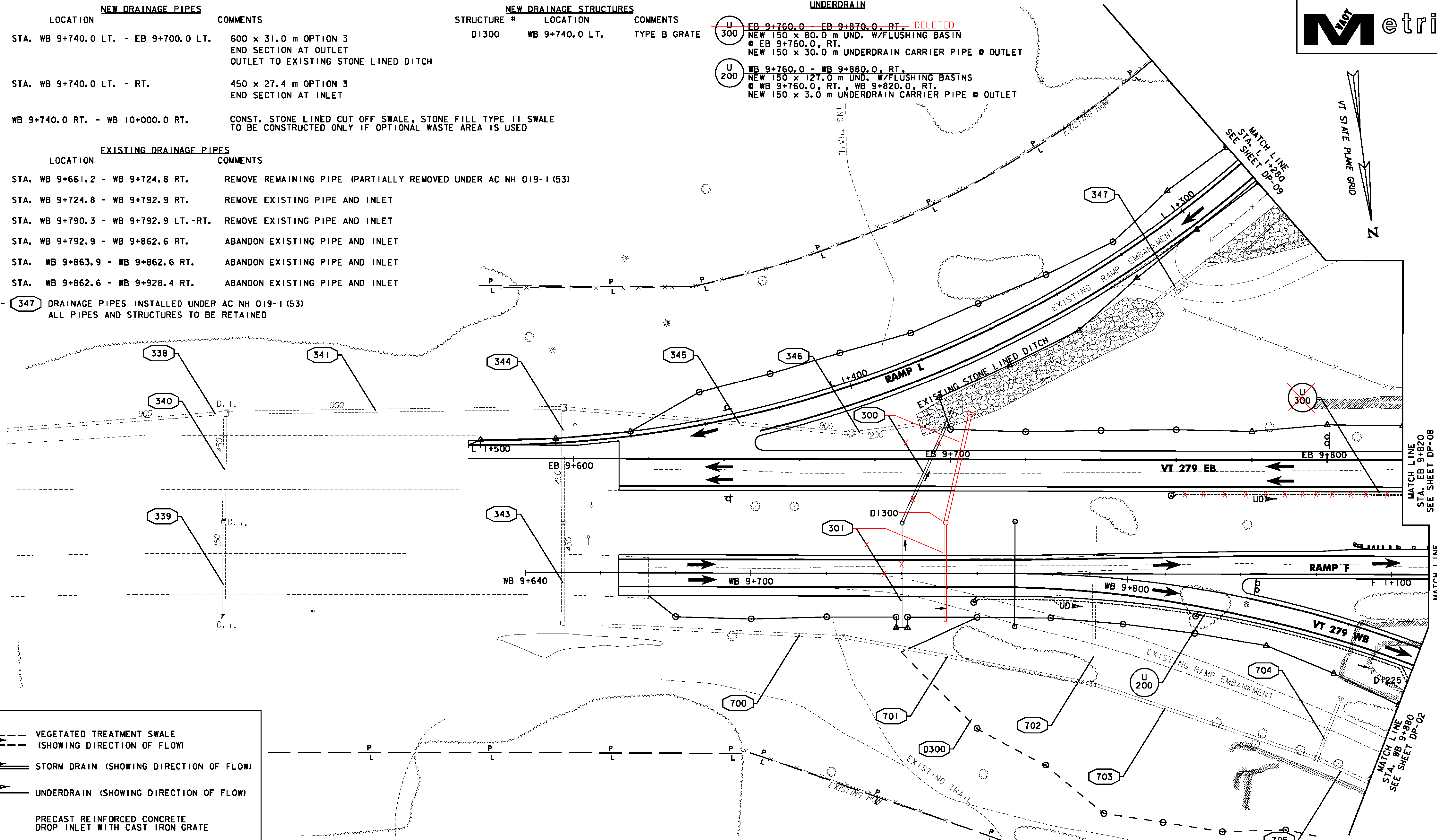


NEW DRAINAGE PIPES		
PIPE #	LOCATION	COMMENTS
300	STA. WB 9+740.0 LT. - EB 9+700.0 LT.	600 x 31.0 m OPTION 3 END SECTION AT OUTLET OUTLET TO EXISTING STONE LINED DITCH
301	STA. WB 9+740.0 LT. - RT.	450 x 27.4 m OPTION 3 END SECTION AT INLET
D300	WB 9+740.0 RT. - WB 10+000.0 RT.	CONST. STONE LINED CUT OFF SWALE, STONE FILL TYPE II SWALE TO BE CONSTRUCTED ONLY IF OPTIONAL WASTE AREA IS USED

NEW DRAINAGE STRUCTURES		
STRUCTURE #	LOCATION	COMMENTS
D1300	WB 9+740.0 LT.	TYPE B GRATE

UNDERDRAIN		
U 300	EB 9+760.0 - EB 9+870.0, RT.	DELETED NEW 150 x 80.0 m UND. W/FLUSHING BASIN @ EB 9+760.0, RT. NEW 150 x 30.0 m UNDERDRAIN CARRIER PIPE @ OUTLET
U 200	WB 9+760.0 - WB 9+880.0, RT.	NEW 150 x 127.0 m UND. W/FLUSHING BASINS @ WB 9+760.0, RT., WB 9+820.0, RT. NEW 150 x 30.0 m UNDERDRAIN CARRIER PIPE @ OUTLET

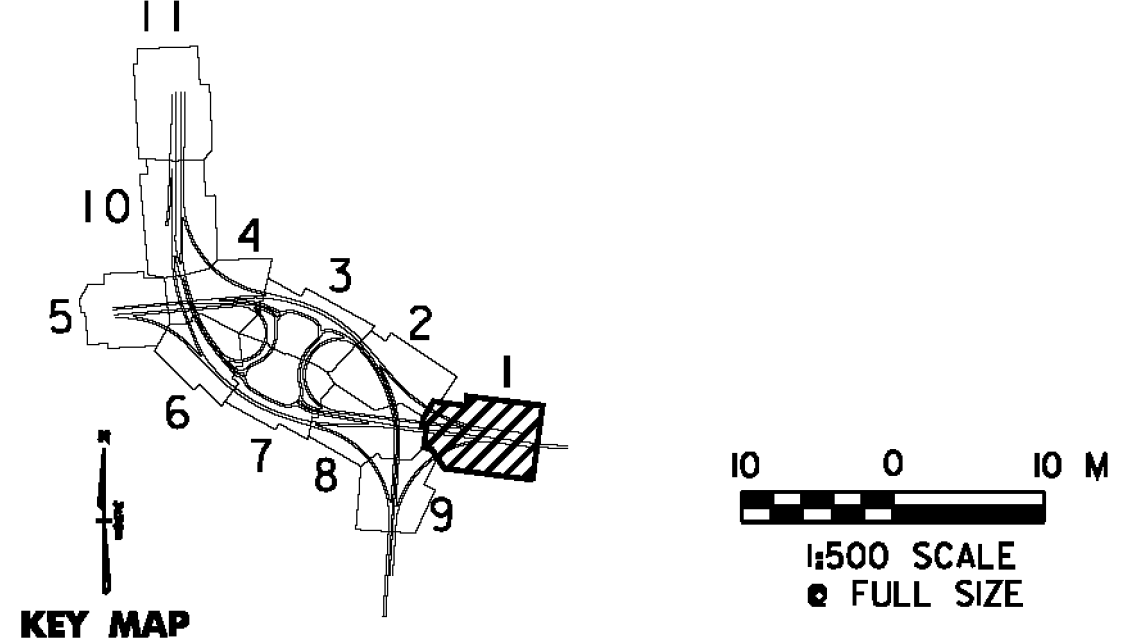
EXISTING DRAINAGE PIPES		
PIPE #	LOCATION	COMMENTS
700	STA. WB 9+661.2 - WB 9+724.8 RT.	REMOVE REMAINING PIPE (PARTIALLY REMOVED UNDER AC NH 019-1 (53))
701	STA. WB 9+724.8 - WB 9+792.9 RT.	REMOVE EXISTING PIPE AND INLET
702	STA. WB 9+790.3 - WB 9+792.9 LT.-RT.	REMOVE EXISTING PIPE AND INLET
703	STA. WB 9+792.9 - WB 9+862.6 RT.	ABANDON EXISTING PIPE AND INLET
704	STA. WB 9+863.9 - WB 9+862.6 RT.	ABANDON EXISTING PIPE AND INLET
705	STA. WB 9+862.6 - WB 9+928.4 RT.	ABANDON EXISTING PIPE AND INLET
338 - 347	DRAINAGE PIPES INSTALLED UNDER AC NH 019-1 (53) ALL PIPES AND STRUCTURES TO BE RETAINED	



**LEGEND**

- VEGETATED TREATMENT SWALE (SHOWING DIRECTION OF FLOW)
- STORM DRAIN (SHOWING DIRECTION OF FLOW)
- UNDERDRAIN (SHOWING DIRECTION OF FLOW)
- PRECAST REINFORCED CONCRETE DROP INLET WITH CAST IRON GRATE
- PRECAST REINFORCED CONCRETE CURB DI WITH CAST IRON GRATE
- PRECAST REINFORCED CONCRETE CATCH BASIN WITH CAST IRON GRATE
- UNDERDRAIN FLUSHING BASIN
- STORM DRAIN WITH HEADWALL
- STORM DRAIN WITH END SECTION/STONE PAD

- NOTES**
- PROPOSED STORMWATER AND UNDERDRAIN PIPES WHICH CROSS MATCHLINES ARE NOTED ON THE FIRST SHEET ON WHICH THEY APPEAR. CALL OUTS WILL SHOW UP ON EACH SHEET THAT THEY APPEAR.
  - FOR PIPES WITH DESIGNATION 7XX SEE EXISTING PIPE NOTES.
  - EXISTING PIPES WITH DESIGNATION 3XX ARE PIPES CONSTRUCTED UNDER AC NH 019-1 (53) AND ARE TO BE RETAINED.
  - EXISTING PIPES DESIGNATED FILL AND ABANDON ARE TO BE FILLED WITH FLOWABLE FILL PAID FOR AS ITEM 900.608 SPECIAL PROVISION (CONTROLLED DENSITY (FLOWABLE) FILL).
  - GUARDRAIL POST PLACEMENT SHALL BE DICTATED BY DRAINAGE STRUCTURES.



	PROJECT NAME: BENNINGTON	PROJECT NUMBER: NH 019-1(54)			
	FILE NAME: ...zd307c4drn.plans.ptf	DESIGN SUPERVISOR: GREG EDWARDS	DESIGNED BY: MARC FOISY	PLOT DATE: 3/16/2010	DRAWN BY: STANTEC
DRAINAGE PLANS DP-01		SHEET 127 OF 468			

3/16/2010 3:42:27 PM v:\1953\get\live\19530002\tr\anspor\ref\ion\dr\aw\ng\com\tr\cof\_4\p\ot\_ -files\z\6307\c4drn.plans.ppt