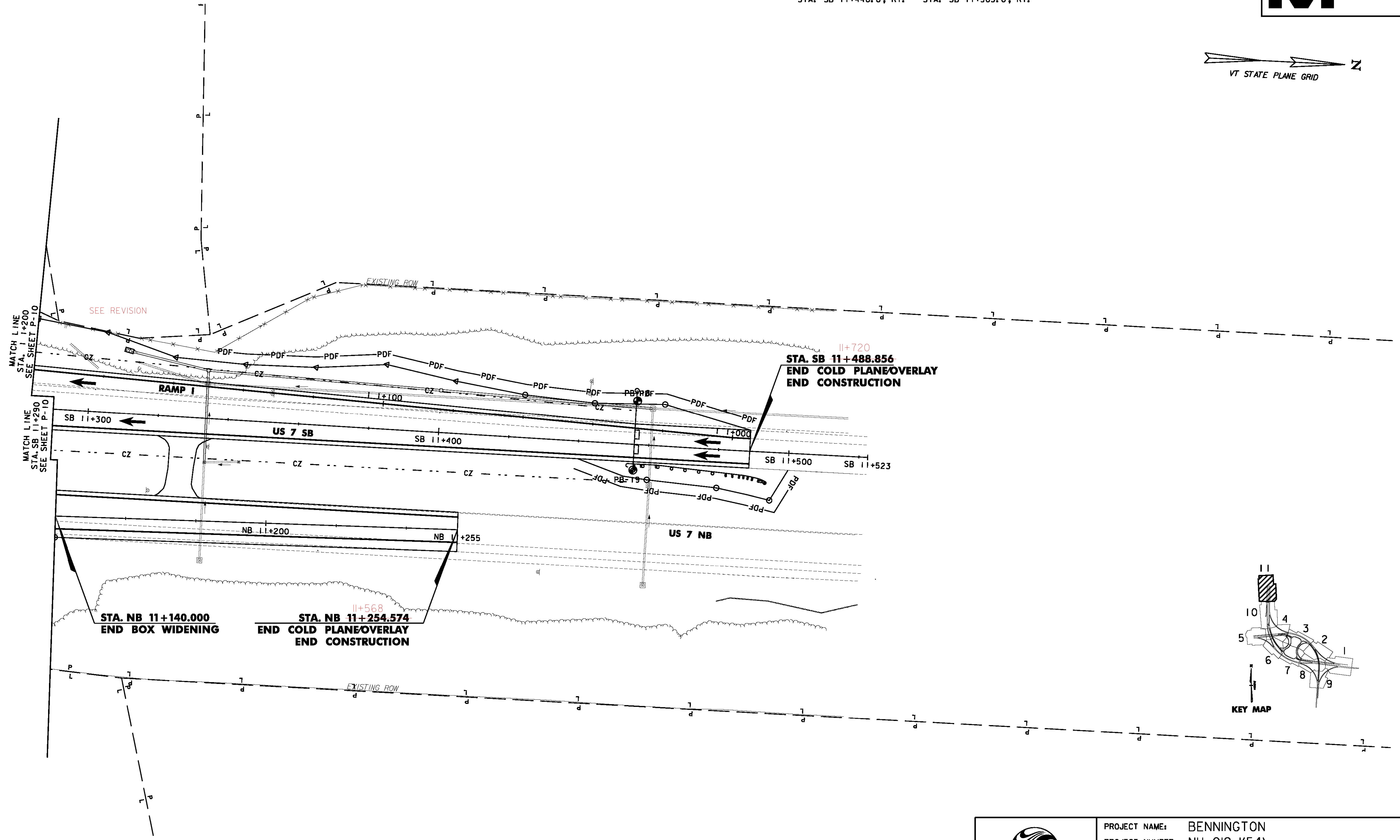


STEEL BEAM GUARDRAIL, GALVANIZED
STA. SB 11+455.0, 6.6m RT. - STA. SB 11+483.0, 7.9m RT.

MANUFACTURED TERMINAL SECTION, FLARED
STA. SB 11+483.0, 7.9m RT. - STA. SB 11+494.4, 7.9m RT.

ANCHOR FOR STEEL BEAM RAIL
STA. SB 11+455.0, 6.6m RT.

PROJECT DEMARCATION FENCE
STA. SB 11+336.3, LT. - STA. SB 11+490.0, LT.
STA. SB 11+440.0, RT. - STA. SB 11+503.0, RT.

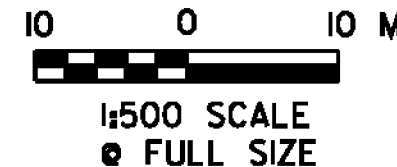
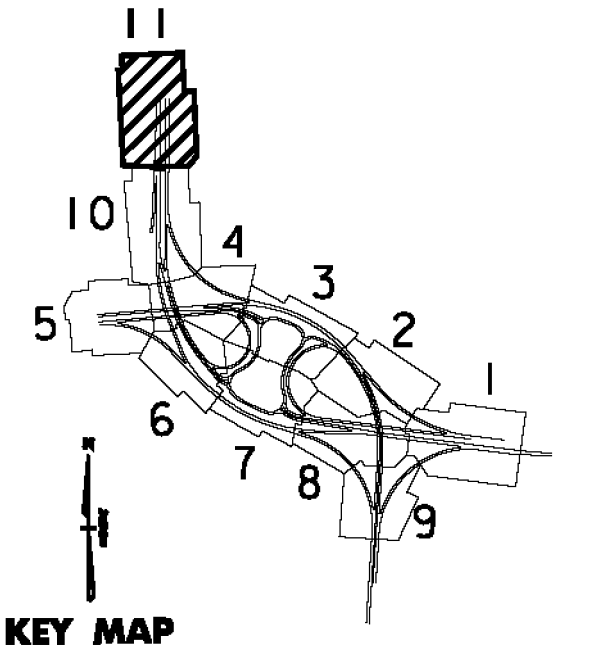


SEE REVISION

11+720
STA. SB 11+488.856
END COLD PLANE/OVERLAY
END CONSTRUCTION

STA. NB 11+140.000
END BOX WIDENING

11+568
STA. NB 11+254.574
END COLD PLANE/OVERLAY
END CONSTRUCTION



PROJECT NAME: BENNINGTON
PROJECT NUMBER: NH 019-(154)

FILE NAME: ...zd307c4gen_plans.ptf
DESIGN SUPERVISOR: GREG EDWARDS
DESIGNED BY: MARC FOISY
GENERAL PLAN P-11

PLOT DATE: 1/26/2010
DRAWN BY: STANTEC
CHECKED BY: GARY SANTY
SHEET 126 OF 468

1/26/2010 4:48:27 PM v:\1953\getlive\1953\0002\tr\anspor\ref\101\dr\aw\ng\con\tr\cst_4\p101 - files\z307c4gen_plans.p11