

**CURVE G-1**  
 CONSTRUCTED UNDER PROJECT  
 AC NH 019-1(53)  
 $\Delta = 243^\circ 46' 34.8''$  RT  
 $R = 90.000\text{m}$   
 $T = 382.923\text{m}$   
 $L = 382.923\text{m}$   
 BANK = N/A  
 PC STA. G 1+404.030  
 $N = 45307.6398$   
 $E = 442340.7677$   
 PT STA. G 1+786.953  
 $N = 45171.2878$   
 $E = 442271.7275$

**CURVE G-2**  
 $\Delta = 15^\circ 11' 45.7''$  RT  
 $R = 500.000\text{m}$   
 $T = 66.697\text{m}$   
 $L = 132.610\text{m}$   
 $E = 4.429\text{m}$   
 BANK = 0.028  
 PI STA. G 1+908.455  
 $N = 45275.1533$   
 $E = 442208.6830$   
 PC STA. G 1+841.758  
 $N = 45218.1379$   
 $E = 442243.2904$   
 PT STA. G 1+974.368  
 $N = 45339.2466$   
 $E = 442190.2307$

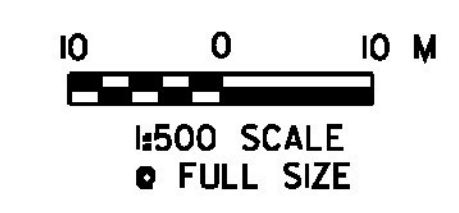
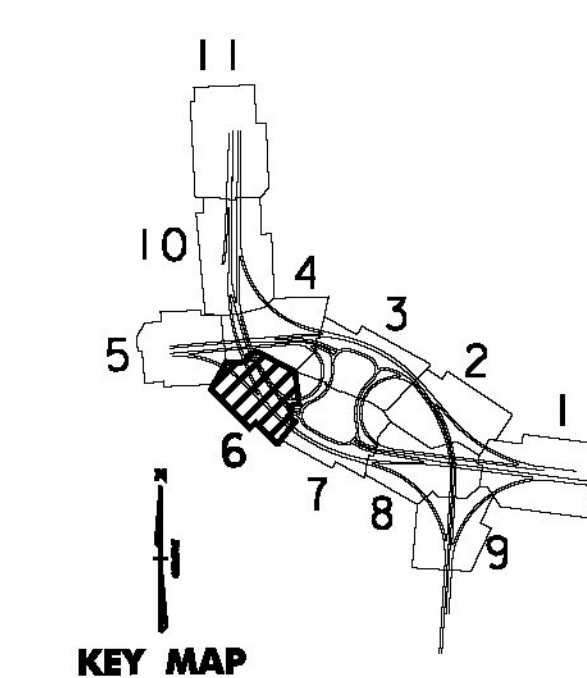
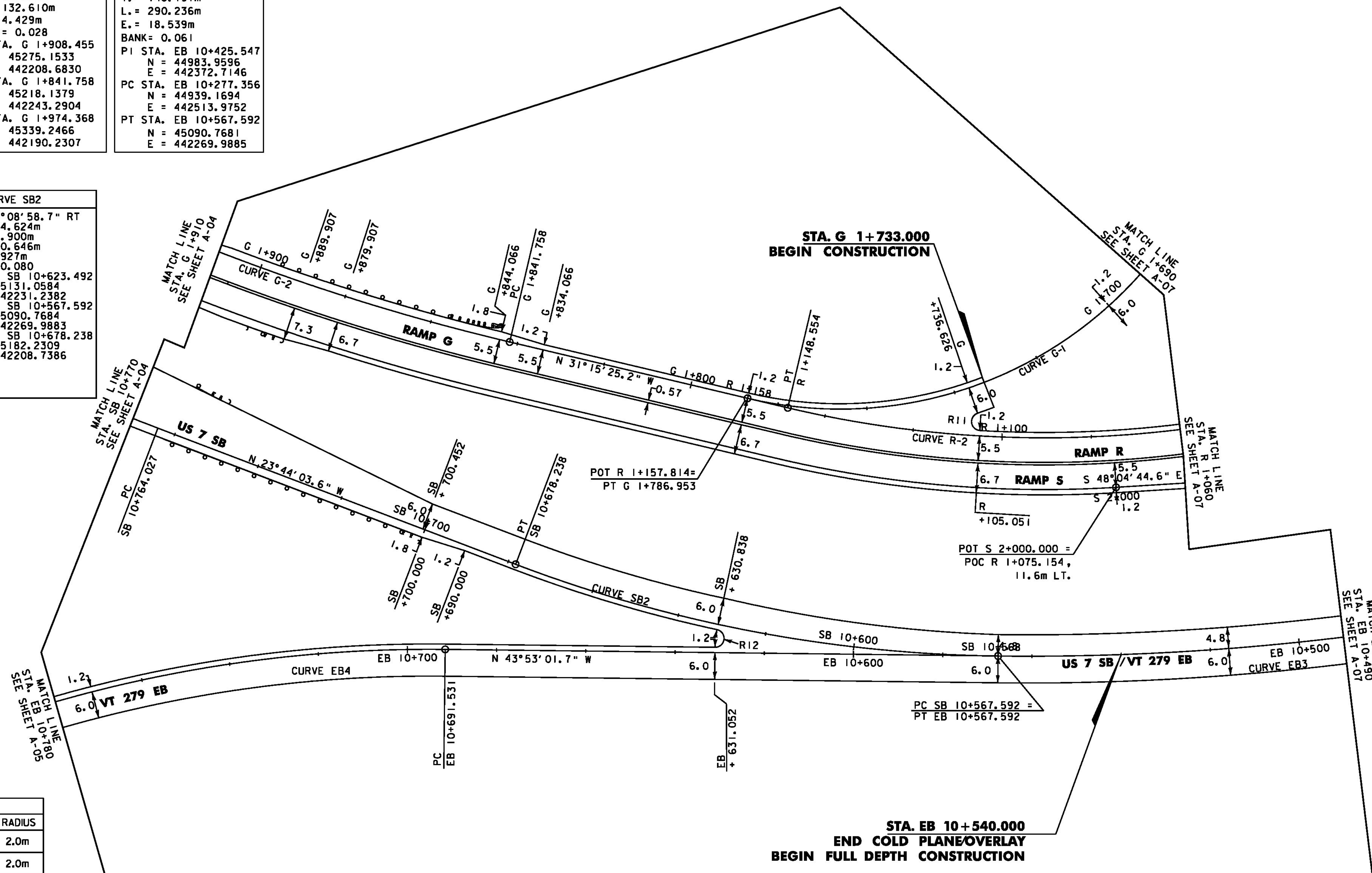
**CURVE EB3**  
 $\Delta = 28^\circ 31' 25.3''$  RT  
 $R = 583.000\text{m}$   
 $T = 148.191\text{m}$   
 $L = 290.236\text{m}$   
 $E = 18.539\text{m}$   
 BANK = 0.061  
 PI STA. EB 10+425.547  
 $N = 44983.9596$   
 $E = 442372.7146$   
 PC STA. EB 10+277.356  
 $N = 44939.1694$   
 $E = 442513.9752$   
 PT STA. EB 10+567.592  
 $N = 45090.7681$   
 $E = 442269.9885$

**CURVE EB4**  
 $\Delta = 51^\circ 08' 58.3''$  LT  
 $R = 304.000\text{m}$   
 $T = 145.488\text{m}$   
 $L = 271.389\text{m}$   
 $E = 33.020\text{m}$   
 BANK = 0.080  
 PI STA. EB 10+837.018  
 $N = 45284.9565$   
 $E = 442083.2224$   
 PC STA. EB 10+691.531  
 $N = 45180.0967$   
 $E = 442184.0743$   
 PT STA. EB 10+962.920  
 $N = 45272.1921$   
 $E = 441938.2957$

**CURVE SB2**  
 $\Delta = 20^\circ 08' 58.7''$  RT  
 $R = 314.624\text{m}$   
 $T = 55.900\text{m}$   
 $L = 110.646\text{m}$   
 $E = 4.927\text{m}$   
 BANK = 0.080  
 PI STA. SB 10+623.492  
 $N = 45131.0584$   
 $E = 442231.2382$   
 PC STA. SB 10+567.592  
 $N = 45090.7684$   
 $E = 442269.9883$   
 PT STA. SB 10+678.238  
 $N = 45182.2309$   
 $E = 442208.7386$

**CURVE R-2**  
 $\Delta = 23^\circ 12' 00.4''$  RT  
 $R = 250.000\text{m}$   
 $T = 51.318\text{m}$   
 $L = 101.230\text{m}$   
 $E = 5.213\text{m}$   
 BANK = 0.041  
 PI STA. R 1+098.642  
 $N = 45119.5028$   
 $E = 442303.1601$   
 PCC STA. R 1+047.324  
 $N = 45089.6711$   
 $E = 442344.9165$   
 PT STA. R 1+148.554  
 $N = 45163.3718$   
 $E = 442276.5324$

RADI TABLE				
	STATION	OFFSET	DIRECTION	RADIUS
R11	R 1+107.037	2.8m	RT	2.0m
R12	SB 10+631.734	3.2m	LT	2.0m



PROJECT NAME: BENNINGTON  
 PROJECT NUMBER: NH 019-1(54)  
 FILE NAME: ...zd307c4alg.plans.ptf  
 DESIGN SUPERVISOR: GREG EDWARDS  
 DESIGNED BY: MARC FOISY  
 ALIGNMENT PLAN A-06

PLOT DATE: 1/26/2010  
 DRAWN BY: STANTEC  
 CHECKED BY: GARY SANTY  
 SHEET 71 OF 468

1/26/2010 4:46:55 PM v:\953\active\953002\transportation\groming\comtr\act\_4\pilot\_files\zd307c4alg.plans.ptf