

CURVE WB2	
Δ = 60°56'56.9" LT	
R. = 475.000m	
T. = 279.513m	
L. = 505.288m	
E. = 76.137m	
BANK = 0.069	
PI STA. WB 10+418.729	
N = 45363.1568	
E = 442639.6366	
PC STA. WB 10+139.217	
N = 45131.6686	
E = 442796.2905	
PT STA. WB 10+644.504	
N = 45338.6190	
E = 442361.2032	

CURVE G-1 CONSTRUCTED UNDER PROJECT AC NH 019-K53	
Δ = 243°46'34.8" RT	
R. = 90.000m	
L. = 382.923m	
BANK = N/A	
PC STA. G 1+404.030	
N = 45307.6398	
E = 442340.7677	
PT STA. G 1+786.953	
N = 45171.2878	
E = 442271.7275	

CURVE G-2	
Δ = 15°11'45.7" RT	
R. = 500.000m	
T. = 66.697m	
L. = 132.610m	
E. = 4.429m	
BANK = 0.028	
PI STA. G 1+908.455	
N = 45275.1533	
E = 442208.6830	
PC STA. G 1+841.758	
N = 45218.1379	
E = 442243.2904	
PT STA. G 1+974.368	
N = 45339.2466	
E = 442190.2307	

CURVE G-3	
Δ = 16°24'28.6" RT	
R. = 500.000m	
T. = 72.086m	
L. = 143.186m	
E. = 5.170m	
BANK = 0.028	
PI STA. G 2+082.584	
N = 45443.2388	
E = 442160.2916	
PC STA. G 2+010.498	
N = 45373.9661	
E = 442180.2350	
PT STA. G 2+153.684	
N = 45515.3239	
E = 442160.7281	

CURVE Q1	
Δ = 49°15'16.4" RT	
R. = 100.000m	
T. = 45.841m	
L. = 85.965m	
E. = 10.006m	
BANK = 0.058	
PI STA. Q 1+088.218	
N = 45315.3796	
E = 442428.6451	
PC STA. Q 1+042.376	
N = 45311.3577	
E = 442382.9807	
PCC STA. Q 1+128.342	
N = 45283.4086	
E = 442461.4973	

CURVE NB2	
Δ = 73°57'12.6" RT	
R. = 315.000m	
T. = 237.169m	
L. = 406.581m	
E. = 79.302m	
BANK = 0.072	
PI STA. NB 10+855.809	
N = 45430.9404	
E = 442163.8165	
PC STA. NB 10+618.640	
N = 45363.9916	
E = 442391.3403	
PT STA. NB 11+025.220	
N = 45668.1052	
E = 442165.2653	

RADII TABLE				
	STATION	OFFSET	DIRECTION	RADIUS
R9	WB 10+721.909	8.0m	LT	2.0m
R9A	Q 1+043.699	3.2m	RT	2.0m

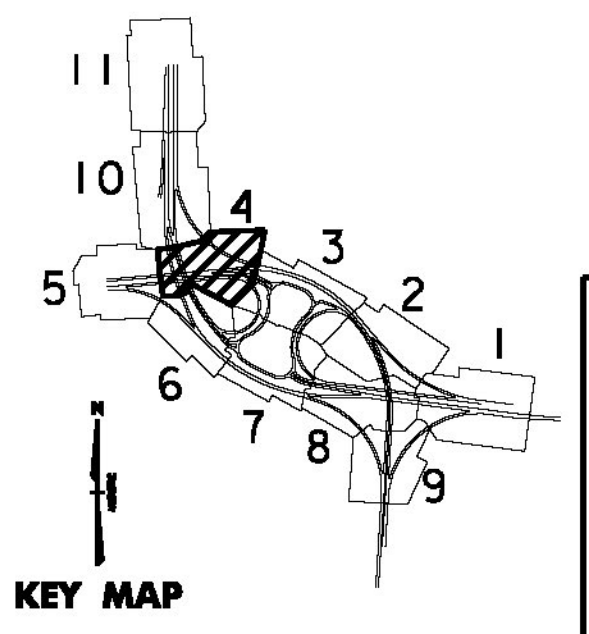
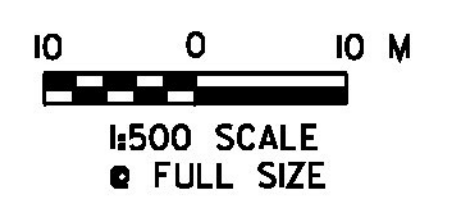
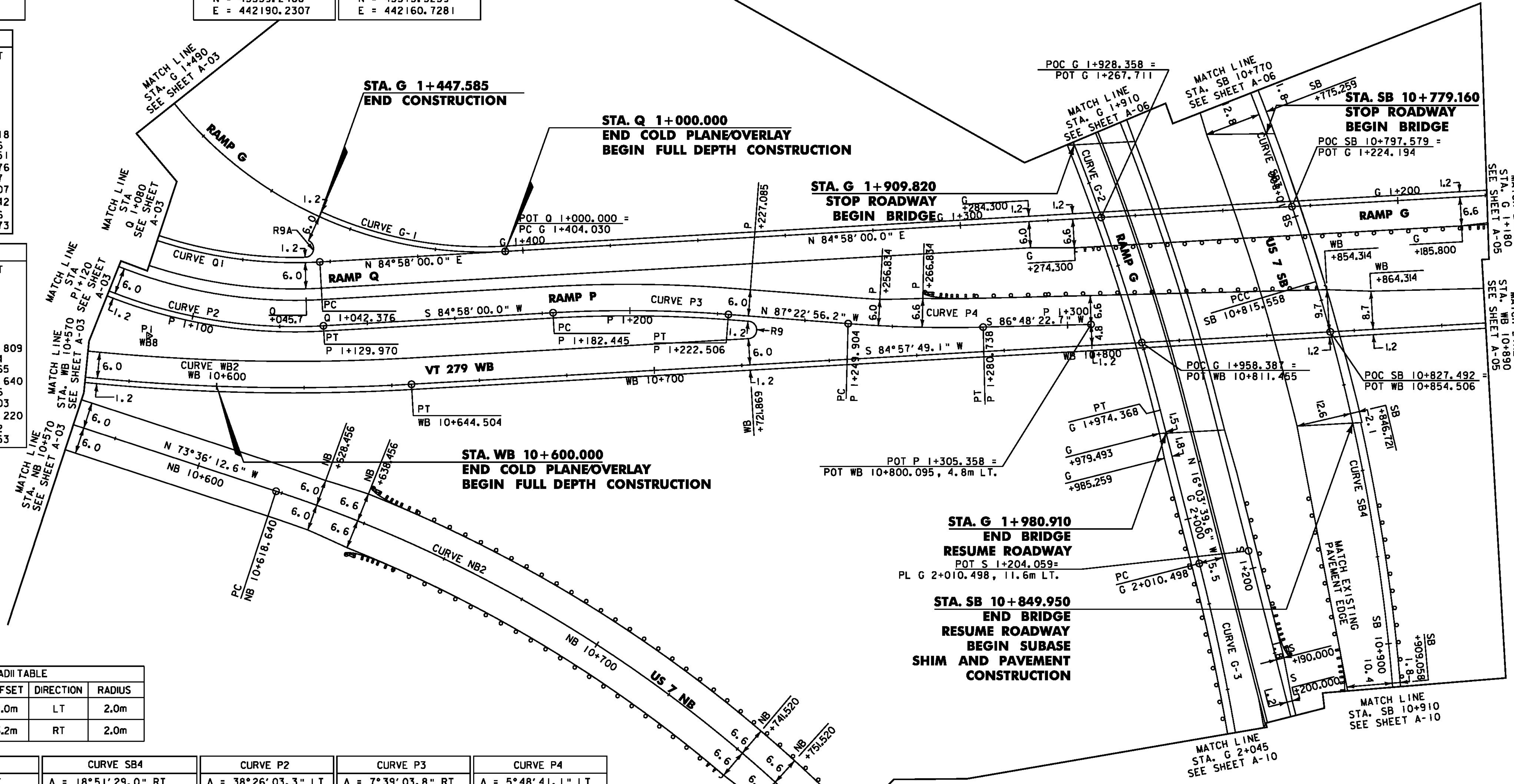
CURVE SB3	
Δ = 5°13'54.2" RT	
R. = 564.345m	
T. = 25.783m	
L. = 51.531m	
E. = 0.589m	
BANK = 0.062	
PI STA. SB 10+789.810	
N = 45284.3667	
E = 442163.8315	
PC STA. SB 10+764.027	
N = 45260.7641	
E = 442174.2091	
PCC STA. SB 10+815.558	
N = 45308.8173	
E = 442155.6492	

CURVE SB4	
Δ = 18°51'29.0" RT	
R. = 450.000m	
T. = 74.731m	
L. = 148.111m	
E. = 6.163m	
BANK = 0.071	
PI STA. SB 10+890.289	
N = 45379.6857	
E = 442131.9336	
PCC STA. SB 10+815.558	
N = 45308.8173	
E = 442155.6492	
PT STA. SB 10+963.669	
N = 45454.4155	
E = 442132.3974	

CURVE P2	
Δ = 38°26'03.3" LT	
R. = 114.600m	
T. = 39.946m	
L. = 76.874m	
E. = 6.763m	
BANK = 0.056	
PI STA. P 1+093.043	
N = 45329.4061	
E = 442421.4921	
PC STA. P 1+053.096	
N = 45307.4159	
E = 442454.8408	
PT STA. P 1+129.970	
N = 45325.9014	
E = 442381.6998	

CURVE P3	
Δ = 7°39'03.8" RT	
R. = 300.000m	
T. = 20.060m	
L. = 40.061m	
E. = 0.670m	
BANK = 0.038	
PI STA. P 1+202.505	
N = 45319.5375	
E = 442309.4446	
PC STA. P 1+182.445	
N = 45321.2975	
E = 442329.4275	
PT STA. P 1+222.506	
N = 45320.4537	
E = 442289.4053	

CURVE P4	
Δ = 5°48'41.1" LT	
R. = 304.000m	
T. = 15.430m	
L. = 30.834m	
E. = 0.391m	
BANK = 0.037	
PI STA. P 265.334	
N = 45322.4098	
E = 442246.6220	
PC STA. P 1+249.904	
N = 45321.7050	
E = 442262.0362	
PT STA. P 1+280.738	
N = 45321.5501	
E = 442231.2156	



PROJECT NAME:	BENNINGTON	PLOT DATE:	3/16/2010
PROJECT NUMBER:	NH 019-K(54)	DRAWN BY:	STANTEC
FILE NAME:	...z307c4a9.plans.ptf	DESIGNED BY:	MARC FOISY
DESIGN SUPERVISOR:	GREG EDWARDS	CHECKED BY:	GARY SANTY
ALIGNMENT PLAN A-04			SHEET 69 OF 468

3/16/2010 10:26:20 AM v:\b3\3\cvt\live\109\10902\transportation\grom\m\acomp\tracet_4\blot_files\z307c4a9.plans.ptf