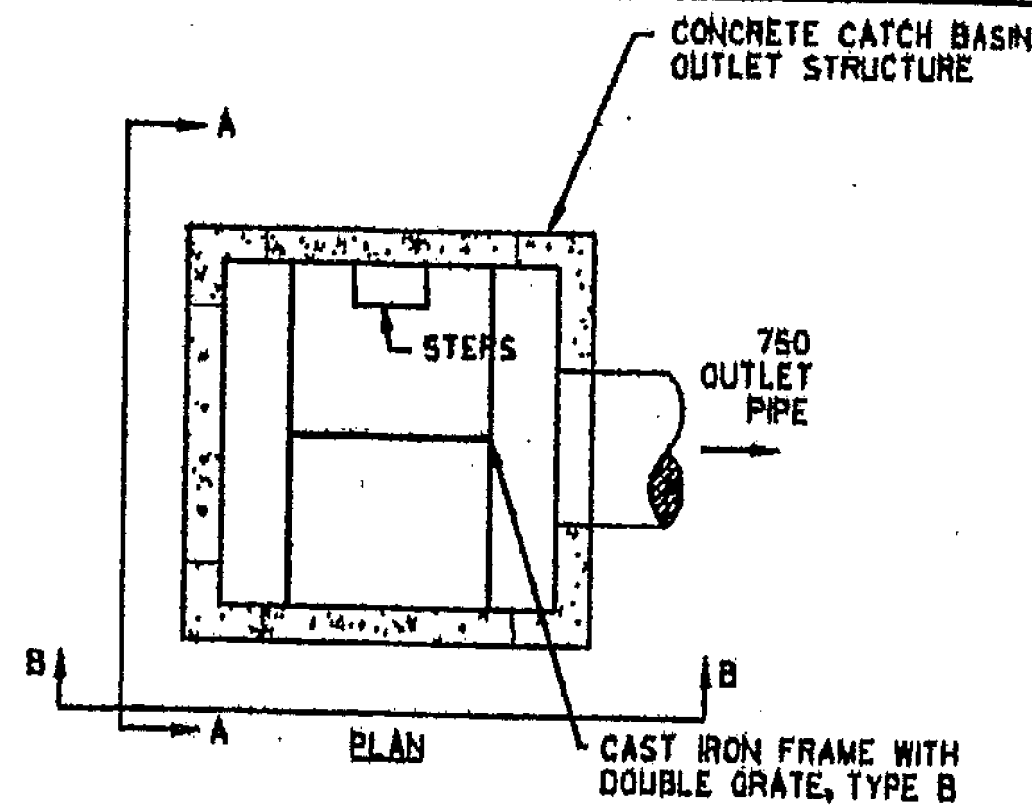


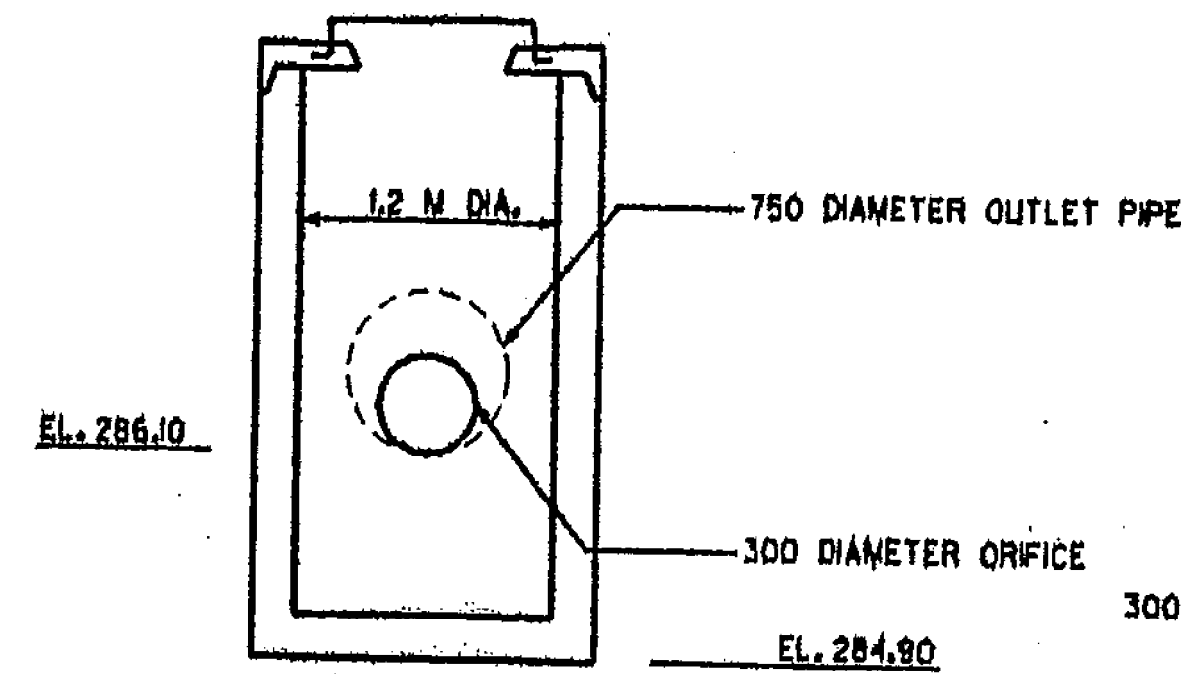


**GENERAL NOTES:**

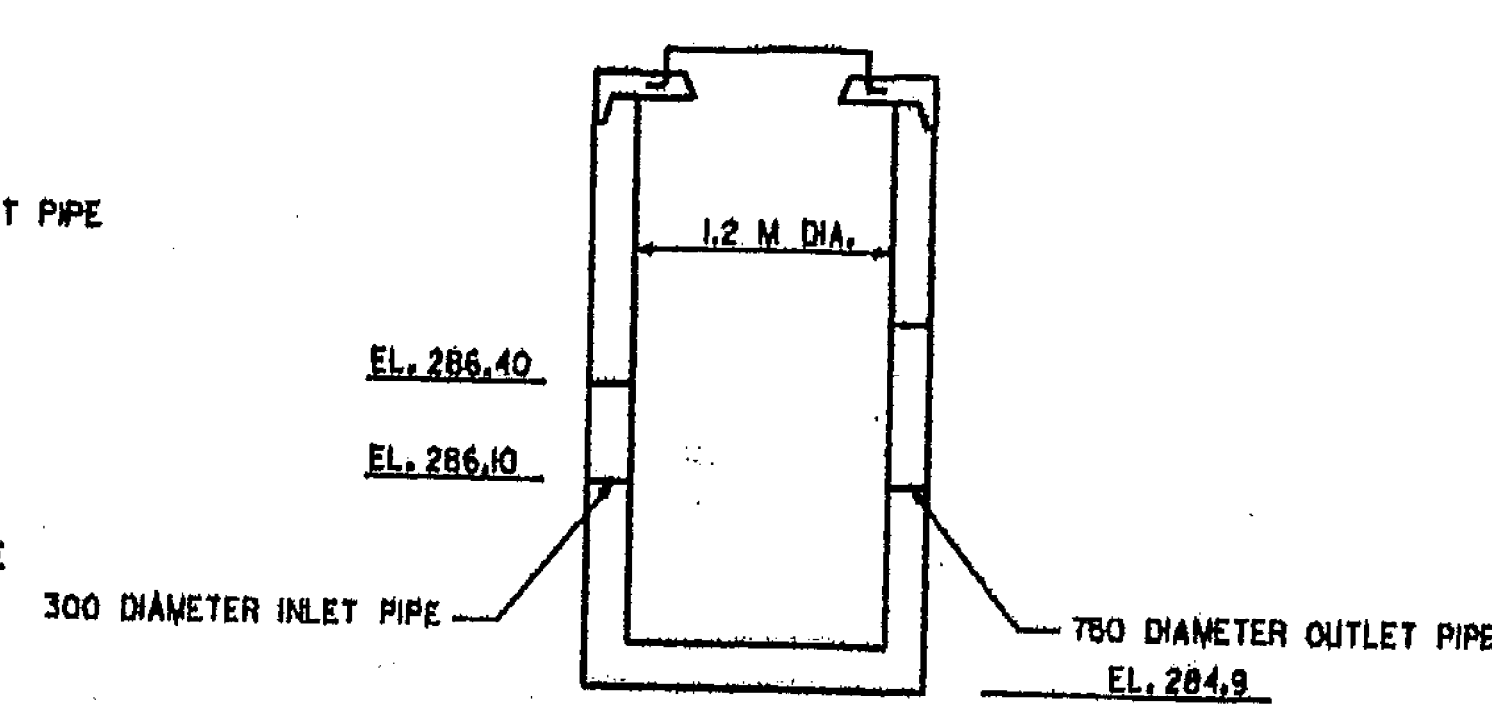
1. THE DRY POND AREA SHALL BE CLEARED OF TREES, STUMPS, BOULDERS AND SOD TO A MINIMUM DEPTH OF 300 BELOW FINAL GRADE.
2. CONCRETE CATCH BASIN DRY POND OUTLET TO BE CONSTRUCTED WITH HOLE SIZES AND SPACING AS SHOWN WITH ANY FIELD ADJUSTMENTS APPROVED BY THE ENGINEER. HOLES SHALL BE CAST WITH THE SECTION TO AVOID POSSIBLE RUST STAINS FROM EXPOSED REINFORCEMENT.
3. SEED AND MULCH ALL EARTH SLOPES WITHIN 24 HOURS OF COMPLETION OF FINAL GRADING. STABILIZE THE INLET AREA WITH REQUIRED EROSION CONTROL MEASURES.
4. REMOVE ACCUMULATED SEDIMENT FROM POND AT COMPLETION OF PROJECT, AT THE DIRECTION OF THE ENGINEER.
5. ANTI-SEEP COLLARS SHALL BE INSTALLED AS SHOWN TO RESIST FLOW ALONG THE OUTSIDE OF THE PIPE. COLLARS SHOULD PROJECT A MINIMUM OF 0.6 M FROM THE PIPE. MAXIMUM SPACING OF COLLARS IS 6 M.
6. OUTLET STRUCTURE TO BE PAID FOR AS ITEM 604.10 CONCRETE CATCH BASIN W/ 2 TYPE B GRATES.



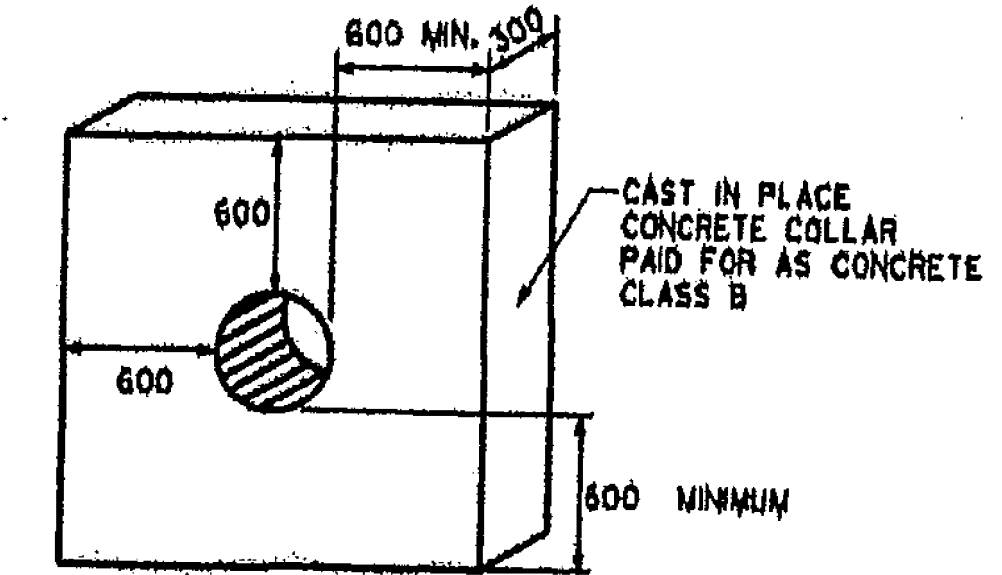
**CONCRETE CATCH BASIN DRY POND OUTLET (TOP VIEW)**  
NOT TO SCALE



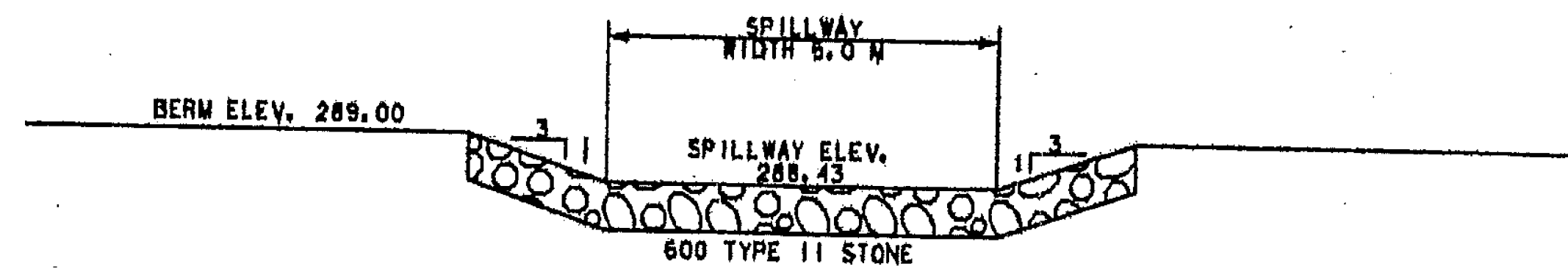
**CONCRETE CATCH BASIN DRY POND OUTLET (FRONT VIEW A-A)**  
NOT TO SCALE



**CONCRETE CATCH BASIN DRY POND OUTLET (SIDE VIEW B-B)**  
NOT TO SCALE

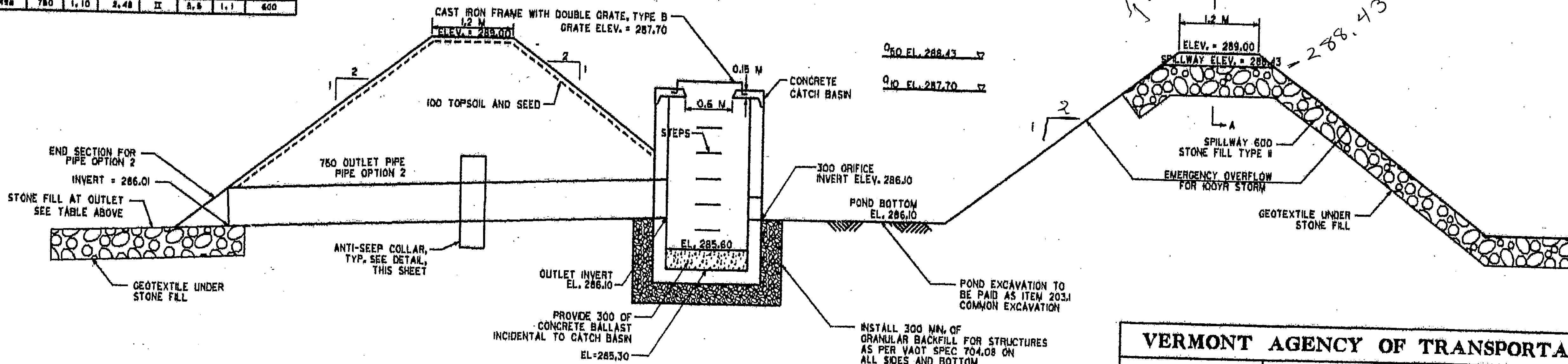


**ANTI-SEEP COLLAR**  
NOT TO SCALE



**A-A**

STONE OUTLET PROTECTION							
OUTLET PIPE NO.	PIPE SIZE (mm)	FLOW (cms)	VELOCITY (m/s)	STONE TYPE	PAD LENGTH (m)	PAD WIDTH (m)	PAD THICKNESS (mm)
648a	750	1.10	2.48	II	2.8	1.1	600



**DRY POND SECTION**  
NOT TO SCALE

**VERMONT AGENCY OF TRANSPORTATION**



PROJECT NAME: BENNINGTON  
 PROJECT NUMBER: AC NH 019-K52  
 FILE NAME: ...plot\_files\zd307c2det.dwg.plt PLOT DATE: 10/30/2008  
 DESIGN SUPERVISOR: GREG EDWARDS DRAWN BY: STANTEC  
 DESIGNED BY: MARC FOISY CHECKED BY: GARY SANTY  
 STORMWATER MANAGEMENT DETAILS SHEET OF 267