

**NEW DRAINAGE STRUCTURES**

STRUCTURE #	LOCATION	COMMENTS
D1401	NB 8+332.0 LT	1200x1800 TYPE A GRATE (2)
D1419	CH 1+397.0 RT	TYPE A GRATE
PRCCD1427	NB 8+370.0 LT	PRCCD1

**NEW DRAINAGE PIPES**

PIPE #	LOCATION	COMMENTS
401	NB 8+332.0-NB 8+360.0 LT	900 X 24.8 m PIPE OPTION 2 CONST. STONE FILL TYPE II AT OUTLET
419	CH 1+354.0 - CH 1+397.0 RT	450 X 41.8 m PIPE OPTION 3
427	NB 8+378.5 LT	300 X 15.4 m OPTION 2 SLOPE DRAIN CONST. 600mm PIPE COUPLING BANDS CONST. END SECTION AT OUTLET CONST. STONE FILL TYPE II AT OUTLET
CV436	CH 1+426.0-CH 1+436.0 RT	450 X 10.0 m PIPE OPTION 2 CONST. END SECTIONS AT INLET AND OUTLET
CV437	CH 1+419.5 LT - RT.	600 X 22.4 m PIPE OPTION 2 CONST. STONE FILL TYPE I AT OUTLET CONST. END SECTIONS AT INLET AND OUTLET

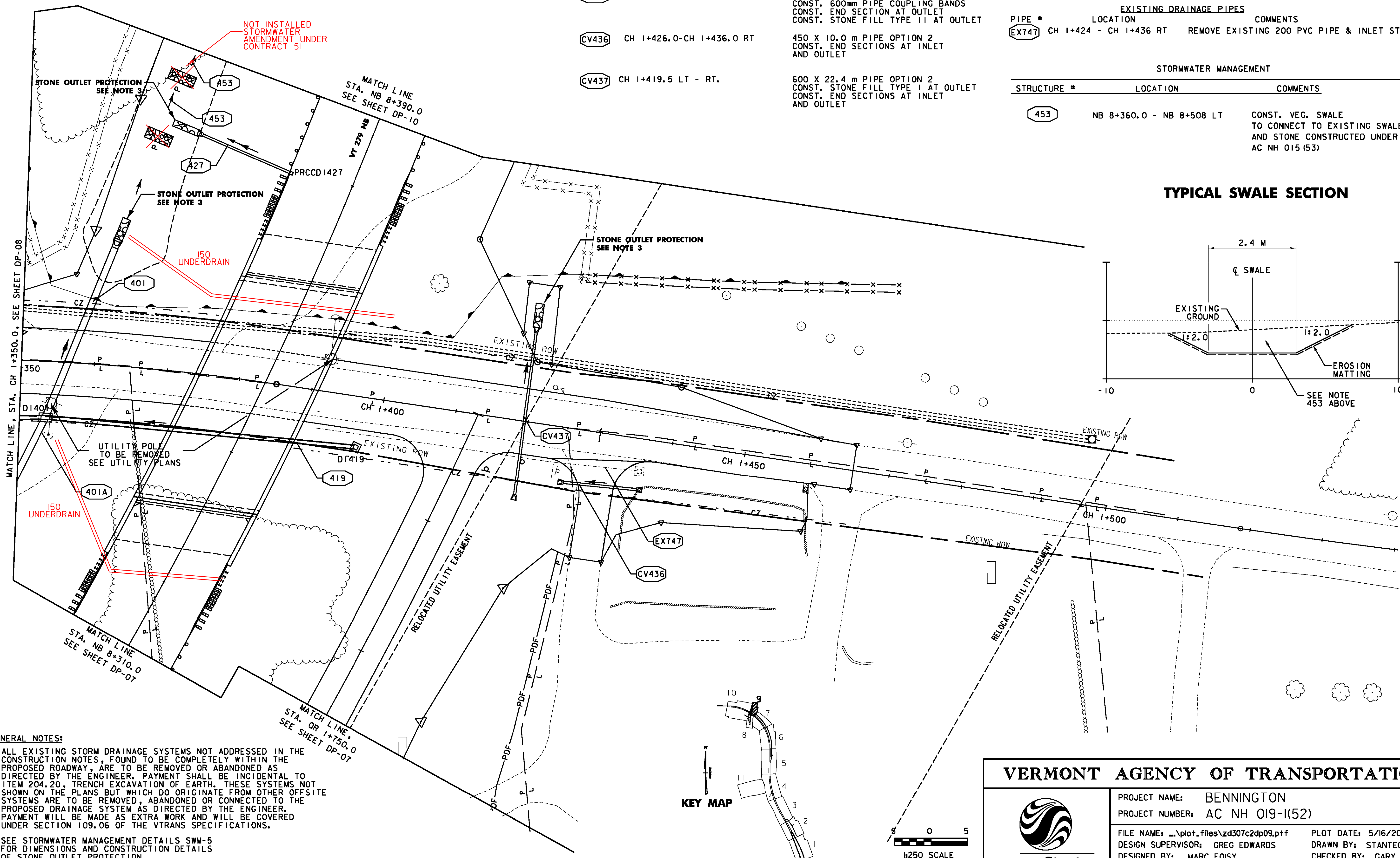
**EXISTING DRAINAGE PIPES**

PIPE #	LOCATION	COMMENTS
EX747	CH 1+424 - CH 1+436 RT	REMOVE EXISTING 200 PVC PIPE & INLET STRUCTURE

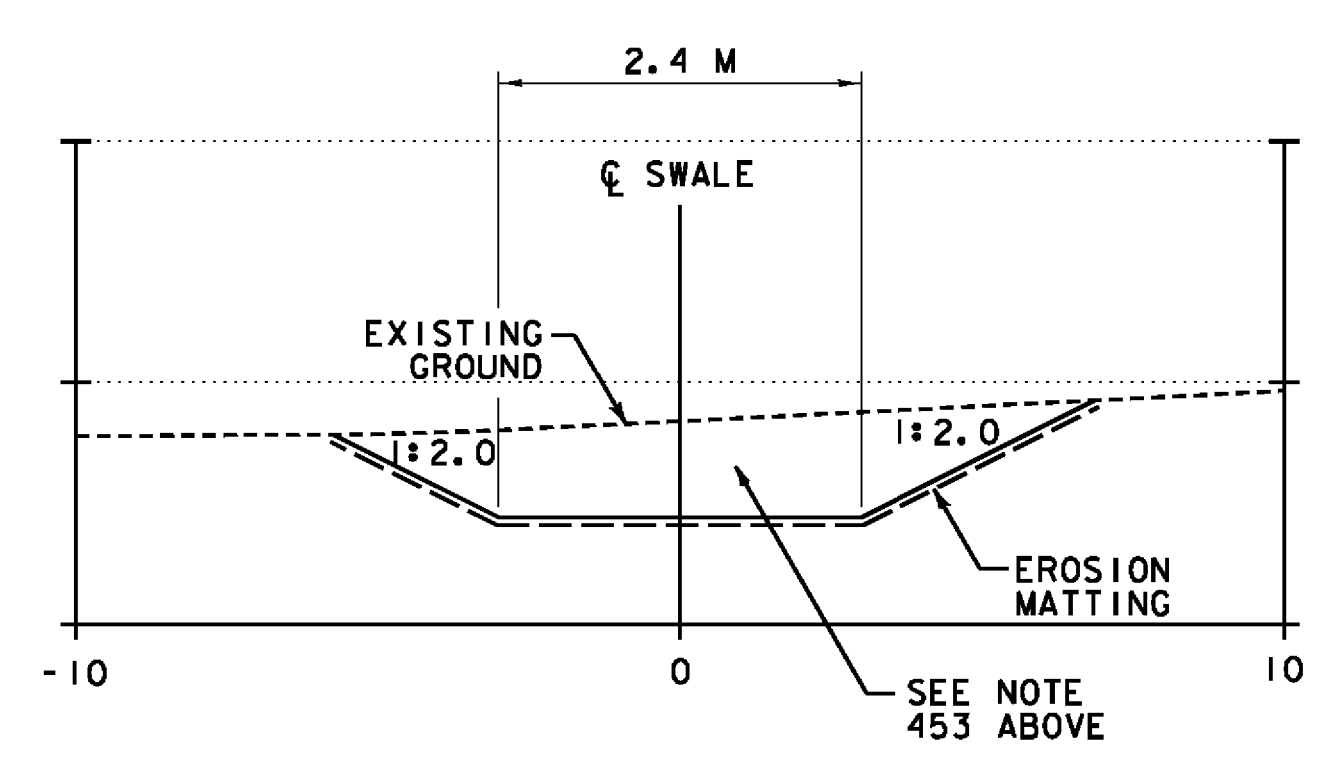
~~PERMANENT STONE CHECK DAMS, TYPE I  
STA. NB 8+375.133, 27.1m LT. STA. NB 8+384.213, 27.2m LT.~~

**STORMWATER MANAGEMENT**

STRUCTURE #	LOCATION	COMMENTS
453	NB 8+360.0 - NB 8+508 LT	CONST. VEG. SWALE TO CONNECT TO EXISTING SWALE AND STONE CONSTRUCTED UNDER AC NH 015 (53)



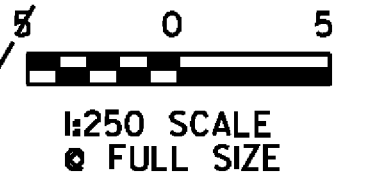
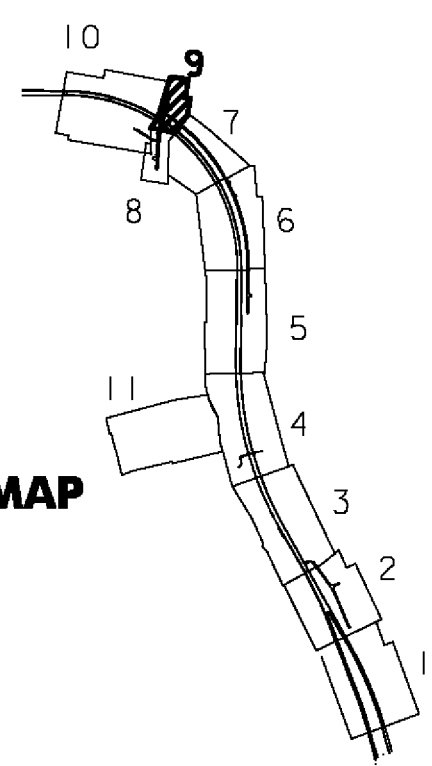
**TYPICAL SWALE SECTION**



**GENERAL NOTES:**

- ALL EXISTING STORM DRAINAGE SYSTEMS NOT ADDRESSED IN THE CONSTRUCTION NOTES, FOUND TO BE COMPLETELY WITHIN THE PROPOSED ROADWAY, ARE TO BE REMOVED OR ABANDONED AS DIRECTED BY THE ENGINEER. PAYMENT SHALL BE INCIDENTAL TO ITEM 204.20, TRENCH EXCAVATION OF EARTH. THESE SYSTEMS NOT SHOWN ON THE PLANS BUT WHICH DO ORIGINATE FROM OTHER OFFSITE SYSTEMS ARE TO BE REMOVED, ABANDONED OR CONNECTED TO THE PROPOSED DRAINAGE SYSTEM AS DIRECTED BY THE ENGINEER. PAYMENT WILL BE MADE AS EXTRA WORK AND WILL BE COVERED UNDER SECTION 109.06 OF THE VTRANS SPECIFICATIONS.
- SEE STORMWATER MANAGEMENT DETAILS SWM-5 FOR DIMENSIONS AND CONSTRUCTION DETAILS OF STONE OUTLET PROTECTION.

**KEY MAP**



**VERMONT AGENCY OF TRANSPORTATION**



PROJECT NAME: BENNINGTON	PLOT DATE: 5/16/2011
PROJECT NUMBER: AC NH 019-1(52)	DRAWN BY: STANTEC
FILE NAME: ...plot.files\zd307c2dp09.ppf	DESIGNED BY: GARY SANYT
DESIGN SUPERVISOR: GREG EDWARDS	CHECKED BY: GARY SANYT
DESIGNED BY: MARC FOISY	SHEET 89 OF 267
<b>DRAINAGE PLAN DP-09</b>	