

NEW DRAINAGE STRUCTURES		
STRUCTURE #	LOCATION	COMMENTS
D1403	NB 8+200.0 LT	1200x1800 TYPE B GRATE (1)
D1404	NB 8+125.0 LT	1200x1800 TYPE B GRATE (1)
D1421	NB 8+200.0 RT	TYPE B GRATE
D1422	NB 8+125.0 RT	TYPE B GRATE
PRCCD1428	NB 8+309.6 RT	PRCCDI
PRCCD1429	NB 8+260.0 LT	PRCCDI
MH430	NB 8+187.0 RT	COVER ("STORM" CAST INTO TOP SURFACE)

STORMWATER MANAGEMENT		
STRUCTURE #	LOCATION	COMMENTS
402	NB 8+240.0 - NB 8+310.7 LT	CONST. STONE LINED DITCH, SWM-1

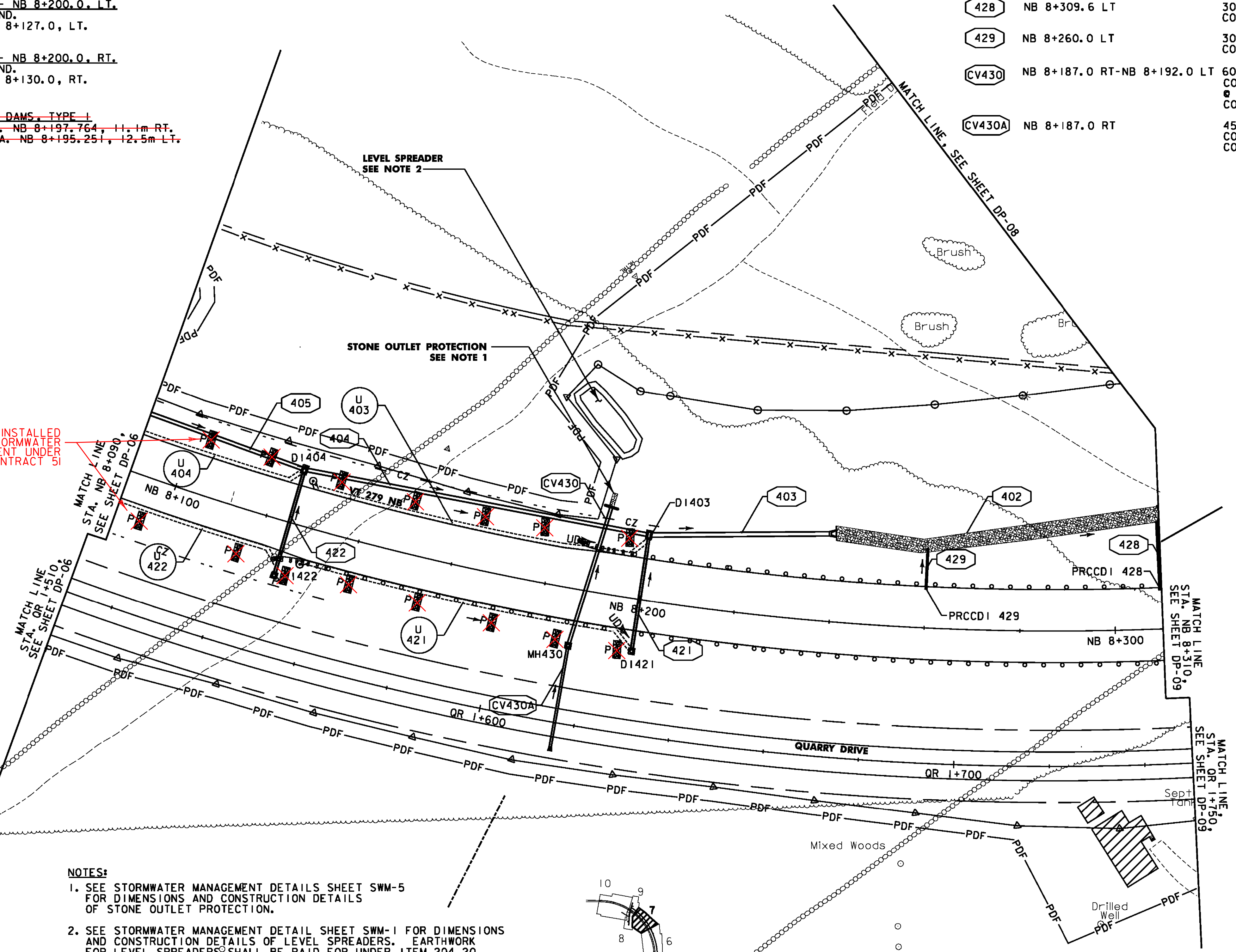
NEW DRAINAGE PIPES		
PIPE #	LOCATION	COMMENTS
403	NB 8+200.0-NB 8+240.0 LT	900 X 38.9 m PIPE OPTION 2 CONST. END SECTION AT OUTLET
404	NB 8+125.0 - NB 8+200.0 LT	750 X 72.8 m PIPE OPTION 2
421	NB 8+200.0 LT-RT	450 X 23.8 m PIPE OPTION 3
422	NB 8+125.0 LT-RT	450 X 22.3 m PIPE OPTION 3
428	NB 8+309.6 LT	300 X 17.2 m OPTION 2 SLOPE DRAIN CONST. 600mm PIPE COUPLING BANDS
429	NB 8+260.0 LT	300 X 7.5 m OPTION 2 SLOPE DRAIN CONST. 600 PIPE COUPLING BANDS
CV430	NB 8+187.0 RT-NB 8+192.0 LT	600 X 30.3 m PIPE OPTION 2 CONST. REINFORCED CONCRETE HEADWALL OUTLET CONST. STONE FILL, TYPE II OUTLET CONST. LEVEL SPREADER
CV430A	NB 8+187.0 RT	450 X 21.2 m PIPE OPTION 2 CONST. 600 PIPE COUPLING BANDS CONST. END SECTION AT INLET

- UNDERDRAIN**
- U 403 CONST. 6 NB 8+125.0 - NB 8+200.0, LT.
NEW 150 mm x 67.6 m UND.
W/FLUSHING BASIN @ NB 8+127.0, LT.
 - U 421 CONST. 6 NB 8+130.0 - NB 8+200.0, RT.
NEW 150 mm x 69.1 m UND.
W/FLUSHING BASIN @ NB 8+130.0, RT.

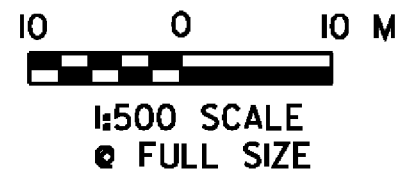
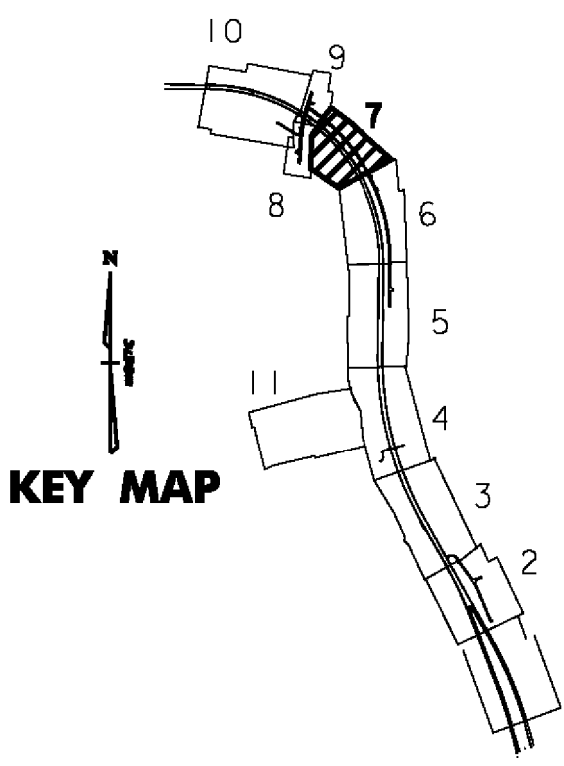
PERMANENT STONE CHECK DAMS, TYPE I

STA. NB 8+094.519, 9.2m RT. STA. NB 8+197.764, 11.1m RT.
 STA. NB 8+103.258, 11.7m LT. STA. NB 8+195.251, 12.5m LT.

NOT INSTALLED
STORMWATER
AMENDMENT UNDER
CONTRACT '51



- NOTES:**
- SEE STORMWATER MANAGEMENT DETAILS SHEET SWM-5 FOR DIMENSIONS AND CONSTRUCTION DETAILS OF STONE OUTLET PROTECTION.
 - SEE STORMWATER MANAGEMENT DETAIL SHEET SWM-1 FOR DIMENSIONS AND CONSTRUCTION DETAILS OF LEVEL SPREADERS. EARTHWORK FOR LEVEL SPREADERS SHALL BE PAID FOR UNDER ITEM 204.20 (TRENCH EXCAVATION).
 - PIPE STATIONING REFLECTS BREAKS AT SHEET MATCHLINES. PIPE LENGTHS REFLECT ACTUAL PIPE SEGMENTS & MATCH THE SUMMARY SHEETS.
 - FOR TEMPORARY SEDIMENT BASIN # 1 DETAILS AND PIPE NOTES SEE EROSION PREVENTION AND SEDIMENT CONTROL DETAILS ECD-12 AND ECD-13



VERMONT AGENCY OF TRANSPORTATION



PROJECT NAME: BENNINGTON
 PROJECT NUMBER: AC NH 019-1(52)
 FILE NAME: ...plot_files\zd307c2dp07.ppt PLOT DATE: 5/16/2011
 DESIGN SUPERVISOR: GREG EDWARDS DRAWN BY: STANTEC
 DESIGNED BY: MARC FOISY CHECKED BY: GARY SANTY
DRAINAGE PLAN DP-07 SHEET 87 OF 267

V:\953\loc1\953\002\1\transportation\drainage\constr\001_2\plot_files\zd307c2dp07.ppt