

STORMWATER MANAGEMENT		
STRUCTURE #	LOCATION	COMMENTS
524	NB 6+690.0 - NB 7+140.0 RT	CONST. INTERCEPTOR DITCH (SEE NOTE 1) CONST. LEVEL SPREADER AT STA. NB 6+690 (SEE SWM-1)
525	VB 1+100.0 RT	CONSTRUCT STONE FILL TYPE II AT SPILLWAY OUTLET
526	VB 1+107.0 - VB 1+114.0 LT	CONSTRUCT STONE LINED DITCH WITH STONE FILL TYPE II.

NEW DRAINAGE STRUCTURES			
STRUCTURE #	LOCATION	COMMENTS	
CB503	NB 6+595.0 RT	TYPE A GRATE	
D1504	NB 6+670.0 RT	TYPE A GRATE	
D1505	NB 6+740.0 RT	TYPE A GRATE	
D1518	NB 6+595.0 LT	TYPE A GRATE	
D1519	NB 6+670.0 LT	TYPE A GRATE	

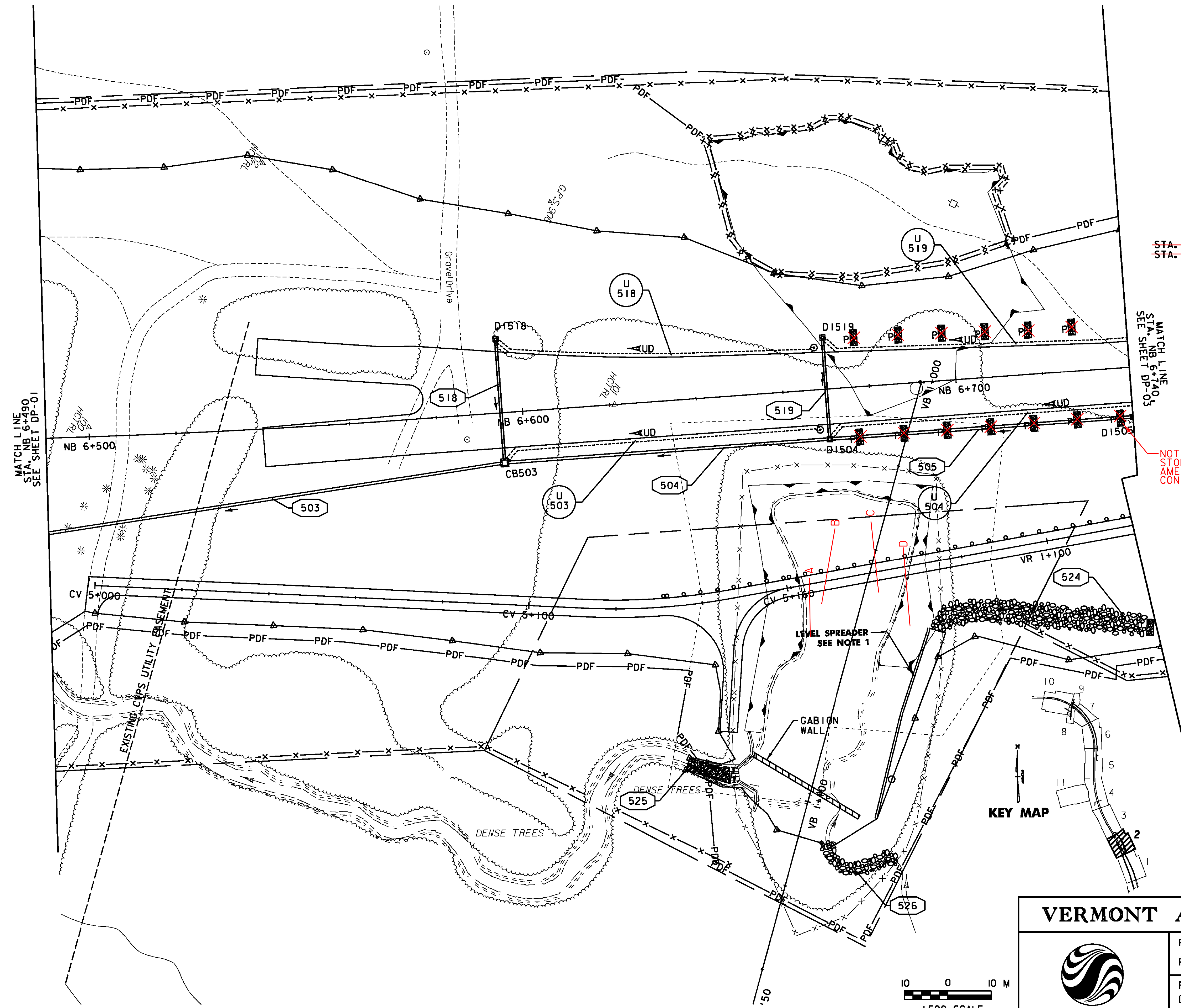
NEW DRAINAGE PIPES			
PIPE #	LOCATION	COMMENTS	
504	NB 6+595.0 - NB 6+670.0 RT	600 X 74.1 m PIPE OPTION 2	
505	NB 6+670.0 - NB 6+740.0 RT	600 X 69.4 m PIPE OPTION 2	
518	NB 6+595.0 LT-RT	450 X 27.6 m PIPE OPTION 3	
519	NB 6+670.0 LT-RT	450 X 22.9 m CPEP (SL)	

UNDERDRAIN	
U 503	CONST. & NB 6+595.0 - NB 6+670.0 RT. NEW 150 mm x 69.0 m UND. W/FLUSHING BASIN @ 6+668.0, RT.
U 504	CONST. & NB 6+670.0 - NB 6+760.0 RT. NEW 150 mm x 84.0 m UND. W/FLUSHING BASIN SEE DP-03
U 518	CONST. & NB 6+595.0 - NB 6+670.0 LT. NEW 150 mm x 69.2 m UND. W/FLUSHING BASIN @ NB 6+668.0, LT.
U 519	CONST. & NB 6+670.0 - NB 7+040.0 LT. NEW 150 mm x 383.2 m UND. W/FLUSHING BASINS SEE DP-03

PERMANENT STONE CHECK DAMS - TYPE I
~~STA. NB 6+676.185, 11.5m RT. STA. NB 6+737.874, 11.6m RT.~~
~~STA. A 1+700.294, 5.5m LT. STA. A 1+762.096, 6.3m LT.~~

UNDERDRAIN ADDED TO CONTRACT		
	INV. INLET	INV. OUTLET
A)	NB 6+664.5 - 56.50m RT ELEV. 290.22	NB 6+666.9 - 42.8m RT ELEV.
B)	NB 6+665.4 - 49.23m RT ELEV. 289.13	NB 6+670.5 - 31.5m RT ELEV. 288.93
C)	NB 6+679.5 - 48.00m RT ELEV. 289.8	NB 6+679.8 - 31.4m RT ELEV. 289.42
D)	NB 6+686.0 - 55.79m RT ELEV.	NB 6+686.67 - 37.5m RT ELEV. 290.65

NOT INSTALLED
STORMWATER
AMENDMENT UNDER
CONTRACT 51



MATCH LINE
STA. NB 6+740.0
SEE SHEET DP-03

MATCH LINE
STA. NB 6+490
SEE SHEET DP-01

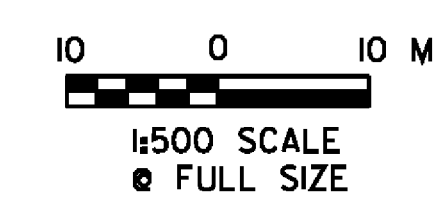
KEY MAP

NOTES:
 1. SEE STORMWATER MANAGEMENT DETAIL SHEET SWM-1 FOR DIMENSIONS AND CONSTRUCTION DETAILS FOR INTERCEPTOR DITCH AND LEVEL SPREADER. EARTHWORK FOR INTERCEPTOR DITCH AND LEVEL SPREADER SHALL BE PAID FOR UNDER ITEM 204.20 (TRENCH EXCAVATION).

VERMONT AGENCY OF TRANSPORTATION



PROJECT NAME: BENNINGTON
 PROJECT NUMBER: AC NH 019-1(52)
 FILE NAME: ...plot_files\zd307c2dp02.ppt
 DESIGN SUPERVISOR: GREG EDWARDS
 DESIGNED BY: MARC FOISY
 DRAINAGE PLAN DP-02
 PLOT DATE: 5/16/2011
 DRAWN BY: STANTEC
 CHECKED BY: GARY SANTY
 SHEET 82 OF 267



V:\1953\active\19530002\transportation\drainage\conform\01.dwg, plot_files\zd307c2dp02.ppt