

DRIVE GATE FOR WOVEN WIRE FENCE
 STA. DR 1+012.033, 2.5m LT. - 2.5m RT.

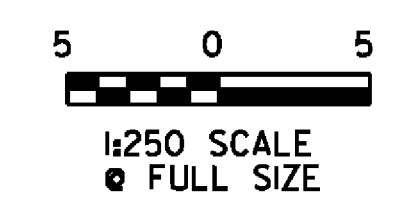
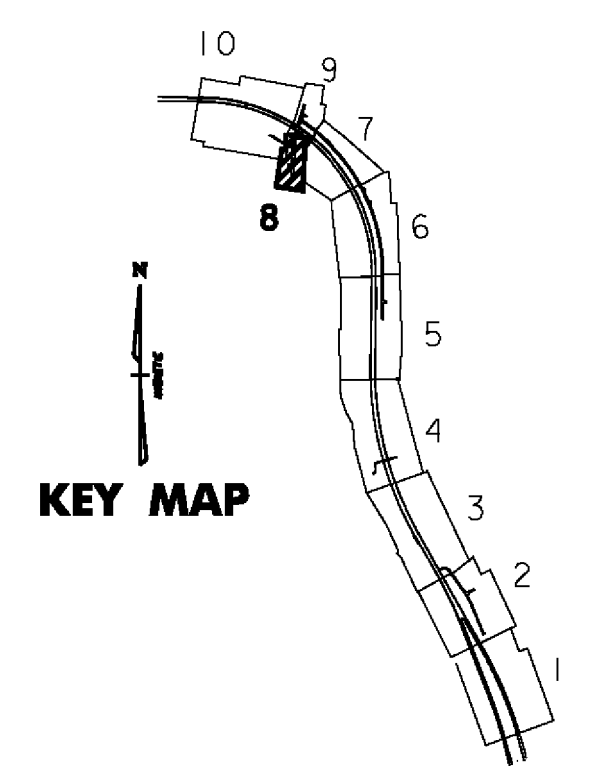
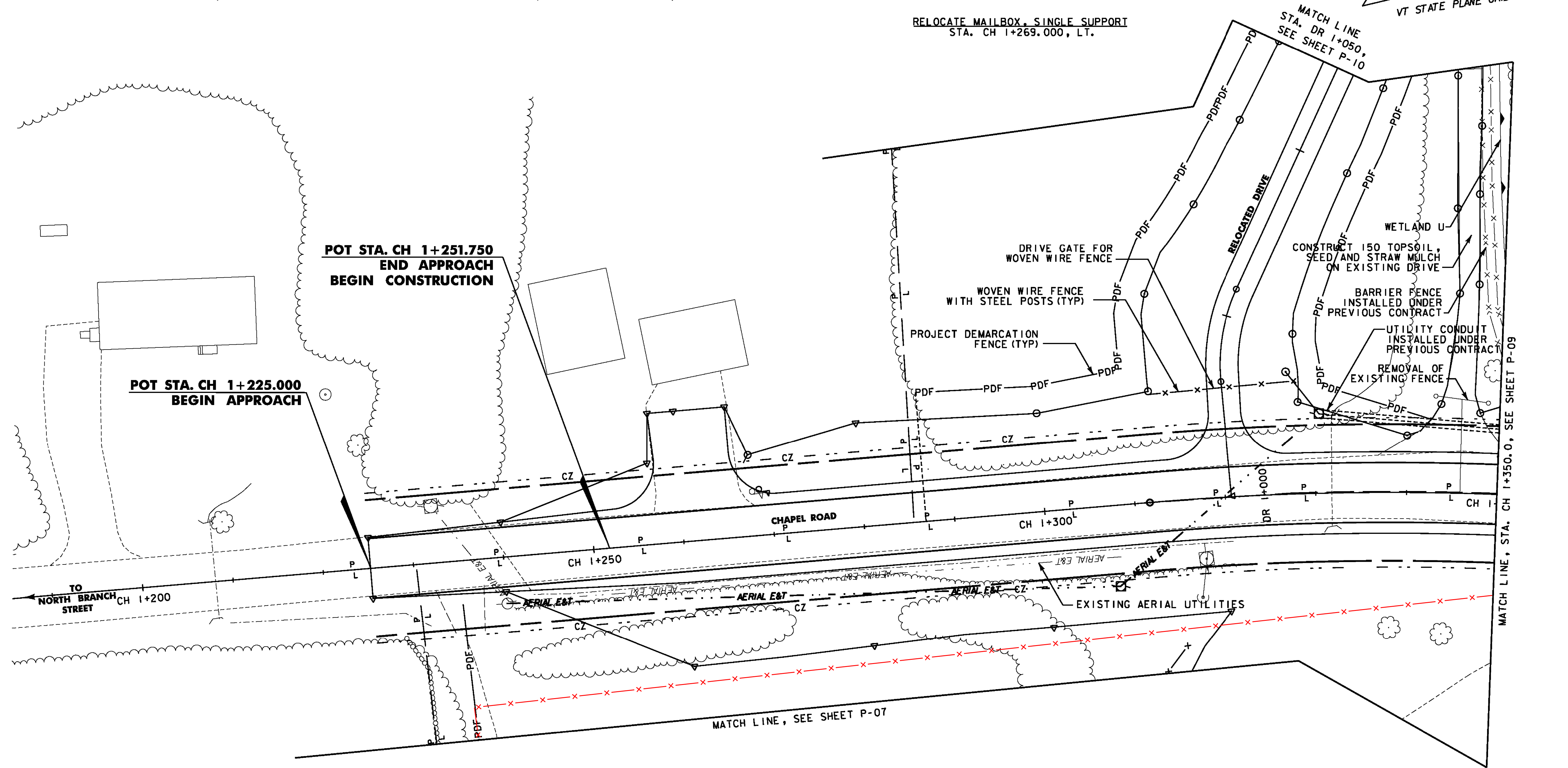
WOVEN WIRE FENCE WITH STEEL POSTS
 STA. DR 1+012.033, 2.5m LT. - 8.2m LT.
 STA. DR 1+012.033, 2.5m RT. - 8.5m RT.

CONSTRUCT DRIVE
 STA. CH 1+261.410, LT. (8.4 m GRAVEL)
 STA. DR 1+004.466 - STA. DR 1+050.000 (3.6 m GRAVEL)

REMOVAL OF EXISTING FENCE
 STA. CH 1+343.117, LT. - CH 1+348.737, LT.

PROJECT DEMARCATION FENCE
 STA. CH 1+236.000, 6.0m RT. - STA. CH 1+238.000, 19.5m RT.
 STA. CH 1+285.000, 14.3m LT. - STA. CH 1+310.000, 14.9m LT.
 STA. CH 1+330.845, 11.9m LT. - STA. CH 1+342.670, 8.1m LT.
 STA. DR 1+011.346, RT. - STA. DR 1+050.000, RT.
 STA. DR 1+014.307, LT. - STA. DR 1+050.000, LT.

RELOCATE MAILBOX, SINGLE SUPPORT
 STA. CH 1+269.000, LT.



VERMONT AGENCY OF TRANSPORTATION			
	PROJECT NAME: BENNINGTON		
	PROJECT NUMBER: AC NH 019-1(52)		
	FILE NAME: ...\plot_files\zd307c2p08.pff	PLOT DATE: 5/16/2011	
	DESIGN SUPERVISOR: GREG EDWARDS	DRAWN BY: STANTEC	
DESIGNED BY: MARC FOISY	CHECKED BY: GARY SANTY		
GENERAL PLAN P-08		SHEET 78 OF 267	

v:\953\active\9530002\transportation\drw\con\tr\ac\1_2\plot_files\zd307c2p08.pff