

WOVEN WIRE FENCE WITH STEEL POSTS
 STA. NB 7+440.000, 75.6m LT. - STA. NB 7+780.000, 54.0m LT.
 STA. NB 7+440.000, 28.5m RT. - STA. NB 7+599.345, 26.8m RT.

CONSTRUCT DRIVE
 STA. QR 1+042.037, RT. (GRAVEL)
 STA. QR 1+100.000, RT. (GRAVEL)

BITUMINOUS CONCRETE CURB, TYPE A 610
 STA. NB 7+440.000, 8.7m RT. - STA. NB 7+612.803, 8.7m RT.
 STA. NB 7+440.000, 8.7m LT. - STA. NB 7+600.000, 8.7m LT.

STEEL BEAM GUARDRAIL, GALVANIZED
 STA. NB 7+440.000, 8.7m RT. - STA. NB 7+612.848, 8.7m RT.
 STA. NB 7+440.000, 8.7m LT. - STA. NB 7+780.000, 8.7m LT.

MANUFACTURED TERMINAL SECTION, FLARED
 STA. NB 7+612.848, 8.7m RT.
 STA. NB 7+588.000, 8.7m LT.

PROJECT DEMARCATION FENCE
 STA. NB 7+440.000, 65.4m LT. - STA. NB 7+497.130, 71.0m LT.
 STA. NB 7+526.776, 17.5m RT. - STA. NB 7+628.774, 31.7m RT.
 STA. NB 7+569.289, 54.4m LT. - STA. NB 7+780.000, 52.4m LT.
 STA. QR 1+042.037, 5.4m RT. - STA. QR 1+094.679, 16.9m RT.
 STA. QR 1+103.667, 16.9m RT. - STA. QR 1+190.000, 18.5m RT.

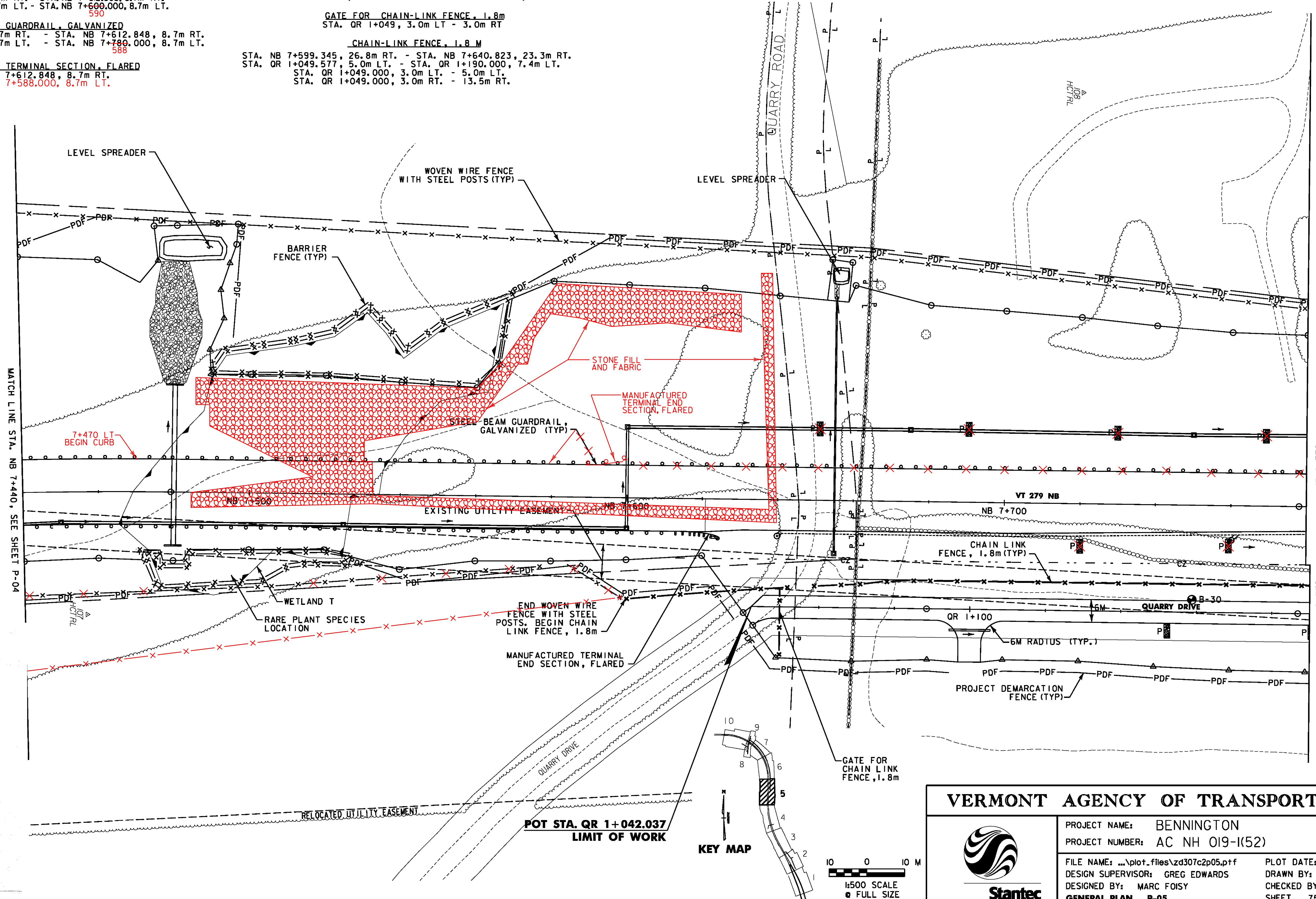
BARRIER FENCE
 STA. NB 7+470.131, 15.3m RT. - STA. NB 7+527.031, 15.7m RT.
 STA. NB 7+489.470, 31.3m LT. - STA. NB 7+569.289, 54.4m LT.

GATE FOR CHAIN-LINK FENCE, 1.8m
 STA. QR 1+049, 3.0m LT - 3.0m RT

CHAIN-LINK FENCE, 1.8m
 STA. NB 7+599.345, 26.8m RT. - STA. NB 7+640.823, 23.3m RT.
 STA. QR 1+049.577, 5.0m LT. - STA. QR 1+190.000, 7.4m LT.
 STA. QR 1+049.000, 3.0m LT. - 5.0m LT.
 STA. QR 1+049.000, 3.0m RT. - 13.5m RT.

STONE FILL, TYPE II
 STA. NB 7+460.000, 15.0m RT. - STA. NB 7+525.000, 15.2m RT. (FOR SLOPE STABILIZATION)

GRUBBING MATERIAL
 STA. NB 7+460.000, 15.0m RT. - STA. NB 7+525.000, 15.2m RT. (FOR SLOPE STABILIZATION)



MATCH LINE STA. NB 7+440, SEE SHEET P-04

MATCH LINE STA. NB 7+780, SEE SHEET P-05

MATCH LINE STA. QR 1+190, SEE SHEET P-06

Drawn on Final Plans - Large Set

Calculation Book Number: _____ Calculation Sheet Number: 01/16/2

Project: Bennington AC NH 019-1(52)

Line Item: _____ Page Number: _____ of _____

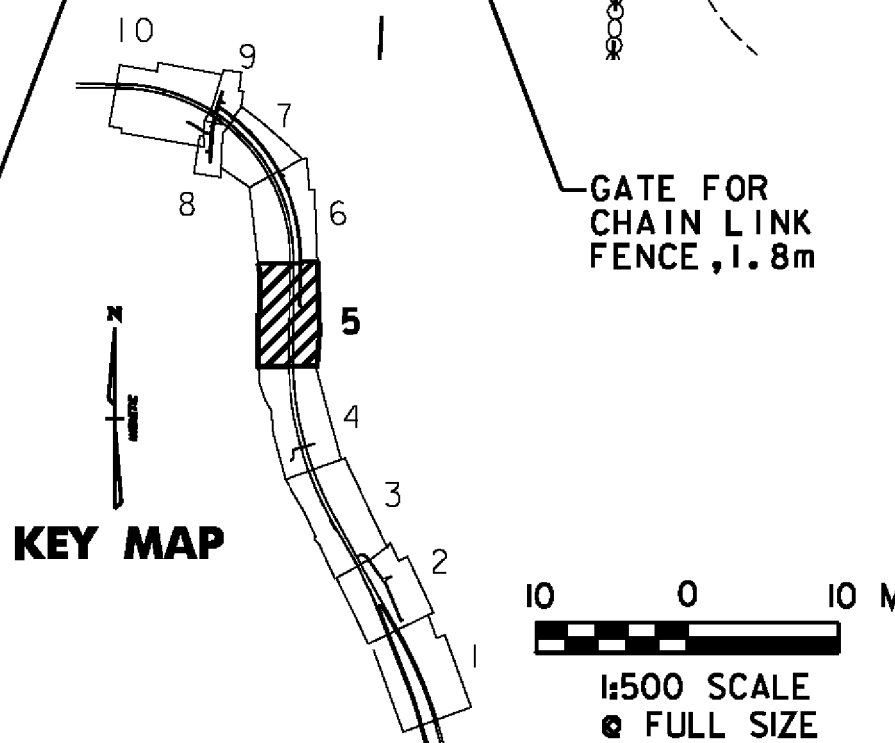
Item: _____ Field Measured by: _____

Location: NB 7+440 - 7+780

Station	Area	Stone Fill #	Chain Link	Other
7+440				
7+445	24.5			
7+450	24.5			
7+455	24.5			
7+460	24.5			
7+465	24.5			
7+470	24.5			
7+475	24.5			
7+480	24.5			
7+485	24.5			
7+490	24.5			
7+495	24.5			
7+500	24.5			
7+505	24.5			
7+510	24.5			
7+515	24.5			
7+520	24.5			
7+525	24.5			
7+530	24.5			
7+535	24.5			
7+540	24.5			
7+545	24.5			
7+550	24.5			
7+555	24.5			
7+560	24.5			
7+565	24.5			
7+570	24.5			
7+575	24.5			
7+580	24.5			
7+585	24.5			
7+590	24.5			
7+595	24.5			
7+600	24.5			
7+605	24.5			
7+610	24.5			
7+615	24.5			
7+620	24.5			
7+625	24.5			
7+630	24.5			
7+635	24.5			
7+640	24.5			
7+645	24.5			
7+650	24.5			
7+655	24.5			
7+660	24.5			
7+665	24.5			
7+670	24.5			
7+675	24.5			
7+680	24.5			
7+685	24.5			
7+690	24.5			
7+695	24.5			
7+700	24.5			
7+705	24.5			
7+710	24.5			
7+715	24.5			
7+720	24.5			
7+725	24.5			
7+730	24.5			
7+735	24.5			
7+740	24.5			
7+745	24.5			
7+750	24.5			
7+755	24.5			
7+760	24.5			
7+765	24.5			
7+770	24.5			
7+775	24.5			
7+780	24.5			

Computed by: _____ Date: _____

Checked by: _____ Date: _____



VERMONT AGENCY OF TRANSPORTATION

PROJECT NAME: BENNINGTON
 PROJECT NUMBER: AC NH 019-1(52)

FILE NAME: ...plot_files\zd307c2p05.pff PLOT DATE: 5/16/2011
 DESIGN SUPERVISOR: GREG EDWARDS DRAWN BY: STANTEC
 DESIGNED BY: MARC FOISY CHECKED BY: GARY SANTY
 GENERAL PLAN P-05 SHEET 75 OF 267