

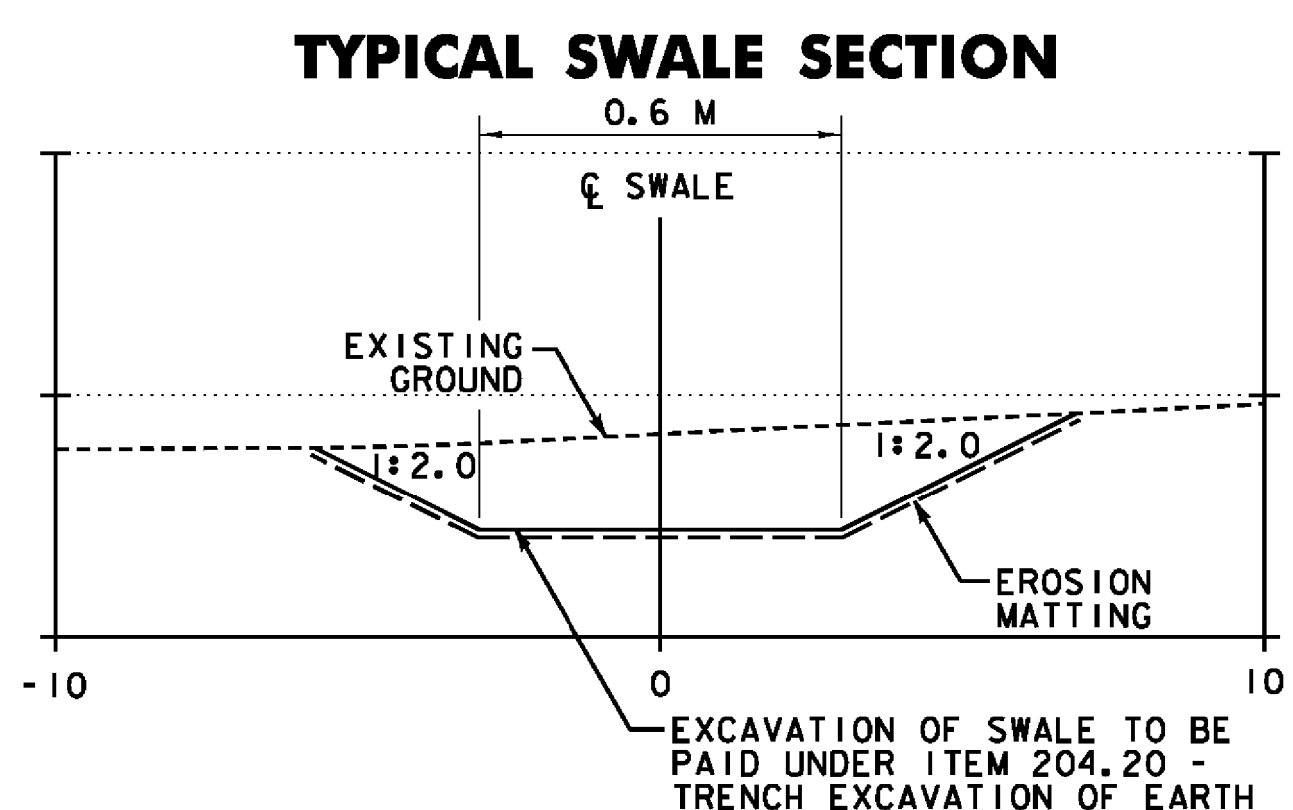
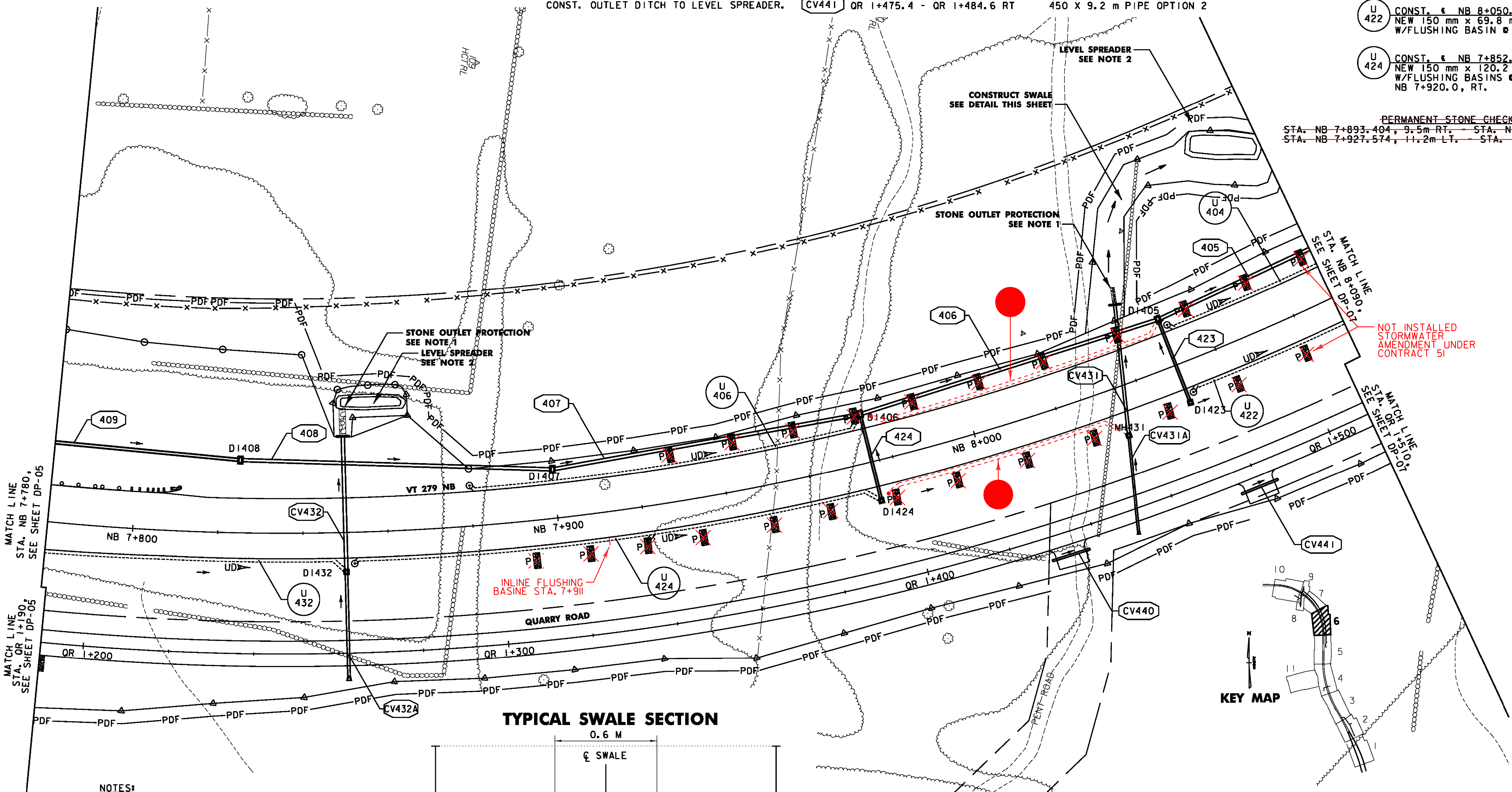


NEW DRAINAGE STRUCTURES			NEW DRAINAGE PIPES		
STRUCTURE #	LOCATION	COMMENTS	PIPE #	LOCATION	COMMENTS
D1405	NB 8+050.0 LT	1200x1800 TYPE B GRATE (1)	405	NB 8+050.0 - NB 8+125.0 LT	750 X 72.9 m PIPE OPTION 2
D1406	NB 7+975.0 LT	1200x1800 TYPE B GRATE (1)	406	NB 7+975.0 LT - NB 8+050.0 LT	750 X 72.9 m PIPE OPTION 2
D1407	NB 7+900.0 LT	1200x1800 TYPE B GRATE (1)	407	NB 7+900.0 - NB 7+975.0 LT	750 X 72.9 m PIPE OPTION 2
D1408	NB 7+825.0 LT	1200x1800 TYPE A GRATE (1)	408	NB 7+825.0 - NB 7+900.0 LT	750 X 72.7 m PIPE OPTION 2
D1423	NB 8+050.0 RT	TYPE B GRATE COVER ("STORM" CAST INTO TOP SURFACE)	423	NB 8+050.0 LT-RT	450 X 20.3 m PIPE OPTION 3
D1424	NB 7+975.0 RT	TYPE B GRATE	424	NB 7+975.0 LT-RT	450 X 20.3 m PIPE OPTION 3
MH431	NB 8+034.0 RT	COVER ("STORM" CAST INTO TOP SURFACE)	CV431	NB 8+045.0 LT - NB 8+034.0 RT	750 X 30.7 m PIPE OPTION 2 CONST. REINFORCED CONCRETE HEADWALL AND STONE FILL TYPE 11 AT OUTLET CONST. OUTLET DITCH TO LEVEL SPREADER.
D1432	NB 7+850.0 RT	1200x1800 TYPE A GRATE (1)			

NEW DRAINAGE PIPES		
PIPE #	LOCATION	COMMENTS
CV431A	NB 8+028.9 - NB 8+034.0 RT	450 X 22.6 m PIPE OPTION 2 CONST. 600 PIPE COUPLING BANDS CONST. END SECTION AT INLET
CV432	NB 7+850.0 LT-RT	750 X 31.4 m PIPE OPTION 2 CONST. REINFORCED CONCRETE HEADWALL @ OUTLET. CONST. OUTLET DITCH WITH STONE FILL TYPE 11 CONST. LEVEL SPREADER
CV432A	NB 7+850.0 RT	600 X 24.5 m PIPE OPTION 2 CONST. 600 PIPE COUPLING BANDS CONST. END SECTION AT INLET.
CV440	QR 1+428.8 - QR 1+437.8 RT	450 X 9.2 m PIPE OPTION 2
CV441	QR 1+475.4 - QR 1+484.6 RT	450 X 9.2 m PIPE OPTION 2

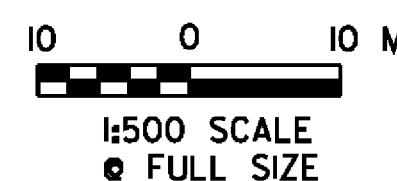
UNDERDRAIN	
U 406	CONST. @ NB 7+880.0 - NB 7+975.0, LT. NEW 150 mm x 89.7 m UND. W/FLUSHING BASIN @ 7+880.0, LT.
U 404	CONST. @ NB 8+050.5 - NB 8+125.0, LT. NEW 150 mm x 68.2 m UND. W/FLUSHING BASIN @ NB 8+050.5, LT.
U 422	CONST. @ NB 8+050.5 - NB 8+125.0, RT. NEW 150 mm x 69.8 m UND. W/FLUSHING BASIN @ NB 8+050.5, RT.
U 424	CONST. @ NB 7+852.0 - NB 7+975.0, RT. NEW 150 mm x 120.2 m UND. W/FLUSHING BASIN @ NB 7+852.0, RT., NB 7+920.0, RT.

**PERMANENT STONE CHECK DAMS, TYPE 1**  
~~STA. NB 7+893.404, 9.5m RT. STA. NB 8+078.276, 9.2m RT.~~  
~~STA. NB 7+927.574, 11.2m LT. STA. NB 8+086.472, 11.8m LT.~~



- NOTES:**
- SEE STORMWATER MANAGEMENT DETAILS SHEET SWM-5 FOR DIMENSIONS AND CONSTRUCTION DETAILS OF STONE OUTLET PROTECTION.
  - SEE STORMWATER MANAGEMENT DETAIL SHEET SWM-1 FOR DIMENSIONS AND CONSTRUCTION DETAILS OF LEVEL SPREADERS. EARTHWORK FOR LEVEL SPREADERS SHALL BE PAID FOR UNDER ITEM 204.20 (TRENCH EXCAVATION).
  - PIPE STATIONING REFLECTS BREAKS AT SHEET MATCHLINES. PIPE LENGTHS REFLECT ACTUAL PIPE SEGMENTS & MATCH THE SUMMARY SHEETS.

NOT INSTALLED  
STORMWATER  
AMENDMENT UNDER  
CONTRACT 51



**VERMONT AGENCY OF TRANSPORTATION**



PROJECT NAME: BENNINGTON  
 PROJECT NUMBER: AC NH 019-1(52)  
 FILE NAME: ...plot\_files\zd307c2dp06.pft PLOT DATE: 5/16/2011  
 DESIGN SUPERVISOR: GREG EDWARDS DRAWN BY: STANTEC  
 DESIGNED BY: MARC FOISY CHECKED BY: GARY SANTY  
 DRAINAGE PLAN DP-06 SHEET 86 OF 267

V:\1953\loc1\19530002\transportation\drainage\com\tr\ocf\_2\plot\_files\zd307c2dp06.pft