

WOVEN WIRE FENCE WITH STEEL POSTS
 STA. NB 7+440.000, 75.6m LT. - STA. NB 7+780.000, 54.0m LT.
 STA. NB 7+440.000, 28.5m RT. - STA. NB 7+599.345, 26.8m RT.

CONSTRUCT DRIVE
 STA. QR 1+042.037, RT. (GRAVEL)
 STA. QR 1+100.000, RT. (GRAVEL)

BITUMINOUS CONCRETE CURB, TYPE A⁶¹⁰
 STA. NB 7+440.000, 8.7m RT. - STA. NB 7+612.803, 8.7m RT.
 STA. NB 7+440.000, 8.7m LT. - STA. NB 7+600.000, 8.7m LT.

STEEL BEAM GUARDRAIL, GALVANIZED
 STA. NB 7+440.000, 8.7m RT. - STA. NB 7+612.848, 8.7m RT.
 STA. NB 7+440.000, 8.7m LT. - STA. NB 7+780.000, 8.7m LT.

MANUFACTURED TERMINAL SECTION, FLARED
 STA. NB 7+612.848, 8.7m RT.
 STA. NB 7+588.000, 8.7m LT.

PROJECT DEMARCATION FENCE
 STA. NB 7+440.000, 65.4m LT. - STA. NB 7+497.130, 71.0m LT.
 STA. NB 7+526.776, 17.5m RT. - STA. NB 7+628.774, 31.7m RT.
 STA. NB 7+569.289, 54.4m LT. - STA. NB 7+780.000, 52.4m LT.
 STA. QR 1+042.037, 5.4m RT. - STA. QR 1+094.679, 16.9m RT.
 STA. QR 1+103.667, 16.9m RT. - STA. QR 1+190.000, 18.5m RT.

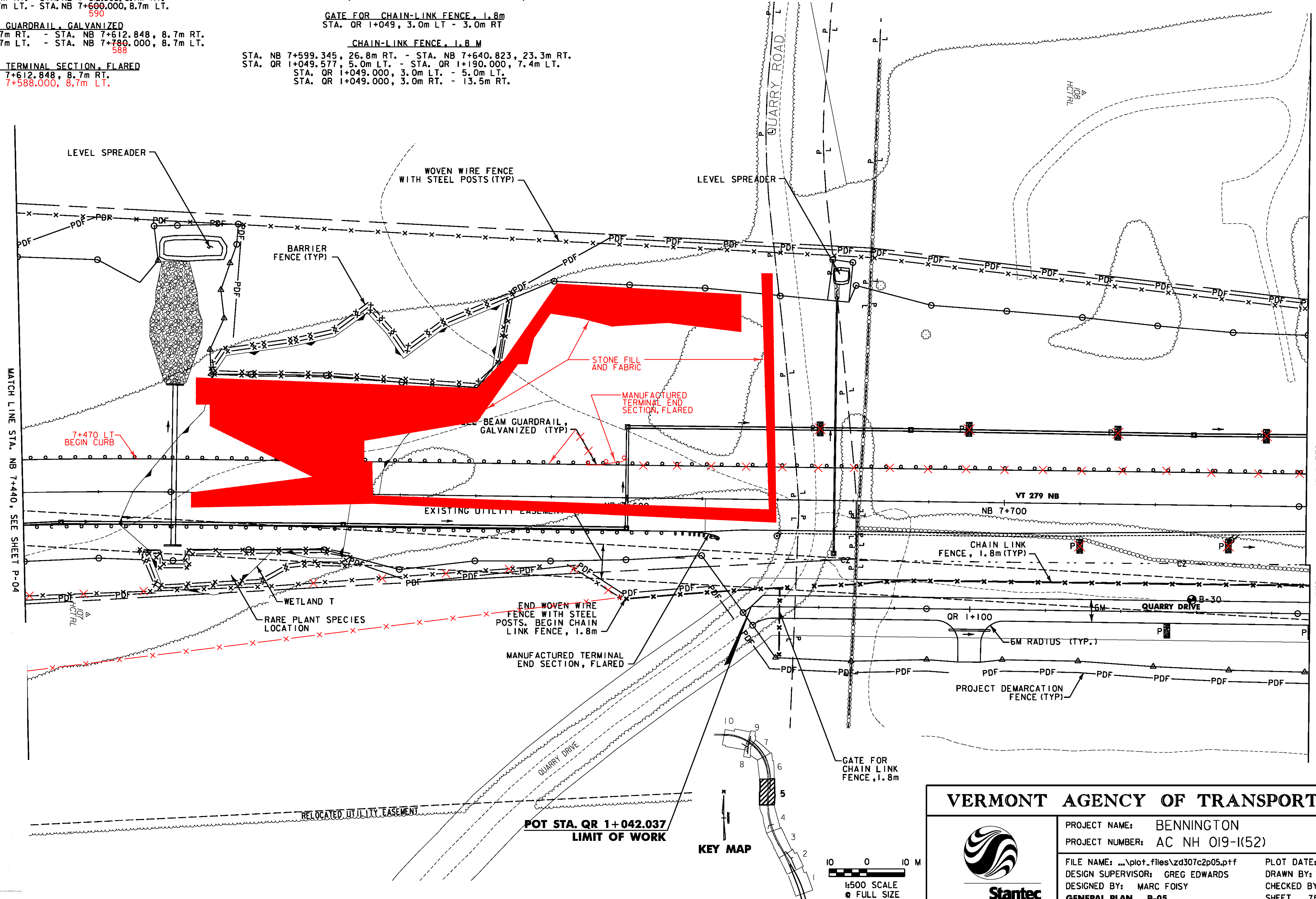
BARRIER FENCE
 STA. NB 7+470.131, 15.3m RT. - STA. NB 7+527.031, 15.7m RT.
 STA. NB 7+489.470, 31.3m LT. - STA. NB 7+569.289, 54.4m LT.

GATE FOR CHAIN-LINK FENCE, 1.8m
 STA. QR 1+049, 3.0m LT - 3.0m RT

CHAIN-LINK FENCE, 1.8m
 STA. NB 7+599.345, 26.8m RT. - STA. NB 7+640.823, 23.3m RT.
 STA. QR 1+049.577, 5.0m LT. - STA. QR 1+190.000, 7.4m LT.
 STA. QR 1+049.000, 3.0m LT. - 5.0m LT.
 STA. QR 1+049.000, 3.0m RT. - 13.5m RT.

STONE FILL, TYPE II
 STA. NB 7+460.000, 15.0m RT. - STA. NB 7+525.000, 15.2m RT. (FOR SLOPE STABILIZATION)

GRUBBING MATERIAL
 STA. NB 7+460.000, 15.0m RT. - STA. NB 7+525.000, 15.2m RT. (FOR SLOPE STABILIZATION)



Drawn on Final Plans - Large Set

Calculation Book Number: _____ Calculation Sheet Number: 01/16/2

Project: Bennington AC NH 019-1(52)

Line Item: _____ Page Number: _____ of _____

Item: _____ Field Measured by: _____

Location: NB 7+440 - 7+640

| Station | Area | Stone Fill # | Chain Link | Notes |
|---------|------|--------------|------------|-------|
| 7+440 | | | | |
| 7+445 | 24.5 | | | |
| 7+450 | 24.5 | | | |
| 7+455 | 24.5 | | | |
| 7+460 | 24.5 | | | |
| 7+465 | 24.5 | | | |
| 7+470 | 24.5 | | | |
| 7+475 | 24.5 | | | |
| 7+480 | 24.5 | | | |
| 7+485 | 24.5 | | | |
| 7+490 | 24.5 | | | |
| 7+495 | 24.5 | | | |
| 7+500 | 24.5 | | | |
| 7+505 | 24.5 | | | |
| 7+510 | 24.5 | | | |
| 7+515 | 24.5 | | | |
| 7+520 | 24.5 | | | |
| 7+525 | 24.5 | | | |
| 7+530 | 24.5 | | | |
| 7+535 | 24.5 | | | |
| 7+540 | 24.5 | | | |
| 7+545 | 24.5 | | | |
| 7+550 | 24.5 | | | |
| 7+555 | 24.5 | | | |
| 7+560 | 24.5 | | | |
| 7+565 | 24.5 | | | |
| 7+570 | 24.5 | | | |
| 7+575 | 24.5 | | | |
| 7+580 | 24.5 | | | |
| 7+585 | 24.5 | | | |
| 7+590 | 24.5 | | | |
| 7+595 | 24.5 | | | |
| 7+600 | 24.5 | | | |
| 7+605 | 24.5 | | | |
| 7+610 | 24.5 | | | |
| 7+615 | 24.5 | | | |
| 7+620 | 24.5 | | | |
| 7+625 | 24.5 | | | |
| 7+630 | 24.5 | | | |
| 7+635 | 24.5 | | | |
| 7+640 | 24.5 | | | |

Computed by: _____ Date: _____ Checked by: _____ Date: _____

MATCH LINE STA. NB 7+780.000 SEE SHEET P-06

MATCH LINE STA. QR 1+190.000 SEE SHEET P-06

VERMONT AGENCY OF TRANSPORTATION

PROJECT NAME: BENNINGTON
 PROJECT NUMBER: AC NH 019-1(52)

FILE NAME: ...plot_files\zd307c2p05.pff PLOT DATE: 5/16/2011
 DESIGN SUPERVISOR: GREG EDWARDS DRAWN BY: STANTEC
 DESIGNED BY: MARC FOISY CHECKED BY: GARY SANTY
 GENERAL PLAN P-05 SHEET 75 OF 267

