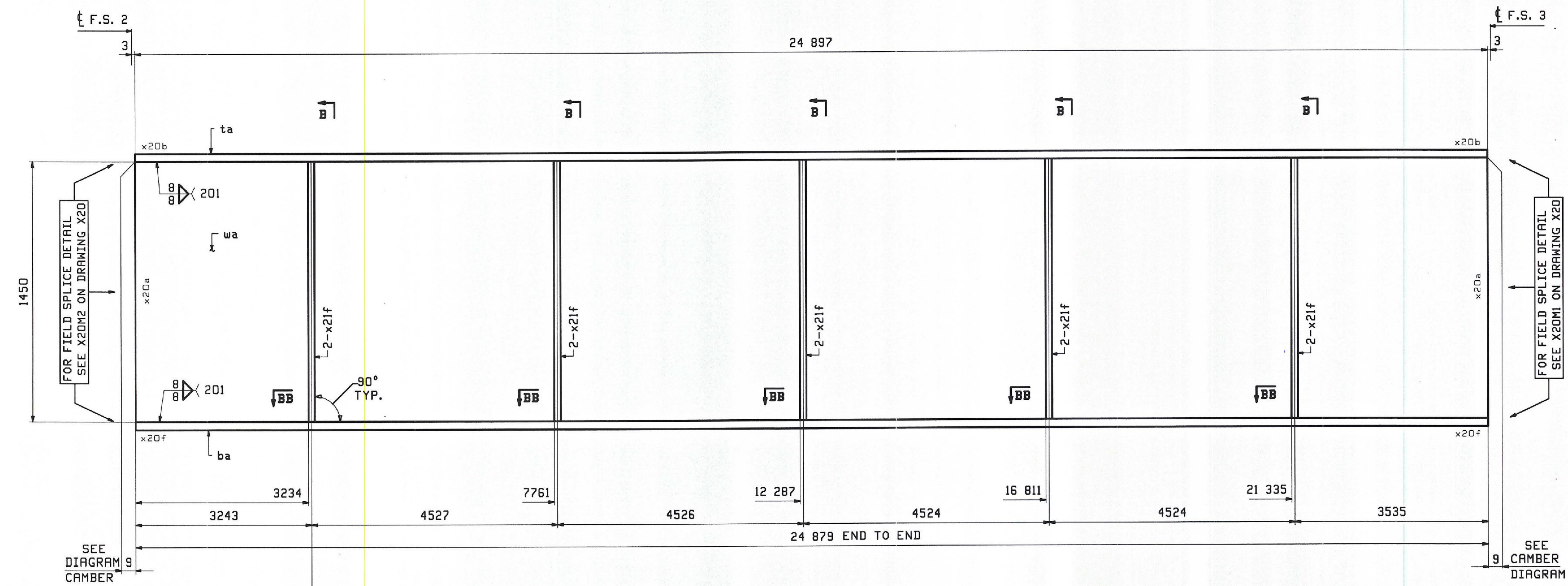
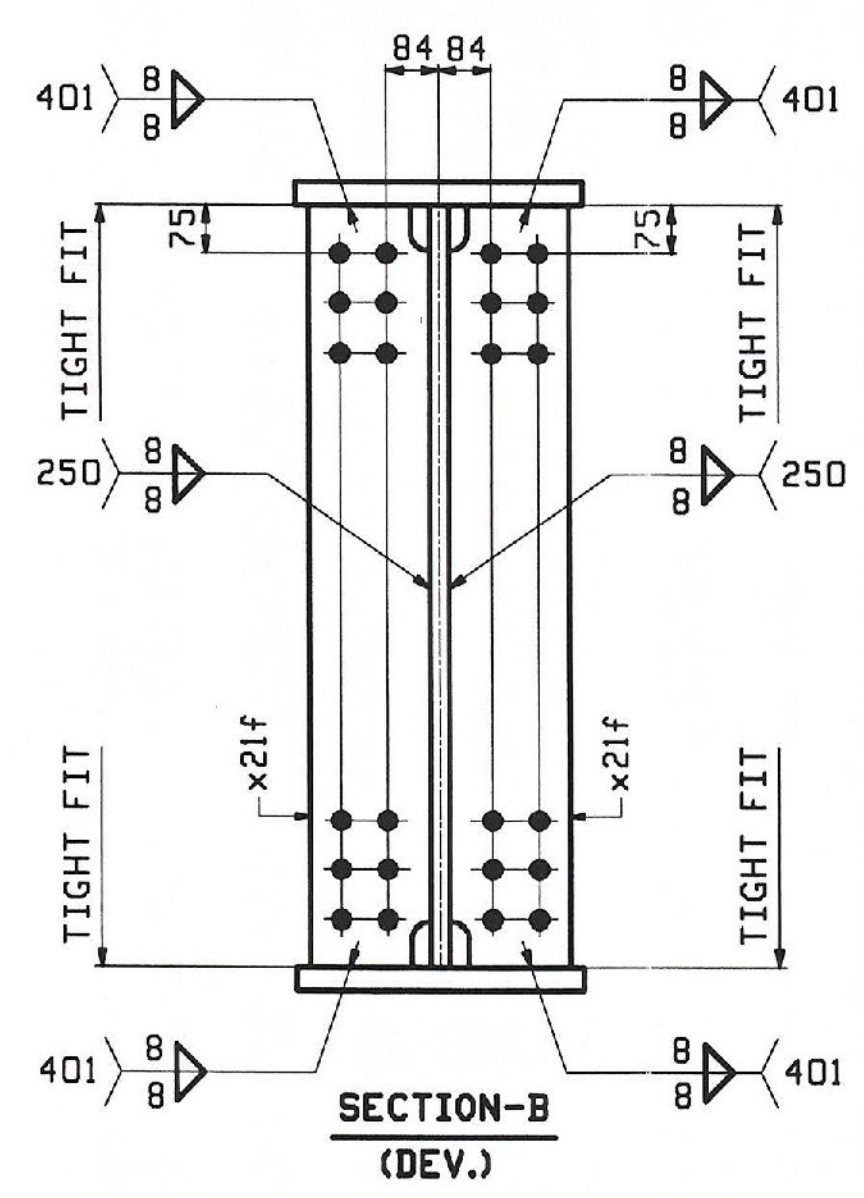
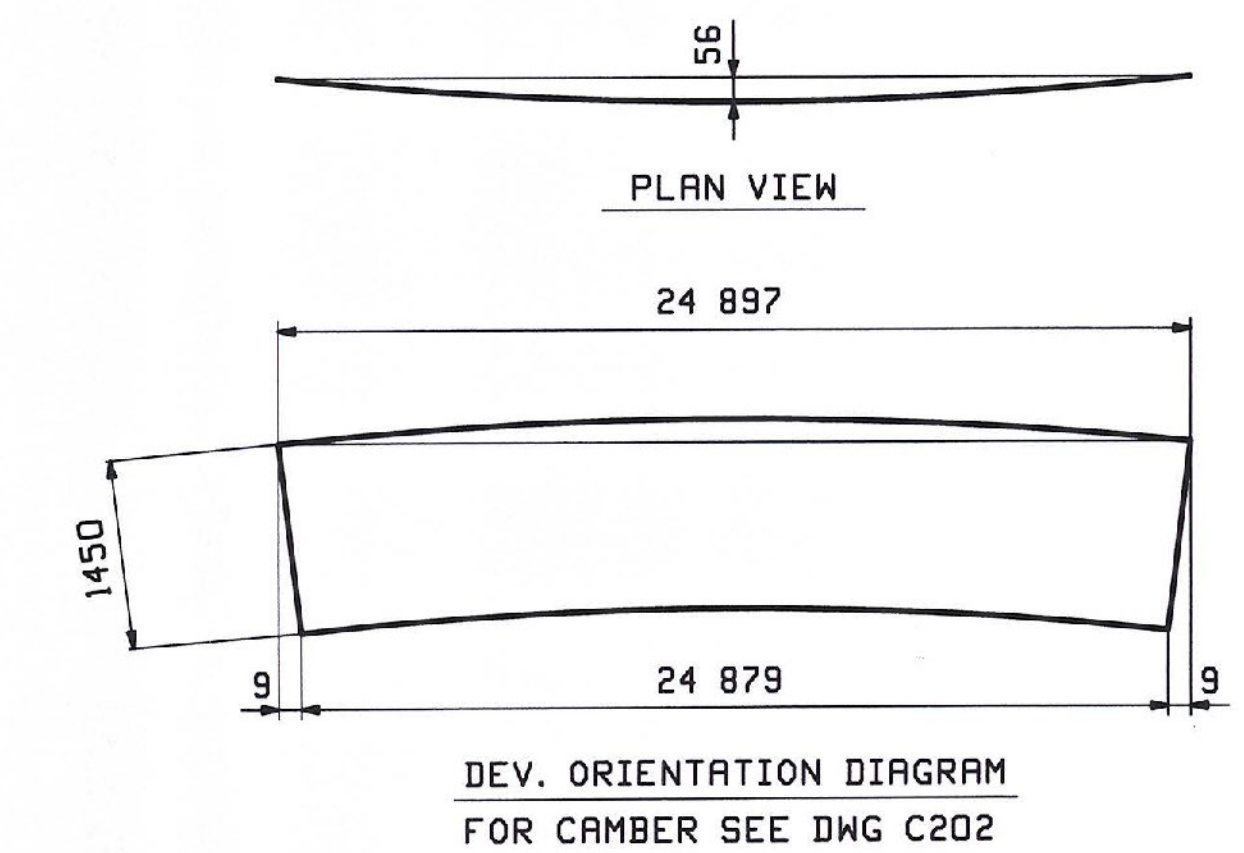
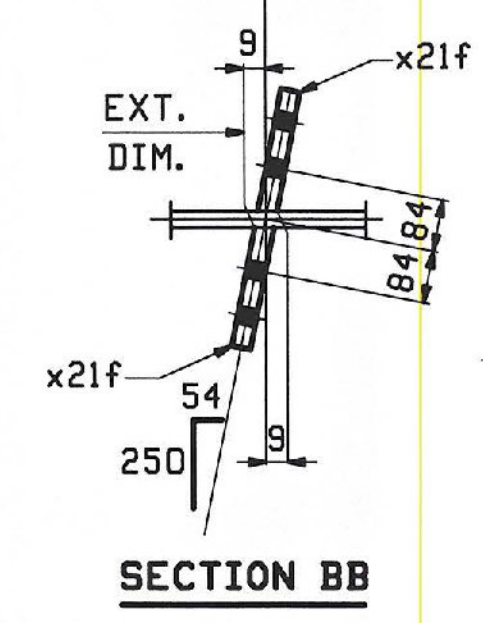


JOB NO.		DRAWING NO.		REV.					
408-2		210							
ABM INFO	SHIP	BILL OF MATERIAL							
PAGE	LINE	MARK	QTY	MARK	MATERIAL	LENGTH	REMARKS	MT	PROCUREMENT NOTES
		210G2C	1		GIRDER				
202	J		1	wa	PL 18x1450	24 897	M270H-345HT2 (H2-3)		
202	A		1	ta	PL 25x450	24 897	M270H-345HT2 (H2-3)		
201	E		1	ba	PL 42x450	24 879	M270H-345HT2 (H2-3)		
204	C		10	x21f	PL 14x200	1 450	M270H-345HT2 (H2-3)		



ONE - GIRDER - 210G2C (DEV.)

FOR FIELD SPLICE DETAILS SEE SHT.X20.
 FOR GIRDER STANDARDS SEE SHT.X21.
 FOR CAMBER DIAGRAM SEE SHT.C202.
 FOR FLANGE DIAGRAM SEE SHT.F203.
 FOR GENERAL NOTES SEE SHT.GN1.



TVGA CONSULTANTS

NO EXCEPTIONS TAKEN REJECTED
 FURNISH AS CORRECTED
 REVISE AND RESUBMIT

ENGINEER has reviewed Shop Drawings and Samples and other data which Contractor is required to submit, and is satisfied with the information given in the Contract Documents and compliance with the design concept of the completed Project as a functioning whole as indicated in the Contract Documents. Such review does not extend to means, methods, techniques, sequences or procedures of construction or to safety precautions and programs and/or tests. Such review does not extend to any LEED certification or accreditation. Contractor is responsible for demonstrating to be confirmed and completed in the job site, for information that pertains solely to the fabrication processes or to techniques of construction, and for coordination of the work of all trades.

BY: *Jm*
 DATE: 11-05-07

REV.	DATE	REMARKS	DWN	CHK	APVL	SHOP
0						SEP 04 2009
MATERIAL:		SURFACE PREP. & PAINT:		HOLES:		SHOP BOLTS:
AS NOTED		SEE DWG GN1		15 16 Ø		NONE
DESCRIPTION: GIRDER - 210G2C						
CASCO BAY STEEL STRUCTURES, INC.						
75 SPRING HILL ROAD			SACO, MAINE 04072			
PHONE (207) 282-7360			FAX. (207) 282-1179			
STRUCTURE: RAMP D				DRAWN:	DATE:	
VT RTE 279 OVER WALLDOOMSAC RIVER				WR	07/13	
BRIDGE NO. B15N				CHKD:	DATE:	
BENNINGTON COUNTY				DO	08/17	
LOCATION: BENNINGTON, VERMONT			JOB NO.	DWG NO.		
PROJ NO. AC NH 019-1(51)			408-2	210		
CUSTOMER: KUBRICKY CONSTRUCTION				REV. ▲		