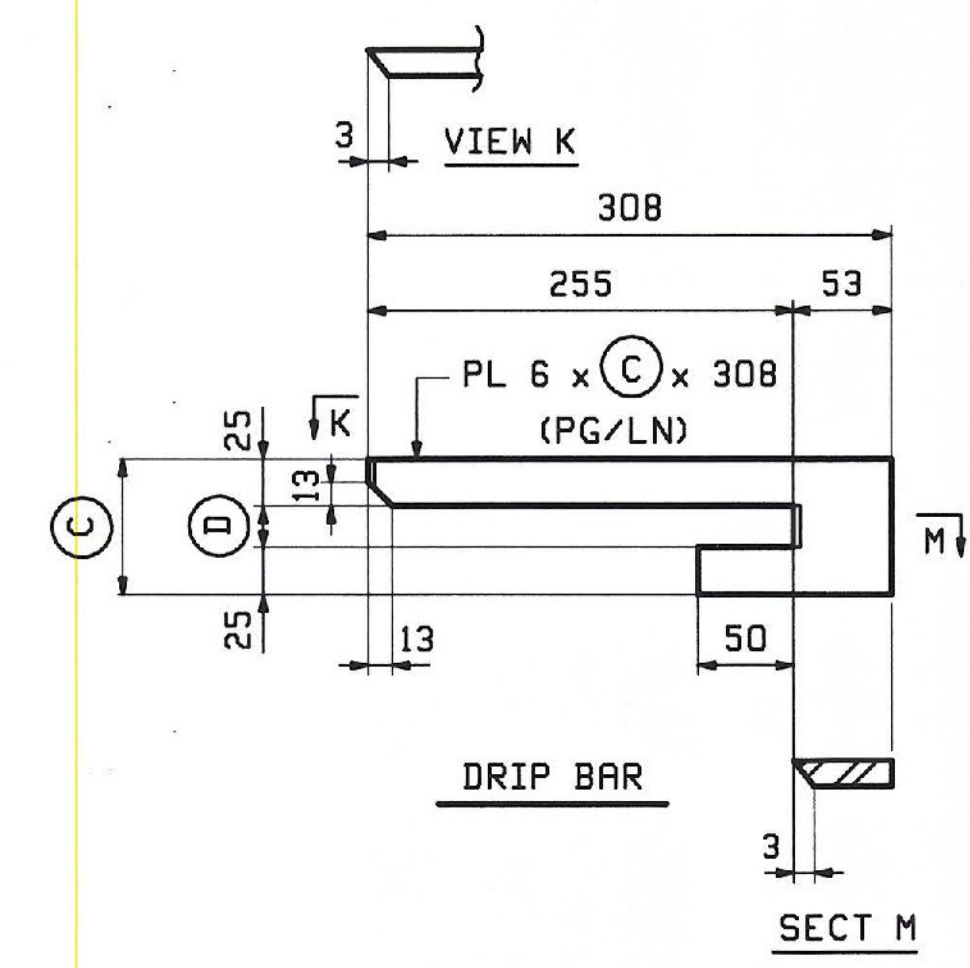
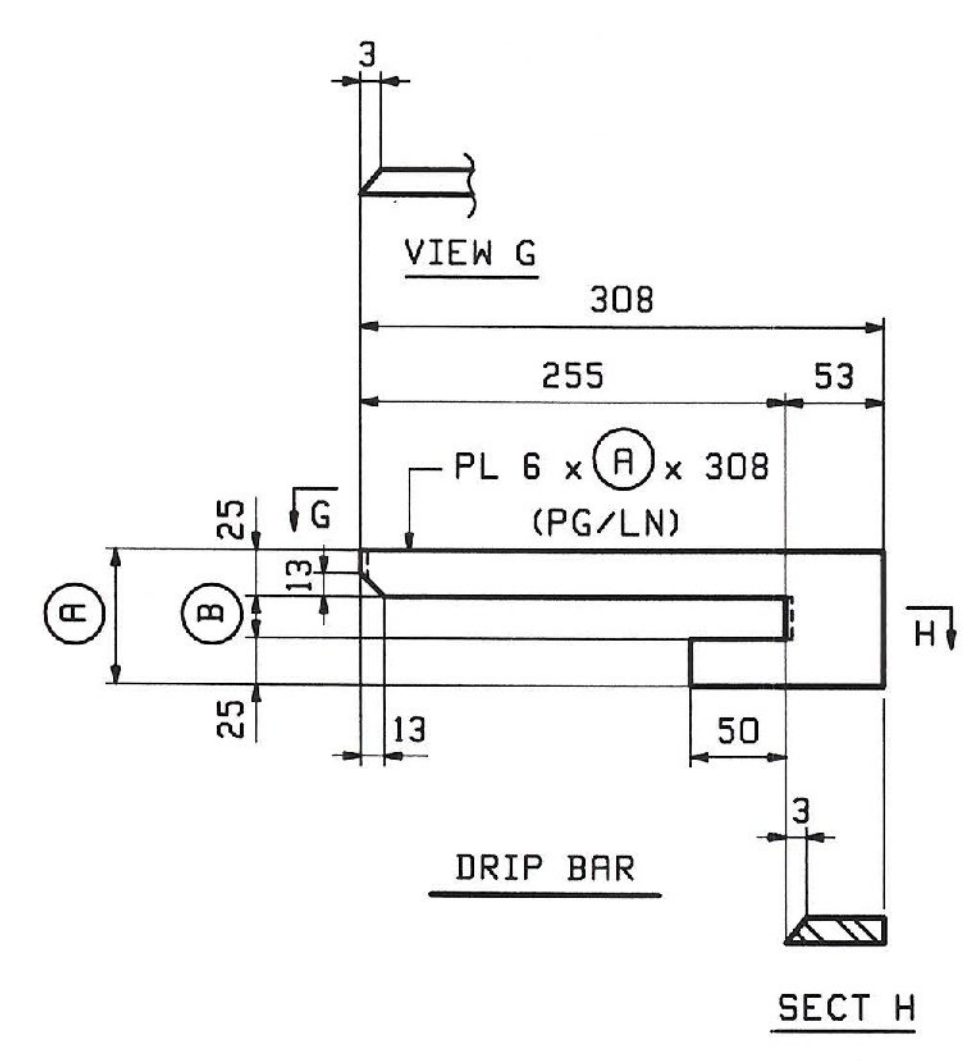


JOB NO.		DRAWING NO.		REV.				
408-2		X21						
ABUT	SHIP	MARK	QTY	MATERIAL	LENGTH	REMARKS	MT	PROCUREMENT NOTES
204	B	4 x21a	1	PL 25x200	1452	M270M-345W (H2-3)		
204	B	4 x21b	1	PL 25x200	1452	M270M-345W (H2-3)		
204	B	12 x21c	1	PL 25x200	1452	M270M-345W (H2-3)		
204	B	12 x21d	1	PL 25x200	1452	M270M-345W (H2-3)		
204	C	162 x21f	1	PL 14x200	1450	M270M-345W (H2-3)		
204	D	1 x21ea	0	PL 6x92	308	DRIP BAR M270M-345W		
204	E	2 x21ab	0	PL 6x106	308	DRIP BAR M270M-345W		
204	D	1 x21ac	0	PL 6x92	308	DRIP BAR M270M-345W		
204	E	2 x21ad	0	PL 6x106	308	DRIP BAR M270M-345W		

PAINT BEARING STIFFENERS AT ABUTMENT # 2



MARK	REQ'D	(A)	(B)	PG LINE		
ABUT 1	x21aa	1	92	42	204	D
PIER 1 & 2	x21ab	2	106	56	204	E

MARK	REQ'D	(C)	(D)	PG LINE		
ABUT 1	x21ac	1	92	42	204	D
PIER 1 & 2	x21ad	2	106	56	204	E

**TVGA CONSULTANTS**  
 NO EXCEPTIONS TAKEN  
 FURNISH AS CORRECTED  
 REVISE AND RESUBMIT  
 ENGINEER has reviewed Shop Drawings and Samples and performance with the information given in the Contract Documents and compliance with the design concept of the completed Project as a functioning service as indicated in the Contract Documents. Such review does not extend to means, methods, techniques, sequences or procedures of construction or to safety precautions and programs incident thereto. Contractor is responsible for dimensions to be confirmed and corrected at the job site for information that pertains solely to the fabrication process or to techniques of construction, and for coordination of the work of all trades.  
 BY: *[Signature]*  
 DATE: 11-05-09

NOTES:  
FOR GENERAL NOTES SEE DRAWING GNI.

REV.	DATE	REMARKS	DWN	CHK	APVL	SHOP
0						SEP 04 2008
MATERIAL:		SURFACE PREP. & PAINT:		HOLES:		SHOP BOLTS:
		SEE GNI		15 16		NONE
DESCRIPTION: GIRDER STANDARDS						
CASCO BAY STEEL STRUCTURES, INC.						
75 SPRING HILL ROAD			SACO, MAINE 04072			
PHONE (207) 282-7360			FAX. (207) 282-1179			
STRUCTURE:		RAMP D			DRAWN: DATE:	
VT RTE 279 OVER HALLOOMSAC RIVER					WR 07/08	
BRIDGE NO. B15N					CHKD: DATE:	
BENNINGTON COUNTY					DO 08/14	
LOCATION: BENNINGTON, VERMONT		JOB NO.		DWG NO.		
PROJ NO. AC NH 019-1(51)		408-2		X21		
CUSTOMER: KUBRICKY CONSTRUCTION				REV. $\Delta$		

ME Rev. Eng. 24, 2009 02:46:52 PM C:\Users\jsh\Documents\2008-2-21 Rev D