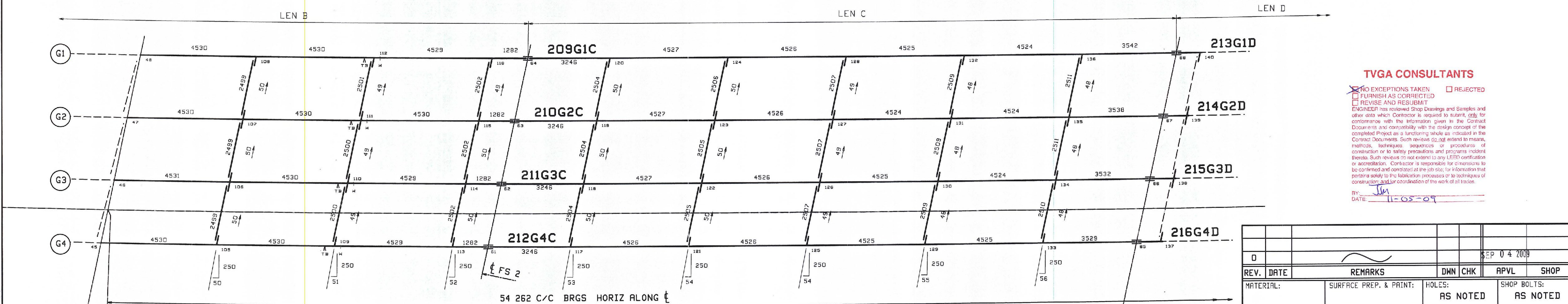


FRAMING PLAN SPAN 1



FRAMING PLAN SPAN 2

- NOTES
1. LONGITUDINAL DIMENSIONS ARE SLOPING ALONG BOTT OF WEB WITH CORRECTIONS MADE FOR VERTICAL CURVE, GRADE & DL CAMBER (UN).
 2. TRANSVERSE DIMENSIONS ARE IN A HORIZ. PLANE (UN).
 3. DROP ARROW POINTS TOWARDS LOW END OF MEMBER.
 4. ENDS OF GIRDERS AND BRG. STIFF'S ARE VERTICAL AFTER DL ROTATION.
 5. CF STIFF, INT STIFF & FIELD SPLICES ARE NORMAL TO GRADE.
 6. BOTT PT NUMBERS = TOP PT NUMBERS + 300.
 7. FOR LAYOUTS SEE "TD" SHEETS.
 8. COMBINE INT. CROSSFRAMES FOR DIFF IN DROPS OF +/- 5
 9. CROSSFRAME DROPS ARE CALCULATED IN THEIR FINAL POSITION.

| Line | LEN A | LEN BL | LEN B | LEN C | Abut 1 | Pier 1 | GIRD-RAD |
|------|--------|--------|--------|--------|--------|--------|----------|
| 1 | 32 589 | 12 619 | 27 450 | 24 890 | .0572 | .0558 | 1368 825 |
| 2 | 32 596 | 12 619 | 27 491 | 24 885 | .0571 | .0557 | 1371 375 |
| 3 | 32 594 | 12 619 | 27 491 | 24 880 | .0570 | .0556 | 1373 825 |
| 4 | 32 590 | 12 618 | 27 489 | 24 877 | .0569 | .0555 | 1376 275 |

TVGA CONSULTANTS

NO EXCEPTIONS TAKEN REJECTED
 FURNISH AS CORRECTED
 REVISE AND RESUBMIT

ENGINEER has reviewed Shop Drawings and Samples and other data which Contractor is required to submit, only for conformance with the information given in the Contract Documents and compliance with the design concept of the completed Project as a functioning whole as indicated in the Contract Documents. Such review does not extend to any LEED certification or accreditation. Contractor is responsible for compliance to be confirmed and completed at the jobsite, for information that pertains solely to the fabrication processes or to techniques of construction and/or coordination of the work of all trades.

BY: Jim
DATE: 11-05-09

| | | | | | | |
|---|------|------------------------|----------|---------|-------------|-------------|
| REV. | DATE | REMARKS | DWN | CHK | APVL | SHOP |
| 0 | | | | | | SEP 04 2009 |
| MATERIAL: | | SURFACE PREP. & PAINT: | HOLES: | | SHOP BOLTS: | |
| | | | AS NOTED | | AS NOTED | |
| DESCRIPTION: CALCULATION PLAN | | | | | | |
| CASCO BAY STEEL STRUCTURES, INC. 75 SPRING HILL ROAD SACO, MAINE 04072 PHONE (207) 282-7360 FAX. (207) 282-1179 | | | | | | |
| STRUCTURE: RAMP D VT RTE 279 OVER WALLLOOMSAC RIVER BRIDGE NO. B15N BENNINGTON COUNTY | | | | DRAWN: | DATE: | |
| | | | | JWG | 07/02 | |
| | | | | CHKD: | DATE: | |
| | | | | WJL | 07/08 | |
| LOCATION: BENNINGTON, VERMONT | | | | JOB NO. | DWG NO. | |
| PROJ NO. AC NH 019-1(51) | | | | 408-2 | WS201 | |
| CUSTOMER: KUBRICKY CONSTRUCTION | | | | REV. | ▲ | |