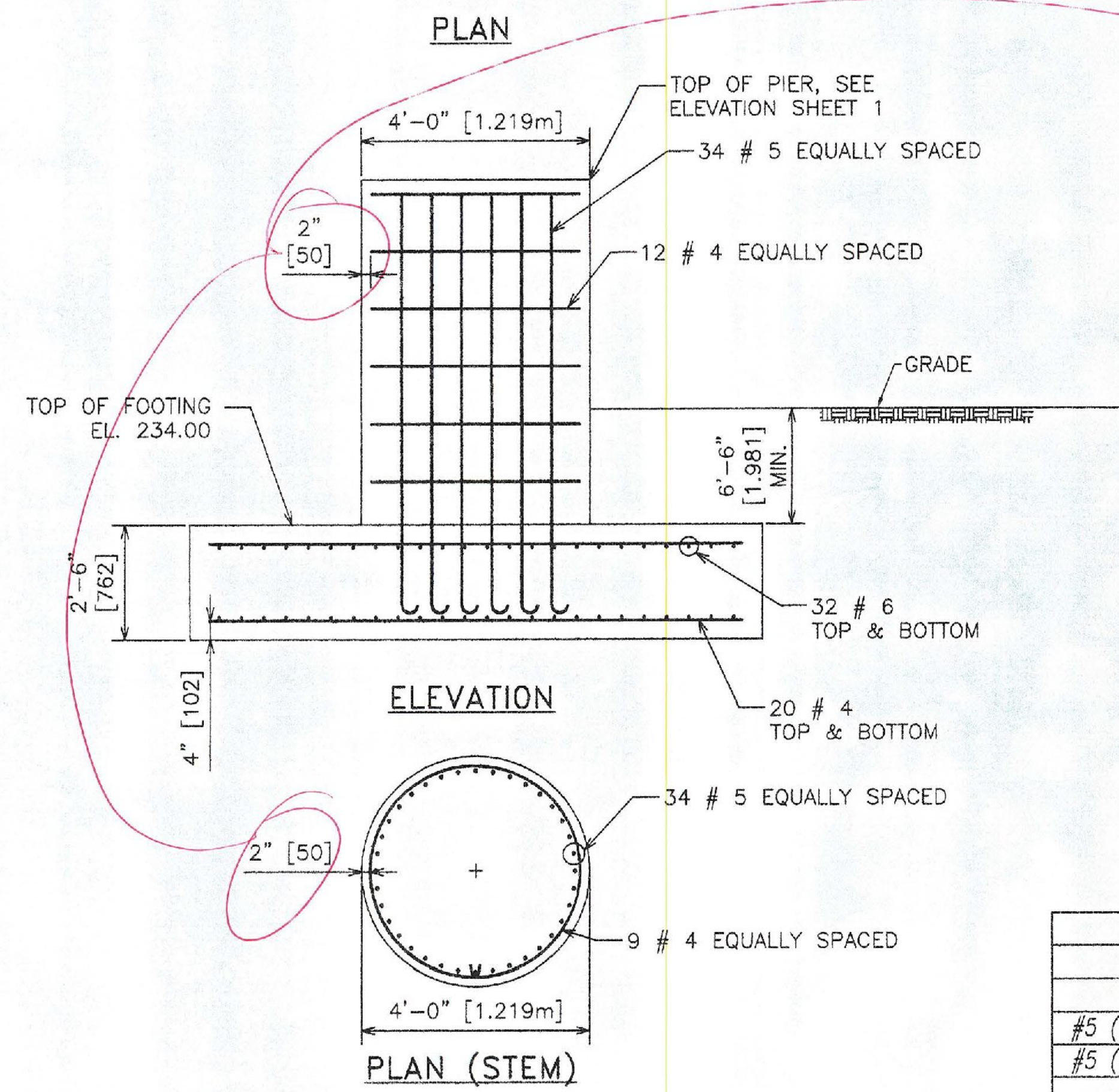
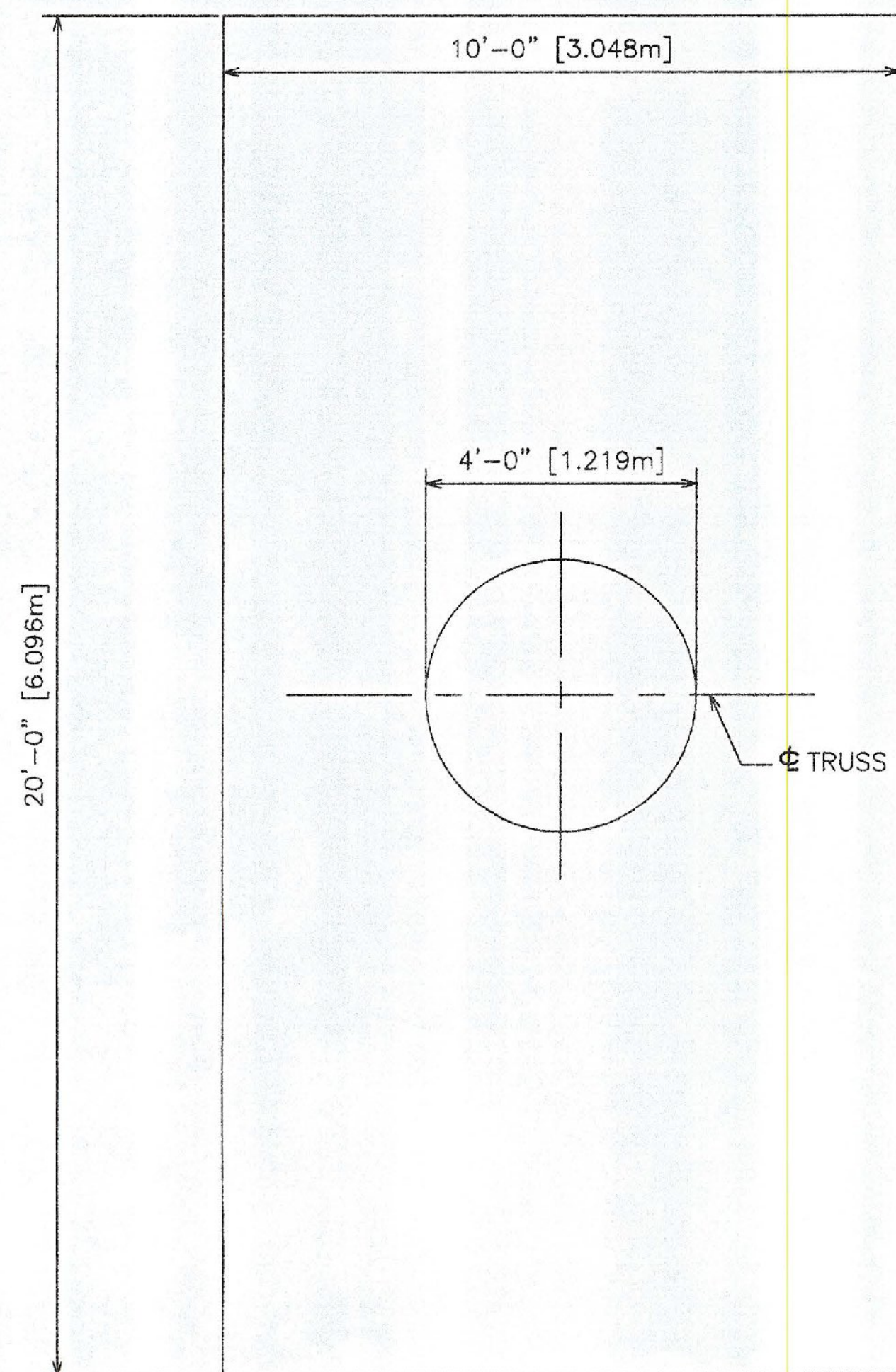


DIMENSIONS SHOWN [] ARE IN MILLIMETERS UNLESS OTHERWISE NOTED.



REBAR LIST

REBAR	PCS. REQD.	LENGTH
#4	80	9'-4"
#4	24	12'-1"
#5 (HOOK ONE END)	34	11'-0"
#5 (HOOK ONE END)	34	14'-4"
#6	128	19'-4"

NB 9+260.0				
MK	QTY	DESCRIPTION	LENGTH	SPEC.
TR1 TRUSS SECTION ASSEMBLY				
D1	1	4.5" O.D. x .337 WALL CHORD PIPE	29'-11.063"	A500 gr B API 5LX42
D2	1	4.5" O.D. x .337 WALL CHORD PIPE	29'-11.063"	A500 gr B API 5LX42
D3	1	4.5" O.D. x .337 WALL CHORD PIPE	25'-6"	A500 gr B API 5LX42
b1	4	1.875" O.D. x .145 WALL DIAGONAL PIPE	4'-0"	A500 gr B API 5LX42
b2	18	1.875" O.D. x .145 WALL DIAGONAL PIPE	5'-11.500"	A500 gr B API 5LX42
s2	3	0.75" SPLICE PLATE	10.500" O.D.	A709 Gr 50
br1	3	0.25" PLUG PLATE	2.5" x 5"	A36

TR2 TRUSS SECTION ASSEMBLY				
D4	1	4.5" O.D. x .337 WALL CHORD PIPE	29'-10.813"	A500 gr B API 5LX42
D5	1	4.5" O.D. x .337 WALL CHORD PIPE	29'-10.437"	A500 gr B API 5LX42
D6	1	4.5" O.D. x .337 WALL CHORD PIPE	29'-10.563"	A500 gr B API 5LX42
b1	6	1.875" O.D. x .145 WALL DIAGONAL PIPE	4'-0"	A500 gr B API 5LX42
b3	21	1.875" O.D. x .145 WALL DIAGONAL PIPE	5'-8.375"	A500 gr B API 5LX42
s2	6	0.75" SPLICE PLATE	10.500" O.D.	A709 Gr 50

TR3 TRUSS SECTION ASSEMBLY				
D7	1	4.5" O.D. x .337 WALL CHORD PIPE	29'-11.063"	A500 gr B API 5LX42
D8	1	4.5" O.D. x .337 WALL CHORD PIPE	29'-11.063"	A500 gr B API 5LX42
D9	1	4.5" O.D. x .337 WALL CHORD PIPE	25'-6"	A500 gr B API 5LX42
b1	4	1.875" O.D. x .145 WALL DIAGONAL PIPE	4'-0"	A500 gr B API 5LX42
b2	18	1.875" O.D. x .145 WALL DIAGONAL PIPE	5'-11.500"	A500 gr B API 5LX42
s2	3	0.75" SPLICE PLATE	10.500" O.D.	A709 Gr 50
br1	3	0.25" PLUG PLATE	2.5" x 5"	A36

LEFT POST ASSEMBLY				
2LU	1	18" O.D. STD PIPE	31'-2.250"	A500 gr B API 5LX42
cp2	1	0.25" CAP PLATE	18.5" O.D.	A36M
gt2	1	0.125" GASKET	18.5" O.D.	50 DURO. NEOPRENE
br5	1	L1.5x1.5x.25"	1'-5.250"	A36
hb1	1	0.5" DIA. HEX BOLT	2.500"	A307
wnt	1	0.5" HEX NUT		A563
rbw	1	0.5" RUBBER WASHER		50 DURO. NEOPRENE
gw	1	0.5" WASHER		F844
vp2	4	0.5" PLATE	16" x 16"	A709 Gr 50
co2	4	0.5" PLATE	7.5" x 7.875"	A709 Gr 50
br3	1	0.625" x 2.500" BAR	21.5"	A36
ga	1	0.125" GASKET	7.750" x 5.250"	50 DURO. NEOPRENE
fc	1	0.25" COVER PLATE	7.750" x 5.250"	A36
cb	4	0.375" DIA. HEX BOLT	1"	A307

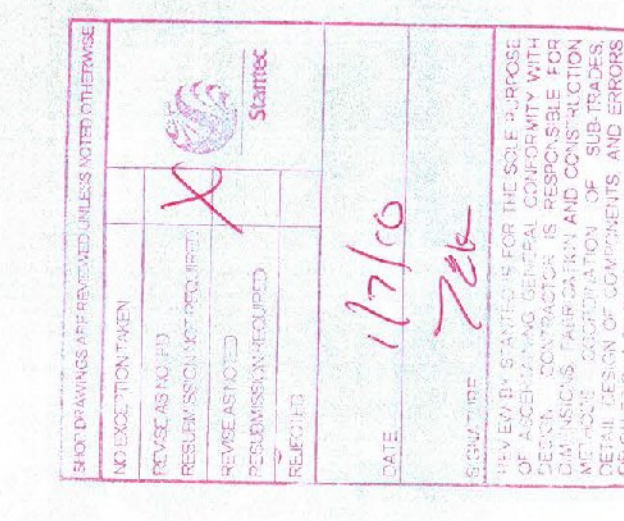
lug	1	0.25" PLATE	1" x 1"	A36M
bp2	1	2" BASE PLATE	2'-10" O.D.	A709 Gr 50

RIGHT POST ASSEMBLY				
2RU	1	18" O.D. STD PIPE	27'-10.875"	A500 gr B API 5LX42
cp2	1	0.25" CAP PLATE	18.5" O.D.	A36
gt2	1	0.125" GASKET	18.5" O.D.	50 DURO. NEOPRENE
br5	1	L1.5x1.5x.25"	1'-5.250"	A36
hb1	1	0.5" DIA. HEX BOLT	2.500"	A307
wnt	1	0.5" HEX NUT		A563
rbw	1	0.5" RUBBER WASHER		50 DURO. NEOPRENE
gw	1	0.5" WASHER		F844
vp2	4	0.5" PLATE	16" x 16"	A709 Gr 50
co2	4	0.5" PLATE	7.5" x 7.875"	A709 Gr 50
br3	1	0.625" x 2.500" BAR	21.5"	A36
ga	1	0.125" GASKET	7.750" x 5.250"	50 DURO. NEOPRENE
fc	1	0.25" COVER PLATE	7.750" x 5.250"	A36
cb	4	0.375" DIA. HEX BOLT	1"	A307
lug	1	0.25" PLATE	1" x 1"	A36
bp2	1	2" BASE PLATE	2'-10" O.D.	A709 Gr 50

SIGN ASSEMBLY				
sv3	3	W6x8.5	13'-9.375"	A36
sv4	2	W6x8.5	17'-4.688"	A36
sv5	2	W6x8.5	19'-8.313"	A36
su2	14	0.5" U-BOLT	6.500"	F1554 Gr 36
sk2	28	0.5" SELF LOCKING NUT		A563 DH
sw2	28	0.5" FALT WASHER		F436

LOOSE ITEMS				
sbt2	54	0.75" DIA. SPLICE HEX BOLT	3.500"	A325
snt1	54	0.75" HEX NUT		A563 DH
swr1	108	0.75" WASHER		F436
ub2	8	0.75" U-BOLT	7.500"	F1554 Gr 36
un1	16	0.75" LOCK NUT		A563 DH
uw1	16	0.75" FALT WASHER		F436

ANCHOR BOLT				
an1	16	2" DIA. STUD	3'-8"	S/S A276 TY304
nt	64	2" DIA. HEX NUT		S/S A194B TY304
wr	16	2" DIA. WASHER		S/S TY304
lk	16	2" DIA. LOCK WASHER		S/S TY305
anp	16	1" PLATE WASHER	4" x 4"	S/S TY305



HIGHWAY SAFETY CORP.
GLASTONBURY, CT

OVERHEAD SIGN STRUCTURE NB 9+260.0	DATE	10/1/69
WWII VETERANS MEMORIAL HIGHWAY	SCALE	N.T.S.
COUNTY OF BENNINGTON	HSC REFERENCE NO.	1724b
VT ROUTE 279, PRINCIPAL ARTERIAL	GENERAL CONTRACTOR	SIZE D REVISION
BENNINGTON AC NH 019-1(51)	SUB CONTRACTOR	SHEET NO.
	F.R. LAFAYETTE	5 of 5

J.J. Kelly