

NB 8+992.0				
MK	QTY	DESCRIPTION	LENGTH	SPEC.
TR1	1	TRUSS SECTION ASSEMBLY		
T1	1	5.563" O.D. x .375" WALL CHORD PIPE	39'-11.750"	A500 gr B API 5LX42
T2	1	5.563" O.D. x .375" WALL CHORD PIPE	39'-11.750"	A500 gr B API 5LX42
T3	1	5.563" O.D. x .375" WALL CHORD PIPE	35'-6.375"	A500 gr B API 5LX42
a1	12	2.875" O.D. x .203" WALL DIAGONAL PIPE	8'-7.375"	A500 gr B API 5LX42
a2	2	2.875" O.D. x .203" WALL DIAGONAL PIPE	7'-2.375"	A500 gr B API 5LX42
a3	1	2.875" O.D. x .203" WALL DIAGONAL PIPE	7'-2.375"	A500 gr B API 5LX42
a4	3	2.875" O.D. x .203" WALL DIAGONAL PIPE	5'-9"	A500 gr B API 5LX42
a5	3	2.875" O.D. x .203" WALL DIAGONAL PIPE	8'-7.375"	A500 gr B API 5LX42
a6	1	2.875" O.D. x .203" WALL DIAGONAL PIPE	5'-9"	A500 gr B API 5LX42
s1	3	1" SPLICE PLATE	11.625" O.D.	A709 Gr 50
br1	3	0.25" PLUG PLATE	2.813x6.063	A36

NB 8+992.0				
MK	QTY	DESCRIPTION	LENGTH	SPEC.
TR2	1	TRUSS SECTION ASSEMBLY		
T4	1	5.563" O.D. x .375" WALL CHORD PIPE	39'-11.500"	A500 gr B API 5LX42
T5	1	5.563" O.D. x .375" WALL CHORD PIPE	39'-11"	A500 gr B API 5LX42
T6	1	5.563" O.D. x .375" WALL CHORD PIPE	39'-11.250"	A500 gr B API 5LX42
a1	12	2.875" O.D. x .203" WALL DIAGONAL PIPE	8'-7.375"	A500 gr B API 5LX42
a4	6	2.875" O.D. x .203" WALL DIAGONAL PIPE	5'-9"	A500 gr B API 5LX42
a5	6	2.875" O.D. x .203" WALL DIAGONAL PIPE	8'-7.375"	A500 gr B API 5LX42
s1	6	1" SPLICE PLATE	11.625" O.D.	A709 Gr 50

NB 8+992.0				
MK	QTY	DESCRIPTION	LENGTH	SPEC.
TR3	1	TRUSS SECTION ASSEMBLY		
T7	1	5.563" O.D. x .375" WALL CHORD PIPE	39'-11.750"	A500 gr B API 5LX42
T8	1	5.563" O.D. x .375" WALL CHORD PIPE	39'-11.750"	A500 gr B API 5LX42
T9	1	5.563" O.D. x .375" WALL CHORD PIPE	35'-6.375"	A500 gr B API 5LX42
a1	12	2.875" O.D. x .203" WALL DIAGONAL PIPE	8'-7.375"	A500 gr B API 5LX42
a2	2	2.875" O.D. x .203" WALL DIAGONAL PIPE	7'-2.375"	A500 gr B API 5LX42
a3	1	2.875" O.D. x .203" WALL DIAGONAL PIPE	7'-2.375"	A500 gr B API 5LX42
a4	3	2.875" O.D. x .203" WALL DIAGONAL PIPE	5'-9"	A500 gr B API 5LX42
a5	3	2.875" O.D. x .203" WALL DIAGONAL PIPE	8'-7.375"	A500 gr B API 5LX42
a6	1	2.875" O.D. x .203" WALL DIAGONAL PIPE	5'-9"	A500 gr B API 5LX42
s1	3	1" SPLICE PLATE	11.625" O.D.	A709 Gr 50
br1	3	0.25" PLUG PLATE	2.813x6.063	A36

NB 8+992.0				
MK	QTY	DESCRIPTION	LENGTH	SPEC.
LEFT POST ASSEMBLY	1	LEFT POST ASSEMBLY		
1LU	1	20" O.D. x .375" WALL PIPE	30'-10.437"	A500 gr B API 5LX42
cp1	1	0.25" CAP PLATE	1'-8.500" O.D.	A36M
gt1	1	0.125" GASKET	1'-8.500" O.D.	50 DURO. NEOPRENE
br2	1	L1.5x1.5x.25"	1'-7.250"	A36
hb1	1	0.5" DIA. HEX BOLT	2.500"	A307

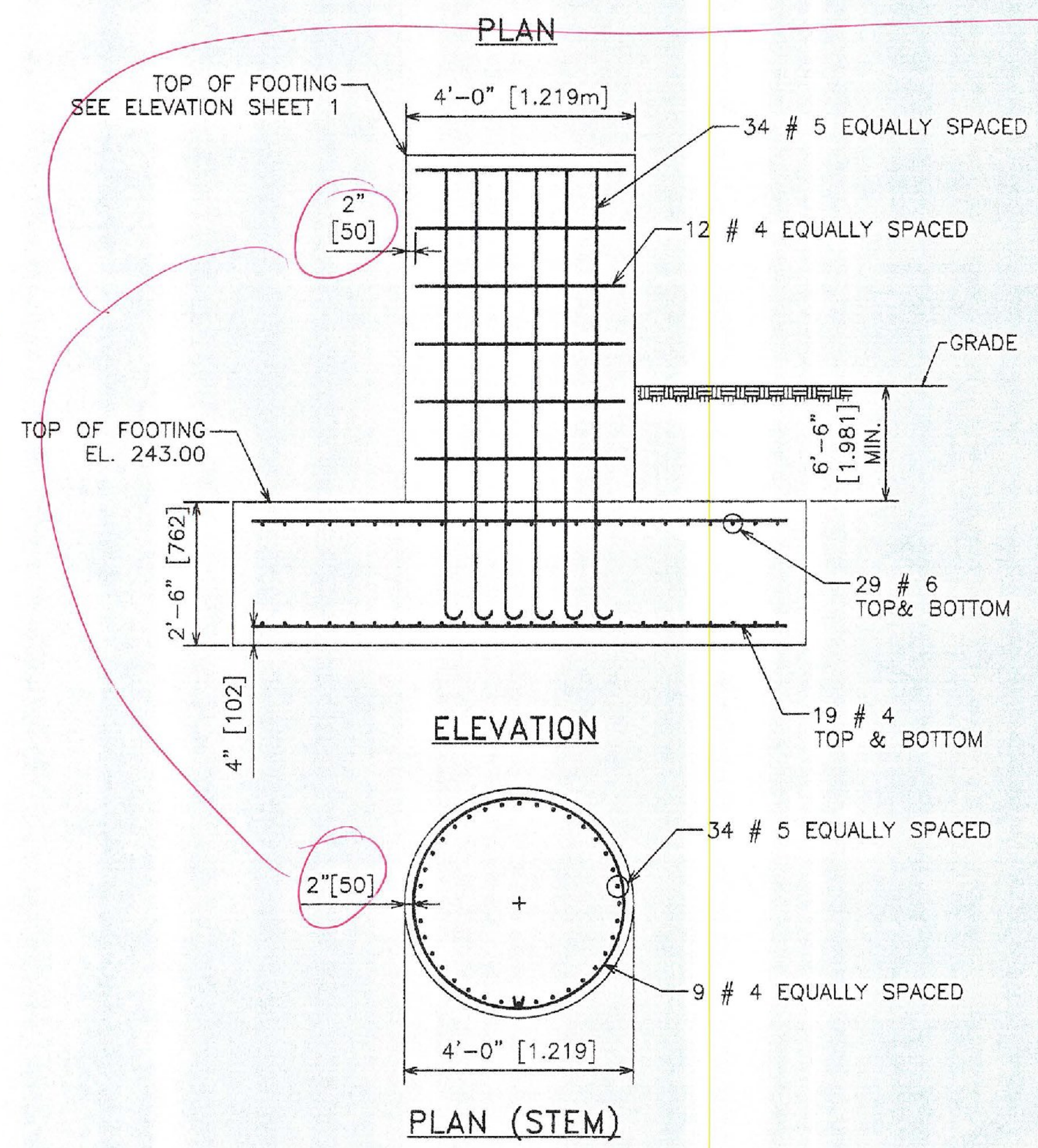
wnt	1	0.5" DIA. HEX NUT		A563
rbw	1	0.5" DIA. RUBBER WASHER		50 DURO. NEOPRENE
gw	1	0.5" DIA. WASHER		F844
vp1	4	0.5" PLATE	16" x 16"	A709 Gr 50
co1	4	0.5" PLATE	9" x 7.500"	A709 Gr 50
br3	1	0.625" x 2.500" BAR	22"	A36M
ga	1	0.125" GASKET	7.750" x 5.250"	50 DURO. NEOPRENE
fc	1	0.25" COVER PLATE	7.750" x 5.250"	A36M
cb	4	0.375" DIA. HEX BOLT	1"	A307
lug	1	0.25" PLATE	1" x 1"	A36
bp1	1	2" BASE PLATE	36" O.D.	A709 Gr 50

NB 8+992.0				
MK	QTY	DESCRIPTION	LENGTH	SPEC.
RIGHT POST ASSEMBLY	1	RIGHT POST ASSEMBLY		
1RU	1	20" O.D. x .375" WALL PIPE	30'-0.563"	A500 gr B API 5LX42
cp1	1	0.25" CAP PLATE	1'-8.500" O.D.	A36M
gt1	1	0.125" GASKET	1'-8.500" O.D.	50 DURO. NEOPRENE
br2	1	L1.5x1.5x.25"	1'-7.250"	A36M
hb1	1	0.5" DIA. HEX BOLT	2.500"	A307
wnt	1	0.5" DIA. HEX NUT		A563
rbw	1	0.5" DIA. RUBBER WASHER		50 DURO. NEOPRENE
gw	1	0.5" DIA. WASHER		F844
vp1	4	0.5" PLATE	16" x 16"	A709 Gr 50
co1	4	0.5" PLATE	9" x 7.500"	A709 Gr 50
br3	1	0.625" x 2.500" BAR	22"	A36M
ga	1	0.125" GASKET	7.750" x 5.250"	50 DURO. NEOPRENE
fc	1	0.25" COVER PLATE	7.750" x 5.250"	A36M
cb	4	0.375" DIA. HEX BOLT	1"	A307
lug	1	0.25" PLATE	1" x 1"	A36M
bp1	1	2" BASE PLATE	36" O.D.	A709 Gr 50

NB 8+992.0				
MK	QTY	DESCRIPTION	LENGTH	SPEC.
SIGN ASSEMBLY	1	SIGN ASSEMBLY		
sv1	3	W6x8.5	17'-4.688"	A36M
sv2	3	W6x8.5	13'-9.375"	A36M
su1	12	0.5" DIA. U-BOLT	8"	F1554 Gr 36
sk1	24	0.5" DIA. SELF LOCKING NUT		A583 DH
sw1	24	0.5" DIA. FALT WASHER		F436

NB 8+992.0				
MK	QTY	DESCRIPTION	LENGTH	SPEC.
LOOSE ITEMS	1	LOOSE ITEMS		
sbt1	66	0.75" DIA. SPLICE HEX BOLT	3.5"	A325
snt1	66	0.75" DIA. HEX NUT		A583 DH
swr1	132	0.75" DIA. WASHER		F436
ub1	8	0.75" DIA. U-BOLT	219mm	F1554 Gr 36
un1	16	0.75" DIA. LOCK NUT		A583 DH
uw1	16	0.75" DIA. FALT WASHER		F436

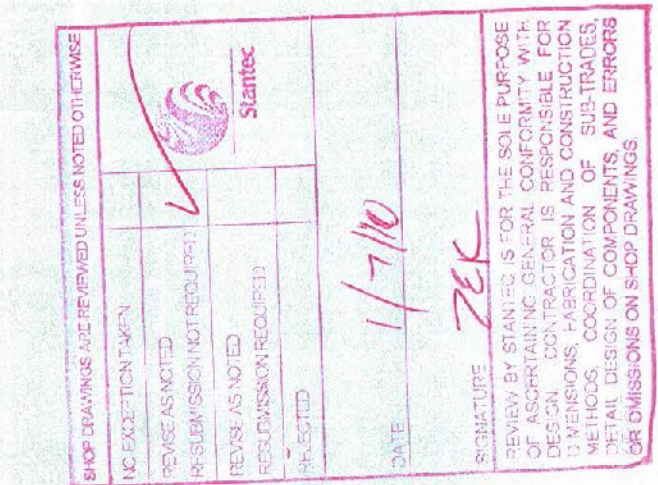
NB 8+992.0				
MK	QTY	DESCRIPTION	LENGTH	SPEC.
ANCHOR BOLT	1	ANCHOR BOLT		
an1	16	2" DIA. STUD	3'-8"	S/S A276 TY304
nt	64	2" DIA. HEX NUT		S/S A194B TY304
wr	16	2" DIA. WASHER		S/S TY304
lk	16	2" DIA. LOCK WASHER		S/S TY305
anp	16	1" PLATE WASHER	4" x 4"	S/S TY305



REBAR	PCS. REQRD.	LENGTH
#4	76	9'-4"
#4	24	12'-1"
#5 (HOOK ONE END)	34	11'-9"
#5 (HOOK ONE END)	34	12'-6"
#6	116	19'-4"

DIMENSIONS SHOWN [ ] ARE IN MILLIMETERS UNLESS OTHERWISE NOTED.

REVISIONS		
No.	Remarks	Date
0	Initial submittal	



**HIGHWAY SAFETY CORP.**  
GLASTONBURY, CT

OVERHEAD SIGN STRUCTURE NB 8+992.0  
WWII VETERANS MEMORIAL HIGHWAY  
COUNTY OF BENNINGTON  
VT ROUTE 279, PRINCIPAL ARTERIAL  
BENNINGTON AC NH 019-1(51)

DATE: 10/1/09  
SCALE: N.T.S.  
HSC REFERENCE NO.: 1724a  
SIZE: D REVISION: 0  
SHEET NO.: 5 of 5

GENERAL CONTRACTOR: F.R. LAFAYETTE

*Handwritten signature: F.R. Lafayette*