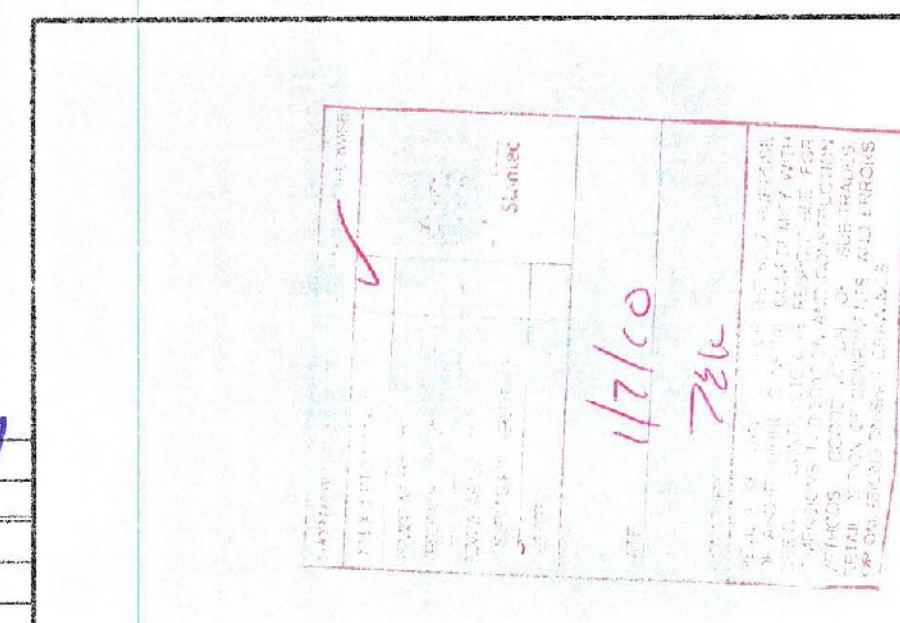


NOTE:  
CAMBER WILL BE ACHIEVED BY SHORTENING LOWER CHORD PIPES BY AN AMOUNT SUCH THAT POSITIVE UPWARD DEFLECTION IS PRODUCED WHEN TRUSSES ARE BROUGHT TOGETHER AT SPLICES.

DIMENSIONS SHOWN [ ] ARE IN MILLIMETER UNLESS OTHERWISE NOTED.

REVISIONS		
No.	Remarks	Date
0	Initial submittal	



**HIGHWAY SAFETY CORP.**  
GLASTONBURY, CT

OVERHEAD SIGN STRUCTURE NB 8+992.0  
WWII VETERANS MEMORIAL HIGHWAY  
COUNTY OF BENNINGTON  
VT ROUTE 279, PRINCIPAL ARTERIAL  
BENNINGTON AC NH 019-1(51)

GENERAL CONTRACTOR: F.R. LAFAYETTE

SCALE: N.T.S.

DATE: 10/1/09

REVISION: 0

SHEET NO. 1 of 5