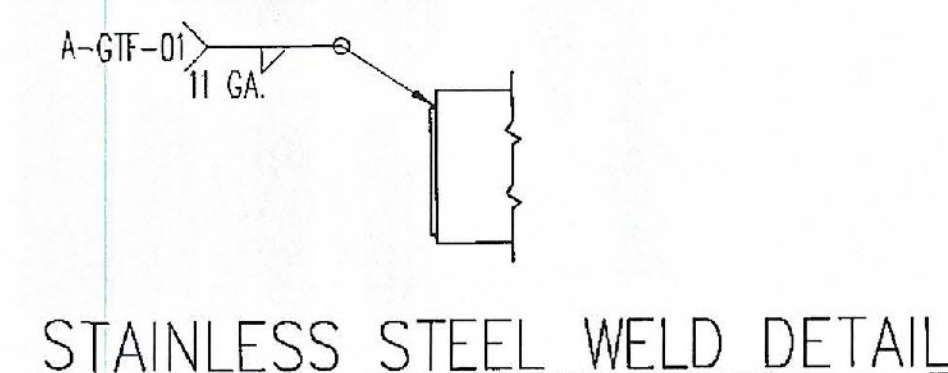
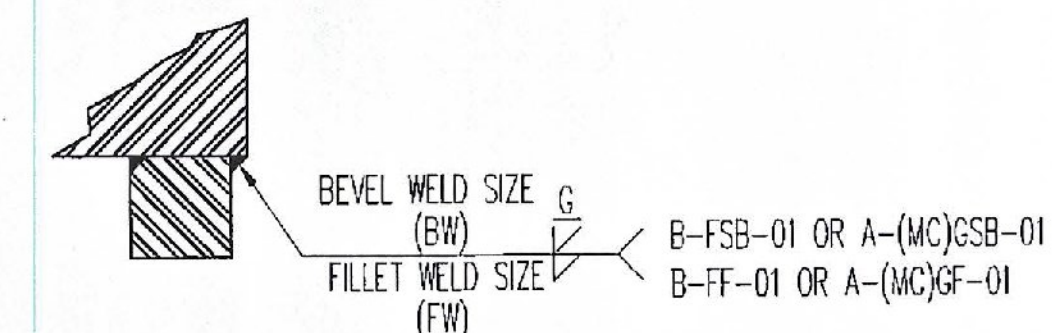
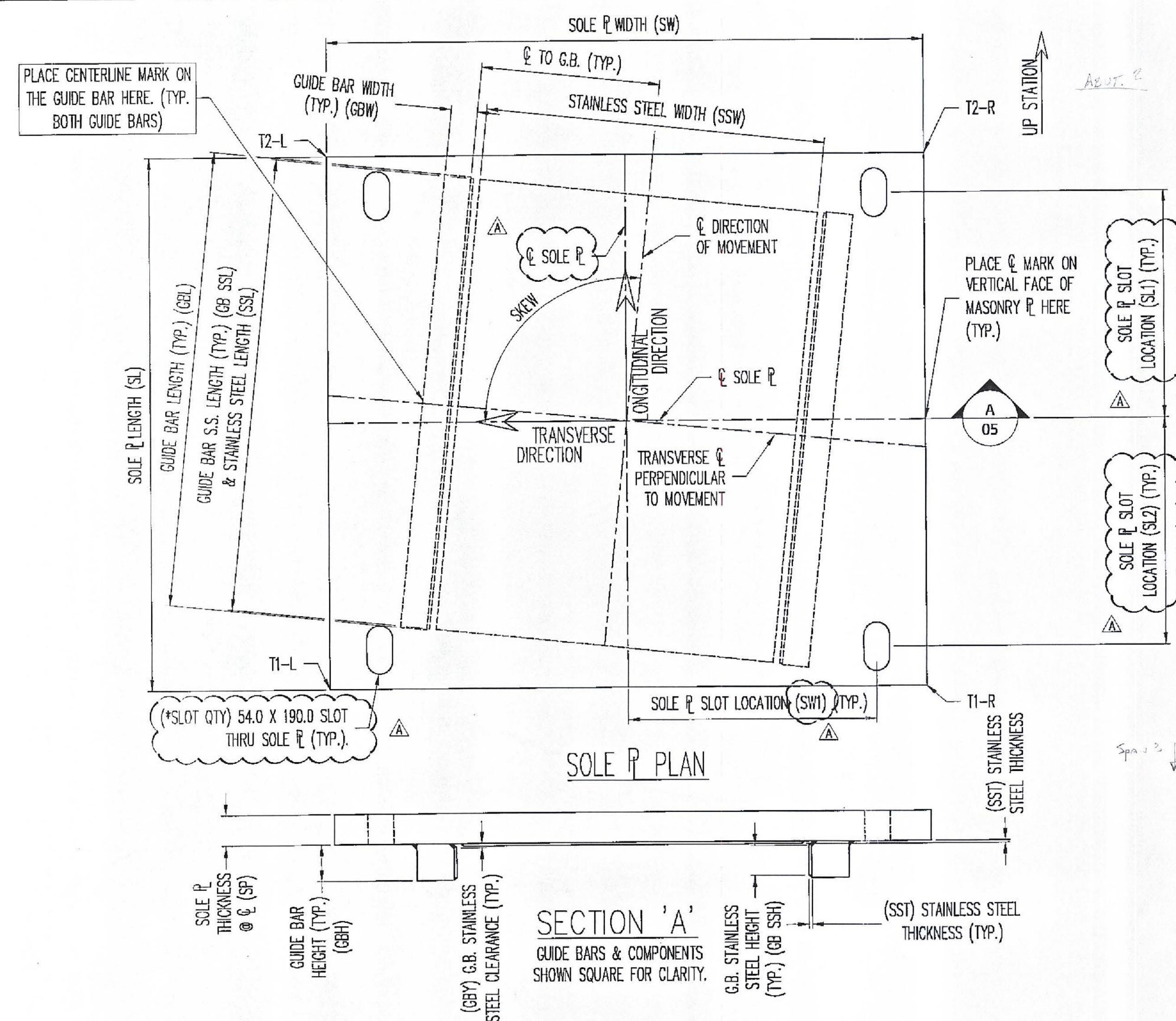


ASSEMBLY 03



SOLE PLATE, STAINLESS STEEL, & GUIDE BAR SCHEDULE (PMG)

ASSEM MK	PIECE MK	QTY	BEVEL T1-L	BEVEL T1-R	BEVEL T2-L	BEVEL T2-R	SP	SW	SL	SW1	SL1	SL2	SLOT QTY	SOLE PLATE MATERIAL	SP SS MK	SST	SSW	SSL	SP SS MATERIAL	GB SS MK	GB SSH	GB SSL	GB SS MATERIAL	GB MK	GBW	GBH	GBL	CL to GB	GBY	FW	BW	GB MATERIAL	SP SKEW
3A	3sp1	4	25.0	25.0	61.0	61.0	43.0	700.0	650.0	N/A	N/A	N/A	N/A	A709 GR 250	3sf1	3.0	374.7	454.0	A240 T304, #8 & 2B	3sg1	34.9	454.0	A240 T304, #8 & 2B	3gb1	50.8	47.6	460.4	197.5	9.5	7.9	11.1 (7.9)	A709 GR 250	+90.0°
3B	3sp2	4	25.0	25.0	62.0	62.0	43.5	700.0	650.0	N/A	N/A	N/A	N/A	A709 GR 250	3sf1	3.0	374.7	454.0	A240 T304, #8 & 2B	3sg1	34.9	454.0	A240 T304, #8 & 2B	3gb1	50.8	47.6	460.4	197.5	9.5	7.9	11.1 (7.9)	A709 GR 250	+90.0°
3C	3sp3	4	25.0	25.0	66.0	66.0	45.5	700.0	750.0	N/A	N/A	N/A	N/A	A709 GR 250	3sf2	3.0	374.7	520.7	A240 T304, #8 & 2B	3sg2	34.9	520.7	A240 T304, #8 & 2B	3gb2	50.8	47.6	527.1	197.5	9.5	7.9	11.1 (7.9)	A709 GR 250	+90.0°
3D	3sp4	4	25.0	25.0	67.0	67.0	46.0	700.0	750.0	N/A	N/A	N/A	N/A	A709 GR 250	3sf2	3.0	374.7	520.7	A240 T304, #8 & 2B	3sg2	34.9	520.7	A240 T304, #8 & 2B	3gb2	50.8	47.6	527.1	197.5	9.5	7.9	11.1 (7.9)	A709 GR 250	+90.0°
3F	3sp5	4	25.0	25.0	61.0	61.0	43.0	750.0	650.0	295.0	117.5	112.5	4	A709 GR 250	3sf3	3.0	238.1	444.5	A240 T304, #8 & 2B	3sg3	22.2	444.5	A240 T304, #8 & 2B	3gb3	34.9	34.9	450.9	130.8	9.5	7.9	11.1 (7.9)	A709 GR 250	+90.0°
3G	3sp6	4	25.0	25.0	62.0	62.0	43.5	750.0	650.0	295.0	117.5	112.5	4	A709 GR 250	3sf3	3.0	238.1	444.5	A240 T304, #8 & 2B	3sg3	22.2	444.5	A240 T304, #8 & 2B	3gb3	34.9	34.9	450.9	130.8	9.5	7.9	11.1 (7.9)	A709 GR 250	+90.0°

TVGA CONSULTANTS

NO EXCEPTIONS TAKEN REJECTED
 FURNISH AS CORRECTED
 REVISE AND RESUBMIT
 ENGINEER has reviewed Shop Drawings and Samples and other data which Contractor is required to submit, only for conformance with the information given in the Contract Documents and compatibility with the design concept of the Contract Documents. Such reviews do not extend to means, methods, techniques, sequences or procedures of construction or to safety precautions and programs incident thereto. Contractor is responsible for information that be confirmed and validated at the job site for information that pertains to the fabrication processes or to techniques of construction, and for coordination of the work of all trades.

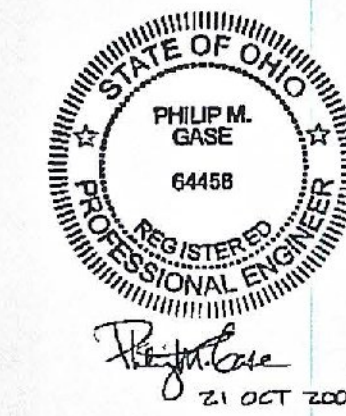
DATE: 11-18-09

SEE SHT. 03 FOR ASSEMBLY AND LOCATION INFORMATION
 SEE SHT. 04 FOR OTHER SUB-ASSEMBLY DETAILS
 SEE SHT. 01 FOR GENERAL NOTES & COATING LIMITS
 ALL DIMENSIONS IN MILLIMETERS UNLESS OTHERWISE NOTED

REV.	DESCRIPTION	DATE	DET.	CKD.
△	REV. SLOT LOCATIONS & ADDED NOTE	10/20/09	DA	MJG

LOCATION	ITEM	QUANTITY
LOCATION — VT-279 & RAMPS OVER WALLOOMSAC RIVER	—	—
BRIDGE — B15N & B15S	—	—
PROJECT — AC NH 019-1(51)	—	—
P.O. NO. — 200901908	—	—
DESIGNER — TVGA CONSULTANTS	—	—
CUSTOMER — KUBRICKY CONSTRUCTION CORP.	—	—

DESCRIPTION	SCALE	DRAWN BY	CHECKED BY	DATE
UNI-DIRECTIONAL HLMR SUB ASSEMBLY & DETAILS BENNINGTON CO., VT	N.T.S.	DA	MJG	7/29/09
PROJECT NUMBER	PROJECT CODE	REVISION	SHEET	
27084	1112	1	05	



D.S. BROWN

THE D.S. BROWN COMPANY
 300 E. CHERRY STREET
 NORTH BALTIMORE, OHIO 45872
 419.257.3561
 FAX: 419.257.0332
 WWW.DSBROWN.COM