

TVGA CONSULTANTS

NO EXCEPTIONS TAKEN REJECTED
 FURNISH AS CORRECTED
 REVISE AND RESUBMIT

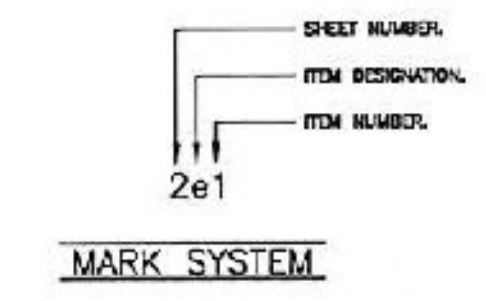
ENGINEER has reviewed Shop Drawings and Samples and other data which Contractor is required to submit, only for conformance with the information given in the Contract Documents and compatibility with the design concept of the completed Project as a functioning whole as indicated in the Contract Documents. Such reviews do not extend to means, methods, techniques, sequences or procedures of construction or to safety precautions and programs incident thereto. Such reviews do not extend to any LEED certification or accreditation. Contractor is responsible for dimensions to be confirmed and correlated at the job site; for information that pertains solely to the fabrication processes or to techniques of construction; and for coordination of the work of all trades.

BY: *[Signature]*
DATE: 6/1/2010

INSPECTION REQUIRED

VERMONT AGENCY OF TRANSPORTATION
COUNTY: BENNINGTON
PROJECT NO.: AC NH 019-1(51)
CAPITAL PROJECT ID NO.: -
BRIDGE NO.: B15, B15N, B15S
WBA PRODUCT DESCRIPTION: MODULAR
WBA PRODUCT NO.: STM126770AA

SEE SHEET 11 FOR ADDITIONAL INFORMATION



DRAWING ACTION:	DATE:
SUBMITTED FOR APPROVAL	1/20/10
<small>Information provided herein, including but not limited to, any drawing, design, photograph, graphic, or statement(s) is/are proprietary and the property of Watson-Bowman Acme Corporation ("Company"). Reproduction, translation, or reduction to any electronic medium or machine readable form, in whole or part, is strictly prohibited, except for the express purpose for which it has been furnished, without prior written consent of Company. All Materials contained herein are provided by Company for information purposes only. Company reserves the right to amend or withdraw any information contained in the Material's without notice. All technical or other advice by Company, whether verbal or written, concerning products, or the use of products in specific situations ("Advice") is given by Company and is used at the Users own risk.</small>	

 <small>Watson Bowman Acme Corp. 50 Pawtucket Drive Pawtucket, RI 02860 Phone: (781) 671-7528 Fax: (781) 671-4228 www.wbacorp.com</small>	 <small>The Chemical Company</small>	DETAILED BY: TPL DATE: 12/23/09
	CHECKED BY: TEB DATE: 1/7/10	WBA JOB NO.: 126770 DRAWING NO.: B-27569
PROJECT: WWII VETERAN'S MEMORIAL HIGHWAY VT ROUTE 279, PRINCIPAL ARTERIAL WBA MODULAR STM-600 EXPANSION JOINT DETAILS		SCALE: NTS SHEET NO.: 12 of 14