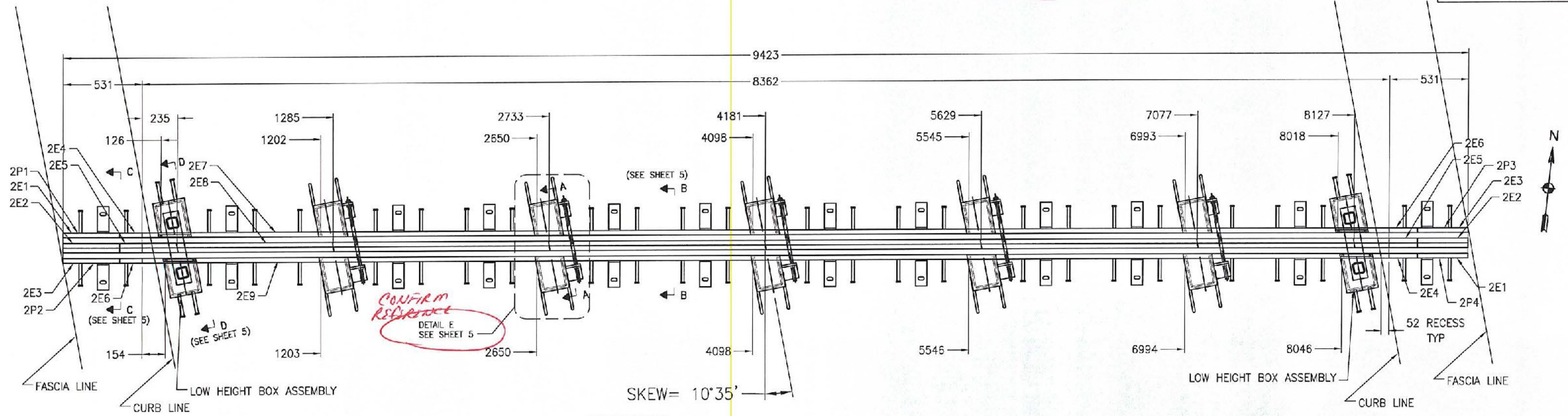


NOTE: SEE SHEET 4g AND 4 FOR STR126770P1S2 AND STR126770P5S2 JOINT PROFILE RESPECTIVELY.

*CONFIRM REFERENCES*

NOTE: EXPANSION JOINT DESIGN AND FABRICATED AT A JOINT OPENING (DIM "J") OF 140 (MIDRANGE)



SEE CURB DETAILS ON SHEET 3

SEE CURB DETAILS ON SHEET 3

STR127660AA  
1 REQUIRED @ RAMP A ABUTMENT 2  
NTS

- NOTE:
- INSTALLATION WIDTH "J" AND DECK OPENING DIMENSION "A" TO BE DETERMINED BY ENGINEER.
  - MIN. ALLOWABLE JOINT OPENING = 64  
MAX. ALLOWABLE JOINT OPENING = 216

*ENSURE THIS SUPPORT BOX FITS WITHIN 400mm BLOCKOUT. REFER TO CONTRACT PLANS SHEET BR274*

**TVGA CONSULTANTS**

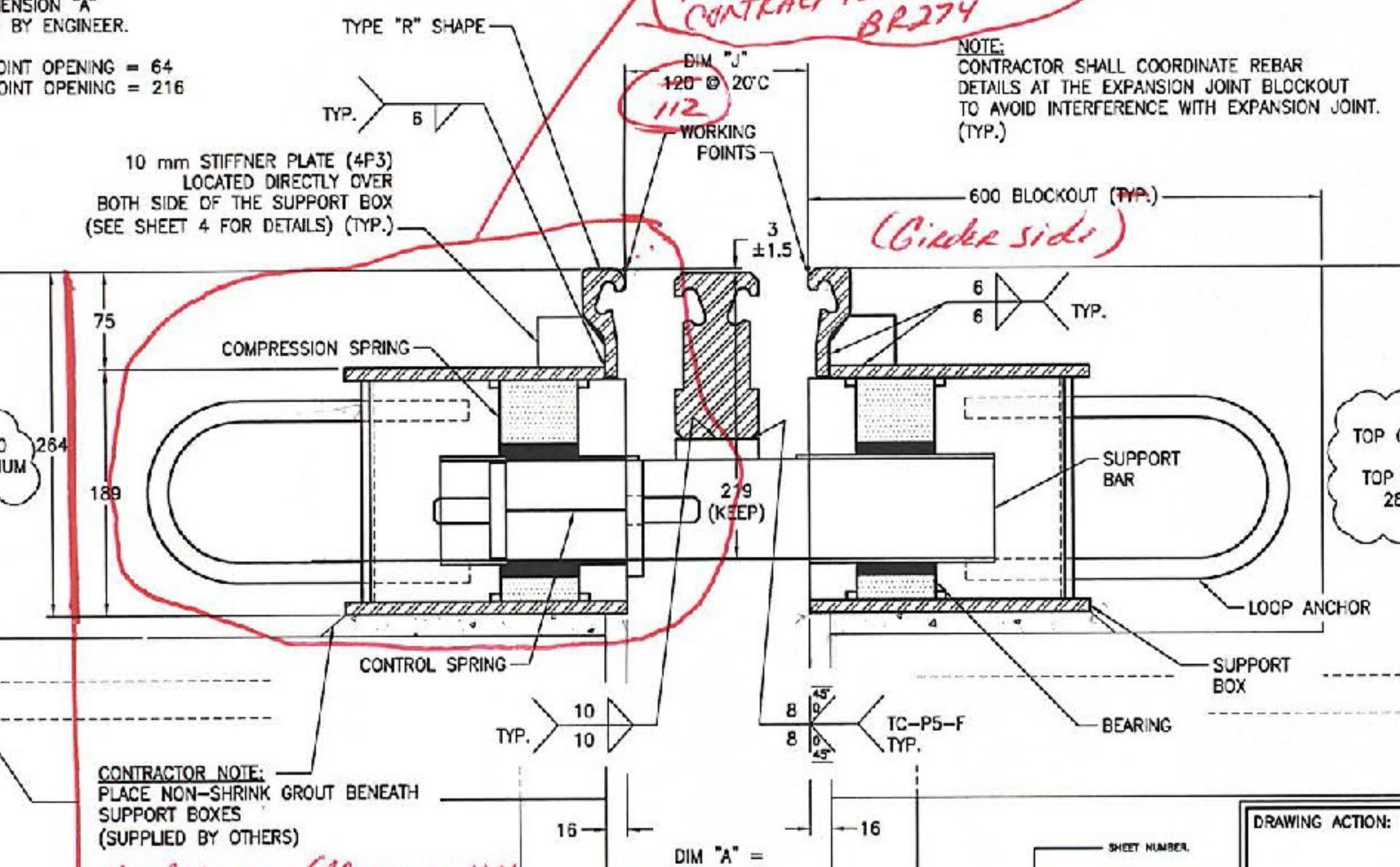
- NO EXCEPTIONS TAKEN  REJECTED  
 FURNISH AS CORRECTED  
 REVISE AND RESUBMIT

JOINT INFORMATION CHART		"J" DIMENSIONS					
W.B.A. PRODUCT NO.	LOCATION	-20" C	-10" C	0" C	10" C	20" C	30" C
STR126770AA	RAMP A ABUT.2	179	162	145	129	112	95

ENGINEER has reviewed Shop Drawings and Samples and other data which Contractor is required to submit, only for compliance with the information given in the Contract Documents and compatibility with the design concept of the completed Project as a functioning whole as indicated in the Contract Documents. Such reviews do not extend to means, methods, techniques, sequences or procedures of construction or to safety precautions and programs incident thereto. Such reviews do not extend to any LEED certification or accreditation. Contractor is responsible for dimensions to be confirmed and correlated at the job site, for information that pertains solely to the fabrication processes or to techniques of construction, and for coordination of the work of all trades.

**INSPECTION REQUIRED**

BY: *[Signature]*  
DATE: 6/2/10



REINFORCEMENT NOTE:  
AT THE TIME OF REINFORCEMENT PLACEMENT, THE EXPANSION JOINT BLOCKOUT AREA SHALL BE LAYED OUT, INCLUDING MODULAR EXPANSION JOINT SUPPORT BOX LOCATIONS. ANY MINOR RELOCATION OF REINFORCEMENT SHALL BE MADE AT THIS TIME TO AVOID INTERFERENCE WITH THE MODULAR EXPANSION JOINT SUPPORT BOXES AND/OR ANCHORAGES. WATSON BOWMAN ACME CORP. DOES NOT REQUIRE ADDITIONAL REBAR BE PLACED FOR THE PROPER FUNCTIONING OF THE MODULAR EXPANSION JOINT.

DIM "A" = 120 @ 20°C  
DIM "J" = 140 @ 20°C  
*144*

DRAWING ACTION:  
**SUBMITTED FOR APPROVAL**  
1/20/10

Information provided herein, including but not limited to, any drawing, design, photograph, graphic, or statement(s) ("Materials") are proprietary and the property of Watson Bowman Acme Corporation ("Company"). Reproduction, transmission, or reduction to any electronic medium or machine readable form, in whole or part, is strictly prohibited, except for the express purpose for which it has been furnished, without prior written consent of Company. All Materials contained herein are provided by Company for information purposes only. Company reserves the right to amend or withdraw any information contained in the Materials without notice. All technical or other advice by Company, whether verbal or written, concerning products, or the use of products in specific situations ("Advice") is given by Company and is used at the User's own risk.

VERMONT AGENCY OF TRANSPORTATION  
 COUNTY: BENNINGTON  
 PROJECT NO.: AC NH 019-1(51)  
 CAPITAL PROJECT ID NO.: -  
 BRIDGE NO.: B15, B15N, B15S  
 WBA PRODUCT DESCRIPTION: MODULAR  
 WBA PRODUCT NO.: STM126770AA

WATSON BOWMAN ACME  
 98 Phoenix Drive  
 Arden, NY 14208  
 Phone: (716) 934-2525  
 Fax: (716) 931-8229  
 www.wbacoop.com

**BASF**  
The Chemical Company

DESIGNED BY	TPH	DATE	12/23/09
CHECKED BY	TEB	DATE	1/7/10
SCALE	NTS	WBA JOB NO.	126770
SHEET NO.	2 of 14	DRAWING NO.	B-27569