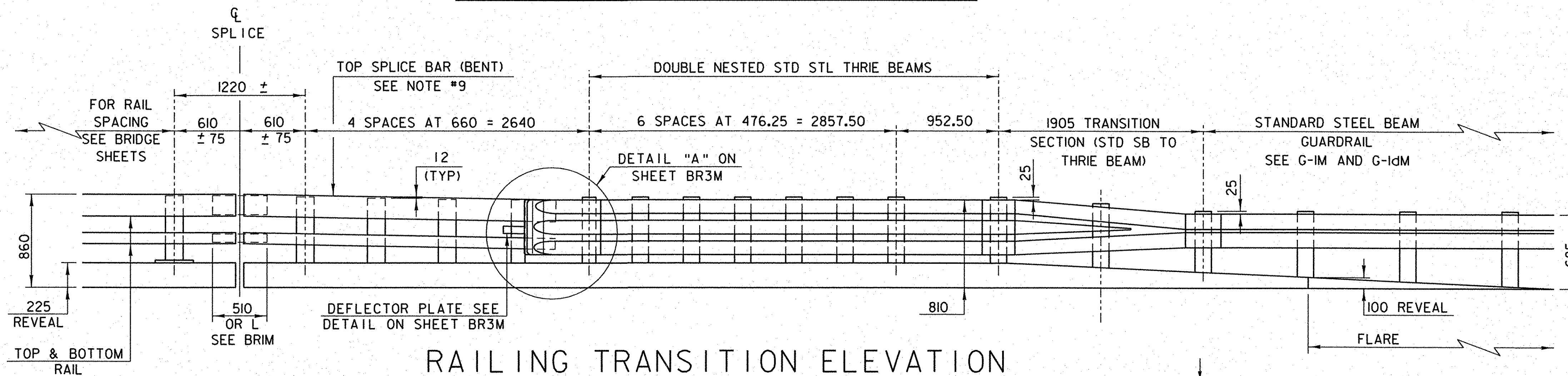
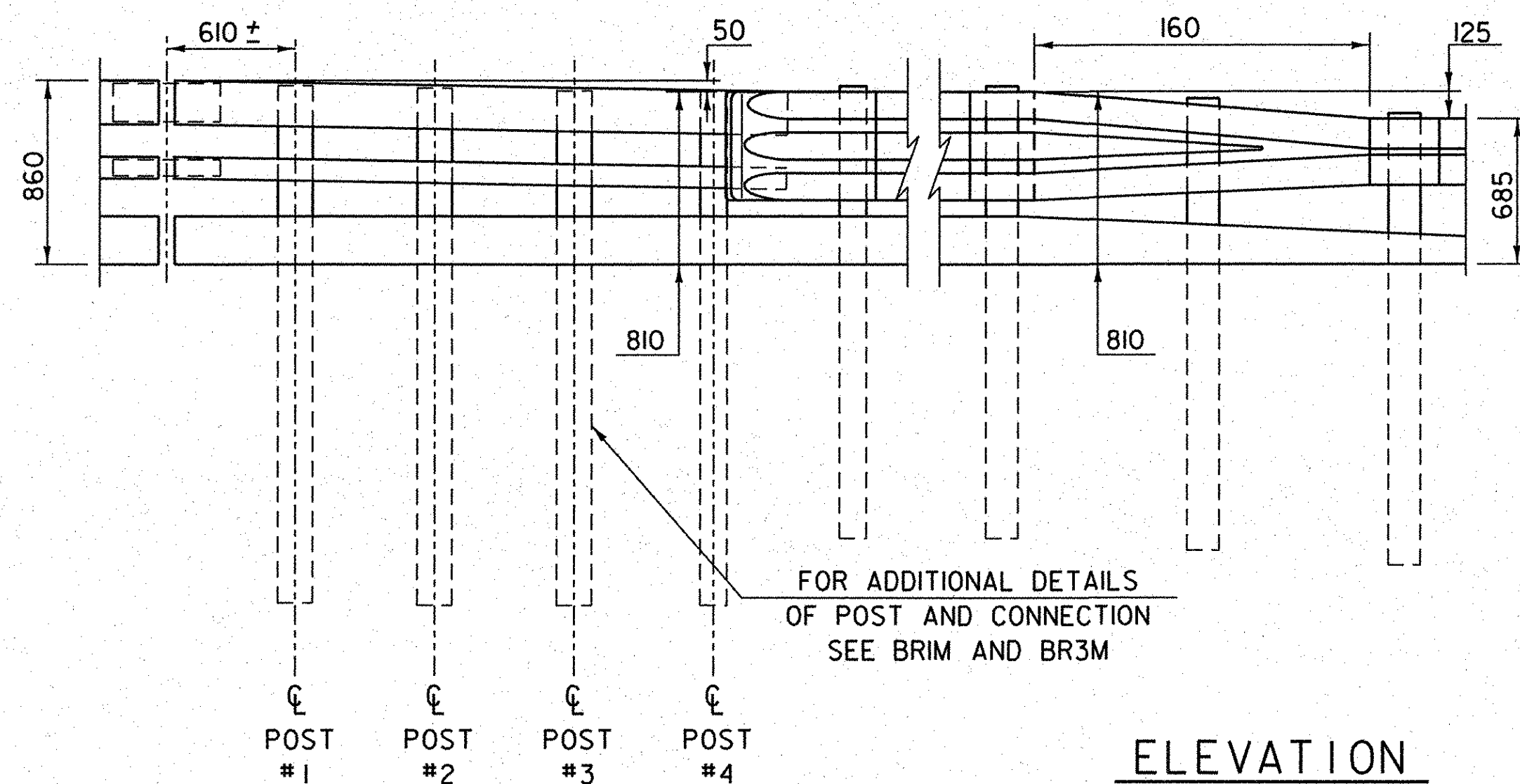


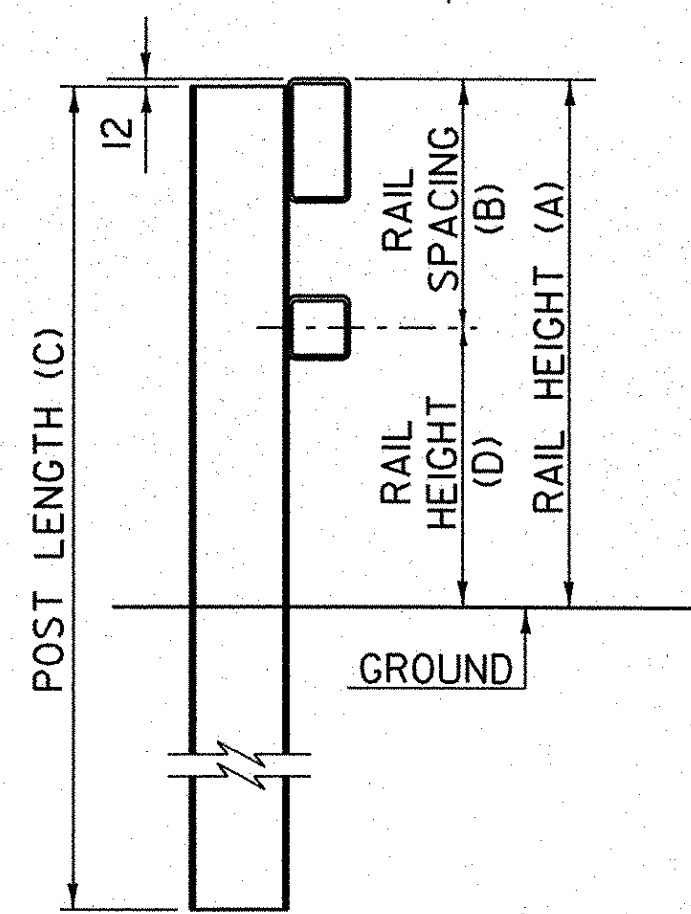
RAILING TRANSITION PLAN



RAILING TRANSITION ELEVATION

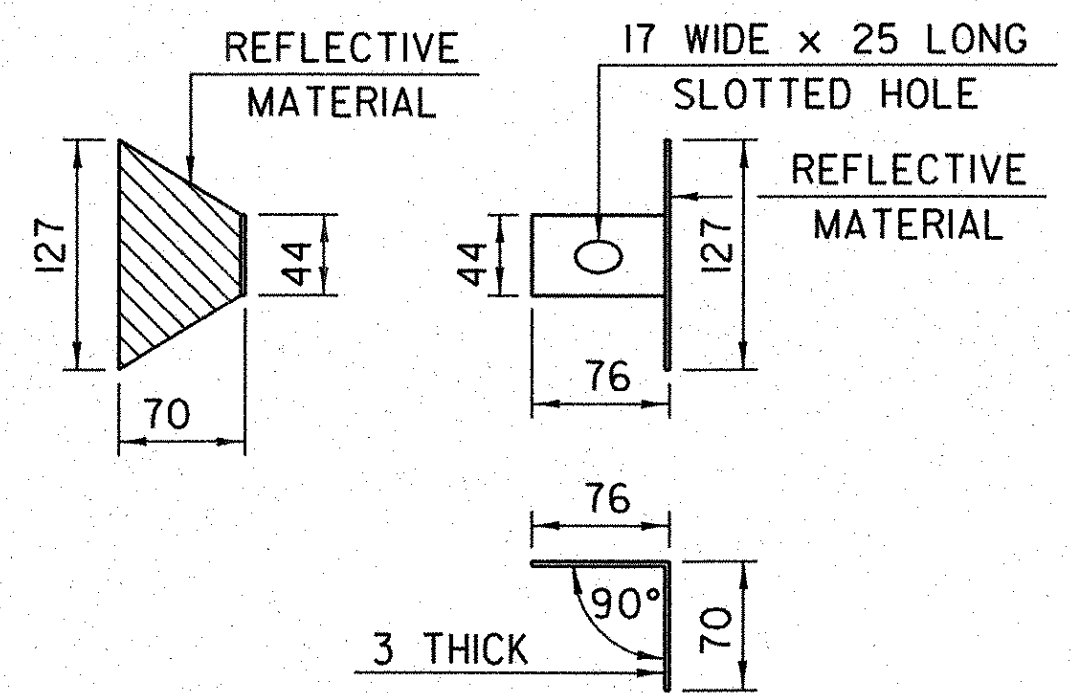


ELEVATION



TYPICAL SECTION

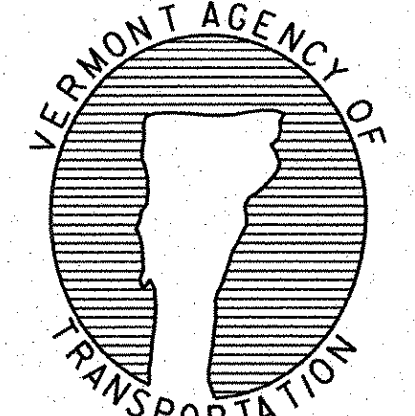
POST NUMBER	RAIL HEIGHT (A)	RAIL SPACING (B)	POST LENGTH (C)	RAIL HEIGHT (D)
1	850	400	2440	450
2	840	395	2440	445
3	825	385	2440	440
4	810	375	2440	435



DELINEATION DEVICE DETAILS

NOTES

1. REFER TO SHEET BRIM FOR ADDITIONAL DETAILS, NOTES AND MATERIAL SPECIFICATIONS.
2. PAYMENT FOR GUARD RAIL APPROACH SECTION - NETC 2 RAIL SHALL INCLUDE THE TERMINAL CONNECTOR, THE CONNECTION PLATE, THE DEFLECTOR PLATE, RAIL, POSTS, BLOCKS AND ATTACHMENT HARDWARE.
3. THE REFLECTORIZED ALUMINUM DELINEATION IS TO BE ERECTED EVERY 9m (OR CLOSEST POST) WITH A M16 BOLT. DELINEATORS SHALL MEET SPECIFICATION REQUIREMENTS FOR ASTM B209 ALLOY 5052-H32.
4. REFLECTIVE MATERIAL SHALL MEET REQUIREMENTS OF SUBSECTION 750.08 AND SHALL BE OF ENCAPSULATED LENS SILVER OR AMBER. AMBER IS TO BE INSTALLED ON THE DRIVER'S LEFT AND SILVER ON THEIR RIGHT.
5. ON BRIDGES WITH A SIDEWALK, DELINEATORS ARE NOT TO BE INSTALLED ON THE SIDEWALK SIDE OF THE BRIDGE (I.E. DELINEATORS INSTALLED ONLY ON THE CURB SIDE AND ON THE APPROACH ON THE CURB SIDE). PAYMENT SHALL BE SUBSIDIARY TO ALL OTHER ITEMS.
6. ALL APPROACH RAIL SPLICES SHALL BE LAPPED IN THE DIRECTION OF TRAFFIC FLOW.
7. ALL BRIDGE APPROACH RAIL MATERIALS, DIMENSION SIZES AND NOTES SHALL BE THE SAME AS THOSE OF THE BRIDGE RAIL, UNLESS OTHERWISE NOTED.
8. APPROACH RAIL BOLTS SHALL BE ASTM F568M, CLASS 4.6 AND NUTS SHALL BE AASHTO M291M (ASTM A563M GRADE A OR BETTER) (GALVANIZED). STEEL WASHERS SHALL BE ASTM F844M.
9. WELD TOP SPLICE BAR TO FIT BEND. USE COMPLETE PENETRATION WELD (B-U2).
10. THE CONCRETE CURB WILL BE PAID FOR AS ITEM 616.28, "CAST-IN-PLACE CONCRETE CURB, TYPE B."



DETAIL  
BR2M

BRIDGE RAIL - NETC 2 RAIL  
- THRIE BEAM APPROACH RAIL

Town Of	BENNINGTON	Bridge No.	B15, B15N, B15S
Highway No.	VT RTE 279	Log Sta.	
		Surv. Sta.	
VT ROUTE 279 & RAMPS OVER ROARING BRANCH OF WALLOOMSAC RIVER			
<b>BRIDGE RAILING - NETC 2 RAIL - THRIE BEAM RAIL</b>			
Designed By	VAOT	Drawn By	VAOT
Checked By	VAOT	Date	
		Bridge Design Supervisor	VAOT
		Date	
PROJECT	BENNINGTON	PROJECT NO.	AC NH 019-(K51)
TVGA CAD Drawing No.	AppGR2.dgn	Date	02/02/2009
Bridge Sheet No.	BR311	Sheet	298 of 367