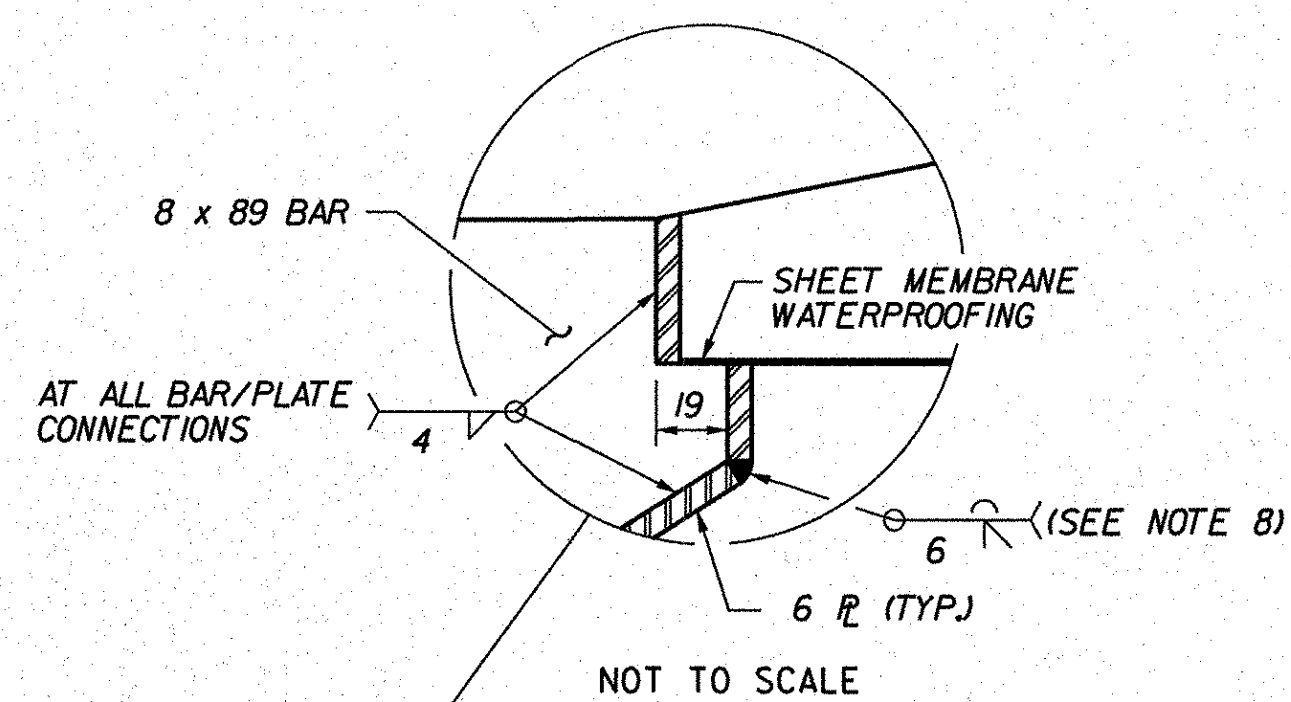
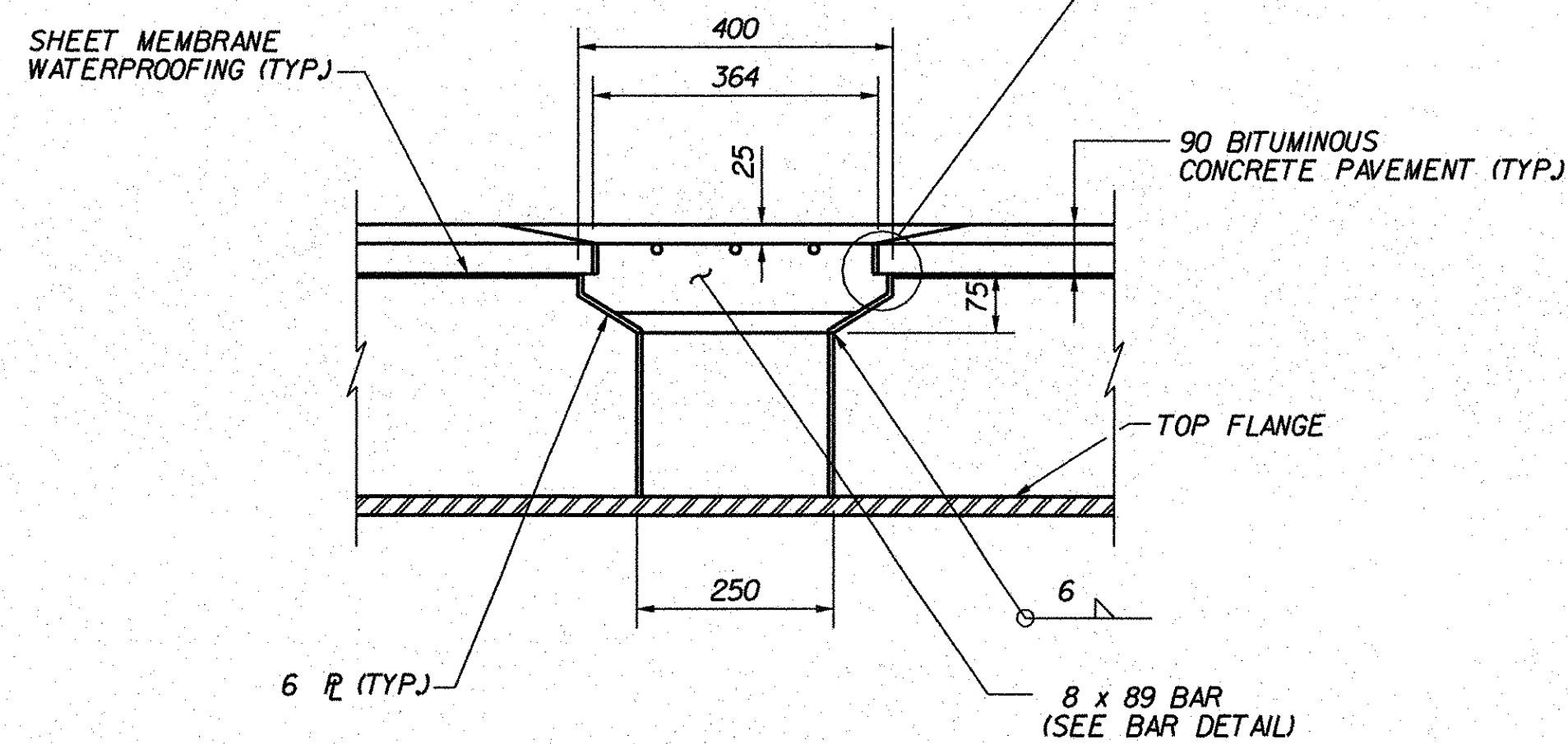


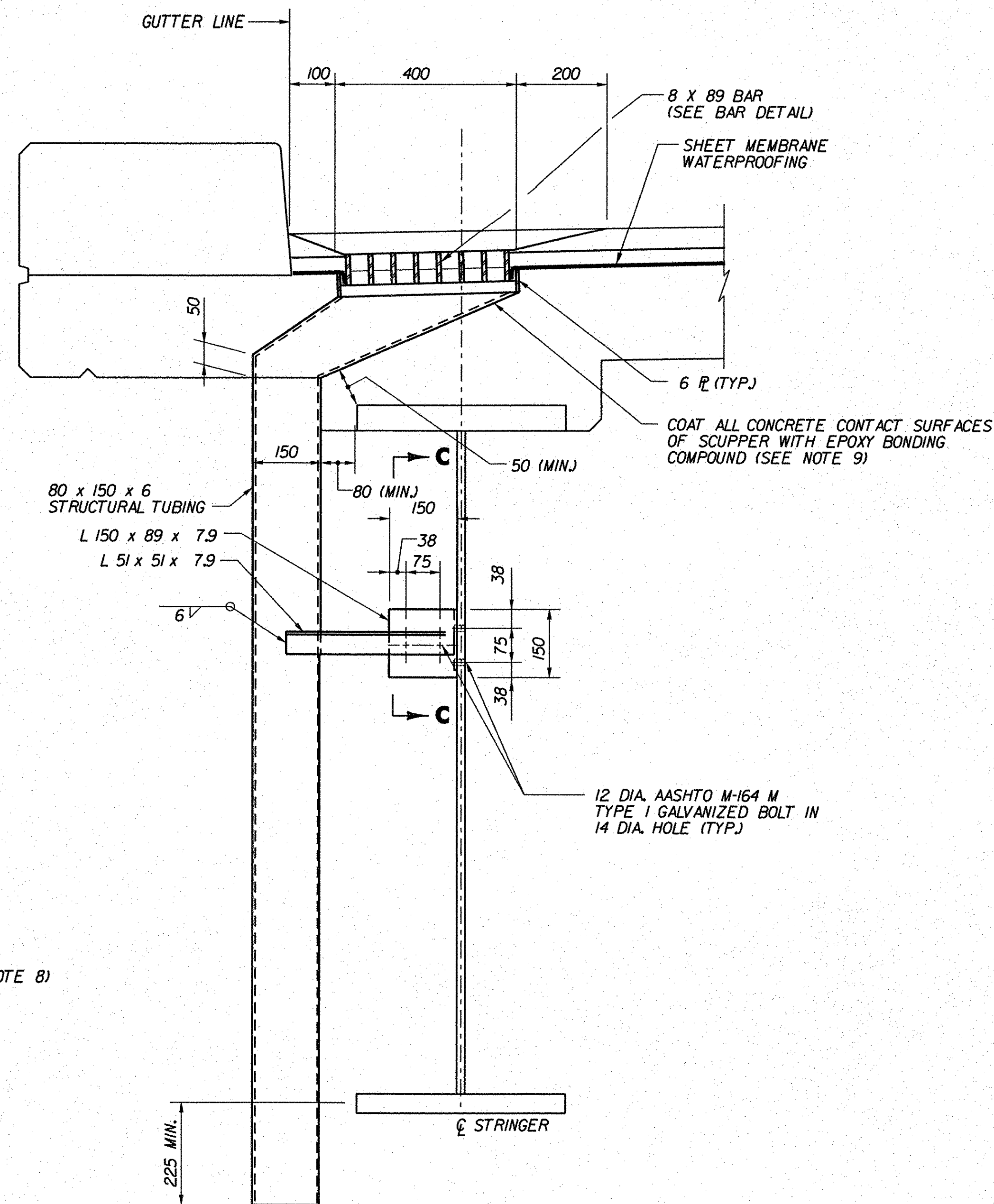
**PLAN**  
NOT TO SCALE



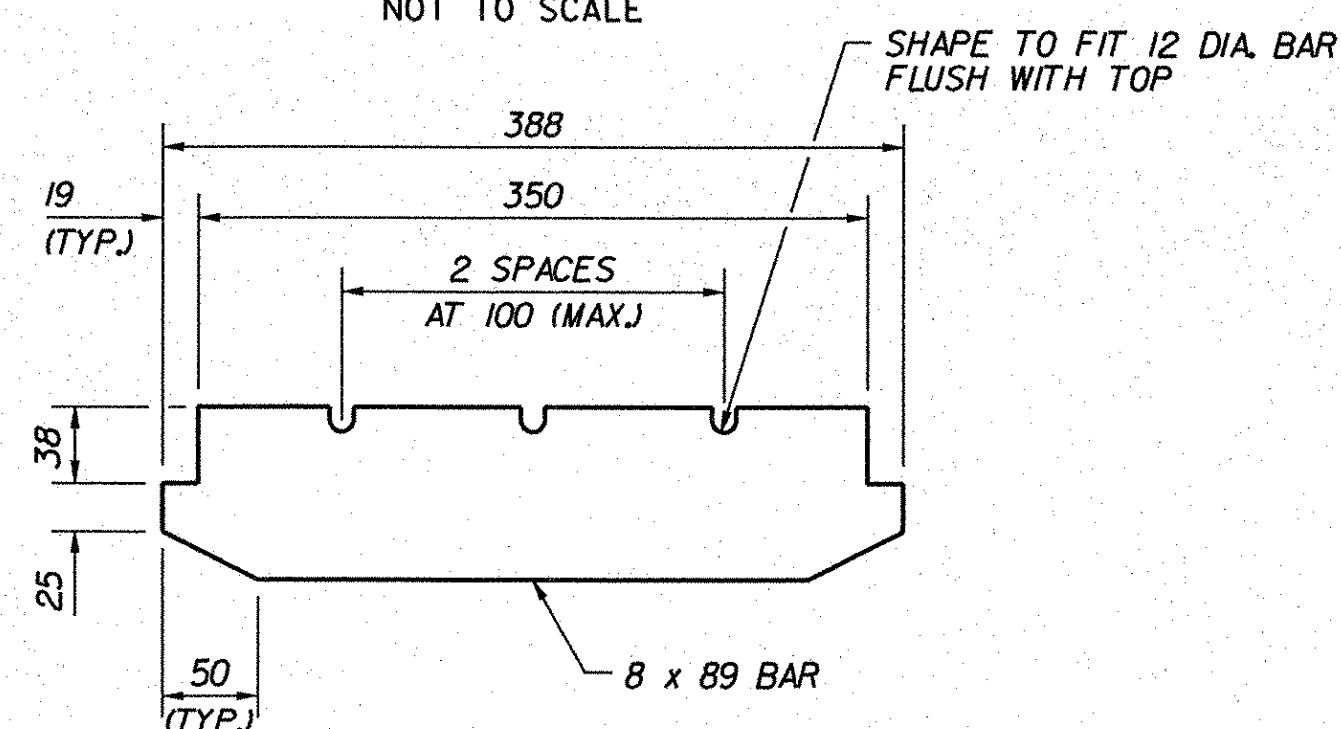
NOT TO SCALE



**SECTION B-B**  
NOT TO SCALE



**SECTION A-A**  
NOT TO SCALE

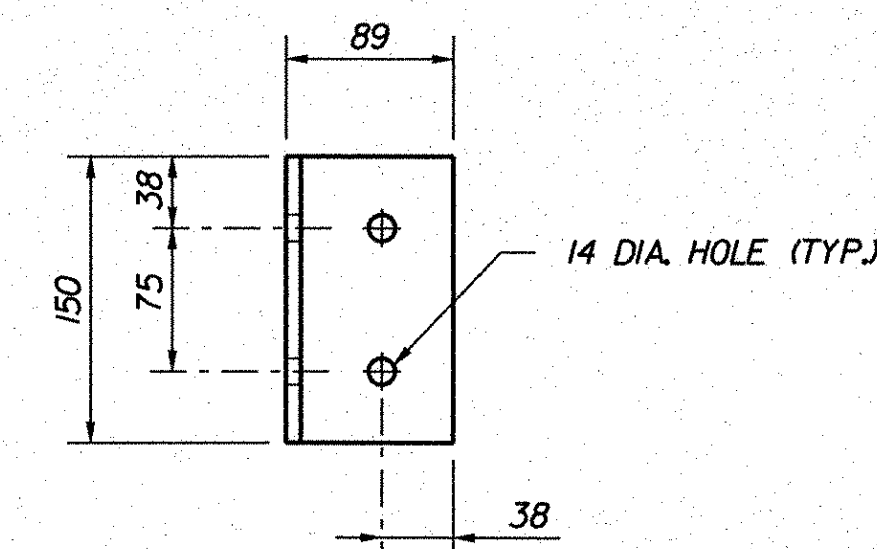


**BAR DETAIL**  
NOT TO SCALE

**TYPICAL SCUPPER DETAILS**  
RAMP D SHOWN RAMP A SIMILAR

**NOTES:**

- FOR LOCATION OF SCUPPERS, SEE FRAMING PLAN FOR EACH BRIDGE.
- STRUCTURAL STEEL TUBING SHALL CONFORM TO ASTM A-500 GRADE B OR A-501.
- ALL PLATES, BARS AND ANGLES SHALL CONFORM TO AASHTO M270/M270M, GRADE 250. ALL BOLTS, NUTS AND WASHERS SHALL CONFORM TO AASHTO M-164M, TYPE I.
- SCUPPERS, INCLUDING COMPONENTS REQUIRED FOR ATTACHMENT TO SUPERSTRUCTURE, SHALL BE GALVANIZED OR METALIZED AFTER FABRICATION, IN ACCORDANCE WITH SUBSECTION 506.15 OF THE SPECIFICATIONS.
- TOP SURFACE OF SCUPPERS MUST BE SLOPED TO MATCH ROADWAY CROSS SLOPE AND GRADE.
- THE BAR AND GRATE SECTION MAY BE PREFABRICATED PROVIDING THAT THE GEOMETRY AND SECTION PROPERTIES ARE EQUIVALENT TO THE DETAILS SHOWN.
- THE COST OF SCUPPERS SHALL BE PAID UNDER ITEM 506.56, "STRUCTURAL STEEL CURVED PLATE GIRDER."
- SCUPPER MAY BE FABRICATED BY BENDING PLATES AT THESE JOINTS IN LIEU OF A WELDED CONNECTION. INSIDE RADIUS SHALL BE NOT GREATER THAN 12. GEOMETRICS OF BENT SECTION SHALL CONFORM TO 1.5 FABRICATION TOLERANCE.
- AN ACCEPTABLE EPOXY BONDING COMPOUND SHALL BE SELECTED FROM THE APPROVED PRODUCTS LIST ON FILE WITH THE AGENCY'S MATERIALS AND RESEARCH SECTION. PAYMENT FOR EPOXY BONDING COMPOUND SHALL BE INCIDENTAL TO ITEM 501.33, "CONCRETE, HIGH PERFORMANCE CLASS A (FPO)."



**SECTION C-C**  
NOT TO SCALE

**STATE OF VERMONT**  
**AGENCY OF TRANSPORTATION**

Town Of	BENNINGTON	Bridge No.	BI5N
Highway No.	VT RTE 279	Log Sta.	
		Surv. Sta.	
VT ROUTE 279 & RAMPS OVER ROARING BRANCH OF WALLOOMSAC RIVER			

**TYPICAL SCUPPER DETAILS**

Designed By	B. CARLSON	Drawn By	D.S. URBINO
Checked By	B.J. CARLSON	Date	06/08
		Bridge Design Supervisor	K.M. WOJTKOWSKI
		Date	06/08
PROJECT	BENNINGTON	PROJECT NO.	AC NH 019-(151)
TVGA CAD Drawing No.	ScupperDet.dgn	Date	02/02/2009
Bridge Sheet No.	BR309	Sheet	296 of 367