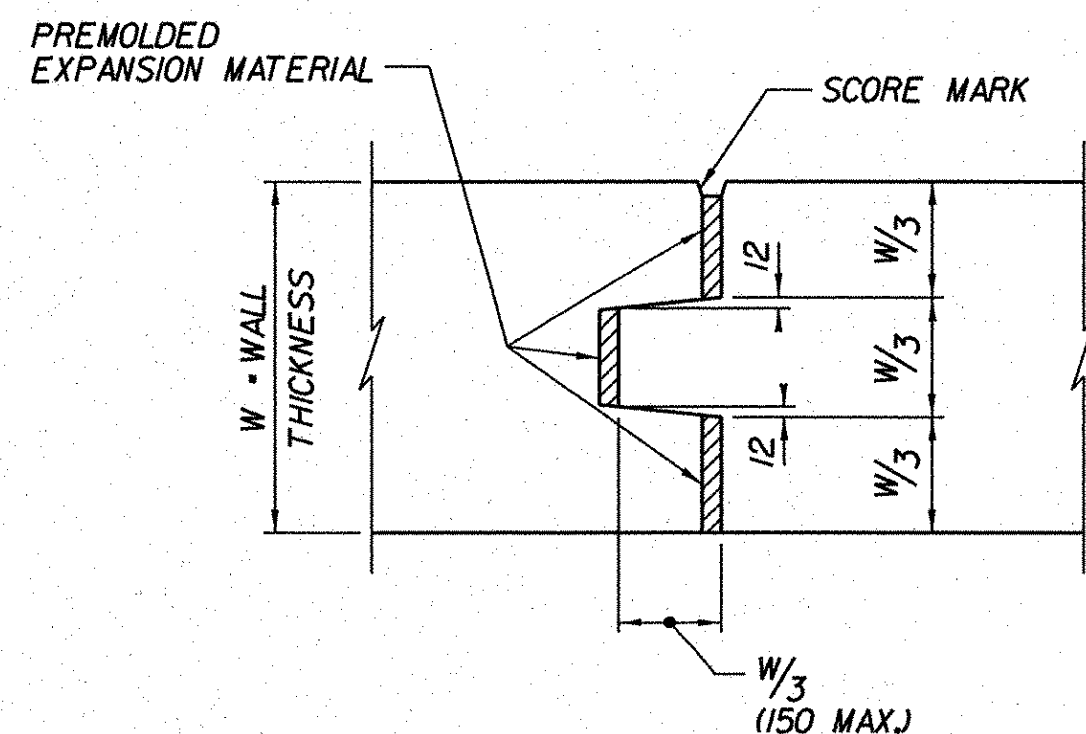
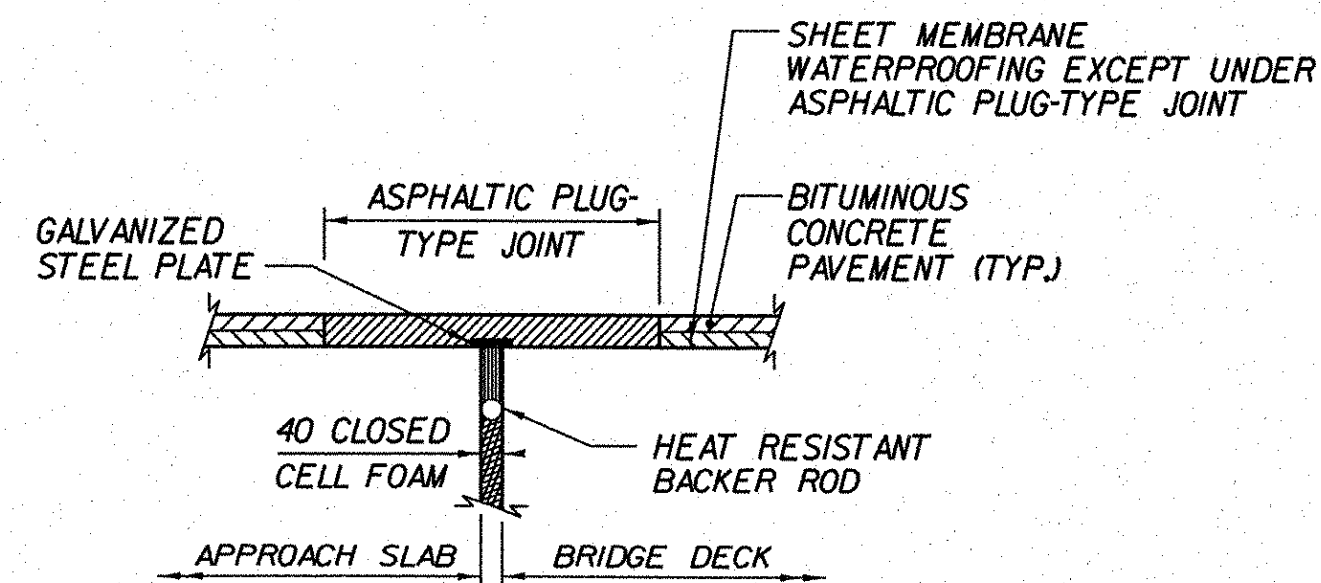


TYPICAL CONCRETE CONSTRUCTION JOINT
 NOT TO SCALE



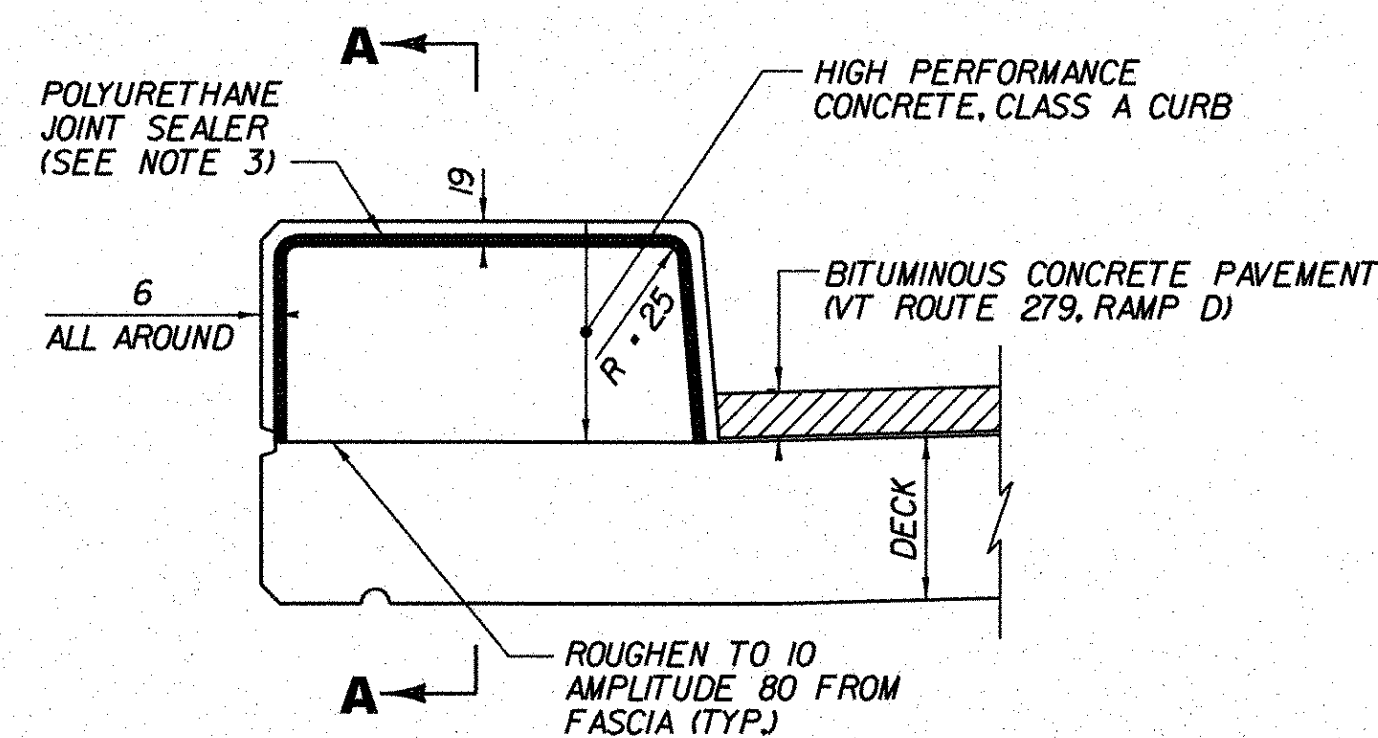
TYPICAL CONCRETE EXPANSION JOINT
 NOT TO SCALE



ASPHALTIC PLUG JOINT DETAIL
 NOT TO SCALE

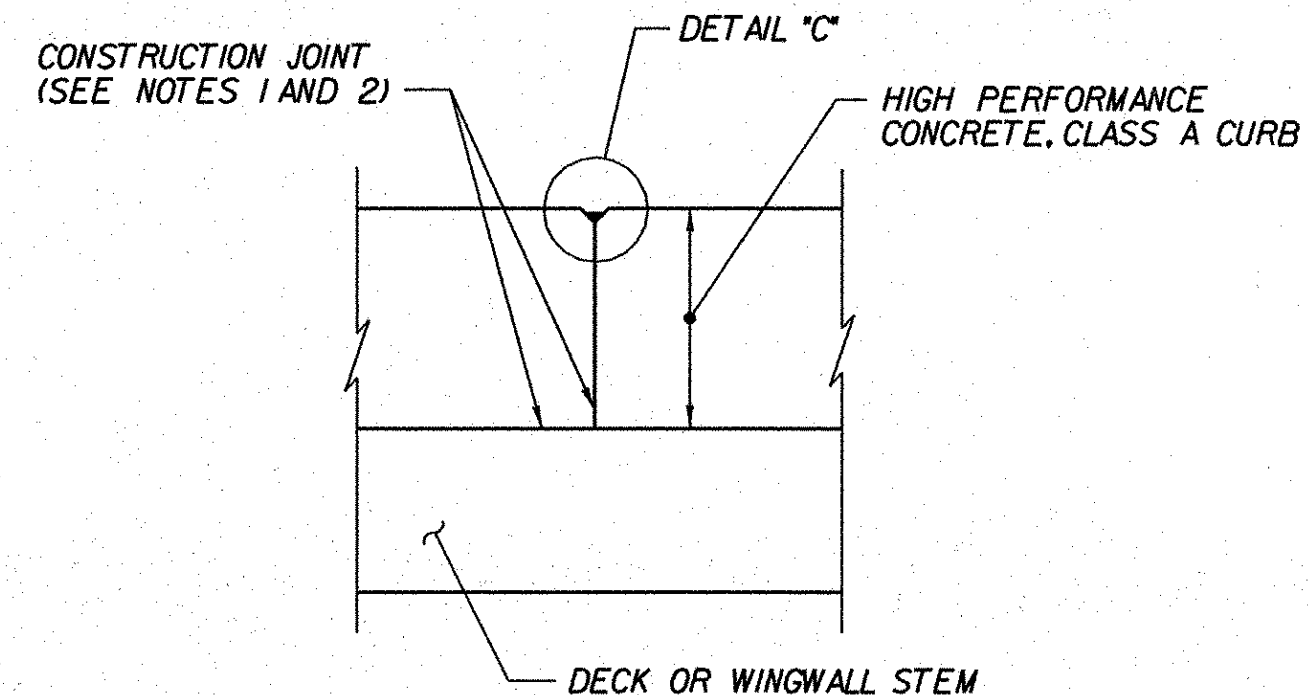
NOTES:

1. CONSTRUCTION JOINTS THROUGH CONCRETE CURB SHALL BE SPACED MAXIMUM 4.50 m CENTER TO CENTER AND SHALL BE 560 MINIMUM FROM THE CENTER OF THE NEAREST BRIDGE RAIL POST. CONCRETE SHALL BE PLACED IN ALTERNATING SECTIONS WITH A MINIMUM OF 48 HOURS DELAY BETWEEN ADJACENT POURS.
2. LONGITUDINAL REINFORCING SHALL PASS THROUGH CONCRETE CURB CONSTRUCTION JOINTS.
3. POLYURETHANE JOINT SEALER, PER SUBSECTION 524.06(c) OF THE SPECIFICATIONS, COLOR TO MATCH CONCRETE. COST SHALL BE INCIDENTAL TO ITEM 501.33, "CONCRETE, HIGH PERFORMANCE CLASS A (FPO)."
4. THE USE OF SIPCMF IS ALLOWED FOR THIS PROJECT. THE COST OF SIPCMF WILL BE INCLUDED IN THE UNIT PRICE BID FOR PAY ITEM 501.33, "CONCRETE HIGH PERFORMANCE CLASS A (FPO)."
5. TACK WELDS SHALL BE ALLOWED IN THE COMPRESSION AREAS OF THE GIRDER TOP FLANGE ONLY. REFER TO GIRDER ELEVATION BRIDGE SHEETS BR266 AND BR287 FOR LOCATIONS OF GIRDER DEAD LOAD CONTRAFLEXURE POINTS AND GIRDER TOP FLANGE TENSION ZONES.
6. FORMS AND SUPPORT ANGLES SHALL CONFORM TO SUBSECTION 715.05 OF THE SPECIFICATIONS.
7. FILL FORM CORRUGATIONS WITH STYROFOAM OR OTHER LIGHTWEIGHT MATERIAL AS APPROVED BY THE ENGINEER PRIOR TO DECK PLACEMENT.
8. FOR ASPHALTIC PLUG JOINT NOTES, SEE GENERAL NOTES, BRIDGE SHEET BR245.



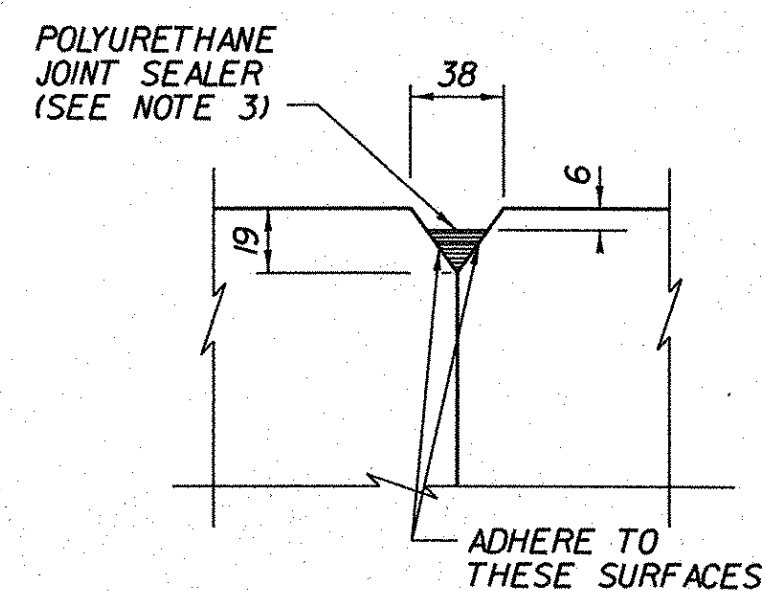
NOTE: DECK JOINT SHOWN, WINGWALL JOINT SIMILAR.

TYPICAL SECTION THRU CONCRETE CURB CONSTRUCTION JOINT

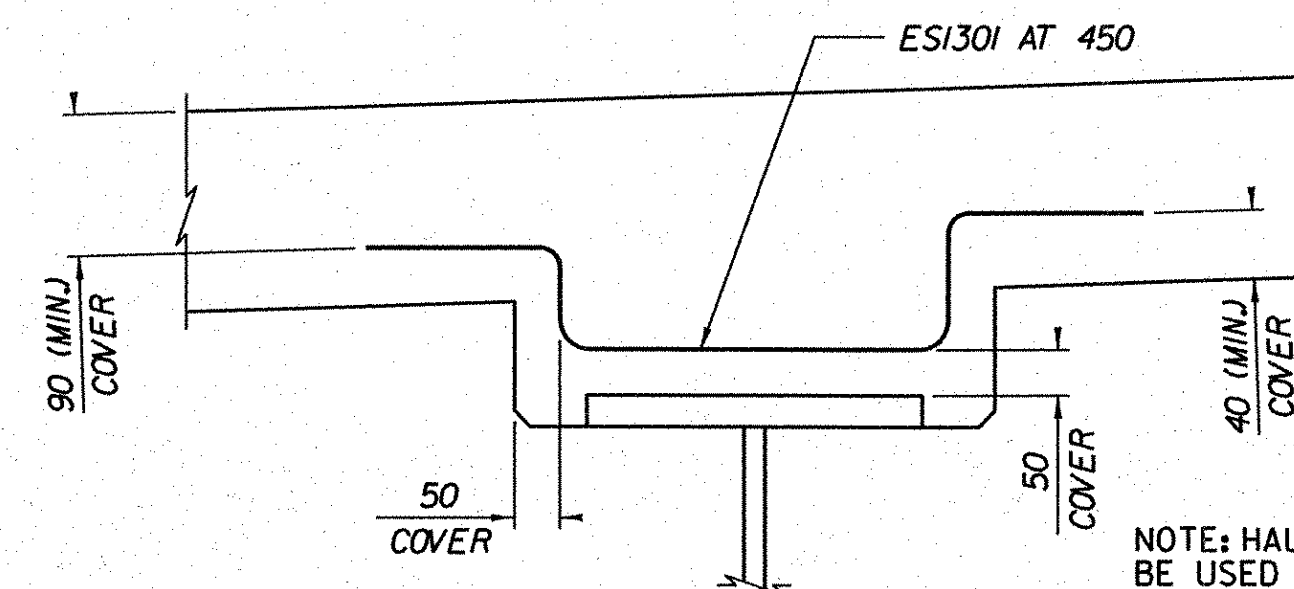


SECTION A-A

CURB JOINT DETAILS
 NOT TO SCALE

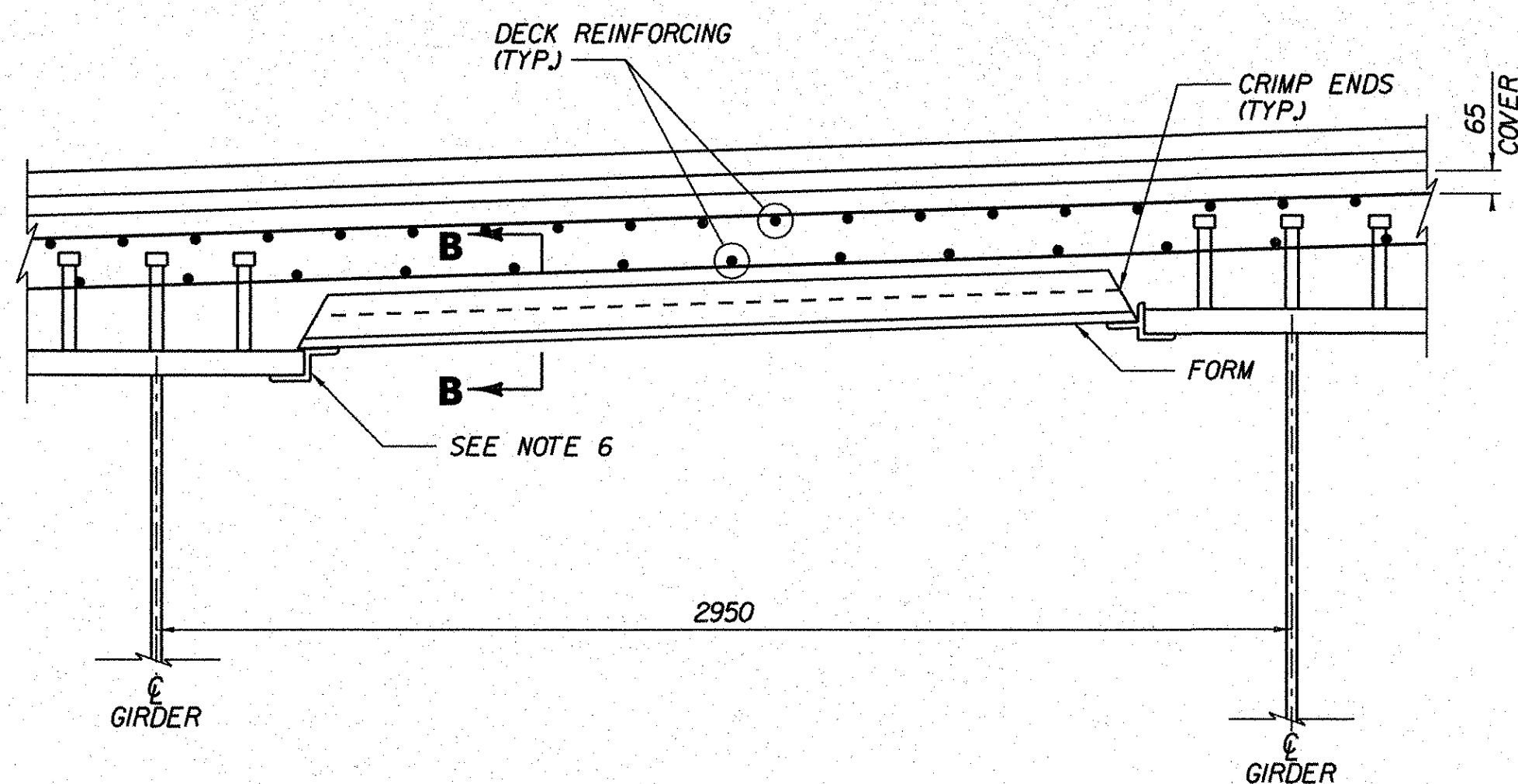


DETAIL "C"

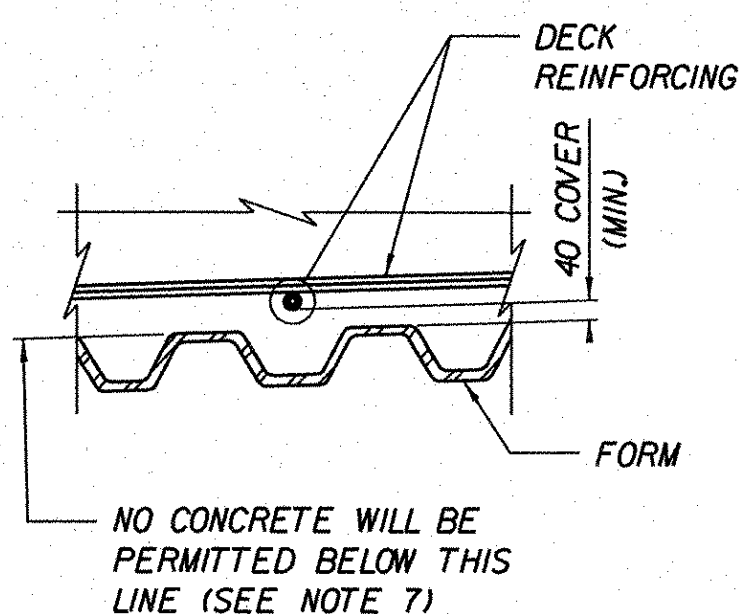


NOTE: HAUNCH REINFORCEMENT TO BE USED WHEN THE DEPTH OF THE HAUNCH AT GIRDER CENTERLINE EXCEEDS 100 OR AS ORDERED BY THE ENGINEER.

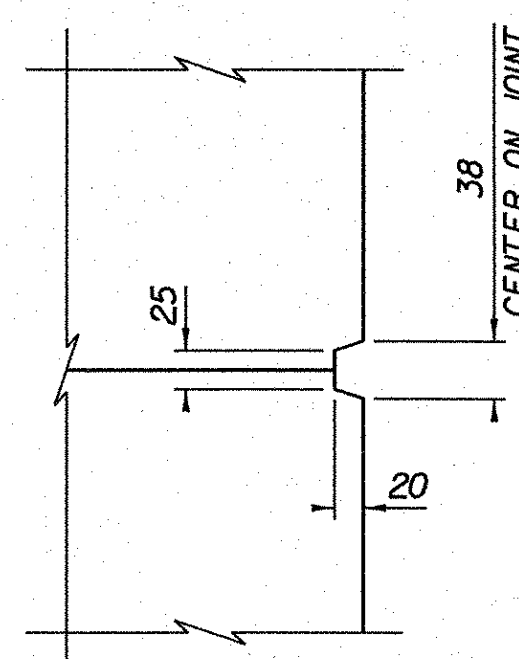
REINFORCED GIRDER HAUNCH DETAIL
 NOT TO SCALE



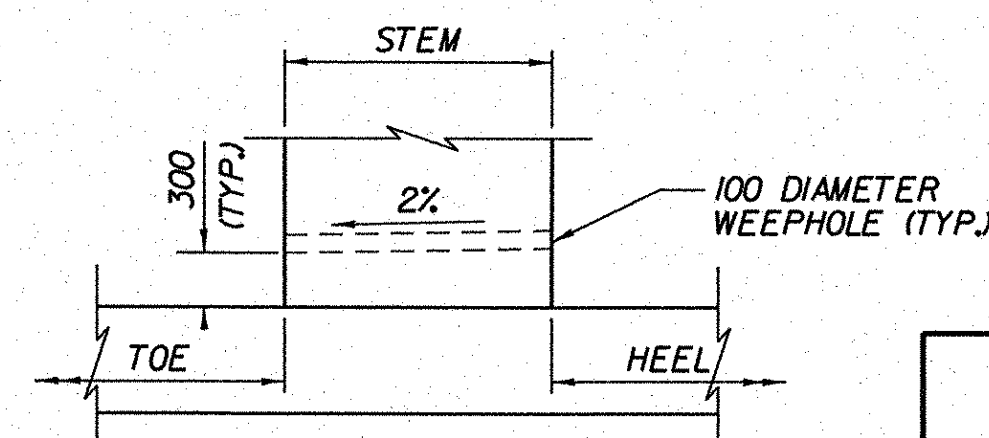
STAY-IN-PLACE FORM DETAIL
 NOT TO SCALE



SECTION B-B
 NOT TO SCALE



SCORE MARK DETAIL
 NOT TO SCALE



WEEPHOLE DETAIL
 NOT TO SCALE

STATE OF VERMONT AGENCY OF TRANSPORTATION		
Town Of	BENNINGTON	Bridge No. B15, B15N, B15S
Highway No.	VT RTE 279	Log Sta. Surv. Sta.
VT ROUTE 279 & RAMPS OVER ROARING BRANCH OF WALLOOMSAC RIVER		
TYPICAL BRIDGE DETAILS		
Designed By	J.J. MANUSE	Drawn By A.S. WOODS
Checked By	B.J. CARLSON	Date 04/08
		Bridge Design Supervisor K.M. WOJTKOWSKI Date 04/08
PROJECT	BENNINGTON	PROJECT NO. AC NH 019-1(51)
TVGA CAD Drawing No.	BridgeDet.dgn	Date 02/02/2009
Bridge Sheet No.	BR305	Sheet 292 of 367