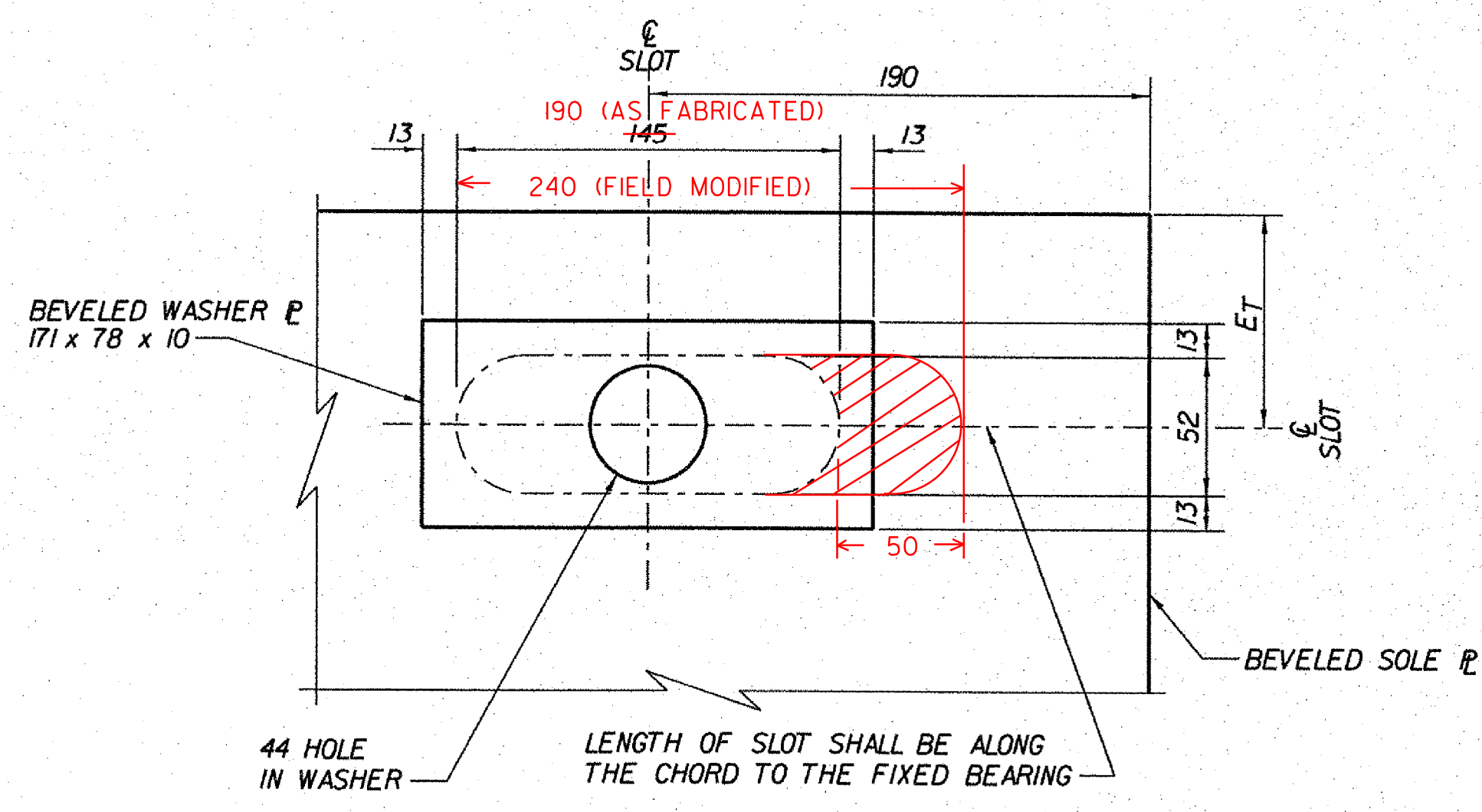


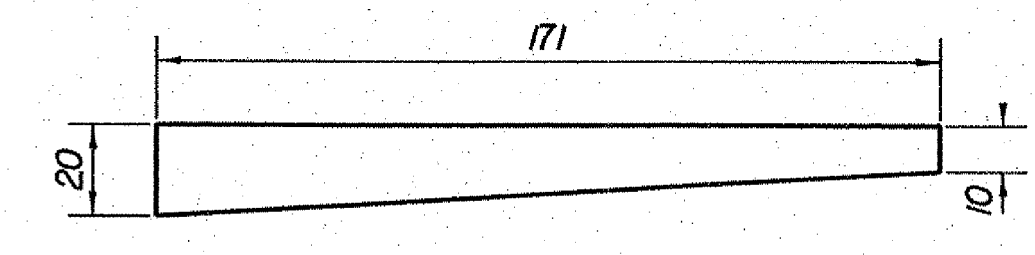
EXPANSION BEARING
NOT TO SCALE



SLOTTED HOLE DETAIL
NOT TO SCALE

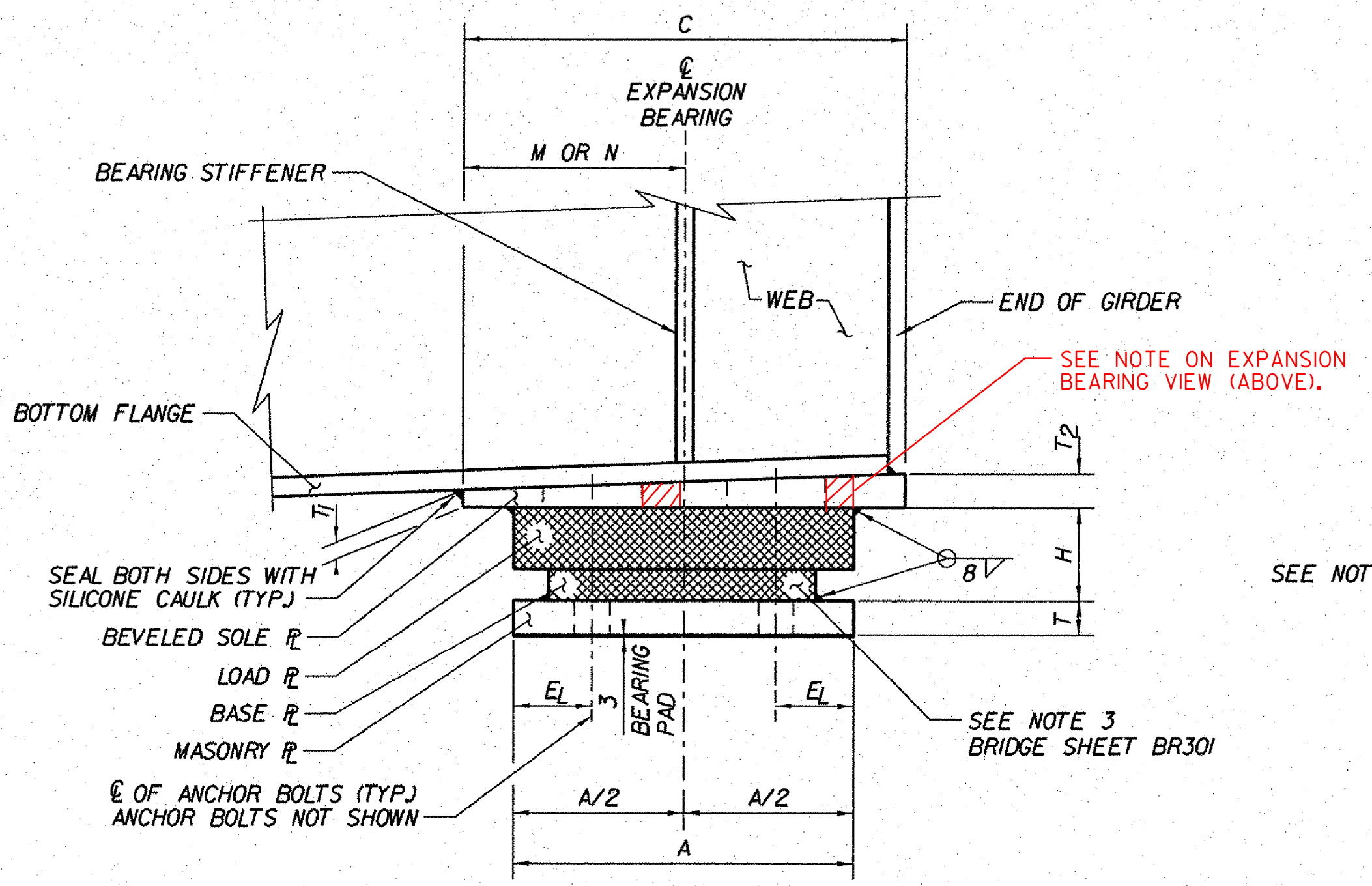
NOTES:

- FOR BEARING NOTES, SEE BRIDGE SHEET BR301.
- "M" AND "N" ARE PROVIDED TO ASSIST THE CONTRACTOR IN SETTING THE SOLE PLATE. "M" IS THE DISTANCE FROM THE CENTERLINE OF BEARINGS TO THE FRONT EDGE OF THE SOLE PLATE WITH BEAM AND DIAPHRAGM LOADS ON THE BEARINGS. "N" IS THE DISTANCE FROM THE CENTERLINE OF BEARINGS TO THE FRONT EDGE OF THE SOLE PLATE WITH ALL DEAD AND SUPERIMPOSED DEAD LOADS ON THE BEARINGS. THE VALUES FOR "M" AND "N" ARE BASED ON THE THEORETICAL CAMBER VALUES SHOWN ON THE PLANS. IF THE CAMBER OF THE BEAMS ARE DIFFERENT THAN THE THEORETICAL VALUES, DIFFERENT "M" AND "N" VALUES MAY BE NEEDED.

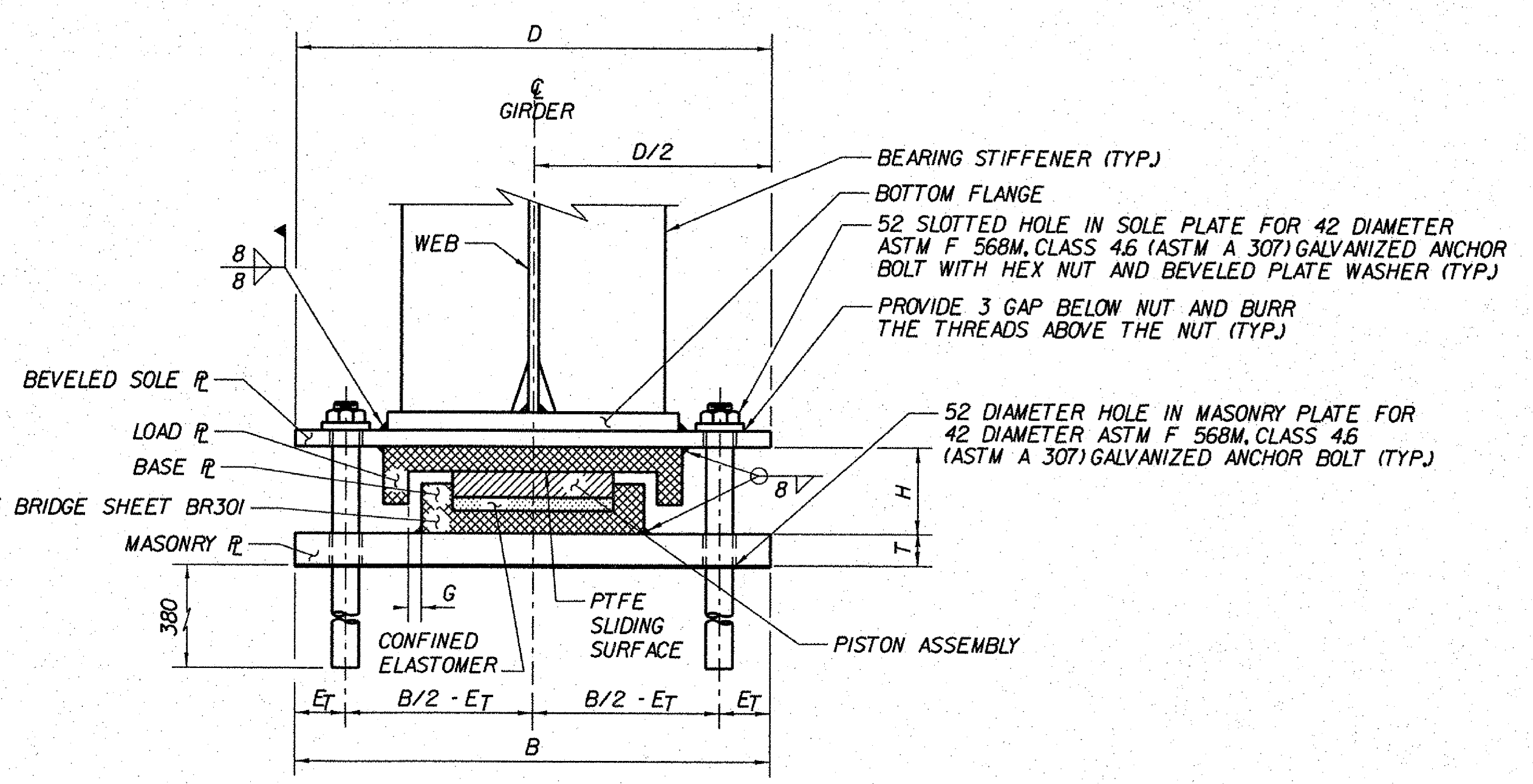


BEVELED PLATE WASHER ELEVATION
NOT TO SCALE

SOLE PLATE SETTING TABLE									
RAMP	GIRDER	GIRDER	GIRDER	GIRDER	GIRDER	GIRDER	GIRDER	GIRDER	
RAMP A	TEMPERATURE	"M"	"N"	"M"	"N"	"M"	"N"	"M"	"N"
	-30° C	442	409	442	409	440	409	439	409
	-20° C	426	392	425	392	424	392	422	392
	-10° C	409	376	408	376	407	376	406	376
	0° C	392	359	391	359	390	359	389	359
RAMP D	TEMPERATURE	"M"	"N"	"M"	"N"	"M"	"N"	"M"	"N"
	-30° C	446	410	446	410	445	410	444	410
	-20° C	429	393	429	393	428	393	427	393
	-10° C	412	376	412	376	411	376	410	376
	0° C	396	359	395	359	394	359	393	359



ELEVATION A-A
NOT TO SCALE



SECTION B-B
NOT TO SCALE

SKEW TO LOCAL TANGENT

BRIDGE NO.	LOCATION	ABUTMENT 2
RAMP A	GIRDER 1	12'31"15.2"
	GIRDER 2	12'31"22.2"
	GIRDER 3	12'30"29.4"
	GIRDER 4	12'29"36.6"
RAMP D	GIRDER 1	15'23"10.7"
	GIRDER 2	15'21"29.3"
	GIRDER 3	15'19"48.3"
	GIRDER 4	15'18"7.6"

STATE OF VERMONT AGENCY OF TRANSPORTATION

Town Of	BENNINGTON	Bridge No.	BI5, B15N, B15S
Highway No.	VT RTE 279	Log Sta.	
		Surv. Sta.	
VT ROUTE 279 & RAMPS OVER ROARING BRANCH OF WALLOOMASAC RIVER			
ABUTMENT 2 EXPANSION BEARING DETAILS			
Designed By	A. ODJEN	Drawn By	D. SHAFFER
Checked By	B.J. CARLSON	Date	05/08
		Bridge Design Supervisor	K.M. WOJTKOWSKI Date 05/08
PROJECT	BENNINGTON	PROJECT NO.	AC NH 019-(K51)
TVGA CAD Drawing No. BEARINGS.dgn		Date 02/02/2009	
Bridge Sheet No. BR303		Sheet 290 of 367	

ABUTMENT 2 EXPANSION BEARING GEOMETRY																					
BRIDGE NO.	SUB-STRUCTURE NO.	LOCATION	QTY. REQUIRED	MAX. VERT. LOAD (KN)	MAX. HORIZ. LOAD (KN)	DL+SDL (KN)	LL WITH 1 (KN)	ONE WAY LONG MOVEMENT	GUIDE CLEARANCE, C	ROTATION CAPACITY (RADIAN)	MASONRY PL				SOLE PL				BRG. ANCHOR BOLTS		
											A	B	T	C	D	T ₁	T ₂	H	DIA.	E _T	E _L
RAMP A	ABUT. 2	ALL	4	754	77	382	372	91	3	0.014	500	750	48	650	750	25	61	126	42	80	115
RAMP D	ABUT. 2	ALL	4	822	89	445	377	92	3	0.014	500	750	51	650	750	25	62	126	42	80	115

