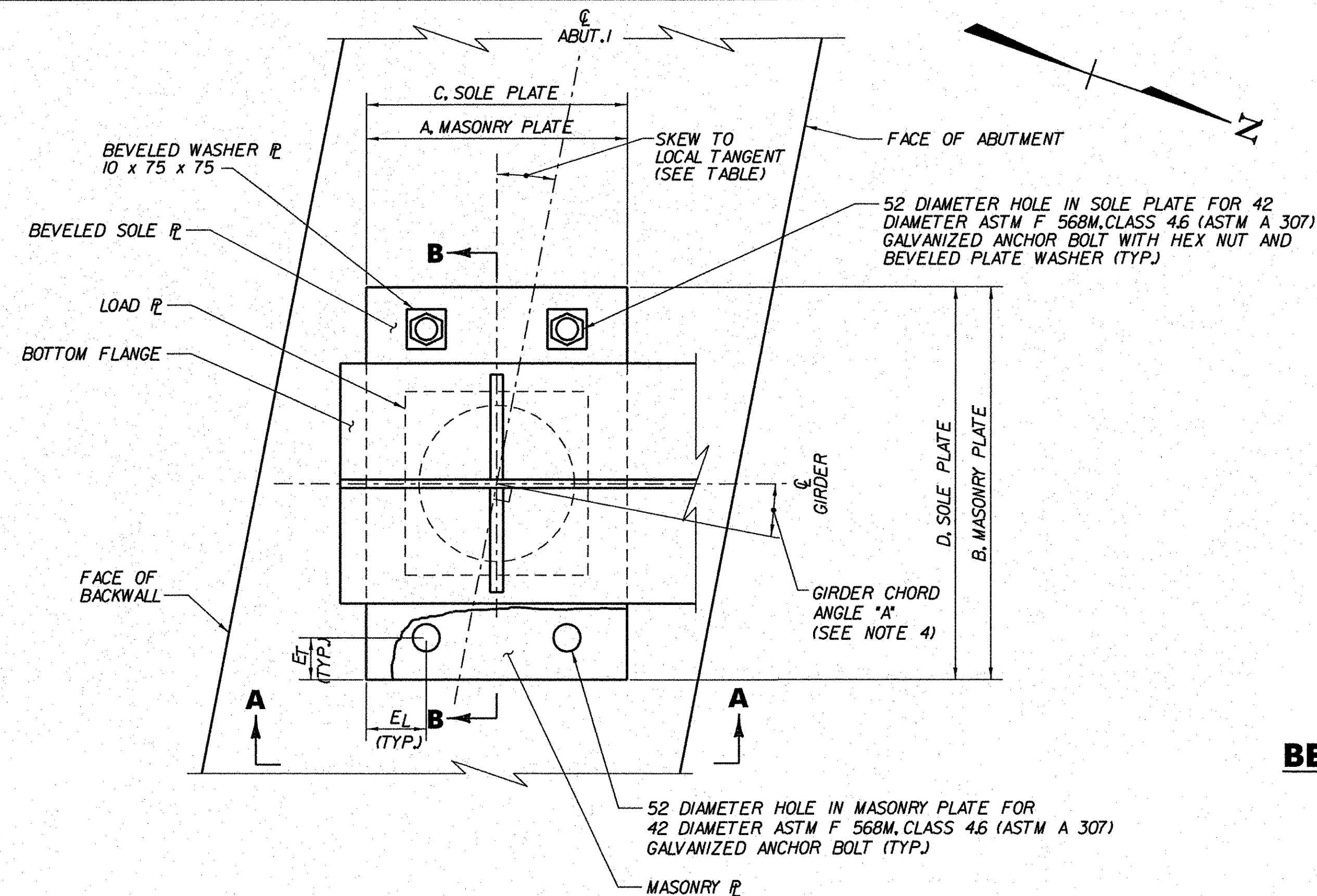
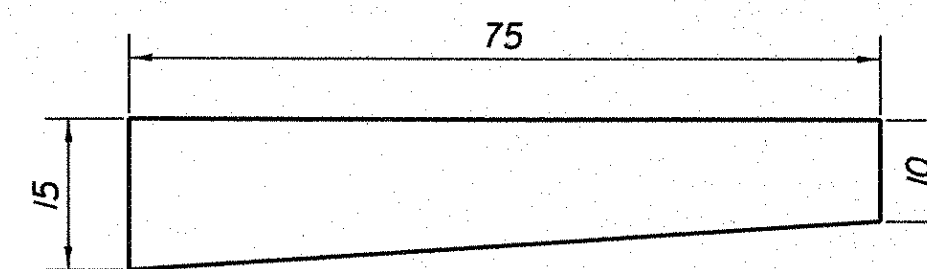


NOTES:

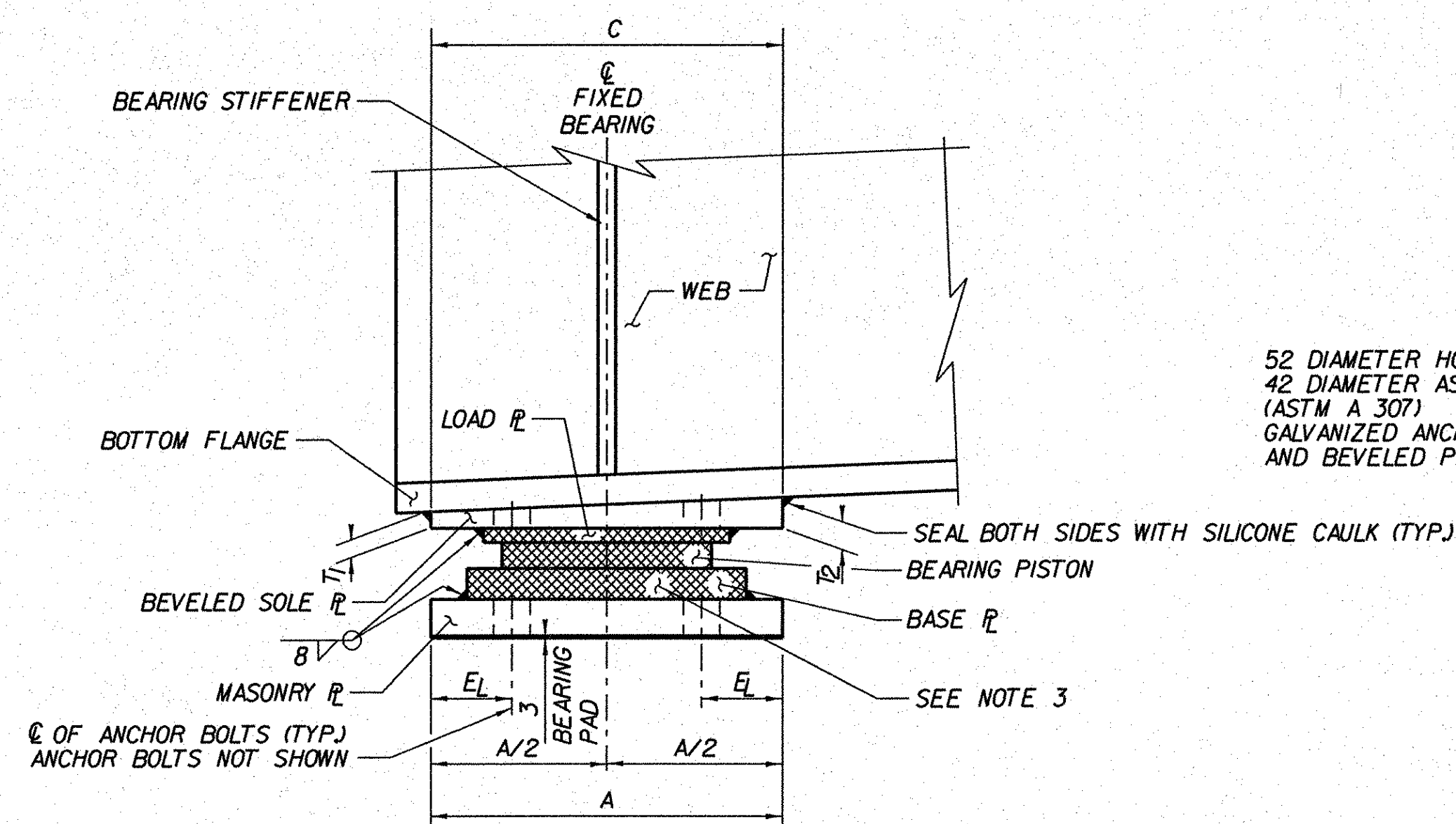
1. BEARINGS SHALL CONFORM TO APPLICABLE SUBSECTIONS OF THE STANDARD SPECIFICATIONS SECTIONS 531 AND 731.
2. BEARINGS SHALL BE PAID FOR UNDER ITEM 531.2 - BEARING DEVICE ASSEMBLY, POT.
3. THE CROSS HATCHED COMPONENTS OF THE BEARING ARE FOR REPRESENTATIVE PURPOSES ONLY. THE ACTUAL CONFIGURATION OF THE COMPONENTS WILL BE DEPENDENT UPON THE SPECIFIC BEARING, CONFORMING TO THE ITEM'S SPECIFICATION.
4. FOR ANCHOR BOLT LAYOUT AND GIRDER CHORD ANGLES, SEE PIER AND ABUTMENT MASONRY DRAWINGS.
5. FOR BEARING ORIENTATIONS, SEE BRIDGE SHEET BR304.
6. THE BEARING DEVICES SUPPLIED SHALL BE CAPABLE OF TRANSMITTING THE LOADS AND MOVEMENT SHOWN ON THESE PLANS.
7. THE DIMENSION "H" IN THE BEARING TABLE REPRESENTS THE ASSUMED TOTAL HEIGHT OF BEARING MECHANISM BETWEEN THE SOLE PLATE AND THE MASONRY PLATE USED BY THE DESIGNER TO ESTABLISH THE BRIDGE SEAT AND PIER ELEVATIONS. IF AN ALTERNATE BEARING CONFIGURATION IS USED, BRIDGE SEAT AND PIER ELEVATIONS SHALL BE ADJUSTED ACCORDINGLY, AS APPROVED BY THE ENGINEER.
8. ALL STEEL FOR THE SOLE AND BASE PLATES SHALL CONFORM TO AASHTO M 270/M270, GRADE 250.
9. ANCHOR BOLTS, NUTS, AND WASHERS SHALL CONFORM TO SUBSECTION 714.08 OF THE SPECIFICATIONS.



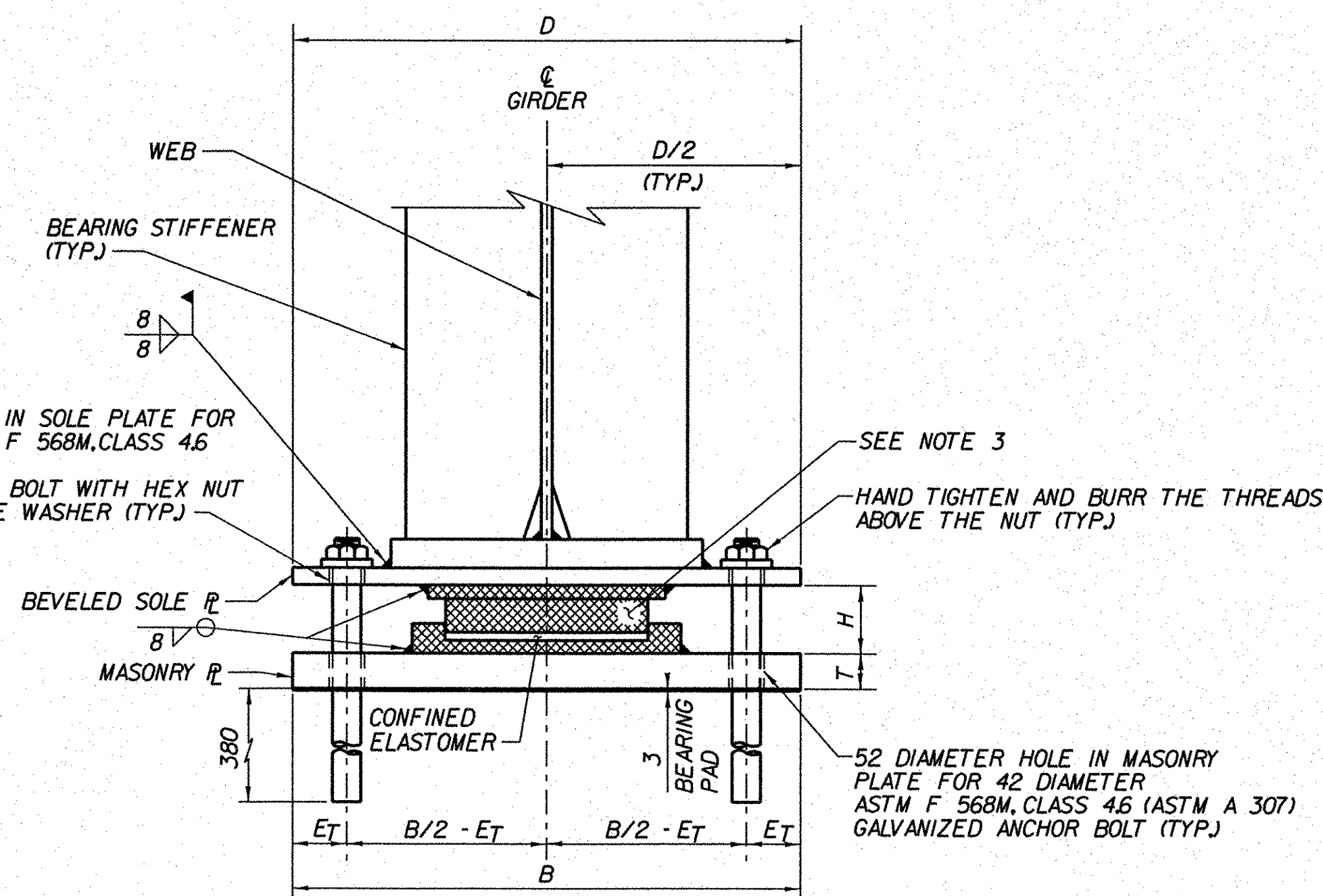
BEVELED PLATE WASHER ELEVATION
NOT TO SCALE



FIXED BEARING
NOT TO SCALE



ELEVATION A-A
NOT TO SCALE



SECTION B-B
NOT TO SCALE

SKEW TO LOCAL TANGENT

BRIDGE NO.	LOCATION	ABUTMENT 1
RAMP A	GIRDER 1	8'38"36.1"
	GIRDER 2	8'37"59.9"
	GIRDER 3	8'37"23.7"
	GIRDER 4	8'36"47.7"
RAMP D	GIRDER 1	9'19"11.0"
	GIRDER 2	9'18"10.5"
	GIRDER 3	9'17"10.3"
	GIRDER 4	9'16"10.2"

FIXED BEARING GEOMETRY																					
BRIDGE NO.	SUB-STRUCTURE NO.	LOCATION	QTY. REQUIRED	MAX. VERT. LOAD (KN)	MAX. HORIZ. LOAD (KN)	MIN. VERT. LOAD (KN)	DL+SDL (KN)	LL WITH I (KN)	ONE WAY TRANSVERSE MOVEMENT	ROTATION CAPACITY (RADIAN)	MASONRY PL				SOLE PL				BRG. ANCHOR BOLTS		
											A	B	T	C	D	T ₁	T ₂	H	DIA.	E _T	E _L
RAMP A	ABUT. 1	ALL	4	759	77	295	382	377	-	0.014	500	750	48	500	750	25	53	88	42	80	115
RAMP D	ABUT. 1	ALL	4	823	88	359	440	383	-	0.014	500	750	51	500	750	25	53	88	42	80	115

**STATE OF VERMONT
AGENCY OF TRANSPORTATION**

Town Of	BENNINGTON	Bridge No.	B15, B15N, B15S
Highway No.	VT RTE 279	Log Sta.	
		Surv. Sta.	
VT ROUTE 279 & RAMPS OVER ROARING BRANCH OF WALLOOSAC RIVER			

ABUTMENT 1 FIXED BEARING DETAILS

Designed By	A. ODEN	Drawn By	D. SHAFFER
Checked By	B.J. CARLSON	Date	06/08
		Bridge Design Supervisor	K.M. WOJTKOWSKI
		Date	06/08
PROJECT	BENNINGTON		
	PROJECT NO. AC NH 019-(K5)		
TVGA CAD Drawing No.	BEARINGS.dgn	Date	02/02/2009
Bridge Sheet No.	BR301	Sheet	288 of 367