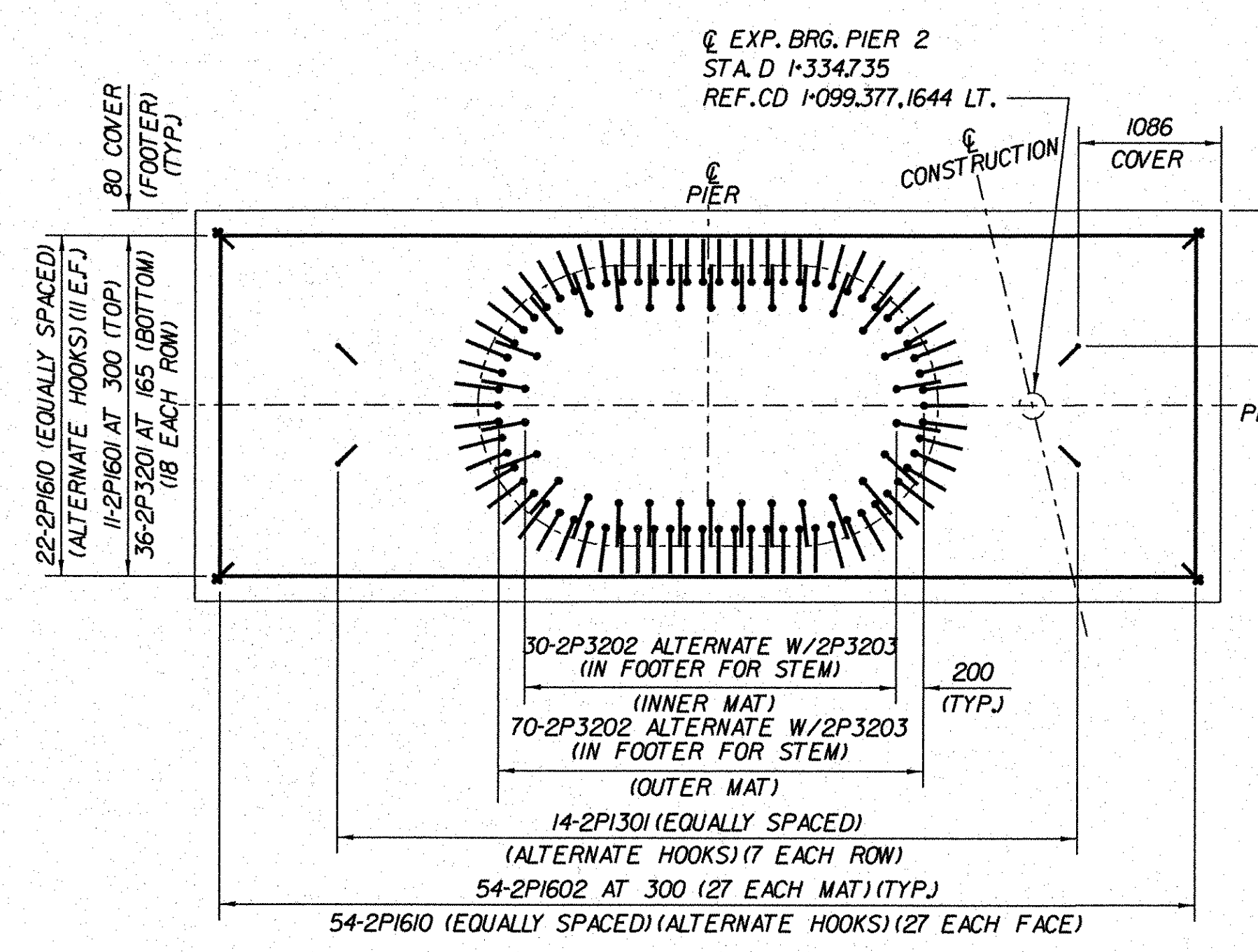
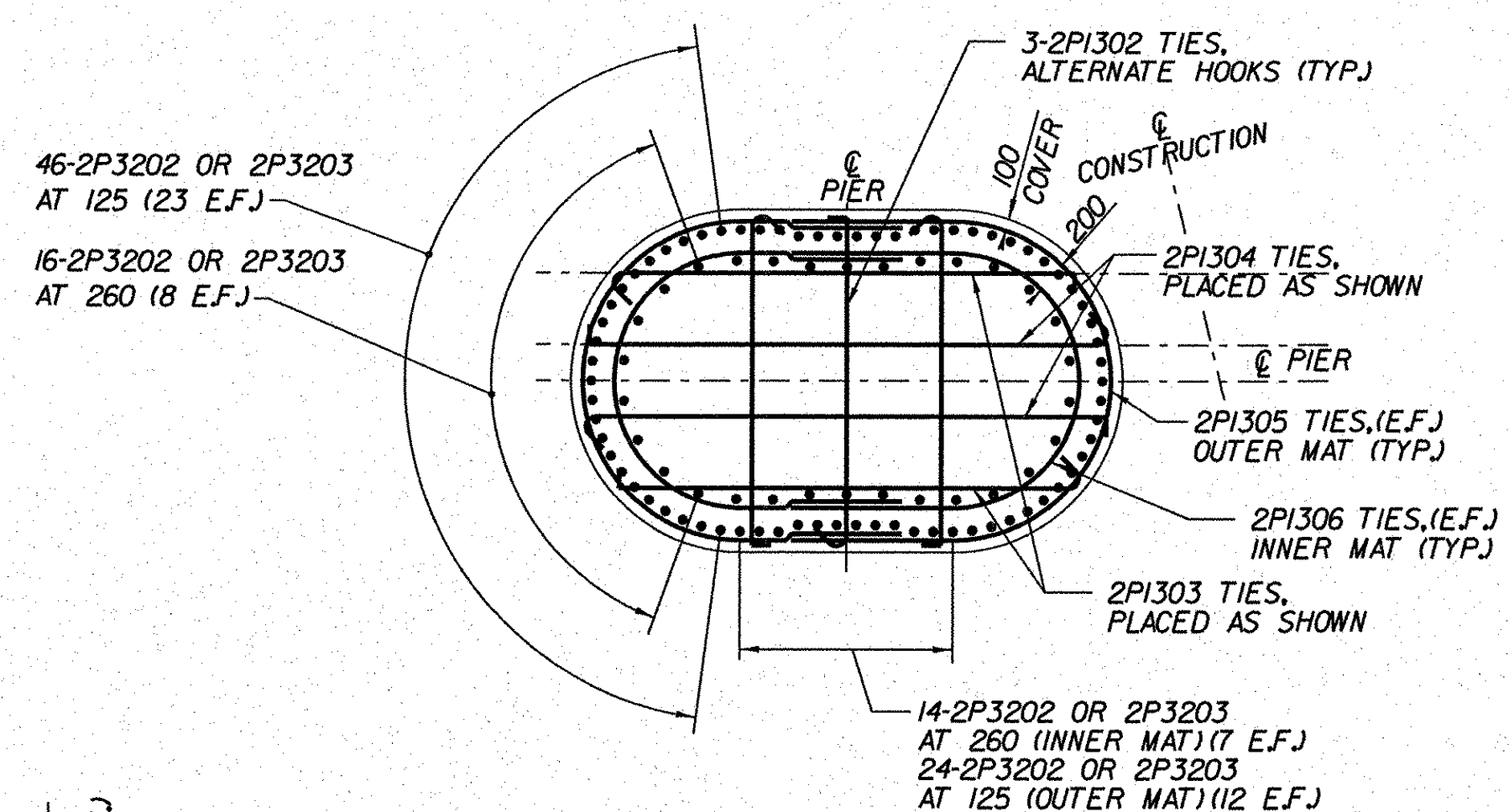


NOTES:

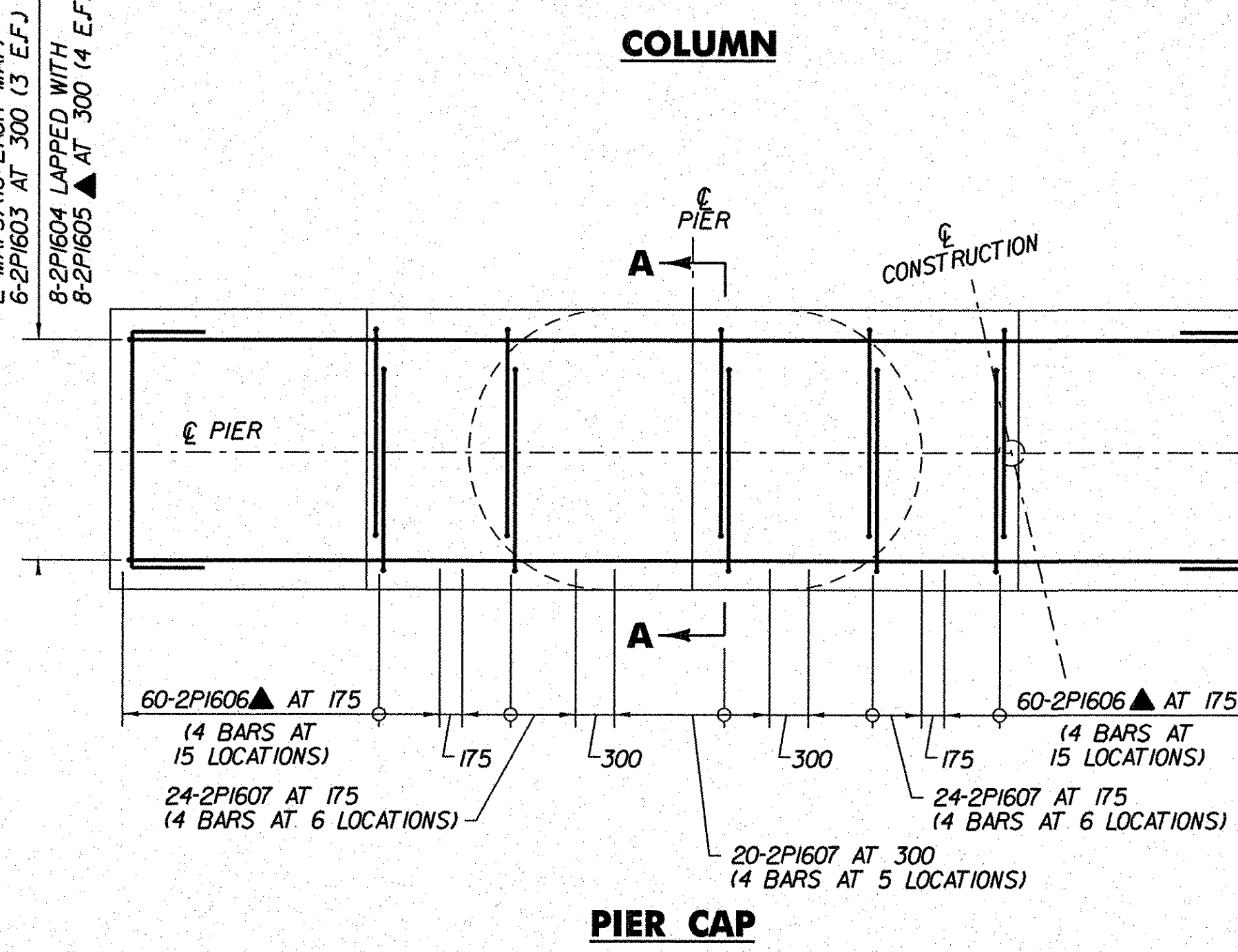
1. DRILLED SHAFT REINFORCEMENT NOT SHOWN FOR CLARITY. SEE BRIDGE SHEET BR300 FOR DETAILS.



FOOTING

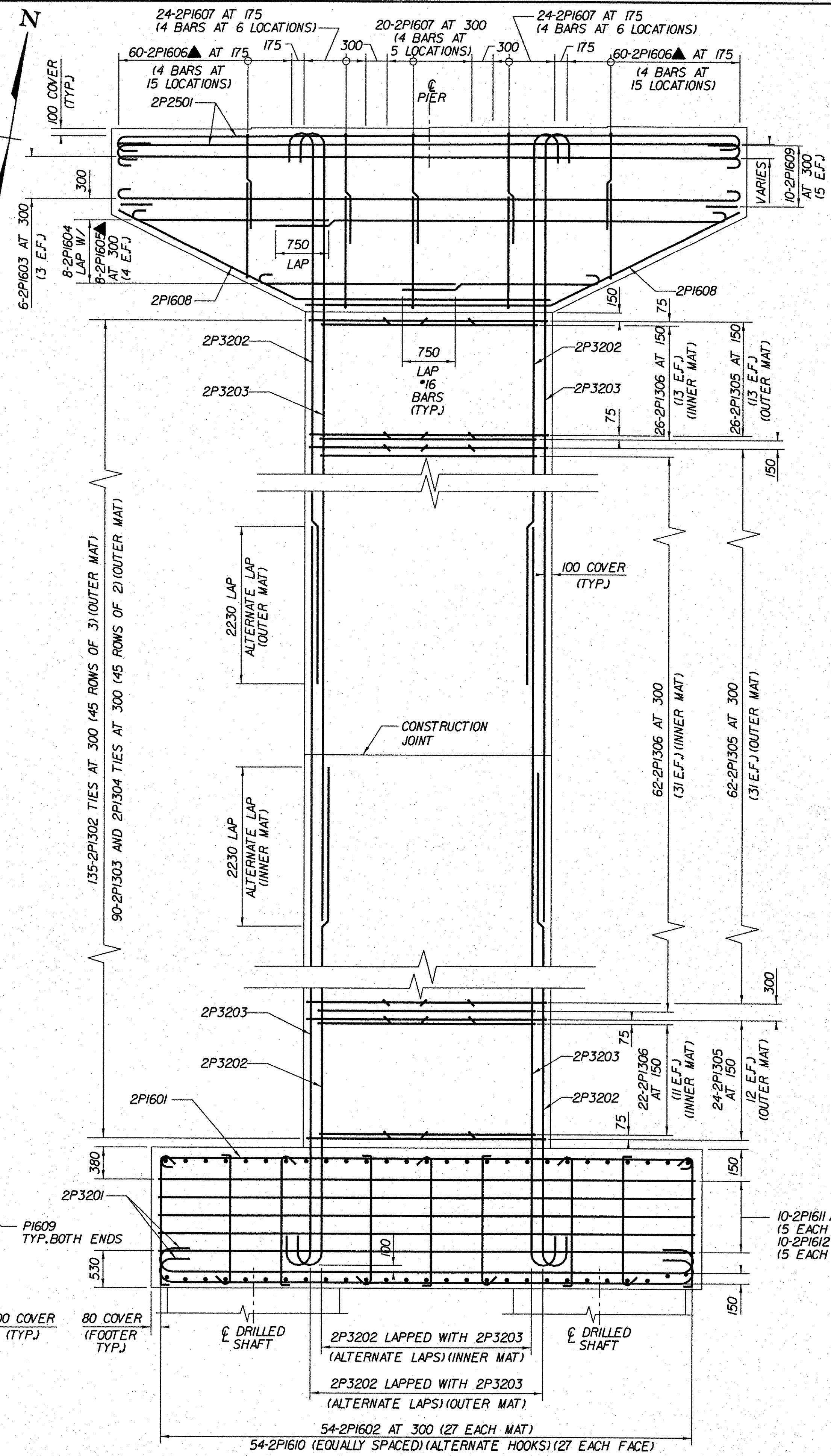


COLUMN



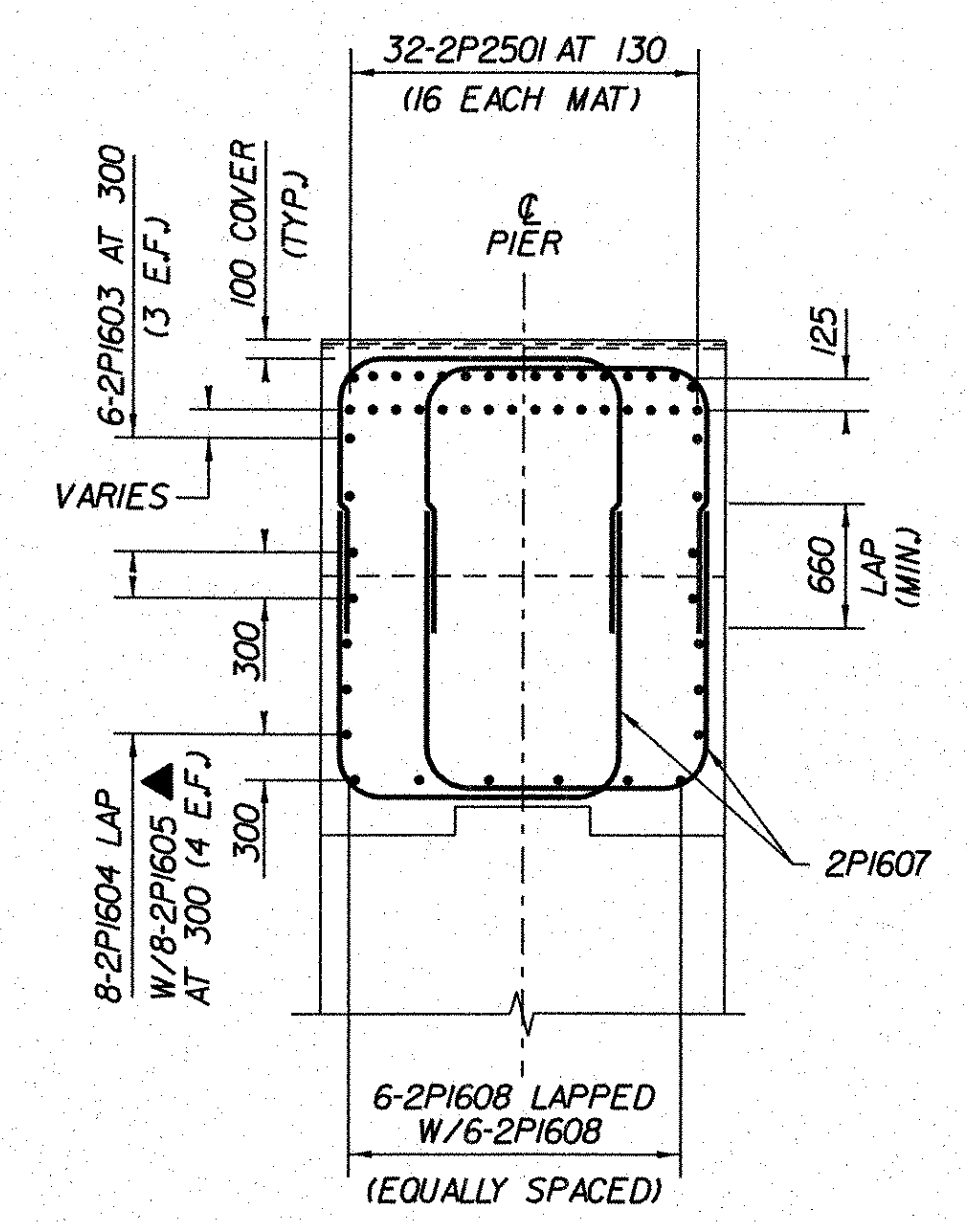
PIER CAP REINFORCEMENT PLANS

SCALE 1:40



REINFORCEMENT ELEVATION

SCALE 1:40

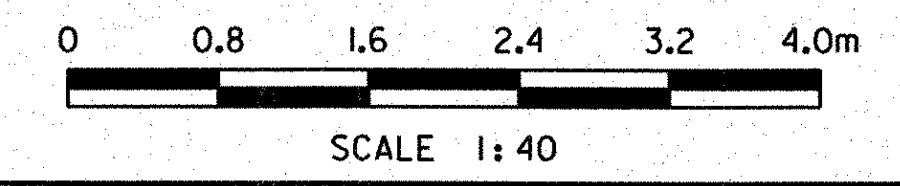


SECTION A-A

SCALE 1:40

LEGEND:

- F.F. - FRONT FACE
- B.F. - BACK FACE
- E.F. - EACH FACE
- C.B. - CORNER BAR
- C.J. - CONSTRUCTION JOINT
- ▲ - CUT TO FIT IN FIELD



STATE OF VERMONT AGENCY OF TRANSPORTATION	
Town Of BENNINGTON	Bridge No. B15N
Highway No. VT RTE 279	Log Sta. Surv. Sta.
VT ROUTE 279 & RAMPS OVER ROARING BRANCH OF WALLLOOMSAC RIVER	
PIER 2 REINFORCEMENT (RAMP D)	
Designed By B.J. CARLSON	Drawn By R.G. COCOL
Checked By K.M. WOJTKOWSKI	Date 06/08
PROJECT BENNINGTON PROJECT NO. AC NH 019-1(51)	
TVGA CAD Drawing No. RampDP2Reb.dgn Date 02/02/2009	
Bridge Sheet No. BR298	Sheet 285 of 367

